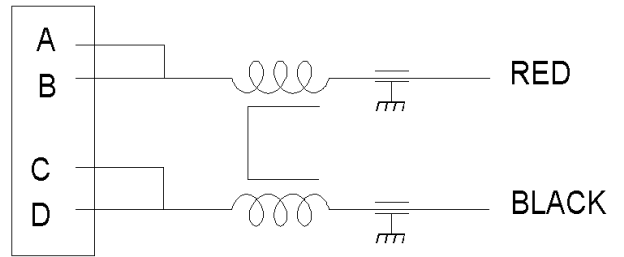




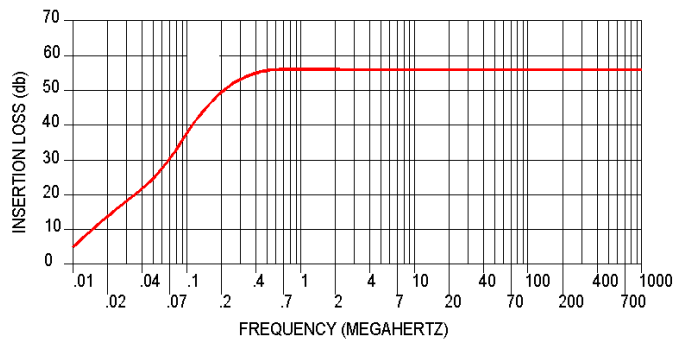
# ZF-1947-20

Operating Voltage= 400 Vdc max.  
 Operating Current Max= 20.0 amp  
 Temperature Operating= - 40 TO 60 deg. C  
 Storage Temperature= - 40 to 100 deg. C  
 Die Withstand (Line to Case)= 800 Vdc for 1 Min  
 Die Withstand (Line to Line)= 800 Vdc for 1min

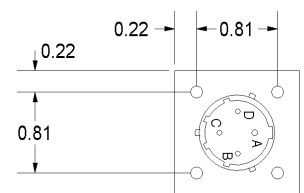
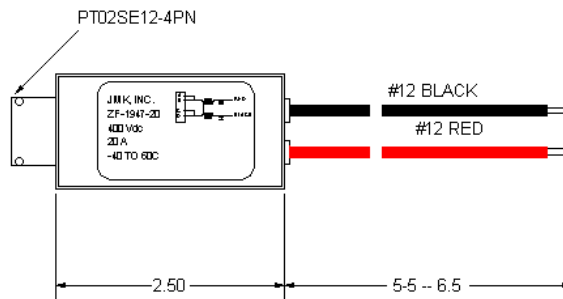
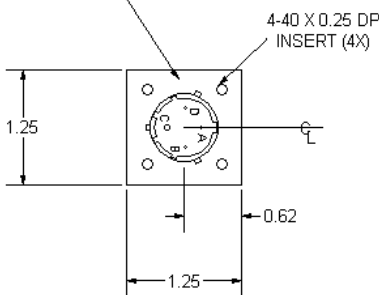


The ZF-1947-20 filter is configured to work with systems that need Common Mode insertion loss to meet the conducted emission requirements of Mil-Std-461C, D, E or F, The filter features a small size and 20 amp capability. The insertion loss is a solid 55 db to a Gigahertz and beyond.

The filter is also designed to meet the DC power requirements of:  
 Mil-Std-704F, Aircraft Electric power characteristics  
 Mil-Std-1275, 28V Elec. Systems in Military vehicles.



SEE DETAIL "A"



DETAIL "A"