

**PLEASE CHECK WWW.MOLEX.COM FOR LATEST PART INFORMATION**

**Part Number:** [0190690200](#)  
**Status:** **Active**  
**Description:** Krimptite™ Ring Tongue Terminal for 10-12 AWG Wire, Stud Size 4, Length 19.94mm (.785")

**Documents:**

[Drawing \(PDF\)](#) [RoHS Certificate of Compliance \(PDF\)](#)

**Agency Certification**

CSA LR18689  
 UL E32244

**General**

Product Family Ring and Spade Terminals  
 Series [19069](#)  
 Crimp Quality Equipment Yes  
 Mil-Spec N/A  
 Product Name Krimptite™  
 Type Ring

**Physical**

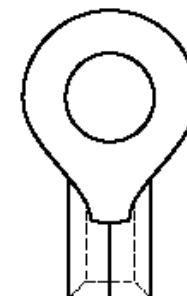
Barrel Type Closed  
 Insulation None  
 Material - Plating Mating Tin  
 Packaging Type Bag  
 Plating min: Mating (µin) 100  
 Plating min: Mating (µm) 2.5  
 Plating min: Termination (µin) 100  
 Plating min: Termination (µm) 2.5  
 Stud Size 4 (M2.6)  
 Wire Size AWG 10, 12  
 Wire Size mm² 4.00 - 6.00

**Material Info**

Old Part Number C-128-04

**Reference - Drawing Numbers**

Sales Drawing CCD10101



*Series  
 image - Reference only*

**EU RoHS**

**ELV and RoHS  
 Compliant**  
**REACH SVHC  
 Contains SVHC: No**  
**Halogen-Free  
 Status**

**China RoHS**



**Halogen-Free**

**Need more information on product  
 environmental compliance?**

Email [productcompliance@molex.com](mailto:productcompliance@molex.com)  
 For a multiple part number RoHS Certificate of Compliance, [click here](#)

Please visit the [Contact Us](#) section for any non-product compliance questions.

**Search Parts in this Series**

[19069Series](#)

**Application Tooling | [FAQ](#)**

*Tooling specifications and manuals are found by selecting the products below. Crimp Height Specifications are then contained in the Application Tooling Specification document.*

**Global**

Description	Product #
Hand Crimp Tool	<a href="#">0640030100</a>
Crimp Head for the AT-200™ Pneumatic Hand Tool	<a href="#">0640070100</a>

NOTES: 1.001

① MAT'L: COPPER (STOCK TKN  $\frac{.040}{1.02}$ )

PLATING: ELECTRO-TIN

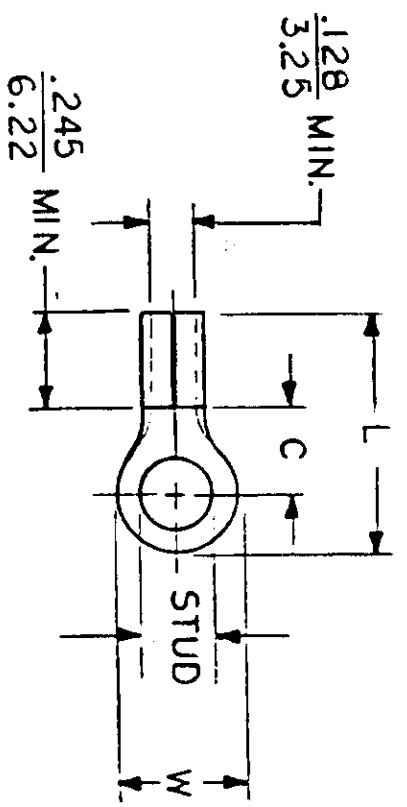
STUD SIZES: ( $\pm .005$ )

- 02 = .094 209 = .209
- 04 = .119 413 = .413
- 06 = .146
- 08 = .173
- 10 = .198
- 14 = .265
- 56 = .328
- 38 = .390

UL LISTING # E32244  
 CSA LISTING # 18689

ALL DIMENSIONS = INCHES / MM

WIRE SIZE: 12-10 AWG  
 4.0-6.0 MM<sup>2</sup>



FILE NO. C-CD-101-01

PART NUMBER	"W" ±.010	"C" MIN.	"L" MAX.	REFERENCE		TITLE:	AVAILABLE STUD SIZES
				SCALE:	NTS		
C-101-	$\frac{.750}{19.05}$	$\frac{.611}{15.52}$	$\frac{1.280}{32.51}$	SCALE:	NTS	RING TONGUE	14, 56, 38, 76, 12
C-128-	$\frac{.375}{9.53}$	$\frac{.303}{7.70}$	$\frac{.785}{19.94}$	SCALE:	NTS	TERMINAL	04, 06, 08, 10, 209
C-130-	$\frac{.530}{13.46}$	$\frac{.393}{9.98}$	$\frac{.952}{24.18}$	SCALE:	NTS	KRIMP TITE	10, 14, 56, 38, 209, 413
C-136-	$\frac{.282}{7.16}$	$\frac{.306}{7.77}$	$\frac{.741}{18.82}$	SCALE:	NTS	100-SERIES	
C-140-	$\frac{.592}{15.04}$	$\frac{.468}{11.89}$	$\frac{1.056}{26.82}$	SCALE:	NTS		
DIMENSIONAL TOLERANCES UNLESS OTHERWISE SPECIFIED				DATE	2-10-92	DRAWN BY: <i>Ed Frank</i>	
FRAC. DEC. ANG.				CHKD. BY:		APPRD. BY:	
± ± ±							



DWG. NO. A CUSTOMER DWG.