

PLEASE CHECK WWW.MOLEX.COM FOR LATEST PART INFORMATION

Part Number: [0512423000](#)
Status: **Active**
Overview: microclasp
Description: 2.00mm (.079") Pitch MicroClasp™ Wire-to-Board Receptacle Housing, Positive Lock, Dual Row, With Terminal Retainer Option, 30 circuits

Documents:

[3D Model](#) [Product Specification PS-51242-002 \(PDF\)](#)
[Drawing \(PDF\)](#) [RoHS Certificate of Compliance \(PDF\)](#)
[Product Specification PS-51242-001 \(PDF\)](#)

General

Product Family	Crimp Housings
Series	51242
Overview	microclasp
Product Name	MicroClasp™

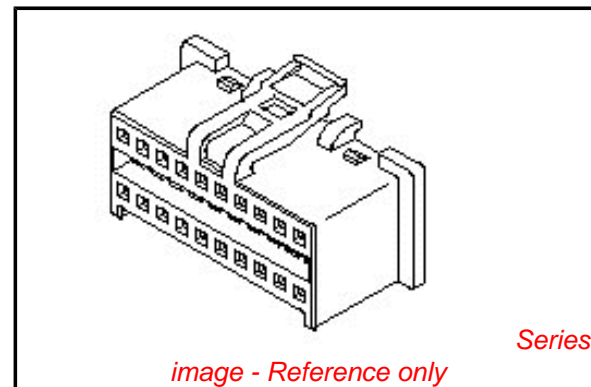
Physical

Circuits (maximum)	30
Color - Resin	Natural
Gender	Female
Glow-Wire Compliant	No
Lock to Mating Part	Yes
Material - Resin	Nylon
Number of Rows	2
Packaging Type	Bag
Panel Mount	No
Pitch - Mating Interface (in)	0.079 In
Pitch - Mating Interface (mm)	2.00 mm
Stackable	No
Temperature Range - Operating	-25°C to +85°C

Material Info

Reference - Drawing Numbers

Product Specification	PS-51242-001, PS-51242-002, RPS-51242-003, RPS-51242-004, RPS-51242-005
Sales Drawing	SD-51242-002



EU RoHS

**ELV and RoHS
Compliant**
REACH SVHC
 Not Reviewed
Halogen-Free
Status
Not Reviewed

China RoHS



**Need more information on product
environmental compliance?**

Email productcompliance@molex.com
 For a multiple part number RoHS Certificate of
 Compliance, [click here](#)

Please visit the [Contact Us](#) section for any
 non-product compliance questions.

Search Parts in this Series

[51242Series](#)

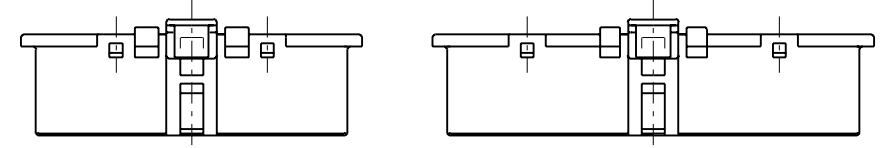
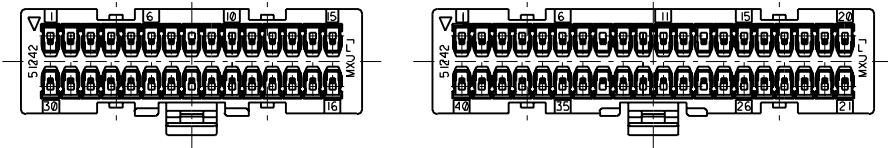
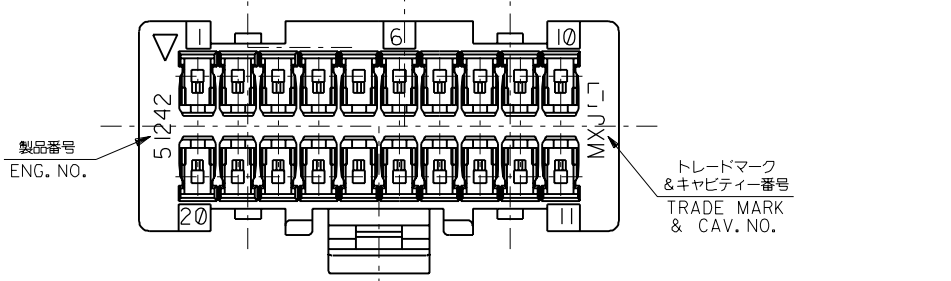
Mates With

[55763](#)

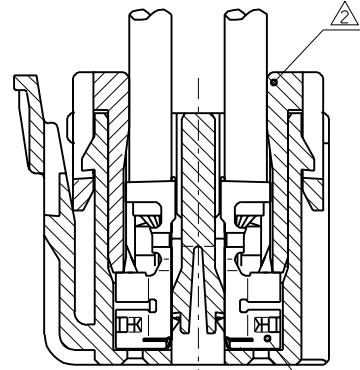
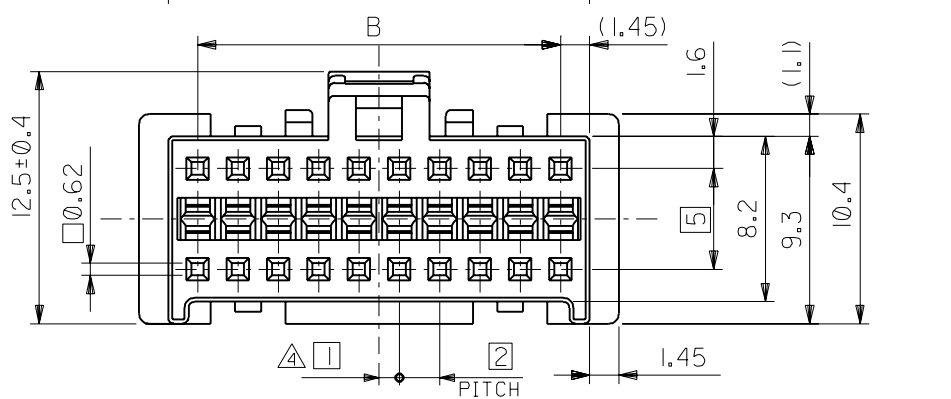
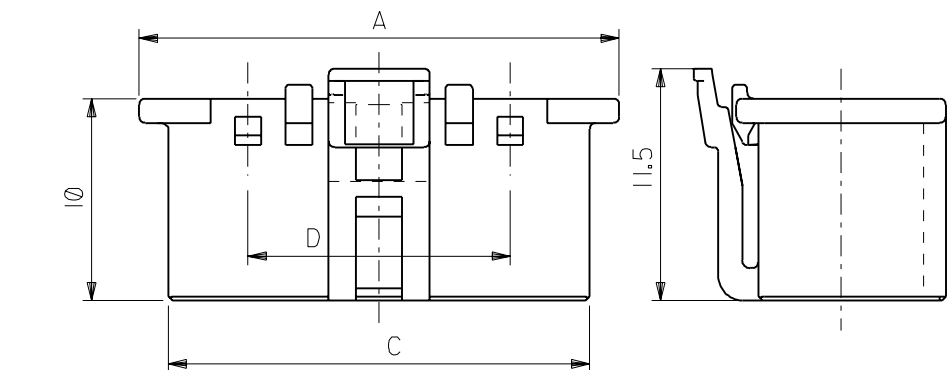
Use With

[55767](#), [56134](#)

DWG. NO. SD-51242-002



VIEW OF 30, 40 CIRCUIT (2:1)



極数	CIRCUIT	SIZE	色	COLOR	
25	40.9	38	43.8	51242-400*	40
15	30.9	28	33.8	51242-300*	30
13	20.9	18	23.8	51242-200*	20
D	C	B	A	△5 MATERIAL NO.	CKT.
				ナチュラル(白) NATURAL(WHITE)	0
				赤 RED	2

ターミナル及びリテーナー装着状態図
TERMINAL & RETAINER ASSEMBLY DRAWING
SCALE 5:1

DO NOT SCALE DRAWING

064NO. DRWN: CH'K: APPR: 063NO. DRWN: CH'K: APPR: 062NO. DRWN: CH'K: APPR: REVISED 061NO. J2002-0125 DRWN: N.ITO '01/08/02 CH'K: K.ASAKAWA APPR: T.YAMAGUCHI RELEASED 060NO. JC2001-0805 DRWN: N.ITO '01/04/02 CH'K: T.YAMAGUCHI APPR: M.FUKUSHIMA	MATERIAL 材料 ポリアミド (PA66)、ガラス入り、 GLASS FILLED 66 NYLON, UL94V-0, 色: 表参照 COLOR: SEE CHART	GENERAL TOLERANCES: (UNLESS SPECIFIED) 一般公差 10 UNDER 未満 ±0.2 10 OVER 以上 ±0.25 30 UNDER 未満 ±0.25 30 OVER 以上 ±0.3 WIRE RANGE 適用 適用範囲 // ANGLE 角度 ±3°	SCALE 4 : 1 DESIGN UNITS <input checked="" type="checkbox"/> mm <input type="checkbox"/> INCH 2ND ANGLE PROJECTION DRAWN BY & DATE N.ITO '01/04/02 CHECKED BY & DATE K.ASAKAWA '01/08/02 APPROVED BY & DATE T.YAMAGUCHI '01/08/02 CAD FILENAME 51242002.S01	MODEL NO. 51242-**0* DIMENSIONS: <input type="checkbox"/> mm <input type="checkbox"/> INCH <input checked="" type="checkbox"/> mm ONLY SHT 1 REV 0 TITLE: 2.0mm W+-B DUAL CONN RECEPTACLE HOUSING MOLEX MOLEX INCORPORATED MATERIAL NO. SEE CHART DRAWING NO. SD-51242-002 SHEET NO. 1 OF 1
---	---	--	---	---