

PLEASE CHECK WWW.MOLEX.COM FOR LATEST PART INFORMATION

Part Number: [0511140510](#)
Status: **Active**
Description: 3.50mm (.138") Pitch Wire-to-Wire Plug Housing, Positive Lock, With Optional Panel Mount, 5 Circuits

Documents:

[3D Model](#) [Product Specification PS-51067-008 \(PDF\)](#)
[Drawing \(PDF\)](#) [RoHS Certificate of Compliance \(PDF\)](#)

Agency Certification

CSA	LR19980
TUV	R72081037
UL	E29179

General

Product Family	Crimp Housings
Series	51114
Product Name	N/A

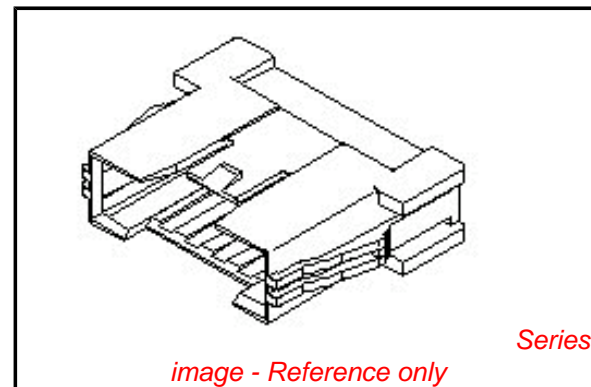
Physical

Circuits (maximum)	5
Color - Resin	Natural
Flammability	94V-0
Gender	Male
Glow-Wire Compliant	No
Material - Resin	Polyester
Number of Rows	1
Packaging Type	Bag
Panel Mount	No
Pitch - Mating Interface (in)	0.138 In
Pitch - Mating Interface (mm)	3.50 mm
Stackable	No
Temperature Range - Operating	-40°C to +105°C

Material Info

Reference - Drawing Numbers

Product Specification	PS-51067-008
Sales Drawing	SD-51114-**10



EU RoHS

ELV and RoHS Compliant
REACH SVHC Contains SVHC: No
Halogen-Free Status
Not Reviewed

China RoHS



Need more information on product environmental compliance?

Email productcompliance@molex.com
 For a multiple part number RoHS Certificate of Compliance, [click here](#)

Please visit the [Contact Us](#) section for any non-product compliance questions.

Search Parts in this Series

[51114Series](#)

Mates With

[51067](#)

Use With

[50419](#)

PLEASE CHECK WWW.MOLEX.COM FOR LATEST PART INFORMATION

DWG. NO.
SD-51114-***10

E

D

C
DIMENSIONS IN METRIC DO NOT SCALE DRAWING

B

A

8

7

6

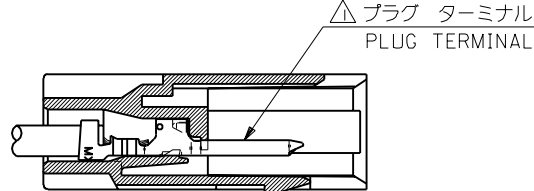
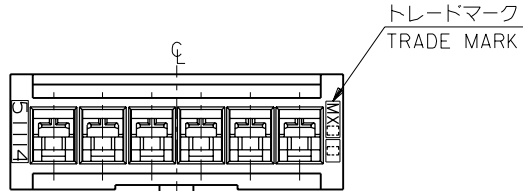
5

4

3

2

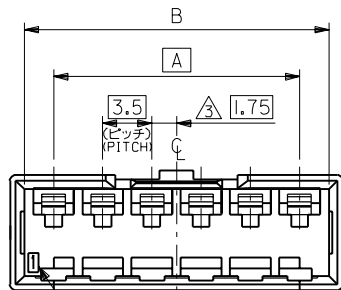
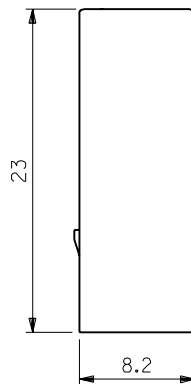
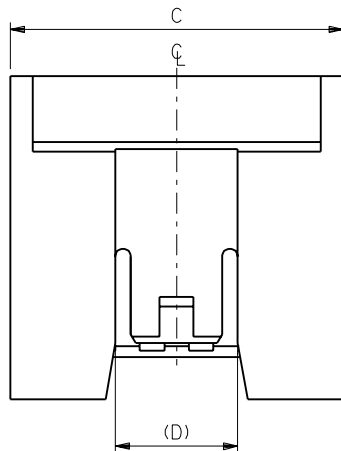
1



注記 NOTES

- △ 適合プラグ ターミナル: 50419-****
APPLICABLE PLUG TERMINAL : 50419-****
2. 嵌合相手: 51067 シリーズ
MATE WITH : 51067 SERIES
- △ 偶数極の製品に適用。
APPLY EVEN CIRCUIT PRODUCTS.

ターミナル装着状態図
TERMINAL ASSEMBLY DRAWING



回路番号
CIRCUIT NO.

8.7	37.7	35.7	31.5	51114-1010	10	
	34.2	32.2	28.0	-0910	9	
↑	30.7	28.7	24.5	-0810	8	
	27.2	25.2	21.0	-0710	7	
↓	23.7	21.7	17.5	-0610	6	
	20.2	18.2	14.0	-0510	5	
↑	8.7	16.7	14.7	-0410	4	
	6.1	13.2	11.2	-0310	3	
↓	6.1	9.7	7.7	3.5	51114-0210	2
(D)	C	B	A	ENG. NO.	CKT. 極数	

材料 MATERIAL PBT, UL94V-0			
仕上げ FINISH — # —			
適用電線範囲 WIRE RANGE — # —			
被覆外径 INS. RANGE — # —			
角度 ANGLE	±3°		
30°以上 OVER	+0.3		
10°以上 OVER 30°未満 UNDER	+0.25		
10°未満 UNDER	+0.2		
一般公差 GENERAL TOLERANCES	記号 LTR	変更内容 REVISION RECORD	DR. / CHK. 日付 DATE
	0	新規作成 (J30900)	M.F. / H.H. '93/9/7

MOLEX MOLEX-JAPAN CO.,LTD.
日本モレックス株式会社

REVISE ONLY ON CAD SYSTEM

TITLE 名称
3.5 WIRE TO WIRE CONN.
PLUG HOUSING

DWG. NO. SD-51114-***10

REV 0

THIS DRAWING CONTAINS INFORMATION THAT IS PROPRIETARY TO MOLEX(JAPAN) AND SHOULD NOT BE USED WITHOUT WRITTEN PERMISSION
本図面は日本モレックス (株) の所有する情報を含むもので 当社の許可なく複製を禁止する。