

PLEASE CHECK WWW.MOLEX.COM FOR LATEST PART INFORMATION

Part Number: [0511140410](#)
Status: **Active**
Description: 3.50mm (.138") Pitch Wire-to-Wire Plug Housing, Positive Lock, With Optional Panel Mount, 4 Circuits

Documents:

[3D Model](#) [Product Specification PS-51067-008 \(PDF\)](#)
[Drawing \(PDF\)](#) [RoHS Certificate of Compliance \(PDF\)](#)

Agency Certification

CSA	LR19980
TUV	R72081037
UL	E29179

General

Product Family	Crimp Housings
Series	51114
Product Name	N/A

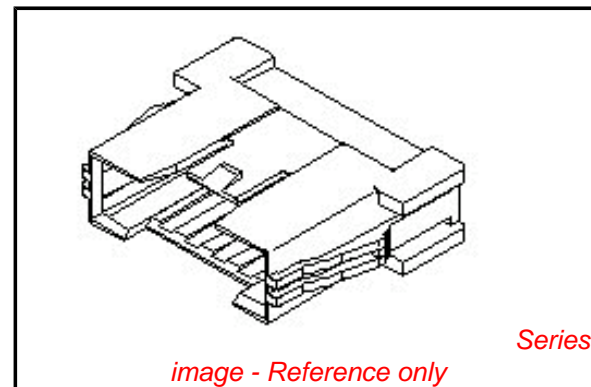
Physical

Circuits (maximum)	4
Color - Resin	Natural
Flammability	94V-0
Gender	Male
Glow-Wire Compliant	No
Material - Resin	Polyester
Number of Rows	1
Packaging Type	Bag
Panel Mount	No
Pitch - Mating Interface (in)	0.138 In
Pitch - Mating Interface (mm)	3.50 mm
Stackable	No
Temperature Range - Operating	-40°C to +105°C

Material Info

Reference - Drawing Numbers

Product Specification	PS-51067-008
Sales Drawing	SD-51114-**10



EU RoHS

ELV and RoHS Compliant
REACH SVHC Contains SVHC: No
Halogen-Free Status
Not Reviewed

China RoHS



Need more information on product environmental compliance?

Email productcompliance@molex.com
 For a multiple part number RoHS Certificate of Compliance, [click here](#)

Please visit the [Contact Us](#) section for any non-product compliance questions.

Search Parts in this Series

[51114Series](#)

Mates With

[51067](#)

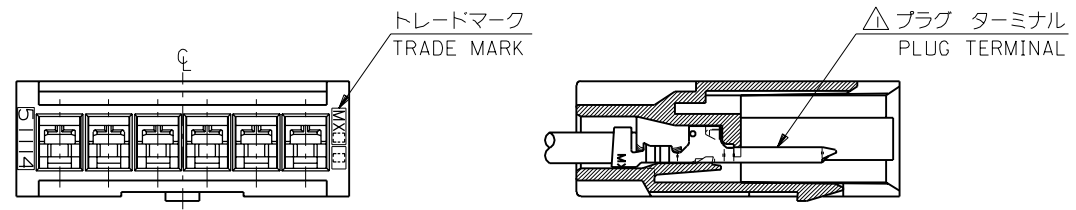
Use With

[50419](#)

PLEASE CHECK WWW.MOLEX.COM FOR LATEST PART INFORMATION

DWG. NO. SD-51114-***10

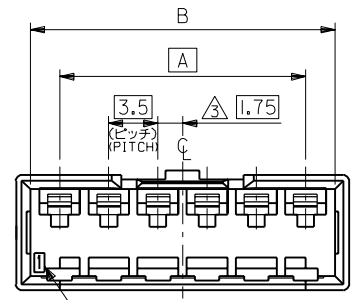
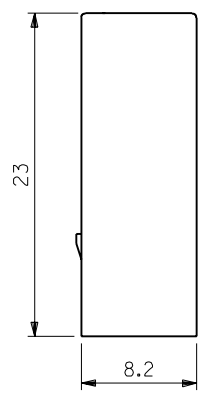
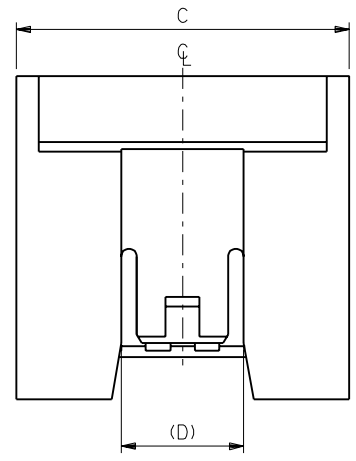
MM DIMENSIONS IN METRIC DO NOT SCALE DRAWING



ターミナル装着状態図
TERMINAL ASSEMBLY DRAWING

注記 NOTES

- △ 適合プラグ ターミナル : 50419-****
APPLICABLE PLUG TERMINAL : 50419-****
- 2. 嵌合相手 : 51067 シリーズ
MATE WITH : 51067 SERIES
- △ 偶数極の製品に適用。
APPLY EVEN CIRCUIT PRODUCTS.



回路番号
CIRCUIT NO.

8.7	37.7	35.7	31.5	51114-1010	10	
	34.2	32.2	28.0	-0910	9	
	30.7	28.7	24.5	-0810	8	
	27.2	25.2	21.0	-0710	7	
	23.7	21.7	17.5	-0610	6	
	20.2	18.2	14.0	-0510	5	
	8.7	16.7	14.7	-0410	4	
	6.1	13.2	11.2	-0310	3	
	6.1	9.7	7.7	3.5	51114-0210	2
(D)	C	B	A	ENG. NO.	CKT. 極数	

材料 MATERIAL		PBT, UL94V-0	
仕上げ FINISH		— # —	
適用電線範囲 WIRE RANGE		— # —	
被覆外径 INS. RANGE		— # —	
角度 ANGLE	±3°	記号 LTR	変更内容 REVISION RECORD
30以上 OVER	+0.3	0	新規作成 (J30900)
10以上 30未満 UNDER	+0.25		
10未満 UNDER	+0.2		
一般公差 GENERAL TOLERANCES		DR. 日付 DATE	CHK. 日付 DATE
		M.F.	H.H.
		93/9/7	93/9/7
		M.FUJIKURA	H.HIRAMOTO
		APP'D BY '93/9/7	尺度 SCALE 3 : 1
		M.FUKUSHIMA	

材料 MATERIAL		PBT, UL94V-0	
仕上げ FINISH		— # —	
適用電線範囲 WIRE RANGE		— # —	
被覆外径 INS. RANGE		— # —	
DRAWN BY '93/5/24		CHK'D BY '93/9/7	
M.FUJIKURA		H.HIRAMOTO	
APP'D BY '93/9/7		尺度 SCALE 3 : 1	
M.FUKUSHIMA			
モレックス株式会社		モレックス株式会社	
REVISE ONLY ON CAD SYSTEM			
TITLE 名称			
3.5 WIRE TO WIRE CONN. PLUG HOUSING			
DWG. NO.		REV	
SD-51114-***10		0	