

PLEASE CHECK WWW.MOLEX.COM FOR LATEST PART INFORMATION

Part Number: [0511140200](#)
Status: **Active**
Description: 3.50mm (.138") Pitch Wire-to-Wire Plug Housing, Positive Lock, With Optional Panel Mount, 2 Circuits

Documents:

[3D Model](#) [Product Specification PS-51067-008 \(PDF\)](#)
[Drawing \(PDF\)](#) [RoHS Certificate of Compliance \(PDF\)](#)

Agency Certification

CSA	LR19980
TUV	R72081037
UL	E29179

General

Product Family	Crimp Housings
Series	51114
Product Name	N/A

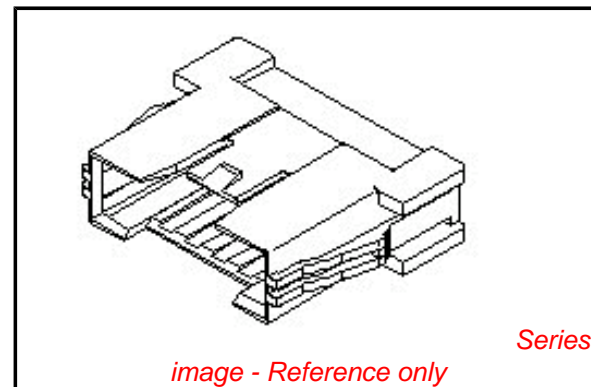
Physical

Circuits (maximum)	2
Color - Resin	Natural
Flammability	94V-0
Gender	Male
Glow-Wire Compliant	No
Material - Resin	Polyester
Number of Rows	1
Packaging Type	Bag
Panel Mount	Yes
Pitch - Mating Interface (in)	0.138 In
Pitch - Mating Interface (mm)	3.50 mm
Stackable	No
Temperature Range - Operating	-40°C to +105°C

Material Info

Reference - Drawing Numbers

Product Specification	PS-51067-008, RPS-51067-020
Sales Drawing	SD-51114-**00



EU RoHS

ELV and RoHS Compliant
REACH SVHC Contains SVHC: No
Halogen-Free Status

China RoHS



Not Halogen-Free

Need more information on product environmental compliance?

Email productcompliance@molex.com
 For a multiple part number RoHS Certificate of Compliance, [click here](#)

Please visit the [Contact Us](#) section for any non-product compliance questions.

Search Parts in this Series

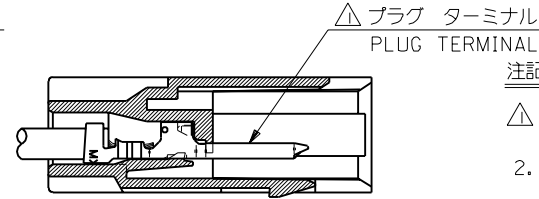
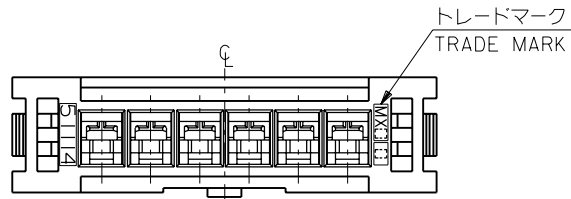
[51114Series](#)

Mates With

[51067](#)

Use With

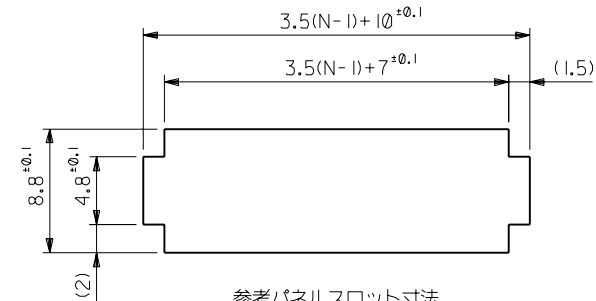
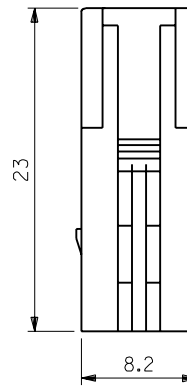
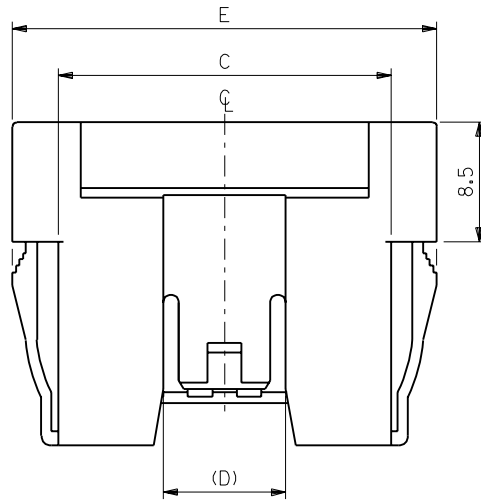
[50419](#)



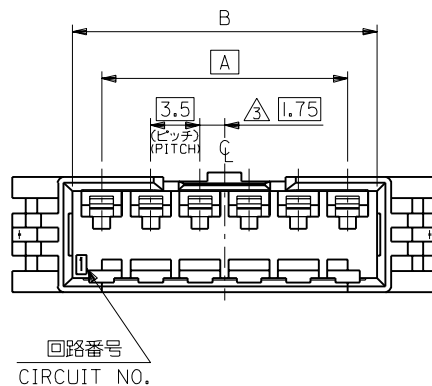
注記 NOTES

- △ 適合プラグ ターミナル : 50419-****
APPLICABLE PLUG TERMINAL : 50419-****
- 2. 嵌合相手 : 51067 シリーズ
MATE WITH : 51067 SERIES
- △ 偶数極の製品に適用。
APPLY EVEN CIRCUIT PRODUCTS.
- 4.ハウジングは、パネル打ち抜き側から挿入すること。
INSERT HOUSING FROM PUNCH SIDE OF PANEL.

ターミナル装着状態図
TERMINAL ASSEMBLY DRAWING



参考パネルスロット寸法
(パネル厚: 0.8~2.0)
PANEL SLOT DIM. (REF.)
(THICKNESS : 0.8 - 2.0)



44.2	8.7	37.7	35.7	31.5	51114-1000	10
40.7		34.2	32.2	28.0	-0900	9
37.2		30.7	28.7	24.5	-0800	8
33.7		27.2	25.2	21.0	-0700	7
30.2		23.7	21.7	17.5	-0600	6
26.7		20.2	18.2	14.0	-0500	5
23.2	8.7	16.7	14.7	10.5	-0400	4
19.7	6.1	13.2	11.2	7.0	-0300	3
16.2	6.1	9.7	7.7	3.5	51114-0200	2
E	(D)	C	B	A	ENG. NO.	CKT. 極数

材料 MATERIAL		PBT, UL94V-0	
仕上げ FINISH		— # —	
適用電線範囲 WIRE RANGE		— # —	
被覆外径 INS. RANGE		— # —	
角度 ANGLE	±3°	DR.	DATE
30以上 OVER	+0.3	M.F.	'94/4/1
10以上 30未満 UNDER	+0.25	M.F.	'93/9/7
10未満 UNDER	+0.2	M.F.	'93/9/7
一般公差 GENERAL TOLERANCES	記号 LTR	変更内容 REVISION RECORD	日付 DATE
		A 変更 (J40265)	
		0 新規作成 (J30900)	

材料 MATERIAL		PBT, UL94V-0	
仕上げ FINISH		— # —	
適用電線範囲 WIRE RANGE		— # —	
被覆外径 INS. RANGE		— # —	
材料 MOLEX-JAPAN CO.,LTD. 日本モレックス株式会社		REVISE ONLY ON CAD SYSTEM	
TITLE 名称		3.5 WIRE TO WIRE CONN. PLUG HOUSING FOR PANEL MOUNT	
DWG. NO.	REV		
SD-51114-***00	A		