

**PLEASE CHECK WWW.MOLEX.COM FOR LATEST PART INFORMATION**

**Part Number:** [0395224010](#)  
**Status:** **Active**  
**Description:** 5.00mm (.197") Pitch Eurostyle™ Horizontal PCB Header, Surface Mount Compatible, 10 Circuits

**Documents:**

[3D Model](#) [Product Specification PS-39500-001 \(PDF\)](#)  
[Drawing \(PDF\)](#) [RoHS Certificate of Compliance \(PDF\)](#)

**General**

|                             |                           |
|-----------------------------|---------------------------|
| Product Family              | Terminal Blocks           |
| Series                      | <a href="#">39522</a>     |
| Application                 | Wire-to-Board             |
| Component Type              | PCB Header                |
| Product Literature Order No | USA-355                   |
| Product Name                | ESE, Eurostyle™ Pluggable |
| Type                        | Euro Block                |

**Physical**

|                                |                 |
|--------------------------------|-----------------|
| Circuits (Loaded)              | 10              |
| Entry Angle                    | N/A             |
| Lock to Mating Part            | Yes             |
| Number of Rows                 | 1               |
| Orientation                    | Horizontal      |
| PC Tail Length (in)            | 0.154 In        |
| PC Tail Length (mm)            | 3.90 mm         |
| PCB Thickness Recommended (in) | 0.125 In        |
| PCB Thickness Recommended (mm) | 3.20 mm         |
| Panel Mount                    | No              |
| Pitch - Mating Interface (in)  | 0.197 In        |
| Pitch - Mating Interface (mm)  | 5.00 mm         |
| Polarized to Mating Part       | Yes             |
| Shrouded                       | Closed Ends     |
| Stackable                      | No              |
| Surface Mount Compatible (SMC) | Yes             |
| Temperature Range - Operating  | -40°C to +140°C |
| Wire Size AWG                  | N/A             |

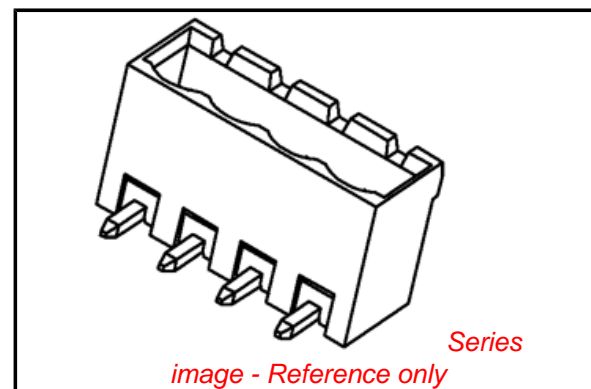
**Electrical**

|                               |      |
|-------------------------------|------|
| Current - Maximum per Contact | 15A  |
| Voltage - Maximum             | 300V |

**Material Info**

**Reference - Drawing Numbers**

|                       |                            |
|-----------------------|----------------------------|
| Product Specification | PS-39500-001               |
| Sales Drawing         | SD-39501-002, SD-39522-001 |



**EU RoHS**

**ELV and RoHS  
Compliant**  
**REACH SVHC**  
 Not Reviewed  
**Halogen-Free  
Status**

**China RoHS**



**Not Reviewed**

**Need more information on product  
environmental compliance?**

Email [productcompliance@molex.com](mailto:productcompliance@molex.com)  
 For a multiple part number RoHS Certificate of Compliance, [click here](#)

Please visit the [Contact Us](#) section for any non-product compliance questions.

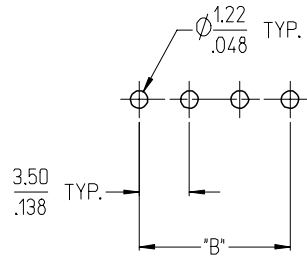
**Search Parts in this Series**

[39522Series](#)

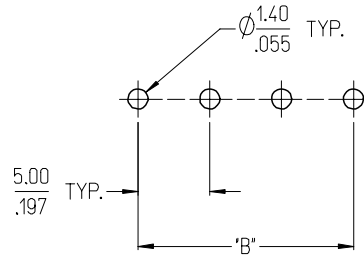
**Mates With**

[39520](#) Horizontal Plug, [39523](#) Vertical Plug, Most 5.00mm (.197") Pitch Industry Standard Plugs

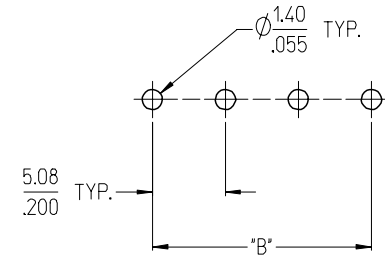
3950X SERIES  
3.50mm HEADERS



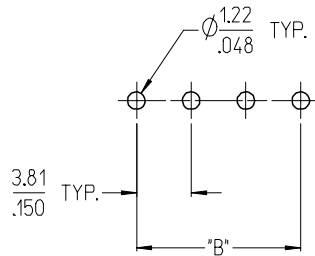
3952X & 3954X SERIES  
5.00mm HEADERS  
5.00mm 10 AMP FIXED



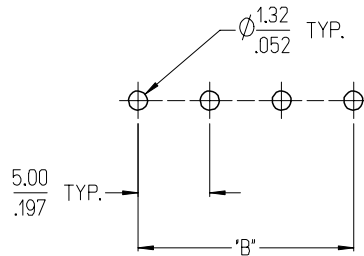
3953X SERIES  
5.08mm HEADERS



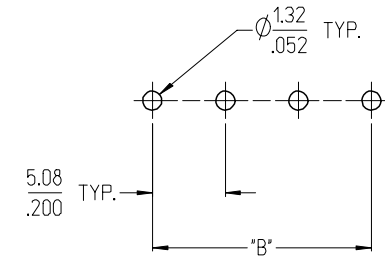
3951X SERIES  
3.81mm HEADERS



3954X SERIES  
5.00mm 15 AMP FIXED



3954X SERIES  
5.08mm 15 AMP FIXED



NOTES:

- REFER TO INDIVIDUAL PRODUCT SALES DRAWINGS FOR "B" DIMENSION.
- DOES NOT APPLY TO DUAL LEVEL HEADERS, SERIES 39528 AND 39538.
- TYP. = TYPICAL.

INITIAL RELEASE  
EC NO: ETC2007-0096  
DRW: CLYORK 2006/10/02  
CHKD: JMACNEIL 2006/10/04  
APPR: JMACNEIL 2006/10/04

QUALITY SYMBOLS  
 =0  
 =0

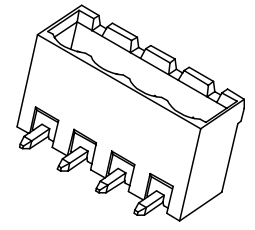
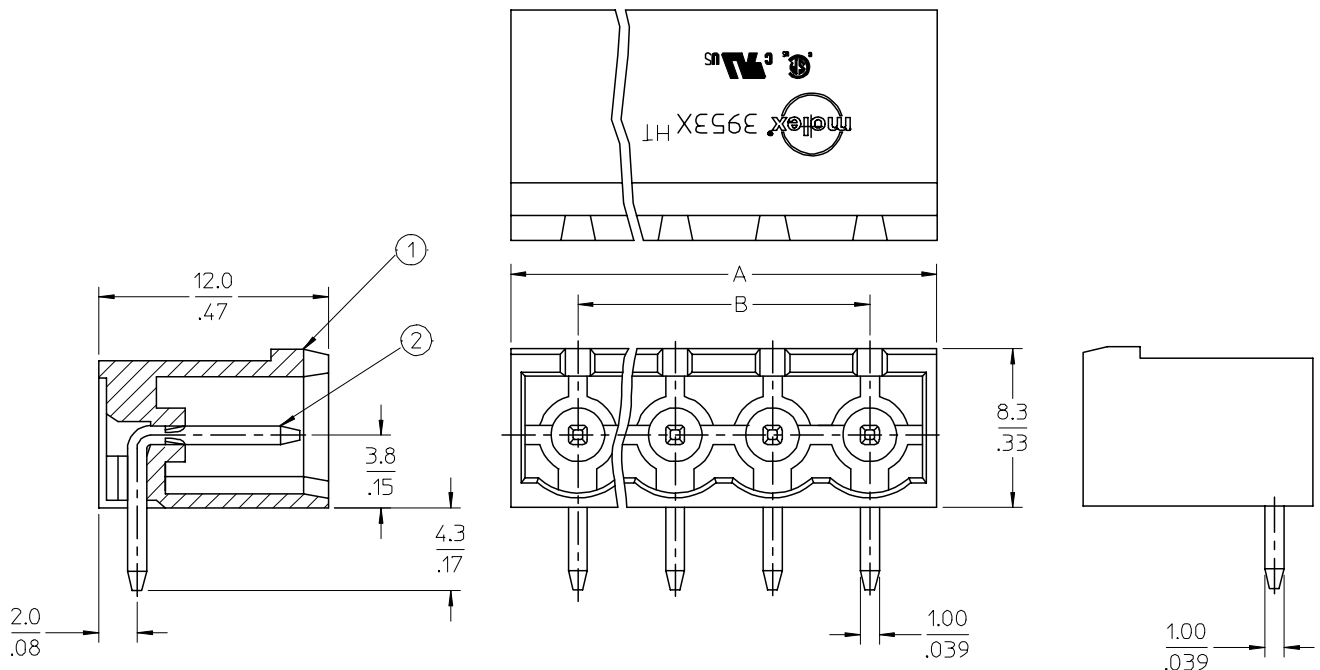
GENERAL TOLERANCES (UNLESS SPECIFIED)

|               | mm     | INCH    |
|---------------|--------|---------|
| 4 PLACES      | ± .005 | ± .0005 |
| 3 PLACES      | ± .010 | ± .0010 |
| 2 PLACES      | ± 0.13 | ± .01   |
| 1 PLACE       | ± 0.3  | ± .0125 |
| ANGULAR ± 2 ° |        |         |

DRAFT WHERE APPLICABLE  
MUST REMAIN WITHIN DIMENSIONS

| DIMENSION STYLE |            |
|-----------------|------------|
| MM/IN           | DATE       |
| DRAWN BY        | C. YORK    |
| CHECKED BY      | J. MACNEIL |
| APPROVED BY     | J. MACNEIL |
| MATERIAL NO.    | --         |

| SCALE  | DESIGN UNITS        | THIRD ANGLE PROJECTION |
|--|---------------------|------------------------|
| 3:1  | INCH                |                        |
| TITLE<br>RECOMMENDED PCB LAYOUT FOR ESE TERMINAL BLOCKS  |                     |                        |
| MOLEX INCORPORATED   |                     |                        |
| DOCUMENT NO.<br>SD-39501-002   | SHEET NO.<br>1 OF 1 |                        |
| SIZE B THIS DRAWING CONTAINS INFORMATION THAT IS PROPRIETARY TO MOLEX INCORPORATED AND SHOULD NOT BE USED WITHOUT WRITTEN PERMISSION |                     |                        |



**SPECIFICATIONS:**

1. Material:
  - (1). Body: PA46
  - (2). Pin: Brass
2. Wire range: N/A
3. Electrical rating: 300V, 15A.
4. Wire strip length: N/A
5. Operating temperature: -40C to +140C.
6. Max torque: N/A
7. Insulation resistance: DC 500V, 500M.
8. Dielectric withstand: AC 2500V for 1 minute.
9. Breakdown voltage: 4000V.
10.  $A = (N \times P) + 2.0\text{mm}$
11.  $B = (N - 1) \times P$
12. P (PITCH) = 5.0mm (.197").
13. N = Number of positions available 2 through 24.

|   |                               |                                       |                       |   |   |                      |                        |  |
|---|-------------------------------|---------------------------------------|-----------------------|---|---|----------------------|------------------------|--|
| ENTER DESCRIPTION<br>EC NO: NEO2006-0310<br>DRWNL: LROTHAUS 2006/01/09<br>CHKD: CYORK 2006/01/09<br>APPR: JPAMLICK 2006/01/10 | QUALITY SYMBOLS<br>= 0<br>= 0 | GENERAL TOLERANCES (UNLESS SPECIFIED) |                       | DIMENSION STYLE<br>MM/IN  | SCALE<br>4:1  | DESIGN UNITS<br>INCH | THIRD ANGLE PROJECTION |  |
|   |                               | 4 PLACES ± --- ±.0015                 | DRAWN BY<br>LROTHAUS  | DATE<br>12/6/05   | TITLE<br>5.0MM, EURO HEADER,<br>RIGHT ANGLE,<br>HI-TEMP |                      |                        |  |
|   |                               | 3 PLACES ±0.038 ±.005                 | CHECKED BY<br>C. YORK | DATE<br>01/06/06  |   |                      |                        |  |
|   |                               | 2 PLACES ±0.13 ±.01                   | APPROVED BY           | DATE  | MOLEX INCORPORATED                                      |                      |                        |  |
| 1 PLACE ±0.3 ± ---  | ANGULAR ± 2 °                 |                                       |                       |   |   |                      |                        |  |
| DRAFT WHERE APPLICABLE<br>MUST REMAIN<br>WITHIN DIMENSIONS  |                               |                                       |                       | MATERIAL NO.<br>SEE CHART   | DOCUMENT NO.<br>SD-39522-001                            | SHEET NO.<br>1 OF 1  |                        |  |
| SIZE B  |                               |                                       |                       | THIS DRAWING CONTAINS INFORMATION THAT IS PROPRIETARY TO MOLEX INCORPORATED AND SHOULD NOT BE USED WITHOUT WRITTEN PERMISSION |   |                      |                        |  |

10 9 8 7 6 5 4 3 2 1

| Description                                | Circuit Size | Material Numbers |           |           |                  |           |           |                  |           |           |                  |           |           | Dimensional Information |       |        |       |      |
|--|--------------|------------------|-----------|-----------|------------------|-----------|-----------|------------------|-----------|-----------|------------------|-----------|-----------|-------------------------|-------|--------|-------|------|
|  |              | Black            |           |           |                  |           |           | Green            |           |           |                  |           |           |                         |       |        |       |      |
|  |              | 100% Tin         |           |           | 30 u" Gold       |           |           | 100% Tin         |           |           | 30 u" Gold       |           |           | Dim. A                  |       | Dim B  |       |      |
|  |              | Printing Options |           |           | Printing Options |           |           | Printing Options |           |           | Printing Options |           |           |                         |       |        |       |      |
| None                                       | 10A          | 11A              | None      | 10A       | 11A              | None      | 10A       | 11A              | None      | 10A       | 11A              | None      | 10A       | 11A                     | mm    | inch   | mm    | inch |
| 5.0mm, Euro Header, Right Angle, High Temp | 2            | 395224002        | 395224102 | 395224202 | 395224502        | 395224602 | 395224702 | 395229002        | 395229102 | 395229202 | 395229602        | 395229602 | 395229702 | 12.00                   | 0.472 | 5.00   | 0.197 |      |
| 5.0mm, Euro Header, Right Angle, High Temp | 3            | 395224003        | 395224103 | 395224203 | 395224503        | 395224603 | 395224703 | 395229003        | 395229103 | 395229203 | 395229603        | 395229603 | 395229703 | 17.00                   | 0.669 | 10.00  | 0.394 |      |
| 5.0mm, Euro Header, Right Angle, High Temp | 4            | 395224004        | 395224104 | 395224204 | 395224504        | 395224604 | 395224704 | 395229004        | 395229104 | 395229204 | 395229604        | 395229604 | 395229704 | 22.00                   | 0.866 | 15.00  | 0.591 |      |
| 5.0mm, Euro Header, Right Angle, High Temp | 5            | 395224005        | 395224105 | 395224205 | 395224505        | 395224605 | 395224705 | 395229005        | 395229105 | 395229205 | 395229605        | 395229605 | 395229705 | 27.00                   | 1.063 | 20.00  | 0.787 |      |
| 5.0mm, Euro Header, Right Angle, High Temp | 6            | 395224006        | 395224106 | 395224206 | 395224506        | 395224606 | 395224706 | 395229006        | 395229106 | 395229206 | 395229606        | 395229606 | 395229706 | 32.00                   | 1.260 | 25.00  | 0.984 |      |
| 5.0mm, Euro Header, Right Angle, High Temp | 7            | 395224007        | 395224107 | 395224207 | 395224507        | 395224607 | 395224707 | 395229007        | 395229107 | 395229207 | 395229607        | 395229607 | 395229707 | 37.00                   | 1.457 | 30.00  | 1.181 |      |
| 5.0mm, Euro Header, Right Angle, High Temp | 8            | 395224008        | 395224108 | 395224208 | 395224508        | 395224608 | 395224708 | 395229008        | 395229108 | 395229208 | 395229608        | 395229608 | 395229708 | 42.00                   | 1.654 | 35.00  | 1.378 |      |
| 5.0mm, Euro Header, Right Angle, High Temp | 9            | 395224009        | 395224109 | 395224209 | 395224509        | 395224609 | 395224709 | 395229009        | 395229109 | 395229209 | 395229609        | 395229609 | 395229709 | 47.00                   | 1.850 | 40.00  | 1.575 |      |
| 5.0mm, Euro Header, Right Angle, High Temp | 10           | 395224010        | 395224110 | 395224210 | 395224510        | 395224610 | 395224710 | 395229010        | 395229110 | 395229210 | 395229610        | 395229610 | 395229710 | 52.00                   | 2.047 | 45.00  | 1.772 |      |
| 5.0mm, Euro Header, Right Angle, High Temp | 11           | 395224011        | 395224111 | 395224211 | 395224511        | 395224611 | 395224711 | 395229011        | 395229111 | 395229211 | 395229611        | 395229611 | 395229711 | 57.00                   | 2.244 | 50.00  | 1.969 |      |
| 5.0mm, Euro Header, Right Angle, High Temp | 12           | 395224012        | 395224112 | 395224212 | 395224512        | 395224612 | 395224712 | 395229012        | 395229112 | 395229212 | 395229612        | 395229612 | 395229712 | 62.00                   | 2.441 | 55.00  | 2.165 |      |
| 5.0mm, Euro Header, Right Angle, High Temp | 13           | 395224013        | 395224113 | 395224213 | 395224513        | 395224613 | 395224713 | 395229013        | 395229113 | 395229213 | 395229613        | 395229613 | 395229713 | 67.00                   | 2.638 | 60.00  | 2.362 |      |
| 5.0mm, Euro Header, Right Angle, High Temp | 14           | 395224014        | 395224114 | 395224214 | 395224514        | 395224614 | 395224714 | 395229014        | 395229114 | 395229214 | 395229614        | 395229614 | 395229714 | 72.00                   | 2.835 | 65.00  | 2.559 |      |
| 5.0mm, Euro Header, Right Angle, High Temp | 15           | 395224015        | 395224115 | 395224215 | 395224515        | 395224615 | 395224715 | 395229015        | 395229115 | 395229215 | 395229615        | 395229615 | 395229715 | 77.00                   | 3.031 | 70.00  | 2.756 |      |
| 5.0mm, Euro Header, Right Angle, High Temp | 16           | 395224016        | 395224116 | 395224216 | 395224516        | 395224616 | 395224716 | 395229016        | 395229116 | 395229216 | 395229616        | 395229616 | 395229716 | 82.00                   | 3.228 | 75.00  | 2.953 |      |
| 5.0mm, Euro Header, Right Angle, High Temp | 17           | 395224017        | 395224117 | 395224217 | 395224517        | 395224617 | 395224717 | 395229017        | 395229117 | 395229217 | 395229617        | 395229617 | 395229717 | 87.00                   | 3.425 | 80.00  | 3.150 |      |
| 5.0mm, Euro Header, Right Angle, High Temp | 18           | 395224018        | 395224118 | 395224218 | 395224518        | 395224618 | 395224718 | 395229018        | 395229118 | 395229218 | 395229618        | 395229618 | 395229718 | 92.00                   | 3.622 | 85.00  | 3.346 |      |
| 5.0mm, Euro Header, Right Angle, High Temp | 19           | 395224019        | 395224119 | 395224219 | 395224519        | 395224619 | 395224719 | 395229019        | 395229119 | 395229219 | 395229619        | 395229619 | 395229719 | 97.00                   | 3.819 | 90.00  | 3.543 |      |
| 5.0mm, Euro Header, Right Angle, High Temp | 20           | 395224020        | 395224120 | 395224220 | 395224520        | 395224620 | 395224720 | 395229020        | 395229120 | 395229220 | 395229620        | 395229620 | 395229720 | 102.00                  | 4.016 | 95.00  | 3.740 |      |
| 5.0mm, Euro Header, Right Angle, High Temp | 21           | 395224021        | 395224121 | 395224221 | 395224521        | 395224621 | 395224721 | 395229021        | 395229121 | 395229221 | 395229621        | 395229621 | 395229721 | 107.00                  | 4.213 | 100.00 | 3.937 |      |
| 5.0mm, Euro Header, Right Angle, High Temp | 22           | 395224022        | 395224122 | 395224222 | 395224522        | 395224622 | 395224722 | 395229022        | 395229122 | 395229222 | 395229622        | 395229622 | 395229722 | 112.00                  | 4.409 | 105.00 | 4.134 |      |
| 5.0mm, Euro Header, Right Angle, High Temp | 23           | 395224023        | 395224123 | 395224223 | 395224523        | 395224623 | 395224723 | 395229023        | 395229123 | 395229223 | 395229623        | 395229623 | 395229723 | 117.00                  | 4.606 | 110.00 | 4.331 |      |
| 5.0mm, Euro Header, Right Angle, High Temp | 24           | 395224024        | 395224124 | 395224224 | 395224524        | 395224624 | 395224724 | 395229024        | 395229124 | 395229224 | 395229624        | 395229624 | 395229724 | 122.00                  | 4.803 | 115.00 | 4.528 |      |

| SEE SHEET 1<br>EC NO: NEC2006-0310<br>DRWNL: LROTHAUS 2006/01/09<br>CHKDC: CYORK 2006/01/09<br>APPR: J.P.A.M.L.C.K 2006/01/10 | QUALITY SYMBOLS<br>▽=0<br>▽=0 | GENERAL TOLERANCES (UNLESS SPECIFIED)<br><table border="1"> <tr><th></th><th>mm</th><th>INCH</th></tr> <tr><td>4 PLACES</td><td>± ---</td><td>± .0015</td></tr> <tr><td>3 PLACES</td><td>± 0.038</td><td>± .005</td></tr> <tr><td>2 PLACES</td><td>± 0.13</td><td>± .01</td></tr> <tr><td>1 PLACE</td><td>± 0.3</td><td>± ---</td></tr> </table> |                    | mm | INCH | 4 PLACES | ± --- | ± .0015 | 3 PLACES | ± 0.038 | ± .005 | 2 PLACES | ± 0.13 | ± .01 | 1 PLACE | ± 0.3 | ± --- | DIMENSION STYLE<br>MM/IN<br>DRAWN BY: LROTHAUS DATE: 12/6/05<br>CHECKED BY: C. YORK DATE: 01/06/06<br>APPROVED BY: DATE: | SCALE<br>4:1<br>DESIGN UNITS<br>INCH<br>THIRD ANGLE PROJECTION | TITLE<br>5.0MM, EURO HEADER, RIGHT ANGLE, HI-TEMP |
|---|-------------------------------|--|--------------------|----|------|----------|-------|---------|----------|---------|--------|----------|--------|-------|---------|-------|-------|--|--|---|
|   |                               | mm   | INCH               |    |      |          |       |         |          |         |        |          |        |       |         |       |       |  |  |   |
|   | 4 PLACES                      | ± ---  | ± .0015            |    |      |          |       |         |          |         |        |          |        |       |         |       |       |  |  |   |
|   | 3 PLACES                      | ± 0.038  | ± .005             |    |      |          |       |         |          |         |        |          |        |       |         |       |       |  |  |   |
| 2 PLACES  | ± 0.13                        | ± .01  |                    |    |      |          |       |         |          |         |        |          |        |       |         |       |       |  |  |   |
| 1 PLACE   | ± 0.3                         | ± ---  |                    |    |      |          |       |         |          |         |        |          |        |       |         |       |       |  |  |   |
| MATERIAL NO.<br>SEE CHART   | DOCUMENT NO.<br>SD-39522-001  | SHEET NO.<br>2 OF 2  | MOLEX INCORPORATED |    |      |          |       |         |          |         |        |          |        |       |         |       |       |  |  |   |
| DRAFT WHERE APPLICABLE MUST REMAIN WITHIN DIMENSIONS  | SIZE B                        | THIS DRAWING CONTAINS INFORMATION THAT IS PROPRIETARY TO MOLEX INCORPORATED AND SHOULD NOT BE USED WITHOUT WRITTEN PERMISSION  |                    |    |      |          |       |         |          |         |        |          |        |       |         |       |       |  |  |   |
| REV A   | DESCRIPTION                   |  |                    |    |      |          |       |         |          |         |        |          |        |       |         |       |       |  |  |   |

9 8 7 6 5 4 3 2 1