

**PLEASE CHECK WWW.MOLEX.COM FOR LATEST PART INFORMATION**

**Part Number:** [0551254131](#)  
**Status:** **Active**  
**Overview:** [minihmc](#)  
**Description:** HMC™ Rectangular Industrial Male Terminal 55125, 12 AWG, White Retainer

**Documents:**

[3D Model](#) [Product Specification PS-54478-001 \(PDF\)](#)  
[Drawing \(PDF\)](#) [RoHS Certificate of Compliance \(PDF\)](#)

**General**

|                         |                         |
|-------------------------|-------------------------|
| Product Family          | Crimp Terminals         |
| Series                  | <a href="#">55125</a>   |
| Crimp Quality Equipment | Yes                     |
| Overview                | <a href="#">minihmc</a> |
| Product Name            | HMC™                    |

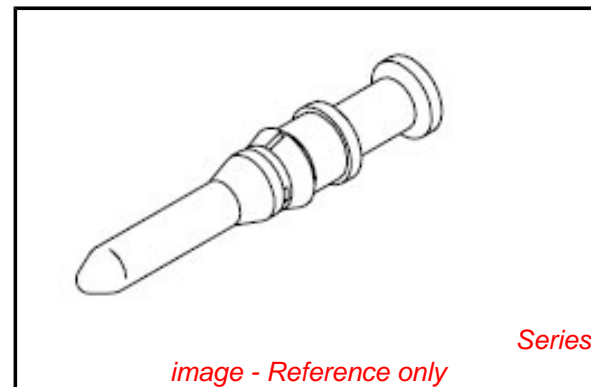
**Physical**

|                           |                     |
|---------------------------|---------------------|
| Gender                    | Male                |
| Material - Metal          | Brass               |
| Material - Plating Mating | Silver              |
| Packaging Type            | Bag                 |
| Wire Insulation Diameter  | 5.00mm (.197") max. |
| Wire Size AWG             | 12                  |
| Wire Size mm²             | N/A                 |

**Material Info**

**Reference - Drawing Numbers**

|                       |               |
|-----------------------|---------------|
| Product Specification | PS-54478-001  |
| Sales Drawing         | SD-55125-4*** |



**EU RoHS**

**China RoHS**

**Compliance Status**

**Not Reviewed**

**REACH SVHC**

Not Reviewed

**Halogen-Free**

**Status**

**Not Reviewed**

**Need more information on product environmental compliance?**

Email [productcompliance@molex.com](mailto:productcompliance@molex.com)  
 For a multiple part number RoHS Certificate of Compliance, [click here](#)

Please visit the [Contact Us](#) section for any non-product compliance questions.

**Search Parts in this Series**

[55125Series](#)

**Mates With**

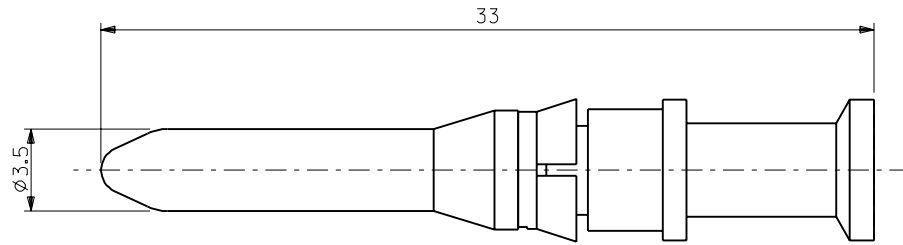
[54297](#)

**Use With**

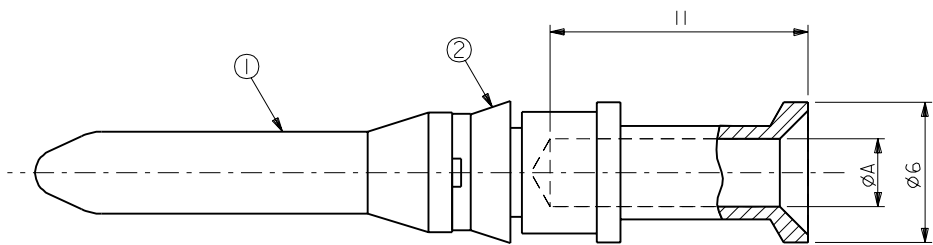
[55348](#) housing

DWG. NO. SD-55125-4\*\*\*

| 部番<br>NO. | 部品名<br>PARTS NAME                | 個数<br>QUAN. | 材質<br>MATERIAL                |
|-----------|----------------------------------|-------------|-------------------------------|
| ①         | φ3.5 ピンコンタクト<br>φ3.5 PIN CONTACT | 1           | 黄銅, 銀メッキ<br>BRASS, Ag PLATING |
| ②         | リテーナー<br>RETAINER                | 1           | 66ナイロン<br>NYLON 66            |



- 注) NOTES:
1. 嵌合相手 : 54297-9\*\*\*  
MATING SOCKET CONTACT : 54297-9\*\*\*
  2. 適用引き抜き工具 : 57388-6000  
APPLICABLE EXTRACTION TOOL : 57388-6000
  3. 圧着工具の 57388-5200にはロケーター  
(57388-5202) が付属されています。  
LOCATOR (57388-5202) IS ATTACHED TO 57388-5200  
OF THE CRIMP TOOL.



|                     |                       |            |                                 |                                       |   |                            |                          |      |                     |  |
|---------------------|-----------------------|------------|---------------------------------|---------------------------------------|---|----------------------------|--------------------------|------|---------------------|--|
| 57388-5202          |                       | 57388-5200 | 9.5±0.4                         | 5                                     | 5.5~6   | #0                         | 黒<br>BLACK               | 3.5  | 55125-4231          |  |
| 58487-0000          | 57388-1000            | 57388-5000 |                                 |                                       | 3.5~4   | #12                        | 白<br>WHITE               | 2.85 | 55125-4131          |  |
| △3 ロケーター<br>LOCATOR | 半自動<br>SEMI-AUTOMATIC | 手動<br>HAND | 皮剥長さ(mm)<br>STRIPPING LENGTH    | 被覆外径(φmm MAX.)<br>INSULATION DIAMETER | 断面積 (mm <sup>2</sup> )<br>SQ (mm <sup>2</sup> ) | 電線径(AWG)<br>WIRE SIZE(AWG) | リテーナー色<br>RETAINER COLOR | A    | 製品番号<br>ENG. NUMBER |  |
| 圧着工具<br>CRIMP TOOL  |                       |            | 適用電線範囲<br>APPLICABLE WIRE RANGE |                                       |   |                            |                          |      |                     |  |

|                      |  |  |  |                  |  |   |  |
|----------------------|--|--|--|------------------|--|---|--|
| 材料<br>MATERIAL       |  |  |  | 表参照<br>SEE TABLE |  | molex MOLEX-JAPAN CO.,LTD.<br>日本モレックス株式会社 |  |
| 仕上げ<br>FINISH        |  |  |  | 表参照<br>SEE TABLE |  | REVISE ONLY ON CAD SYSTEM                 |  |
| 適用電線範囲<br>WIRE RANGE |  |  |  | 表参照<br>SEE TABLE |  | TITLE 名称                                  |  |
| 被覆外径<br>INS. RANGE   |  |  |  | 表参照<br>SEE TABLE |  | φ3.5 PIN CONTACT ASS'Y<br>(MACHINED TYPE) |  |
| DRAWN BY<br>CHK'D BY |  |  |  | DATE             |  | DWG. NO.                                  |  |
| APP'D BY<br>DATE     |  |  |  | 尺度<br>SCALE      |  | 5-1                                       |  |
| SD-55125-4***        |  |  |  | REV              |  | B   |  |

| 角度 ANGLE            | 公差    | 記号 | 変更内容                        | DR. CHK.  | 日付       |
|---------------------|-------|----|-----------------------------|-----------|----------|
| 30° 以上 OVER         | +0.3  | B  | 変更<br>REVISED (J02008-0149) | S.A. J.M. | 08/10/26 |
| 10° 以上 30° 未満 UNDER | +0.25 | A  | 変更<br>REVISED (J090603)     | J.M. Y.I. | 98/11/06 |
| 10° 未満 UNDER        | +0.2  | 0  | 新規作成<br>PROPOSED (J080621)  | J.M. Y.I. | 97/11/05 |