

PLEASE CHECK WWW.MOLEX.COM FOR LATEST PART INFORMATION

Part Number: **0447691403**
Status: **Active**
Overview: microfit_30
Description: 3.00mm (.118") Pitch Micro-Fit 3.0, BMI™ Receptacle Header, Dual Row, Vertical, with Press-fit Plastic Pegs, 0.8µm (30µ") Gold (Au) Selective, 14 Circuits

Documents:

[3D Model](#) [Product Specification PS-44300-001 \(PDF\)](#)
[Drawing \(PDF\)](#) [RoHS Certificate of Compliance \(PDF\)](#)

Agency Certification

CSA LR19980
TUV R72081037
UL E29179

General

Product Family PCB Receptacles
Series 44769
Application Board-to-Board, Wire-to-Board
Overview microfit_30
Product Literature Order No USA-106
Product Name Micro-Fit 3.0 BMI™

Physical

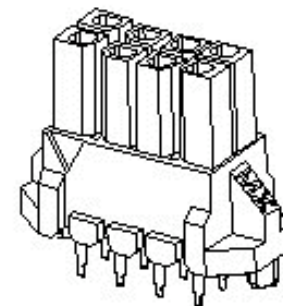
Circuits (Loaded) 14
Durability (mating cycles max) 30
Flammability 94V-0
Glow-Wire Compliant No
Material - Metal Phosphor Bronze
Material - Plating Mating Gold
Material - Plating Termination Tin
Number of Rows 2
Orientation Vertical
PCB Locator Yes
PCB Retention Yes
PCB Thickness Recommended (in) 0.062 In
PCB Thickness Recommended (mm) 1.60 mm
Packaging Type Tray
Pitch - Mating Interface (in) 0.118 In
Pitch - Mating Interface (mm) 3.00 mm
Plating min: Mating (µin) 30
Plating min: Mating (µm) 0.75
Plating min: Termination (µin) 100
Plating min: Termination (µm) 2.5
Polarized to PCB Yes
Surface Mount Compatible (SMC) No
Temperature Range - Operating -40°C to +105°C
Termination Interface: Style Through Hole

Electrical

Current - Maximum per Contact 5A
Voltage - Maximum 250V

Solder Process Data

Duration at Max. Process Temperature (seconds) 5
Lead-free Process Capability Wave Capable (TH only)
Max. Cycles at Max. Process Temperature 1



Series

image - Reference only

EU RoHS

ELV and RoHS Compliant
REACH SVHC
Not Reviewed
Halogen-Free Status
Not Reviewed

China RoHS



Need more information on product environmental compliance?

Email productcompliance@molex.com
For a multiple part number RoHS Certificate of Compliance, [click here](#)

Please visit the [Contact Us](#) section for any non-product compliance questions.

Search Parts in this Series

44769Series

Mates With

44428 , 44300 , 44432

Process Temperature max. C

260

Material Info

Reference - Drawing Numbers

Packaging Specification

PK-44769-001

Product Specification

PS-44300-001, RPS-44300-001

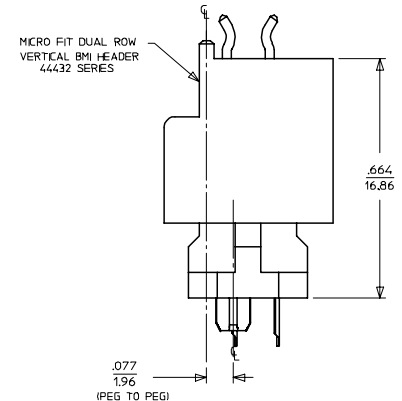
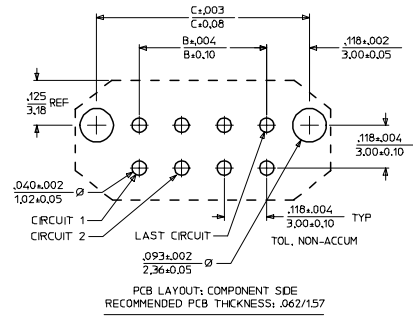
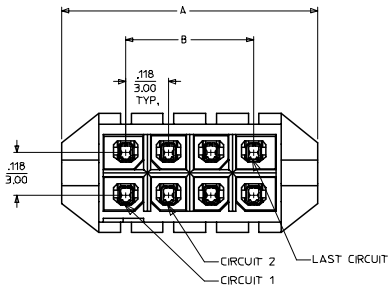
Sales Drawing

SD-44769-001

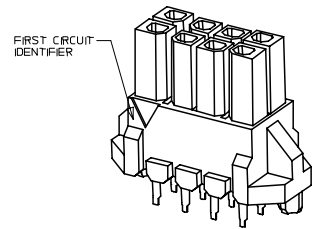
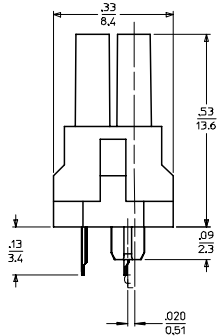
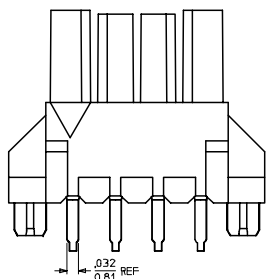
This document was generated on 05/21/2010

PLEASE CHECK WWW.MOLEX.COM FOR LATEST PART INFORMATION

CIRCUIT SIZE	DIM. "A"	DIM. "B"	DIM. "C"	MATERIAL NUMBER	NUMBER OF POSITIONS	PLATING OPTION
4	.472/(12.00)	.118/(3.00)	.354/(9.00)	44769-0401	04	A
6	.591/(15.00)	.236/(6.00)	.472/(12.00)	44769-0402	04	B
8	.709/(18.00)	.354/(9.00)	.591/(15.00)	44769-0403	04	C
10	.827/(21.00)	.472/(12.00)	.709/(18.00)	44769-0601	06	A
12	.945/(24.00)	.591/(15.00)	.827/(21.00)	44769-0602	06	B
14	1.063/(27.00)	.709/(18.00)	.945/(24.00)	44769-0603	06	C
16	1.181/(30.00)	.827/(21.00)	1.063/(27.00)	44769-0801	08	A
18	1.299/(33.00)	.945/(24.00)	1.181/(30.00)	44769-0802	08	B
20	1.417/(36.00)	1.063/(27.00)	1.299/(33.00)	44769-0803	08	C
22	1.535/(39.00)	1.181/(30.00)	1.417/(36.00)	44769-1001	10	A
24	1.654/(42.00)	1.299/(33.00)	1.535/(39.00)	44769-1002	10	B
				44769-1003	10	C
				44769-1201	12	A
				44769-1202	12	B
				44769-1203	12	C
				44769-1401	14	A
				44769-1402	14	B
				44769-1403	14	C
				44769-1601	16	A
				44769-1602	16	B
				44769-1603	16	C
				44769-1801	18	A
				44769-1802	18	B
				44769-1803	18	C
				44769-2001	20	A
				44769-2002	20	B
				44769-2003	20	C
				44769-2201	22	A
				44769-2202	22	B
				44769-2203	22	C
				44769-2401	24	A
				44769-2402	24	B
				44769-2403	24	C



MATED DIMENSIONS
(FOR ALIGNMENT OF PCB'S IN X & Y DIRECTIONS)



NOTES:
 1. MATERIAL:
 HOUSING: HIGH TEMP. NYLON, GLASS FILLED, UL 94V-0, COLOR - BLACK
 TERMINALS: PHOSPHOR BRONZE ALLOY
 2. FINISH:
 (A) - .000100/0.00254 MIN. TIN OVER
 .000050/0.00127 MIN. NICKEL
 (B) - .000015/0.00039 MIN. SELECTIVE GOLD IN CONTACT AREA,
 .000100/0.00254 MIN. SELECTIVE TIN IN PC TAIL AREA,
 BOTH OVER .000050/0.00127 MIN. NICKEL
 (C) - .000030/0.00076 MIN. SELECTIVE GOLD IN CONTACT AREA,
 .000100/0.00254 MIN. SELECTIVE TIN IN PC TAIL AREA,
 BOTH OVER .000050/0.00127 MIN. NICKEL
 * THE PRIMARY SHIPPING CARTON WILL BE LABELED "COMPLIANT TO"
 RoHS DIRECTIVE 2002/95/EC AND ELV ANNEX I OF DIRECTIVE 2000/53/EC."
 CARTONS WITHOUT THIS LABEL MAY CONTAIN PRODUCT WITH TIN/LEAD
 IN THE PC TAIL AREA.
 3. PRODUCT SPECIFICATIONS: PS-44300-001
 4. PACKAGING SPECIFICATION: PK-44769-001.
 5. MATES WITH MOLEX MICRO-FIT BMI HEADER SERIES 44432, 44428, AND 44300.
 6. MOLEX RECOMMENDS THE USE OF MICRO-FIT TEST PLUG (SERIES 44242) WHENEVER
 CONTINUITY TESTING IS PERFORMED. TEST PLUGS MUST NOT BE USED TO MAKE OR
 BREAK UNDER LOAD. MOLEX DOES NOT RECOMMEND USING STANDARD MATING
 COMPONENTS (SERIES 44432, 44428, OR 44300) FOR TESTING PURPOSES.

ADD MATING DIMENSIONS FC NO: UCP2005-2881 DRWN: JLOWE 2005/07/07 CHKD: SSOUSEK 2005/07/13 APPR: ESMITH 2005/07/15	QUALITY SYMBOLS - 0 - 0	GENERAL TOLERANCES (UNLESS SPECIFIED)	SCALE --- INCH	DESIGN UNITS INCH	THIRD ANGLE PROJECTION	REVISE ON CAD ONLY		
		mm INCH	DIMENSION STYLE IN/MM		TITLE			
		4 PLACES ± --- ± --- 3 PLACES ± --- ± .010 2 PLACES ± 0.25 ± .014 1 PLACE ± 0.35 ± ---	DRAWN BY DATE BURLESON 2000/07/13		CHECKED BY DATE MUELLER 2000/07/13		APPROVED BY DATE EDGLEY 2000/07/13	
		ANGULAR ±1/2°	DRAFT WHERE APPLICABLE		MATERIAL NO. DOCUMENT NO. SHEET NO.		SEE CHART SD-44769-001 1 OF 1	
E1		MUST REMAIN WITHIN DIMENSIONS		THIS DRAWING CONTAINS INFORMATION THAT IS PROPRIETARY TO MOLEX INCORPORATED AND SHOULD NOT BE USED WITHOUT WRITTEN PERMISSION				