

PLEASE CHECK WWW.MOLEX.COM FOR LATEST PART INFORMATION

Part Number: [0352720620](#)
Status: **Active**
Description: 6.00mm (.236") Tab Wire-to-Wire Plug Housing, Secondary Lock, 6 Circuits

Documents:

[Drawing \(PDF\)](#) [RoHS Certificate of Compliance \(PDF\)](#)
[Product Specification PS-49358-001 \(PDF\)](#)

General

Product Family	Crimp Housings
Series	35272
Comments	Polarized to Mating Part
Product Name	N/A

Physical

Circuits (maximum)	6
Color - Resin	Natural
Gender	Male
Glow-Wire Compliant	No
Keying to Mating Part	None
Lock to Mating Part	Yes
Material - Resin	Polyester
Number of Rows	2
Packaging Type	Bag
Panel Mount	No
Pitch - Mating Interface (in)	0.354 In
Pitch - Mating Interface (mm)	9.00 mm
Pitch - Term. Interface (in)	0.354 In
Pitch - Term. Interface (mm)	9.00 mm
Polarized to Mating Part	Yes
Ports	1
Stackable	No
Temperature Range - Operating	-40°C to +85°C

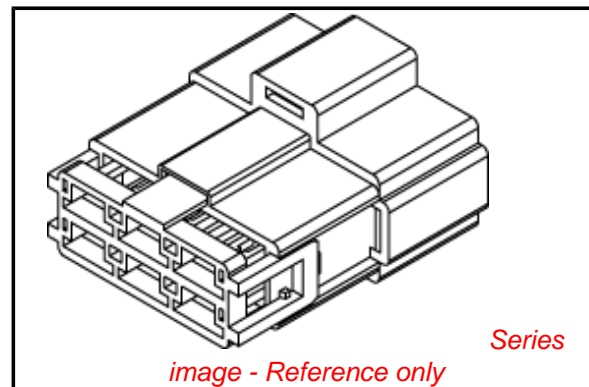
Electrical

Current - Maximum per Contact	6A
-------------------------------	----

Material Info

Reference - Drawing Numbers

Product Specification	PS-49358-001
Sales Drawing	SD-35272-001



EU RoHS

**ELV and RoHS
Compliant**
REACH SVHC
 Not Reviewed
**Halogen-Free
Status**

China RoHS



**Need more information on product
environmental compliance?**

Email productcompliance@molex.com
 For a multiple part number RoHS Certificate of Compliance, [click here](#)

Please visit the [Contact Us](#) section for any non-product compliance questions.

Search Parts in this Series

[35272Series](#)

Mates With

[35270 Wire-to-Wire Receptacle Housing](#)

Use With

[35725 Slip-In Wire-to-Wire Terminal](#)

7 6 5 4 3 2 1

E

D

C

B

A

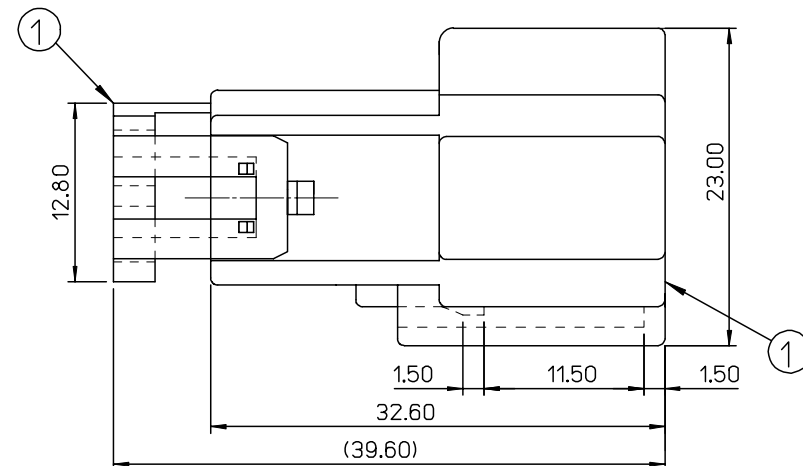
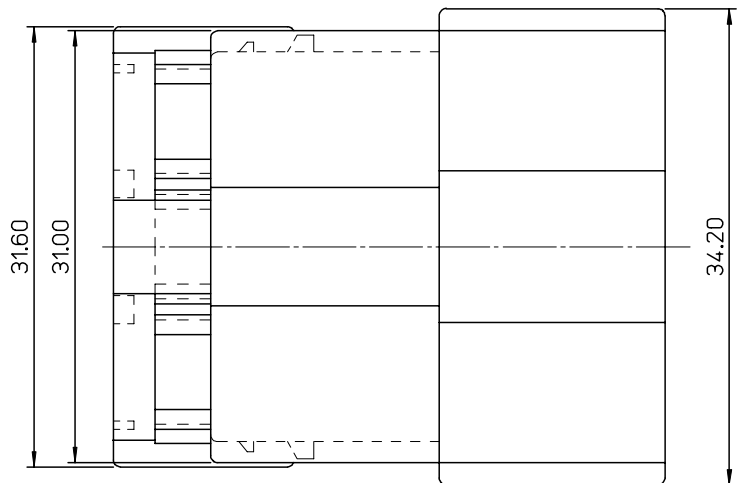
E

D

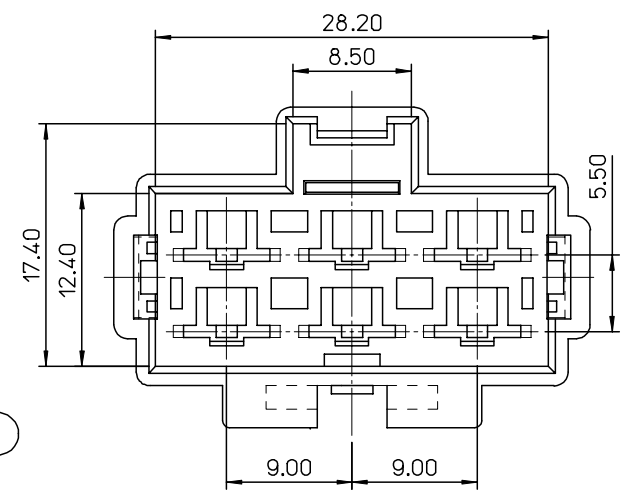
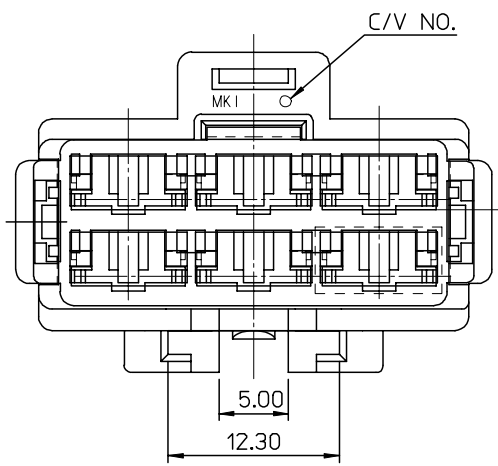
C

B

A



NO.	PART NAME	PART NO.	Q'TY
1	POWERMATE MALE HSG 6P	35272-0680	1
2	POWERMATE MALE TPA 6P	35273-0680	1



NOTE
 1. ASSEMBLY PART NO. : 35272-0620
 2. APPLICABLE TERMINAL : 35725-1900

CHANGED OF NOTE	DESCRIPTION
EC NO: KOR2007-0142	
DRWN: EOKIM 2007/05/08	
CHKD: BCY00N 2007/05/08	
APPR: YUNSJKIM 2007/05/08	

QUALITY SYMBOLS	DESCRIPTION
	=0
	=0

GENERAL TOLERANCES (UNLESS SPECIFIED)	
	mm
4 PLACES	± ---
3 PLACES	± ---
2 PLACES	± 0.2
1 PLACE	± 0.2
ANGULAR ± 1 °	

DRAFT WHERE APPLICABLE
MUST REMAIN
WITHIN DIMENSIONS

DIMENSION STYLE	
MM ONLY	
DRAWN BY	DATE
EOKIM	07/01/16
CHECKED BY	DATE
BCY00N	07/01/16
APPROVED BY	DATE
EJHUNG	07/01/16
MATERIAL NO.	
352720620	
SIZE	
A4	

SCALE	DESIGN UNITS	THIRD ANGLE PROJECTION
2:1	METRIC	
TITLE		
250 MALE HSG 6P FOR IGNITION KEY MODULE		
MOLEX INCORPORATED		
MATERIAL NO.	DOCUMENT NO.	SHEET NO.
352720620	SD-35272-001	1 OF 01
THIS DRAWING CONTAINS INFORMATION THAT IS PROPRIETARY TO MOLEX INCORPORATED AND SHOULD NOT BE USED WITHOUT WRITTEN PERMISSION		

6

5

4

3

2

1