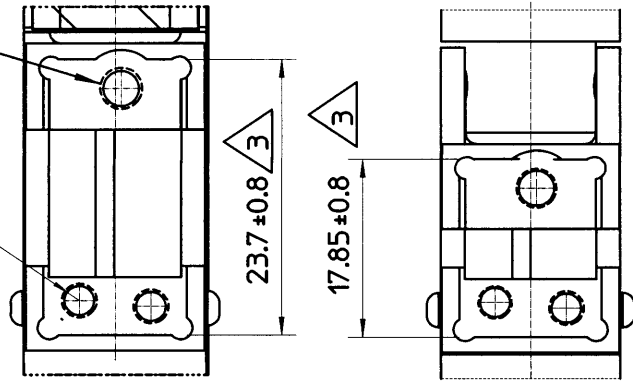


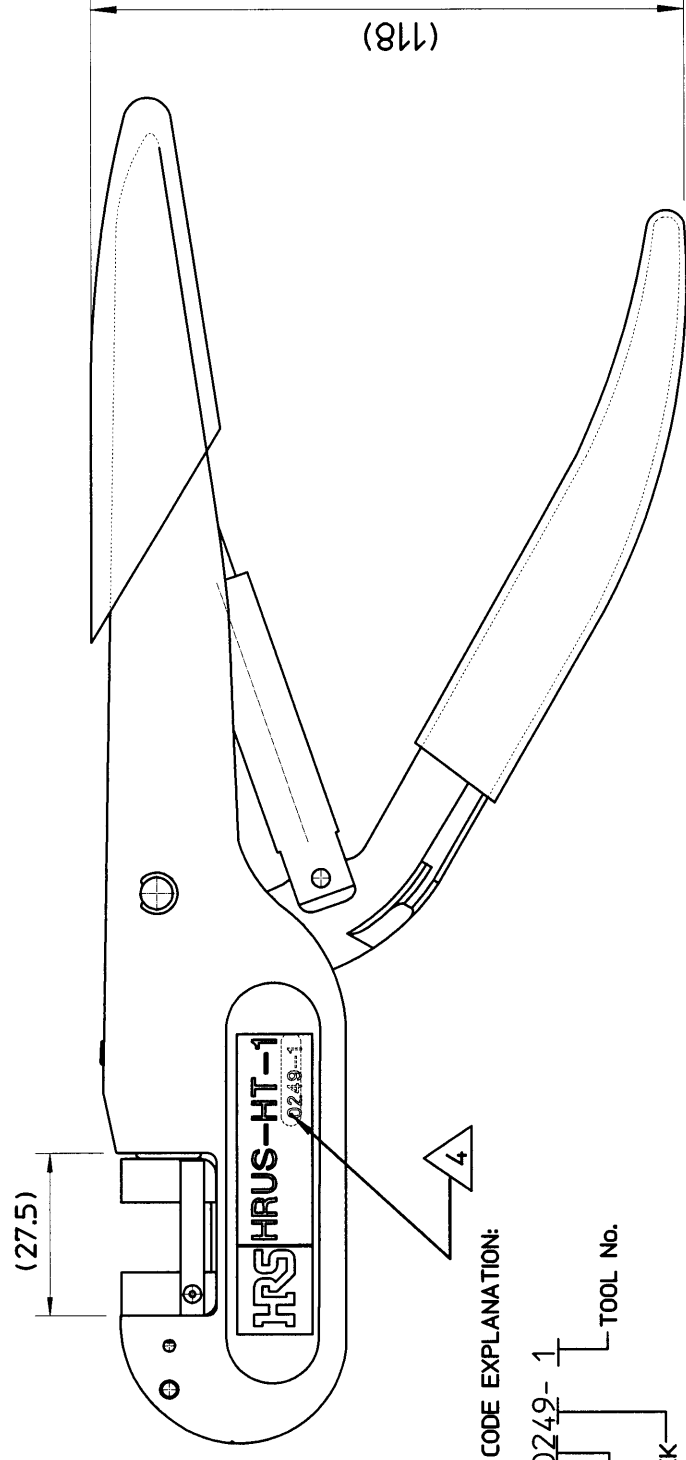
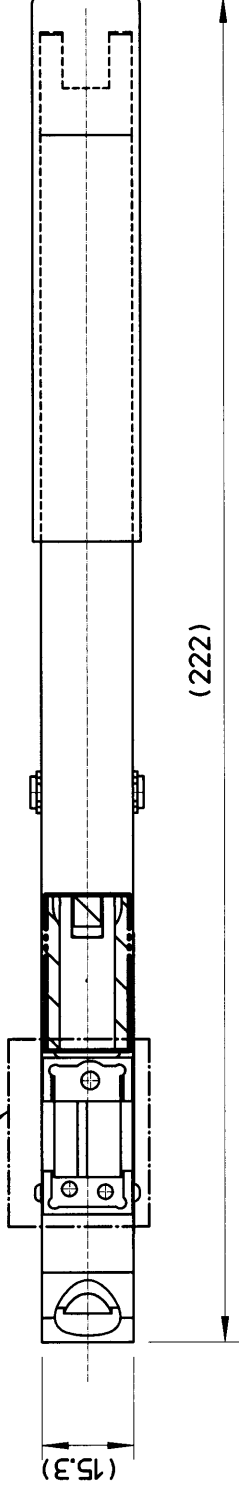
THE INFORMATION CONTAIN HEREIN IS PROPRIETARY TO HIROSE ELECTRIC (USA), INC., ALL RIGHTS THEREIN ARE RESERVED AND SHALL NOT BE USED, DUPLICATED, OR FURTHER DISSEMINATED FOR ANY PURPOSE WITHOUT THE CONSENT OF HIROSE ELECTRIC (USA), INC.

2X M2.5 X 0.45

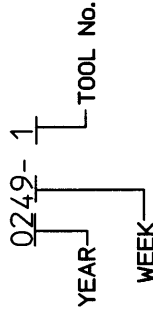


Detail 1
Scale 2:1

see Detail 1



DATE CODE EXPLANATION:



8. PACKAGING: CARDBOARD BOX. SIZE: 254mm X 76mm X 51mm (10" X 3" X 2").

7. THIS HAND CRIMP TOOL TO BE USED WITH THE INTERCHANGABLE DIE SETS FOR CRIMPING DF3, DF11 AND DF13 CONNECTOR SERIES.

6. TOOL KIT TO BE PACKAGED IN THE ZIP-LOCK PLASTIC BAG AS SHOWN ON FIG. 1.

LABEL TO BE APPLIED AS SHOWN.

5. FOR ASSEMBLY AND OPERATION OF THIS HAND TOOL, REFER TO

INSTRUCTION MANUAL P/No. PS075.

4. DATE CODE AND TOOL No.; SEE EXAMPLE FOR EXPLANATION.

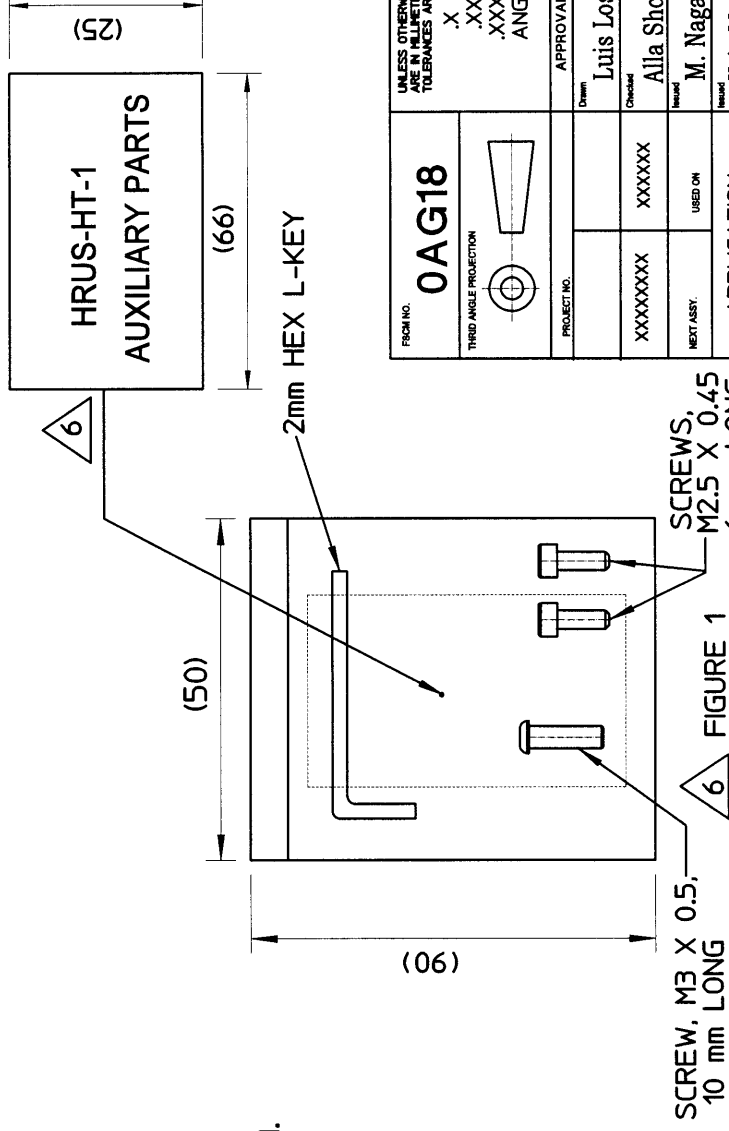
3. DIMENSION 23.7 APPLIES WHEN LEVER IS IN 'OPEN' POSITION;

DIMENSION 17.85 APPLIES WHEN THE LEVER IS IN 'CLOSED' POSITION.

2. DIMENSIONS IN () ARE FOR REFERENCE ONLY.

1. DIMENSIONING AND TOLERANCING PER ANSI/ASME Y14.5M-1994

NOTES (UNLESS OTHERWISE SPECIFIED)



CUSTOMER USE DRAWING

FROM NO. 0AG18	THIRD ANGLE PROJECTION	UNLESS OTHERWISE SPECIFIED DIMENSIONS ARE IN MILLIMETERS TOLERANCES ARE: X - ±0.1 .XX - ±0.05 .XXX - ±0.03 ANGLE - ±1°	APPROVALS		DATE
			Drawn Luis Lostaunau	DATE 02/06/03	
PROJECT NO.	XXXXXXX	Checked Alla Shehur	DATE 02/07/03	CL NUMBER 5910-8500-2	REV. B
NEXT ASST.	USED ON	Checked M. Nagashima	DATE 02/07/03	PART NUMBER HRUS-HT-1	SIZE B
APPLICATION		Checked Kris McGuire	DATE 02/10/03	SCALE N/A	SHEET 1 OF 1

HRS HIROSE ELECTRIC (U.S.A), INC
SIMI VALLEY, CALIFORNIA 93065

REVISIONS

ZONE	REV.	DESCRIPTION	DATE	APPROVED
	N/R	NEW RELEASE	2/10/03	Kmg
	A	REVISED PER DCN# 0864	3/04/03	A.S.
	B	REVISED PER DCN# 0872	5.19.03	A.S.