

- \* LVPECL Output
- \* Fast Delivery
- \* Industry Standard Packaging

- Applications**
- \* Serial Communications
  - \* Routers
  - \* Switches
  - \* WAN Interfaces
  - \* Test Equipment

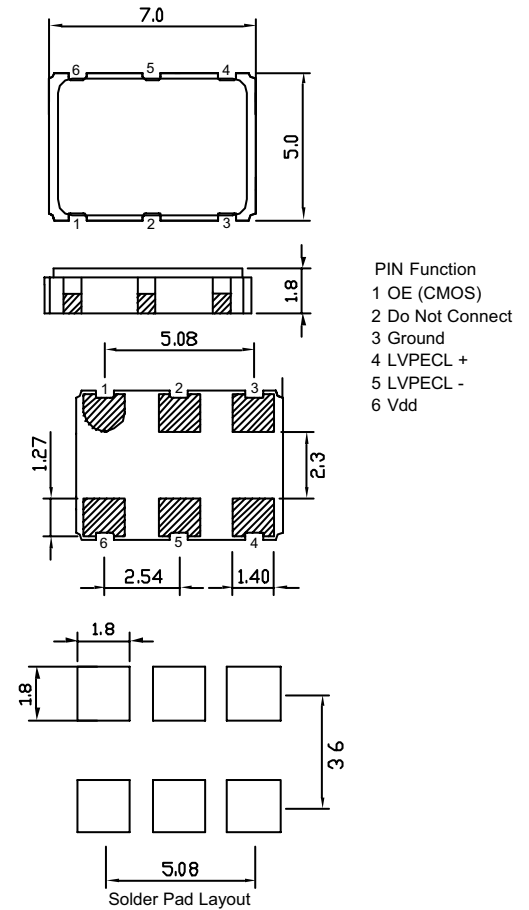
**Part Numbering Example: CHE Z - A5 BP - 222.5792 TS**

CHE	Z	A5	BP	222.5792	TS
SERIES	PACKAGING OPTIONS	OPERATING TEMP.	STABILITY	FREQUENCY	TRI-STATE
CHE	Blank = Bulk Z = Tape and Reel	Blank = 0°C ~ +70°C A5 = -20°C ~ +70°C A7 = -40°C ~ +85°C	Blank = ±100 ppm BP = ±50 ppm		TS = Tri-State

Specifications:	Min	Typ	Max	Unit
Frequency Range:	200		800	MHz
Stability:	-50		+ 50	ppm
Supply Voltage:	3.135	3.3	3.465	V
Vdd Rise Time:	100			μS
Operating Temperature:	-20		+ 70	°C
Storage Temperature:	-55		+ 125	°C
Duty Cycle:	45		55	%
Start-Up Time:		3	10	mS
Aging: (ppm/1st Year) Ta=25C, Vdd=3.3V			5	ppm
Supply Current:			140	mA
Short Circuit Current:		± 50		mA
RMS Period Jitter:		15		pS
RMS Integrated Jitter: 12kHz to 20MHz		20		pS
Phase Noise @ 10kHz:			-90	dBc/Hz
Output Voltage: Voh	Vdd - 1.025			V
Vol			Vdd - 1.62	V
Rise/Fall Time:		0.4	0.8	nS
Output Level:	LVPECL			
Packaging:	Tape and Reel 1000 pcs per Reel			

**CHE**

Dimensions are in mm



**LVPECL Levels Test Circuit**

