

PLEASE CHECK WWW.MOLEX.COM FOR LATEST PART INFORMATION

Part Number: [0430250600](#)
Status: **Active**
Overview: [microfit_30](#)
Description: 3.00mm (.118") Pitch Micro-Fit 3.0™ Receptacle Housing, Dual Row, 6 Circuits

Documents:

[3D Model](#) [Product Specification PS-43045 \(PDF\)](#)
[Drawing \(PDF\)](#) [RoHS Certificate of Compliance \(PDF\)](#)

Agency Certification

| | |
|-----|-----------|
| CSA | LR19980 |
| TUV | R72081037 |
| UL | E29179 |

General

| | |
|-----------------------------|--|
| Product Family | Crimp Housings |
| Series | 43025 |
| Comments | Glow Wire Equivalent Part Number 430250608 . Polarized to Mating Part |
| Overview | microfit_30 |
| Product Literature Order No | USA-106 |
| Product Name | Micro-Fit 3.0™ |

Physical

| | |
|-------------------------------|-----------------|
| Circuits (maximum) | 6 |
| Circuits Detail | 6 |
| Color - Resin | Black |
| Flammability | 94V-0 |
| Gender | Female |
| Glow-Wire Compliant | No |
| Keying to Mating Part | None |
| Lock to Mating Part | Yes |
| Material - Resin | Polyester |
| Number of Rows | 2 |
| Packaging Type | Bag |
| Panel Mount | No |
| Pitch - Mating Interface (in) | 0.118 In |
| Pitch - Mating Interface (mm) | 3.00 mm |
| Polarized to Mating Part | Yes |
| Stackable | No |
| Temperature Range - Operating | -40°C to +105°C |

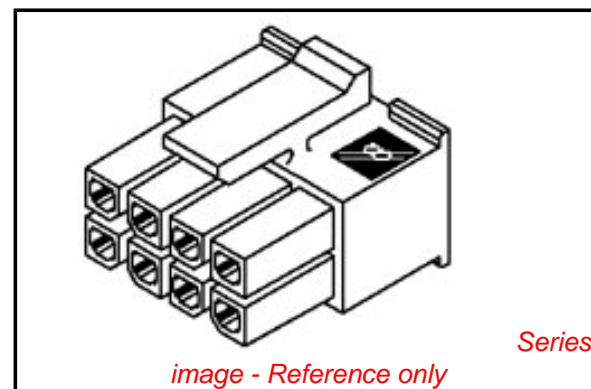
Electrical

| | |
|-------------------------------|----|
| Current - Maximum per Contact | 5A |
|-------------------------------|----|

Material Info

Reference - Drawing Numbers

| | |
|-------------------------|--|
| Packaging Specification | PK-43025-001 |
| Product Specification | PS-43045, RPS-43045-001, RPS-43045-003, RPS-43045-004 |
| Sales Drawing | SDA-43025-**** |
| Test Summary | TS-43045-001 |



EU RoHS

ELV and RoHS Compliant
REACH SVHC
Contains SVHC: No
Halogen-Free Status

China RoHS



Not Halogen-Free

Need more information on product environmental compliance?

Email productcompliance@molex.com
 For a multiple part number RoHS Certificate of Compliance, [click here](#)

Please visit the [Contact Us](#) section for any non-product compliance questions.

Search Parts in this Series

[43025Series](#)

Mates With

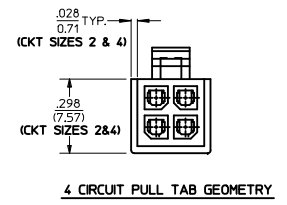
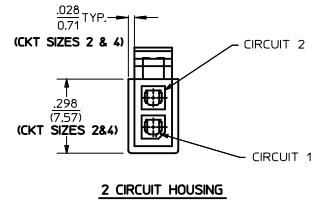
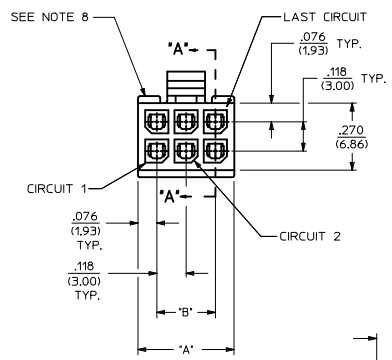
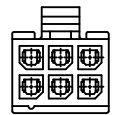
Micro-Fit 3.0™ Plug Housing [43020](#). Micro-Fit 3.0™ Header [43045](#). Micro-Fit 3.0™ Test Plug [44242](#)

Use With

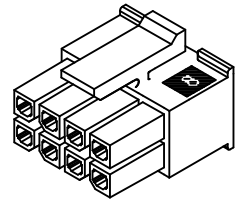
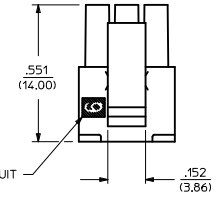
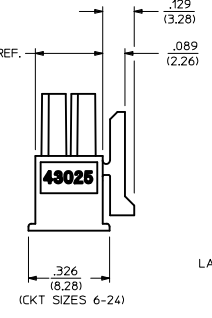
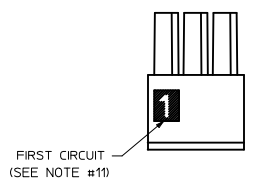
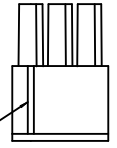
Micro-Fit 3.0™ Crimp Terminal [43030](#)

PLEASE CHECK WWW.MOLEX.COM FOR LATEST PART INFORMATION

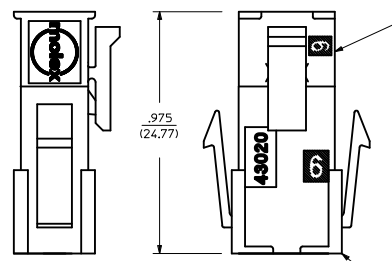
| PART CHARACTERISTICS | | CKT. NO. | DIM. 'A' | DIM. 'B' |
|----------------------|----------------------|----------|---------------|---------------|
| NUMBER OF POSITION | ASSEMBLY ITEM NUMBER | | | |
| 02 | 43025-0200 | 2 | .152/(3.86) | N/A |
| 04 | 43025-0400 | 4 | .270/(6.85) | .118/(3.00) |
| 06 | 43025-0600 | 6 | .388/(9.85) | .236/(6.00) |
| 08 | 43025-0800 | 8 | .506/(12.85) | .354/(9.00) |
| 10 | 43025-1000 | 10 | .624/(15.85) | .472/(12.00) |
| 12 | 43025-1200 | 12 | .742/(18.85) | .591/(15.00) |
| 14 | 43025-1400 | 14 | .860/(21.85) | .709/(18.00) |
| 16 | 43025-1600 | 16 | .978/(24.85) | .827/(21.00) |
| 18 | 43025-1800 | 18 | 1.096/(27.85) | .945/(24.00) |
| 20 | 43025-2000 | 20 | 1.215/(30.85) | 1.063/(27.00) |
| 22 | 43025-2200 | 22 | 1.333/(33.85) | 1.181/(30.00) |
| 24 | 43025-2400 | 24 | 1.451/(36.85) | 1.299/(33.00) |



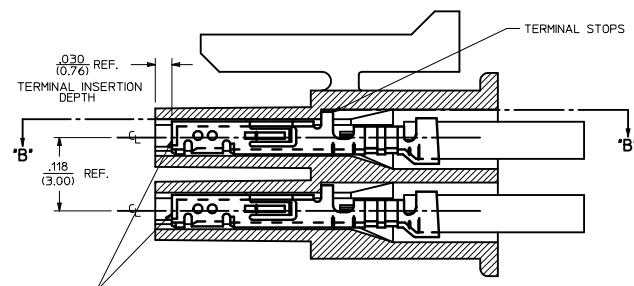
HOUSING SHOWN WITH OPTIONAL FIRST CIRCUIT IDENTIFIER RIB (SEE NOTE #11)



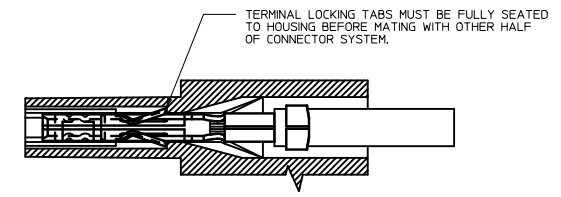
RECEPTACLE ISO VIEW (8 CIRCUIT SHOWN) (SEE NOTE 9 FOR TESTING)



MATED MICRO-FIT CONNECTOR



SECTION "A"- "A" WITH TERMINAL (SCALE 10:1)



SECTION "B"- "B" (SCALE 10:1)

NOTES:
 1) HOUSING MATERIAL: UNFILLED POLYESTER, RATED UL, 94V-0, COLOR IS BLACK.
 2) FINISH: N/A
 3) PRODUCT SPECIFICATION: PS-43045
 4) PACKAGING SPECIFICATION: PK-43025-001
 5) THIS RECEPTACLE MATES WITH 43020, 43045.
 6) THIS RECEPTACLE TO BE USED WITH MOLEX FEMALE TERMINAL #43030-****. SEE SECTION "A"- "A" FOR TERMINAL ORIENTATION IN HOUSING.
 7) FOR OVERMOLDING PARAMETERS SEE ENGINEERING SPECIFICATION #SDS-43025-1000.
 8) TOP PULL TABS ARE NOT AVAILABLE ON 2 AND 4 CIRCUIT PARTS.
 9) MOLEX RECOMMENDS THE USE OF MICRO-FIT TEST PLUG, SERIES NO. 44242-**** WHENEVER TESTING IS PERFORMED. TEST PLUGS MUST NOT BE USED FOR MAKE OR BREAK UNDER LOAD. MOLEX DOES NOT RECOMMEND USING STANDARD MATING COMPONENTS FOR HARNESS TESTING PURPOSES.
 10) SOME HOUSINGS MAY HAVE A SMALL GATE BLEMISH NEAR THE GATE THAT DOES NOT AFFECT FUNCTIONALITY.
 11) HOUSINGS MAY HAVE EITHER AN IDENTIFIER RIB OR "1" SYMBOL ENGRAVE TO INDICATE CIRCUIT #1.
 12) THIS PART CONFORMS TO CLASS 'B' REQUIREMENTS OF COSMETIC SPECIFICATION PS-45499-002.

| | |
|---------------------|------------|
| ADD PK SPEC NOTES | 2009/11/18 |
| EC NO: UCP2010-0075 | 2009/11/25 |
| DR: WASSON/SEK | 2009/11/25 |
| CHK: BELL | 2009/11/30 |
| APPR: SMITH | 2009/11/30 |
| M1 | |

| QUALITY SYMBOLS | GENERAL TOLERANCES (UNLESS SPECIFIED) | |
|--|---------------------------------------|-------------|
| | mm | INCH |
| ▽=0 | 4 PLACES ± | ± |
| ▽=0 | 3 PLACES ± | ±.010 |
| | 2 PLACES ± | ±.025 ±.014 |
| | 1 PLACE ± | ±.035 ±--- |
| | ANGULAR ±1/2° | |
| DRAFT WHERE APPLICABLE MUST REMAIN WITHIN DIMENSIONS | | |

| DIMENSION STYLE | |
|-----------------|------------|
| IN/MM | |
| DRAWN BY | DATE |
| A. F. G. | 1993/01/14 |
| CHECKED BY | DATE |
| B. A. P. | 1993/01/14 |
| APPROVED BY | DATE |
| R. A. S. | 1993/01/14 |

| | | |
|--|----------------|------------------------|
| SCALE | DESIGN UNITS | THIRD ANGLE PROJECTION |
| 4:1 | METRIC | |
| TITLE | | |
| MICRO-FIT (3.0) 2 THRU 24 CIRCUIT RECEPTACLE | | |
| MOLEX INCORPORATED | | |
| MATERIAL NO. | DOCUMENT NO. | SHEET NO. |
| SEE CHART | SDA-43025-**** | 1 OF 1 |
| SIZE D THIS DRAWING CONTAINS INFORMATION THAT IS PROPRIETARY TO MOLEX INCORPORATED AND SHOULD NOT BE USED WITHOUT WRITTEN PERMISSION | | |