

PLEASE CHECK WWW.MOLEX.COM FOR LATEST PART INFORMATION

Part Number: **0190220018**
Status: **Active**
Description: Krimpite™ Quick Disconnect, Male, for 14-16 AWG Wire, Box

Documents:

[Drawing \(PDF\)](#) [RoHS Certificate of Compliance \(PDF\)](#)

Agency Certification

CSA LR18689
 UL E32244

General

Product Family Quick Disconnects
 Series 19022
 Comments Economical
 Crimp Quality Equipment Yes
 MolexKits Yes
 Product Name Krimpite™
 Type Quick Disconnect

Physical

Barrel Type Closed
 Gender Male
 Glow-Wire Compliant No
 Insulation None
 Lock to Mating Part None
 Material - Metal Brass
 Material - Plating Mating Gold
 Material - Plating Termination 90/10 Tin Lead, 90/10 Tin-Lead
 Orientation Straight
 Packaging Type Bag
 Plating min: Mating (µin) 30
 Plating min: Mating (µm) 0.75
 Plating min: Termination (µin) 160
 Plating min: Termination (µm) 4
 Polarized to Mating Part No
 Tab Thickness 0.81mm (.032")
 Tab Width 6.35mm (.250")
 Temperature Range - Operating Per Wire Specification
 Wire Size AWG 14, 16
 Wire Size mm² 1.30 - 2.00

Electrical

Voltage - Maximum Per Wire Specification

Material Info

Old Part Number MCT-1

Reference - Drawing Numbers

Sales Drawing SD-19022-011

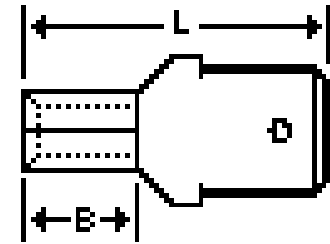


image - Reference only

—Series

EU RoHS

ELV and RoHS Compliant
REACH SVHC Contains SVHC: No
Halogen-Free Status
Not Reviewed

China RoHS



Need more information on product environmental compliance?

Email productcompliance@molex.com
 For a multiple part number RoHS Certificate of Compliance, [click here](#)

Please visit the [Contact Us](#) section for any non-product compliance questions.

Search Parts in this Series

19022Series

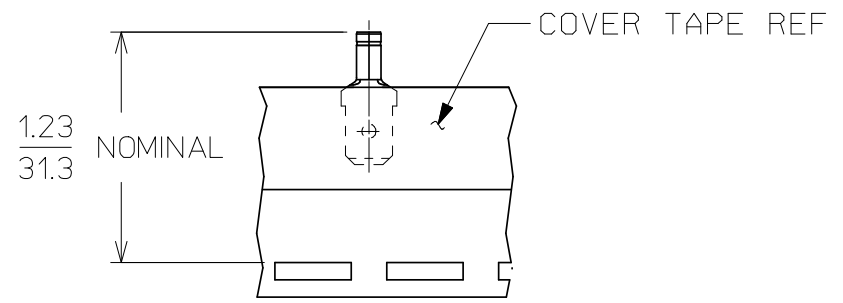
Application Tooling | FAQ

Tooling specifications and manuals are found by selecting the products below. Crimp Height Specifications are then contained in the Application Tooling Specification document.

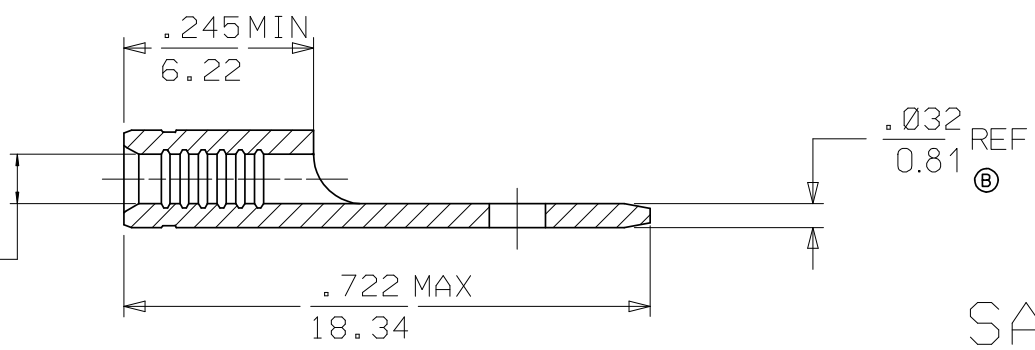
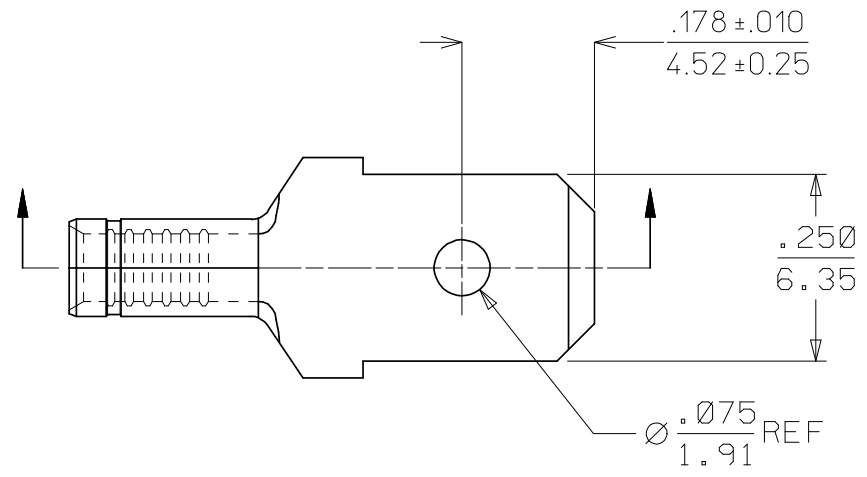
Global

| Description | Product # |
|--|-------------------|
| Hand Crimp Tool | <u>0640030100</u> |
| Hand Crimp Tool | <u>0640031200</u> |
| Crimp Head for the AT-200™ Pneumatic Hand Tool | <u>0640070100</u> |
| Crimp Head for the AT-200™ Pneumatic Hand Tool | <u>0640071200</u> |

| MATERIAL NO. | ENGINEERING NO. | DESCRIPTION |
|---------------|-----------------|------------------------------------|
| 190220018 | MCT-1 | ZINC CHROMATE PLATED |
| 190220057 (B) | SPL-0040 | TIN PLATED |
| 190220026 | MCT-1T | ZINC CHROMATE PLATED, TAPE MOUNTED |



TAPE MOUNTING LOCATION FOR 190220026, MCT-1T



SALES DRAWING

- (B) NOTES:
1. MATERIAL: BRASS
 2. FINISH: SEE CHART
 3. WIRE SIZE: 16-14 AWG (1.23-1.94 mm²)
 4. TAB DIMENSIONS CONFORM TO UL310 SPECIFICATIONS.
 5. PART IS ROHS COMPLIANT.

| DEL. NO. | EC. NO. | DRAWN BY | DATE | CHECKED BY | DATE | APPROVED BY | DATE | GENERAL TOLERANCES (UNLESS SPECIFIED) | | DIMENSION STYLE | | SCALE | DESIGN UNITS | THIRD ANGLE PROJECTION |
|---|---------------|------------|------------|------------|------------|-------------|------------|---------------------------------------|-------|---------------------------|-----|------------------|--------------|------------------------|
| | | | | | | | | mm | INCH | IN/MM | 4:1 | INCH | ☉ | |
| B | ETIC2007-0081 | R. STONE | 2007/08/14 | J. MACNEIL | 2007/08/16 | J. MACNEIL | 2007/08/16 | 4 PLACES ±--- | ±--- | IN/MM | 4:1 | INCH | ☉ | |
| | | J. MACNEIL | 2007/08/16 | J. MACNEIL | 2007/08/16 | | | 3 PLACES ±--- | ±.005 | | | | | |
| | | J. MACNEIL | 2007/08/16 | J. MACNEIL | 2007/08/16 | | | 2 PLACES ±0.13 | ±.01 | | | | | |
| | | | | | | | | 1 PLACE ±0.25 | ±--- | | | | | |
| | | | | | | | | ANGULAR ±1/2° | | | | | | |
| DRAFT WHERE APPLICABLE MUST REMAIN WITHIN DIMENSIONS | | | | | | | | SEE CHART | | DOCUMENT NO. SD-19022-011 | | SHEET NO. 1 OF 1 | | |
| THIS DRAWING CONTAINS INFORMATION THAT IS PROPRIETARY TO MOLEX INCORPORATED AND SHOULD NOT BE USED WITHOUT WRITTEN PERMISSION | | | | | | | | | | | | | | |