

PLEASE CHECK WWW.MOLEX.COM FOR LATEST PART INFORMATION

Part Number: [0191930372](#)
Status: **Active**
Description: VersaKrimp™ Ring Tongue Terminal for 4/0 AWG Wire

Documents:

[Drawing \(PDF\)](#) [RoHS Certificate of Compliance \(PDF\)](#)

Agency Certification

CSA LR18689
 UL E32244

General

Product Family Ring and Spade Terminals
 Series [19193](#)
 Comments Type I Noninsulated; Class 2
 Crimp Quality Equipment Yes
 Mil-Spec AS20659-124, MS20659-124
 Product Name VersaKrimp™
 Type Ring

Physical

Barrel Type Closed - Brazed
 Insulation None
 Material - Plating Mating Tin
 Packaging Type Bag
 Plating min: Mating (µin) 100
 Plating min: Mating (µm) 2.5
 Plating min: Termination (µin) 100
 Plating min: Termination (µm) 2.5
 Stud Size 1/2" (M12)
 Termination Interface: Style Crimp or Compression
 Wire Size AWG 4/0
 Wire Size mm² 96.3 - 117.0

Material Info

Old Part Number L-395-12

Reference - Drawing Numbers

Sales Drawing SD02051



image - Reference only

EU RoHS

**ELV and RoHS
 Compliant**

REACH SVHC

**Contains SVHC: No
 Halogen-Free
 Status**

China RoHS



**Need more information on product
 environmental compliance?**

Email productcompliance@molex.com
 For a multiple part number RoHS Certificate of
 Compliance, [click here](#)

Please visit the [Contact Us](#) section for any
 non-product compliance questions.

Search Parts in this Series

[19193Series](#)

Application Tooling | [FAQ](#)

*Tooling specifications and manuals are
 found by selecting the products below.
 Crimp Height Specifications are then
 contained in the Application Tooling
 Specification document.*

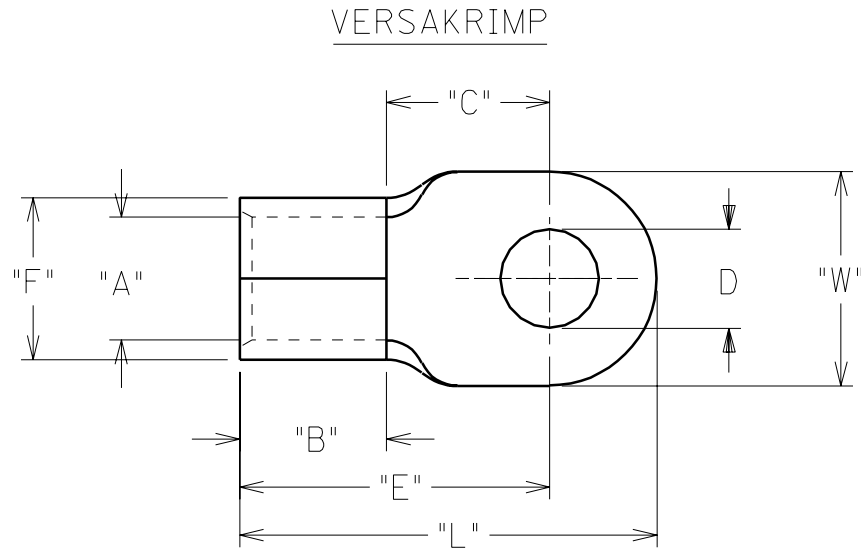
Global

Description	Product #
Manual tool for Crimping non- insulated 8AWG thru 4/0 Terminals	0192940008
Die Set (large) for the HHLS Hydraulic Crimper	0192900031

PART NUMBER	WIRE SIZE	"W"	"C" MIN	"E" MAX	"B" MIN	"L" MAX	"A" MIN	STOCK THICKNESS	"F" MAX	AVAILABLE STUD SIZE
L-395-	4/0	1.102 1.128	.822	1.653	.734	2.242	.622	.099 .102	.865	14, 38, 76, 12, 58
L-398-	4/0	1.227 1.253	1.292	2.123	.734	2.765	.622	.099 .102	.865	58, 34, 78

DRWG. NO. SD02051

(A)



VERSAKRIMP

MATERIAL: COPPER
PLATING: ELECTRO-TIN

STUD SIZE	±.005 "D"	
14	1/4"	.265
56	5/16"	.328
38	3/8"	.390
76	7/16"	.453
12	1/2"	.515
58	5/8"	.656
34	3/4"	.781
78	7/8"	.906

(A)

CUSTOMER DRAWING

DIMENSIONS SHOWN (METRIC) INCH	
UNLESS OTHERWISE SPECIFIED TOLERANCES: ANGULAR ± 1/2°	
	INCH METRIC
3 PLACE	± .005 ± 0.13
2 PLACE	± .01 ± 0.25
1 PLACE	± --- ± ---
DRAFT WHERE APPLICABLE MUST REMAIN WITHIN DIMENSIONS	
DRWG. BY LEM	CHK'D. BY
APP'D. BY	SCALE NO:NE

REVISE ONLY ON CAD SYSTEM	
TITLE "L" RING TONGUE TERMINAL	
molex ETC INC. PINELLAS PARK, FLA. 33781 U.S.A.	SHEET NO. DATE 70 /03 /02
PART NO. SEE CHART	DRWG. NO. SD02051
FILE NAME SDL395 DGN	THIS DRAWING CONTAINS INFORMATION THAT IS PROPRIETARY TO MOLEX-ETC INC. AND SHOULD NOT BE USED WITHOUT WRITTEN PERMISSION.
DIV.	SIZE A

A	ADD STUD SIZE & UPDATE TO CAD ET970953 08/20
LTR.	REVISIONS