

PLEASE CHECK WWW.MOLEX.COM FOR LATEST PART INFORMATION

Part Number: **5031491200**
Status: **Active**
Overview: clikmate wiretoboard connectors
Description: 1.50mm (.059") Pitch CLIK-Mate™ Wire-to-Board Housing, Dual Row, Positive Lock, 12 Circuits

Documents:

[3D Model](#) [Product Specification PS-503154-001 \(PDF\)](#)
[Drawing \(PDF\)](#) [RoHS Certificate of Compliance \(PDF\)](#)
[Product Specification PS-503148-001 \(PDF\)](#)

General

Product Family Crimp Housings
Series 503149
Overview clikmate wiretoboard connectors
Product Name CLIK-Mate™

Physical

Circuits (maximum) 12
Color - Resin Beige
Gender Plug
Glow-Wire Compliant No
Keying to Mating Part Yes
Lock to Mating Part Yes
Number of Rows 2
Packaging Type Bag
Panel Mount No
Pitch - Mating Interface (in) 0.059 In
Pitch - Mating Interface (mm) 1.50 mm
Polarized to Mating Part Yes
Stackable No
Temperature Range - Operating -25°C to +85°C

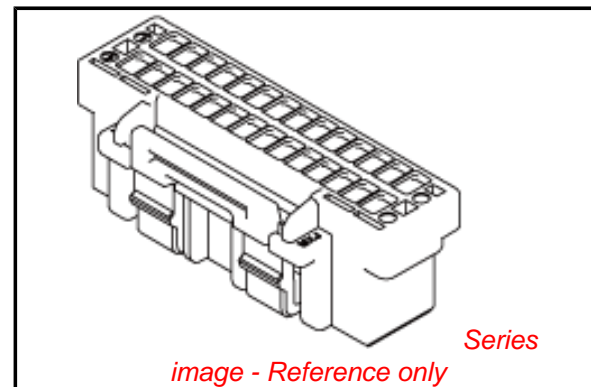
Electrical

Current - Maximum per Contact 2A

Material Info

Reference - Drawing Numbers

Application Specification AS-503149-001
Packaging Specification SPK-503149-001
Product Specification PS-503148-001, PS-503154-001, RPS-503148-001, RPS-503154-001, RPS-503154-002, RPS-503154-003, RPS-503154-004, RPS-503154-005, RPS-503154-006, RPS-503154-007
Sales Drawing SD-503149-001



EU RoHS

ELV and RoHS Compliant
REACH SVHC Contains SVHC: No
Halogen-Free Status

China RoHS



Need more information on product environmental compliance?

Email productcompliance@molex.com
For a multiple part number RoHS Certificate of Compliance, [click here](#)

Please visit the [Contact Us](#) section for any non-product compliance questions.

Search Parts in this Series

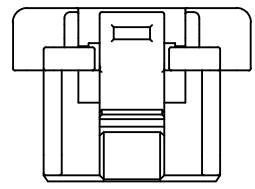
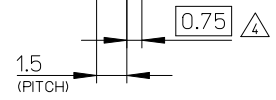
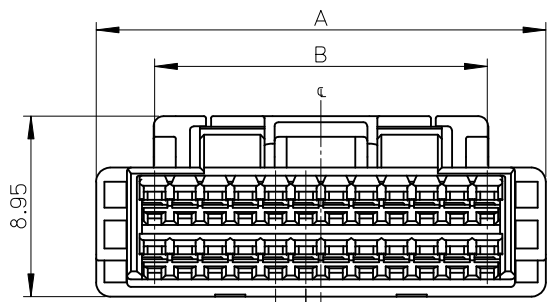
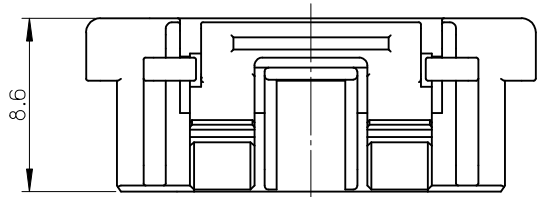
503149Series

Mates With

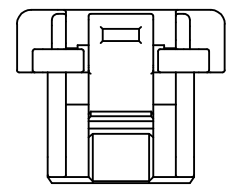
503154 PCB Receptacle

Use With

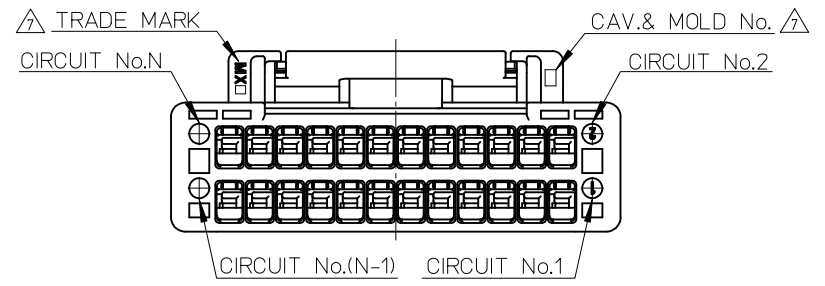
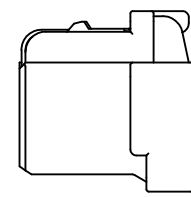
502579 Crimp Terminal



10CKTのロック形状
FIGURE OF 10 CIRCUIT



8CKTのロック形状
FIGURE OF 8 CIRCUIT



22.5	28.3	503149 - 320*	32
21.0	26.8	503149 - 300*	30
19.5	25.3	503149 - 280*	28
16.5	22.3	503149 - 240*	24
15.0	20.8	503149 - 220*	22
13.5	19.3	503149 - 200*	20
10.5	16.3	503149 - 160*	16
7.5	13.3	503149 - 120*	12
6.0	11.8	503149 - 100*	10
4.5	10.3	503149 - 080*	8
B	A	MATERIAL AND ORDER No. Δ	CIRCUIT No.

REVISED EC NO: J2010-2056 DRWN: YGOTO 2010/02/04 CHKD: KASAKAWA 2010/04/16 APPR: NUKITA 2010/04/17	GENERAL TOLERANCES (UNLESS SPECIFIED)		DIMENSION STYLE	SCALE	DESIGN UNITS	THIRD ANGLE PROJECTION
			MM ONLY	4:1	METRIC	
	10 UNDER	± 0.2	DRAWN BY	DATE	TITLE	
	10 OVER 30 UNDER	± 0.25	T. HANYU	2008/1/8	1.5 W/B CONN. DUAL PLUG HOUSING	
30 OVER	± 0.3	CHECKED BY	DATE	MATERIAL NO.		
		K. ASAKAWA	2008/1/8	DOCUMENT NO.		
		APPROVED BY	DATE	SHEET NO.		
		Y.O. ITO	2008/1/8	1 OF 2		
		ANGULAR	$\pm 1^\circ$	SEE CHART		
		DRAFT WHERE APPLICABLE MUST REMAIN WITHIN DIMENSIONS		MOLEX INCORPORATED		
				SD-503149-001		
				THIS DRAWING CONTAINS INFORMATION THAT IS PROPRIETARY TO MOLEX INCORPORATED AND SHOULD NOT BE USED WITHOUT WRITTEN PERMISSION		

NOTES

1. 材料 PBT UL94V-0
MATERIAL
 2. 嵌合相手: 503148, 503154 シリーズ
MATE WITH: 503148, 503154 SERIES
 3. 適合ターミナル: 502579, 503429 シリーズ
APPLICABLE TERMINAL: 502579, 503429 SERIES
- △ 極数/2=偶数極の場合に適用
APPLY FOR (CIRCUIT/2=EVEN)

△ 製品番号
MATERIAL No.

503149 - **0*

↑ 極数 ↑ 色
CIRCUIT SIZE COLOR

COLOR	黒 BLACK	赤 RED	青 BLUE	緑 GREEN	ベージュ BEIGE (NATURAL)
COLOR No.	1	2	4	6	0

6. 本製品のプラスチック部に黒点・白点等が確認される場合や色合いが異なる場合がありますが、製品性能に問題はありません。
THERE IS NO INFLUENCE IN THE PRODUCT PERFORMANCE THOUGH THE BLACK AND WHITE SPOT ETC. MIGHT BE CONFIRMED TO THE PLASTIC PART OF THIS PRODUCT AND THE SADE MIGHT BE DIFFERENT.
- △ トレードマーク: MXプラス1文字の製造工場を示すアルファベットにて表示
但し"J"はJAPANを示す。(例: MXJ)
キャビティ番号: 1桁から2桁の数字にて表示
金型番号: アルファベット1文字にて表示
FORMED BY MA AND 1 MORE LETTER OF ALPHABET WHICH MEAN THE MANUFACTORY. BUT "J" MEANS JAPAN. (TO TRADE MARK) (e.g. MXJ)
AND BY 1 - 2 DIGIT NUMBER (TO CAVITY No.)
AND BY 1 LETTER OF ALPHABET (TO MOLD No.)
8. アプリケーション仕様書 (コネクタ取扱説明書): AS-503149-001
APPLICATION SPECIFICATIONS (CONNECTOR MANUAL): AS-503149-001
 9. 製品仕様書: PS-503148-001 / PS-503154-001
PRODUCT SPECIFICATION: PS-503148-001 / PS-503154-001
 10. ELV及びRoHS適合品
ELV AND RoHS COMPLIANT

REVISED EC NO: J2010-2056 2010/02/04 DRWN: YGOTO 2010/04/16 CHKD: KASAKAWA 2010/04/17 APPR: NUKITA	GENERAL TOLERANCES (UNLESS SPECIFIED)	DIMENSION STYLE MM ONLY	SCALE 1:1	DESIGN UNITS METRIC	THIRD ANGLE PROJECTION
	10 UNDER ±0.2	DRAWN BY T. HANYU	DATE 2008/1/8	TITLE 1.5 W/B CONN. DUAL PLUG HOUSING	
	10 OVER 30 UNDER ±0.25	CHECKED BY K. ASAKAWA	DATE 2008/1/8	MOLEX INCORPORATED	
	30 OVER ±0.3	APPROVED BY YU. ITO	DATE 2008/1/8	MATERIAL NO. SEE CHART	DOCUMENT NO. SD-503149-001
ANGULAR ±1 ° DRAFT WHERE APPLICABLE MUST REMAIN WITHIN DIMENSIONS	SIZE A3	THIS DRAWING CONTAINS INFORMATION THAT IS PROPRIETARY TO MOLEX INCORPORATED AND SHOULD NOT BE USED WITHOUT WRITTEN PERMISSION			