

PLEASE CHECK WWW.MOLEX.COM FOR LATEST PART INFORMATION

Part Number: [0008520132](#)
Status: **Active**
Overview: [kk](#)
Description: KK® Crimp Terminal 8818, 18-22 AWG, Bag, Phosphor Bronze Tin (Sn)

Documents:

[Drawing \(PDF\)](#) [RoHS Certificate of Compliance \(PDF\)](#)
[Product Specification PS-08-50 \(PDF\)](#)

General

Product Family	Crimp Terminals
Series	8818
Crimp Quality Equipment	Yes
Overview	kk
Product Name	KK®

Physical

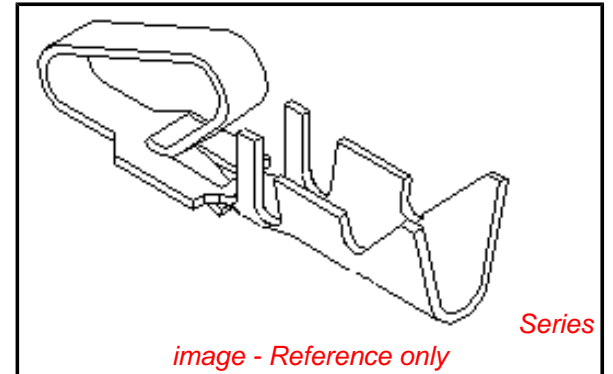
Gender	Female
Material - Metal	Phosphor Bronze
Material - Plating Mating	Tin
Material - Plating Termination	Tin
Packaging Type	Bag
Plating min: Mating (µin)	100
Plating min: Mating (µm)	2.50
Plating min: Termination (µin)	100
Plating min: Termination (µm)	2.50
Termination Interface: Style	Crimp or Compression
Wire Insulation Diameter	2.41mm (.095") max.
Wire Size AWG	18, 20, 22
Wire Size mm²	N/A

Material Info

Old Part Number	8818-A(P909)L
-----------------	---------------

Reference - Drawing Numbers

Packaging Specification	PK-2759-001
Product Specification	PS-08-50
Sales Drawing	SD-8818



EU RoHS

**ELV and RoHS
Compliant**

REACH SVHC

Contains SVHC: No

Halogen-Free

Status

Halogen-Free

**Need more information on product
environmental compliance?**

Email productcompliance@molex.com
 For a multiple part number RoHS Certificate of
 Compliance, [click here](#)

Please visit the [Contact Us](#) section for any
 non-product compliance questions.

China RoHS



Search Parts in this Series

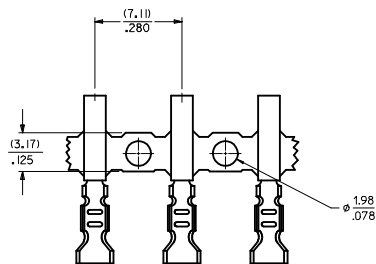
[8818Series](#)

Application Tooling | [FAQ](#)

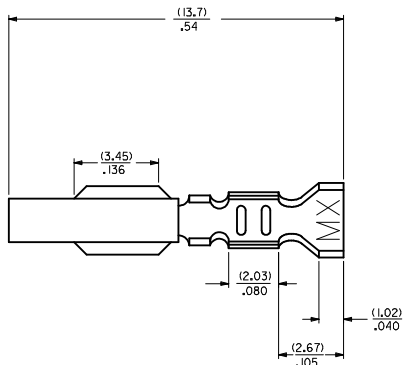
*Tooling specifications and manuals are
 found by selecting the products below.
 Crimp Height Specifications are then
 contained in the Application Tooling
 Specification document.*

Global

Description	Product #
Hand Crimper	0638117500



CHAIN FORM
SCALE 5:1



LEGEND

88 IB ** *(*) *

MATERIAL
(.27)/.0106 THK.
BLANK= BRASS
A= PHOS BRONZE

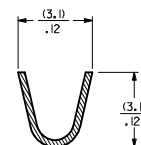
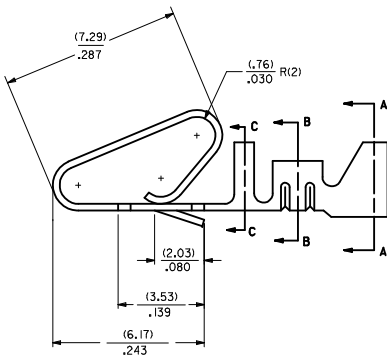
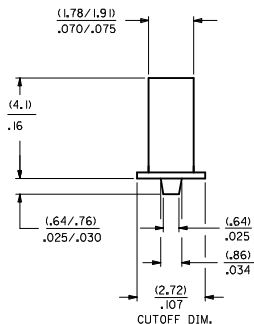
WINDING SPEC
BLANK= PER ES-339-B
L=LOOSE

PLATING
SEE NOTE 2

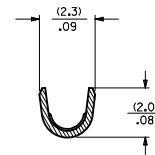
OPTION CODE
BLANK=AS SHOWN

EDP NO.	ENGINEERING NO.
08-56-0187	88 IB-(50 I)
08-56-0188	88 IB-(50 IIL)
	88 IB-(555)
	88 IB-(555)IL
08-50-0008	88 IB-(P909)
08-50-0023	88 IB-(P909)IL
40-01-1181	88 IB-(999)
40-01-1182	88 IB-A(999)
08-50-0705	88 IB-A(102)
08-50-0706	88 IB-A(102)IL
08-65-0128	88 IB-A(555)
08-65-0129	88 IB-A(555)IL
08-52-0131	88 IB-A(P909)
08-52-0132	88 IB-A(P909)IL
08-58-0135	88 IB-A(550)
08-58-0136	88 IB-A(550)IL

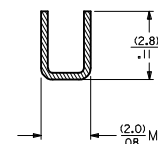
- NOTES:
- MATERIAL: SEE LEGEND
 - FINISH:
 - (P909) OVERALL HOT TIN DIP: (0.00254)/.000100 MIN.
 - (550) SELECT GOLD: (0.000381)/.000015 MIN.
 - OVERALL GOLD FLASH: (0.000051)/.000002 MIN.
 - OVERALL NICKEL UNDERPLATE: (0.000761)/.000030 MIN.
 - (555) SELECT GOLD: (0.000381)/.000015 MIN.
 - OVERALL NICKEL UNDERPLATE: (0.000761)/.000030 MIN.
 - PRODUCT SPECIFICATION: PS-08-50
 - PACKAGING SPECIFICATION: NONE
 - CRIMP ACCEPTS 18-22 GA. WIRE WITH (2.79)/.110 MAX. INSULATION DIA.
 - DIMENSIONS GIVEN ACROSS CENTERLINES ARE SYMMETRICAL ABOUT THOSE CENTERLINES WITHIN HALF THE TOTAL TOLERANCE.
 - TERMINAL FOR USE IN 41695 AND 6345 HOUSINGS.
 - THIS PART CONFORMS TO CLASS B REQUIREMENTS OF COSMETIC SPECIFICATION PS-45499-002.



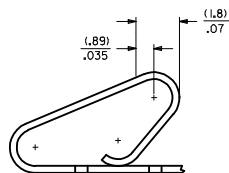
SECTION A-A



SECTION B-B



SECTION C-C



POST-PLATED SELECT GOLD LOCATION

ADD CHAIN VIEW IEC NO: UCP2009-2843 DRAWN BY: DRWNK/PPER 2009/05/27 CHKD:SSOUSEK 2009/05/28 APPR:FSM/TH 2009/05/28	QUALITY SYMBOLS	GENERAL TOLERANCES (UNLESS SPECIFIED)	DIMENSION STYLE	SCALE	DESIGN UNITS	THIRD ANGLE PROJECTION	
	▽=0 ▽=0	mm INCH 4 PLACES ± --- ± --- 3 PLACES ± .010 ± .010 2 PLACES ± 0.25 ± .014 1 PLACE ± 0.36 ± --- ANGULAR ±1/2°	MM/IN	---	INCH	DRAWN BY: JJS DATE: 02/02/193 CHECKED BY: PATEL DATE: 02/02/193 APPROVED BY: ENZ DATE: 02/02/193	TITLE: CRIMP STYLE KK TYPE, .156 CENTERS W/ANTIFISHOOKING FEATURE MOLEX INCORPORATED
	DRAFT WHERE APPLICABLE MUST REMAIN WITHIN DIMENSIONS	MATERIAL NO. SEE CHART	DOCUMENT NO. SD-8818	SHEET NO. 1 OF 1			
	THIS DRAWING CONTAINS INFORMATION THAT IS PROPRIETARY TO MOLEX INCORPORATED AND SHOULD NOT BE USED WITHOUT WRITTEN PERMISSION						