

PLEASE CHECK WWW.MOLEX.COM FOR LATEST PART INFORMATION

Part Number: [0475920001](#)
Status: **Active**
Overview: [battery connectors](#)
Description: 2.00mm (.079") Pitch L-Cap Battery Connector, SMT, 4 Circuits, LCP Housing, Lead-free

Documents:

[Drawing \(PDF\)](#) [RoHS Certificate of Compliance \(PDF\)](#)
[Product Specification PS-47592-001 \(PDF\)](#)

General

Product Family	PCB Headers
Series	47592
Application	Board-to-Board
Overview	battery connectors
Product Name	Battery Connector, Compression Connector

Physical

Breakaway	No
Circuits (Loaded)	4
Circuits (maximum)	4
Color - Resin	Ivory
Durability (mating cycles max)	10,000
First Mate / Last Break	No
Glow-Wire Compliant	No
Guide to Mating Part	No
Keying to Mating Part	None
Lock to Mating Part	None
Material - Metal	Copper Alloy
Material - Plating Mating	Gold
Material - Plating Termination	Nickel
Material - Resin	High Temperature Thermoplastic
Number of Rows	1
Orientation	Right Angle
PCB Locator	No
PCB Retention	None
Packaging Type	Tray
Pitch - Mating Interface (in)	0.079 In
Pitch - Mating Interface (mm)	2.00 mm
Pitch - Term. Interface (in)	0.079 In
Pitch - Term. Interface (mm)	2.00 mm
Plating min: Mating (µin)	30
Plating min: Mating (µm)	0.76
Polarized to Mating Part	No
Polarized to PCB	No
Shrouded	No
Stackable	No
Temperature Range - Operating	-40°C to +85°C
Termination Interface: Style	Surface Mount

Electrical

Current - Maximum per Contact	1.5A
Voltage - Maximum	200V (RMS)

Material Info

Reference - Drawing Numbers

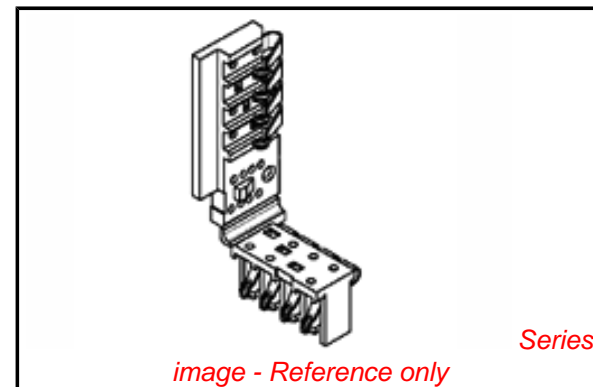


image - Reference only

EU RoHS

ELV and RoHS Compliant
REACH SVHC
 Not Reviewed
Halogen-Free Status

China RoHS



Need more information on product environmental compliance?

Email productcompliance@molex.com
 For a multiple part number RoHS Certificate of Compliance, [click here](#)

Please visit the [Contact Us](#) section for any non-product compliance questions.

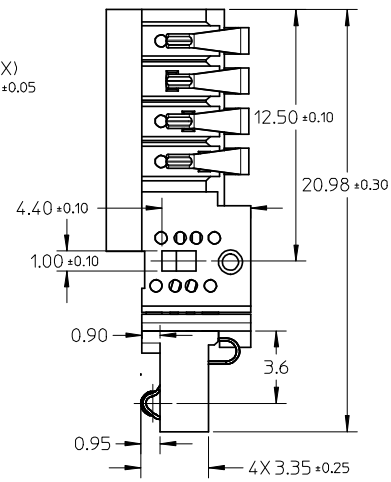
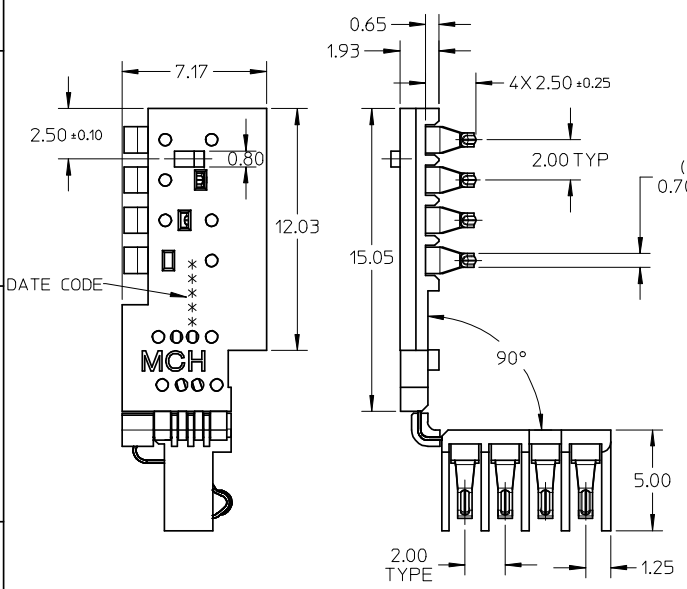
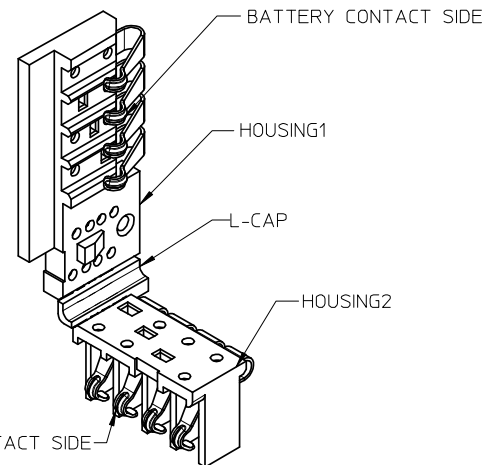
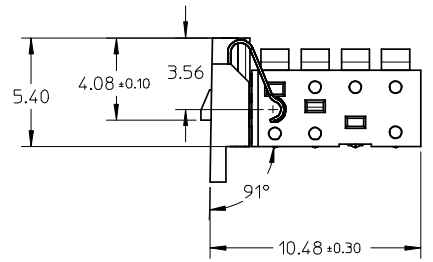
Search Parts in this Series
[47592Series](#)

Packaging Specification
Product Specification
Sales Drawing

PK-47592-001
PS-47592-001
SD-47592-001

This document was generated on 05/26/2010

PLEASE CHECK WWW.MOLEX.COM FOR LATEST PART INFORMATION



PCB CONTACT SIDE

- NOTE:
- MATERIAL:
 - HOUSING1&2: LCP, UL 94V-0, COLOR IS IVORY WHITE
 - L-CAP: LCP, UL 94V-0, COLOR IS IVORY WHITE
 - TERMINAL: COPPER ALLOY C17200 TM06, 0.15 mm
 - FINISH:
 - CONTACT AREA: 30 MICRO INCHES MIN GOLD PLATING OVER 50 MICRO INCHES MIN NICKEL
 - RECOMMENED WORKING RANGE AND FORCE:
 - BATTERY SIDE: 0.95mm/100±30g, 1.25mm/190gMAX
 - PCB SIDE: 0.80mm/70±30g, 0.95mm/130gMAX
 - PRODUCT SPECIFICATION: PS-47592-001
 - DATE CODE: * * * * (5 DIGITS)
 - DAY
 - MONTH
 - YEAR

NEW PRODUCT EC NO: SH2008-0357 DRWN: JYANG13 2008/01/11 CHKD: YLZHU APPR: HWANG 2008/01/30	QUALITY SYMBOLS ▽=0 ▽=0	GENERAL TOLERANCES (UNLESS SPECIFIED)		DIMENSION STYLE		SCALE	DESIGN UNITS	THIRD ANGLE PROJECTION		
				MM ONLY		4:1	METRIC			
		4 PLACES	± ---	± ---	DRAWN BY	DATE	TITLE			
		3 PLACES	± ---	± ---	JYANG13	2008/01/08	SD DRAWING 4PIN COMPRESSION BATTERY CONNECTOR			
2 PLACES	± 0.2	± ---	CHECKED BY	DATE	MOLEX INCORPORATED					
1 PLACE	± 0.3	± ---	APPROVED BY	DATE					MATERIAL NO. 475920001 DOCUMENT NO. SD-47592-001 SHEET NO. 1 OF 1	
ANGULAR ± 3 °			HWANG	2008/01/08						
DRAFT WHERE APPLICABLE MUST REMAIN WITHIN DIMENSIONS			SIZE A3		THIS DRAWING CONTAINS INFORMATION THAT IS PROPRIETARY TO MOLEX INCORPORATED AND SHOULD NOT BE USED WITHOUT WRITTEN PERMISSION					