

**PLEASE CHECK WWW.MOLEX.COM FOR LATEST PART INFORMATION**

**Part Number:** [0008560109](#)  
**Status:** **Active**  
**Overview:** [kk](#)  
**Description:** KK® Crimp Terminal, 22-30 AWG, Gold (Au), Nickel (Ni) Under Plating

**Documents:**

[Drawing \(PDF\)](#) [RoHS Certificate of Compliance \(PDF\)](#)  
[Product Specification PS-10-07 \(PDF\)](#)

**General**

Product Family Crimp Terminals  
 Series [2759](#)  
 Crimp Quality Equipment Yes  
 Overview [kk](#)  
 Product Name KK®

**Physical**

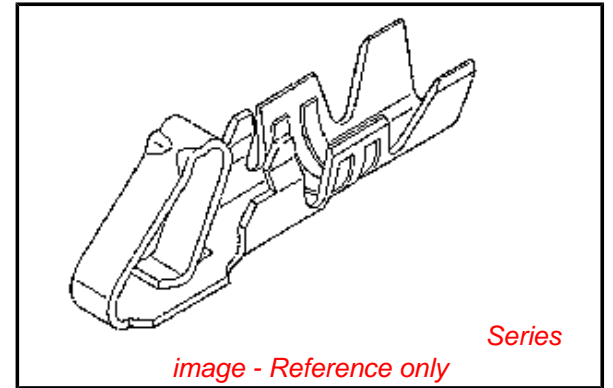
Gender Female  
 Material - Metal Brass  
 Material - Plating Mating Gold  
 Material - Plating Termination Gold  
 Packaging Type Reel  
 Plating min: Mating (µin) 15  
 Plating min: Mating (µm) 0.375  
 Plating min: Termination (µin) 2  
 Plating min: Termination (µm) 0.05  
 Termination Interface: Style Crimp or Compression  
 Wire Insulation Diameter 1.57mm (.062") max.  
 Wire Size AWG 22, 24, 26, 28, 30  
 Wire Size mm² N/A

**Material Info**

Old Part Number 2759-(550)B

**Reference - Drawing Numbers**

Product Specification PS-10-07  
 Sales Drawing SD-2759



**EU RoHS**

**ELV and RoHS  
 Compliant**  
**REACH SVHC  
 Contains SVHC: No**  
**Halogen-Free  
 Status**

**China RoHS**



**Need more information on product  
 environmental compliance?**

Email [productcompliance@molex.com](mailto:productcompliance@molex.com)  
 For a multiple part number RoHS Certificate of  
 Compliance, [click here](#)

Please visit the [Contact Us](#) section for any  
 non-product compliance questions.

**Search Parts in this Series**

[2759Series](#)

**Use With**

2695 , 5051 , 6745 , 41895

**Application Tooling | FAQ**

*Tooling specifications and manuals are  
 found by selecting the products below.  
 Crimp Height Specifications are then  
 contained in the Application Tooling  
 Specification document.*

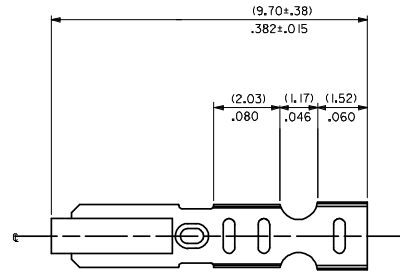
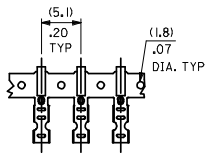
**Global**

Description	Product #
Mini-Mac™ Applicator, Use with Small Wire Insulation Diameter	<a href="#">0638882100</a>
Mini-Mac™ Applicator, Use with Large Wire Insulation Diameter	<a href="#">0638882000</a>
Extraction Tool	<a href="#">0011030022</a>
Terminator Die	<a href="#">0011402265</a>

This document was generated on 05/17/2010

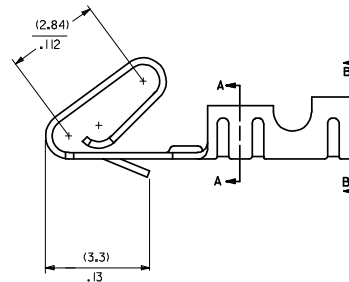
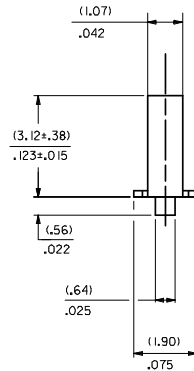
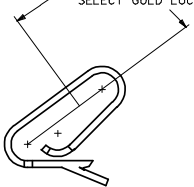
**PLEASE CHECK [WWW.MOLEX.COM](http://WWW.MOLEX.COM) FOR LATEST PART INFORMATION**

CARRIER VIEW

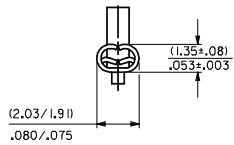


- NOTES
- MATERIAL  
(0.203±0.010)/.0080±.0004 THICK BRASS
  - FINISH
    - 102 - OVERALL TIN: (0.00508)/.000200 MIN. TIN OVER (0.00254)/.000100 MIN. COPPER
    - 122 - OVERALL TIN: (0.00381)/.000150 MIN. TIN OVER (0.00076)/.000030 MIN. NICKEL
    - W909 - OVERALL HOT TIN DIP: (0.00254)/.000100 MIN.
    - 550 - SELECT GOLD (0.00038)/.000015 MIN. OVERALL GOLD FLASH: (0.00005)/.000002 MIN. OVERALL NICKEL UNDERPLATE: (0.00076)/.000030 MIN.
    - 555- SELECT GOLD (0.00038)/.000015 MIN. OVERALL NICKEL UNDERPLATE: (0.00076)/.000030
    - 558 - SELECT GOLD: (0.00076)/.000030 MIN. OVERALL GOLD FLASH: (0.00005)/.000002 MIN. OVERALL NICKEL UNDERPLATE: (0.00127)/.000050 MIN.
  - PRODUCT SPEC: PS-10-07
  - PACKAGING SPECIFICATION: NONE
  - CRIMP IS FOR 22-30 GA WIRE WITH (1.57)/.062 DIA INSULATION MAX.
  - INSERTION FORCE OF TERMINAL INTO (2.54)/.100 CENTERLINE CONNECTOR IS 2.5 LBS. MAX
  - TERMINALS WILL RETAIN 8 LBS PULL FOR 1 MIN. IN A (2.54)/.100 CENTERLINE HOUSING.
  - DIMENSIONS GIVEN ACROSS CENTERLINES ARE SYMMETRICAL ABOUT THOSE CENTERLINES WITHIN HALF THE TOTAL TOLERANCE.
  - CODE LETTER PRECEDING PART NO. DESIGNATES MANUFACTURING LOCATION.  
I=IRELAND
  - THIS PART CONFORMS TO CLASS B REQUIREMENTS OF COSMETIC SPECIFICATION PS-45499-002.

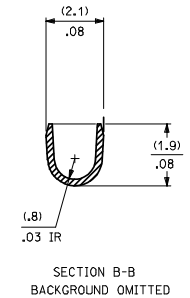
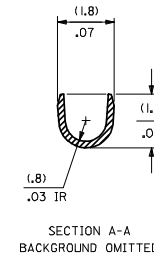
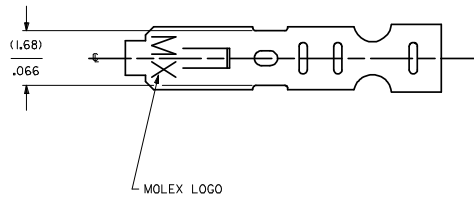
SELECT GOLD LOCATION



CRIMP DETAIL



CRIMPED TERMINAL 2759-IP90)LC IS USED WITHOUT WIRE AND IS INSERTED INTO HOUSING TO PROVIDE TENSION WHEN ASSEMBLED TO HEADERS DURING SHIPMENT.



- 2759-(\*\*\*))
- FORM
  - L=LOOSE
  - C=LOOSE CRIMPED
  - A=CHAIN PER ES-339-A
  - B=CHAIN PER ES-339-B
- PLATING  
SEE NOTE 2

SH REV 1 AS3 2 AS4	UPDATE DIMS DEC NO: UCP/2008-2190 2008/03/17 DRW: DRW: NADERR 2008/03/18 CHK: KOL: SCHMIDT 2008/03/18 APPR: F: SMITH 2008/03/24	QUALITY SYMBOLS =0 =0	GENERAL TOLERANCES (UNLESS SPECIFIED): mm INCH		DIMENSION STYLE MM/IN		SCALE ---	DESIGN UNITS INCH	THIRD ANGLE PROJECTION
			4 PLACES ± --- ± --- 3 PLACES ± --- ± .010 2 PLACES ± 0.25 ± .014 1 PLACE ± 0.36 ± --- ANGULAR ± 1/2°	DRAWN BY: SAMIEC DATE: 07/28/87 CHECKED BY: DATE: 07/28/87 APPROVED BY: LENZ DATE: 07/28/87	TITLE CRIMP TERMINAL 22-30 GA WIRE		MATERIAL NO. SEE CHART DOCUMENT NO. SD-2759		MOLEX INCORPORATED
DRAFT WHERE APPLICABLE MUST REMAIN WITHIN DIMENSIONS			THIS DRAWING CONTAINS INFORMATION THAT IS PROPRIETARY TO MOLEX INCORPORATED AND SHOULD NOT BE USED WITHOUT WRITTEN PERMISSION						

2759-\*\*\*)\*

PART NO.	ENG. NO.	PART NO.	ENG. NO.	PART NO.	ENG. NO.	PART NO.	ENG. NO.
08-55-0101	2759-(555)B						
08-55-0102	2759-(555)L						
08-55-0126	2759-(555)A						
08-56-0109	2759-(550)B						
08-56-0110	2759-(550)L						
08-50-0113	2759-(P909)B						
08-50-0114	2759-(P909)L						
08-50-0124	2759-(P909)C						
08-51-0108	2759-(122)B						
	2759-(122)L						
I 08-50-0274	2759-(P909)B						
I 08-50-0275	2759-(P909)L						
I 08-50-0273	2759-(P909)A						
08-55-0130	2759-(558)B						
08-55-0131	2759-(558)L						
08-50-0160	2759-(102)L						
08-50-0159	2759-(102)						

REMOVE *999 PARTS EC NO: UCP2008-0722 DRAWN BY: 2007/08/02 CHKD: JRELL 2007/08/02 APPROVAL: JH 2007/08/03 AS4 REV DESCRIPTION	QUALITY SYMBOLS	GENERAL TOLERANCES (UNLESS SPECIFIED)	DIMENSION STYLE	SCALE	DESIGN UNITS	THIRD ANGLE PROJECTION	
	▽=0 ▽=0	mm INCH 4 PLACES ± --- ± --- 3 PLACES ± --- ± --- 2 PLACES ± --- ± --- 1 PLACE ± --- ± --- ANGULAR ±1/2°	MM/IN	---	INCH	DRAWN BY: SAMIEC DATE: 07/28/87 CHECKED BY: DATE: 07/28/87 APPROVED BY: LENZ DATE: 07/28/87	TITLE: CRIMP TERMINAL 22-30 GA WIRE MOLEX MOLEX INCORPORATED
		DRAFT WHERE APPLICABLE MUST REMAIN WITHIN DIMENSIONS	SEE CHART	MATERIAL NO.	DOCUMENT NO.	SHEET NO.	
			SIZE D		SD-2759	2 OF 2	