

PLEASE CHECK WWW.MOLEX.COM FOR LATEST PART INFORMATION

Part Number: [0511151621](#)
Status: **Active - Custom**
Description: 4.00mm (.157") Pitch OBD-II Wire-to-Wire Receptacle Housing Panel Mount

Documents:

[3D Model](#) [Product Specification PS-68503-001 \(PDF\)](#)
[Drawing \(PDF\)](#) [RoHS Certificate of Compliance \(PDF\)](#)

General

Product Family Crimp Housings
 Series [51115](#)
 Product Name OBD-II

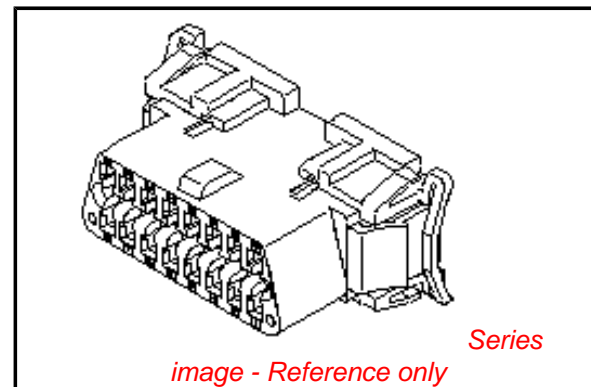
Physical

Circuits (maximum) 16
 Color - Resin Black
 Gender Receptacle
 Glow-Wire Compliant No
 Number of Rows 2
 Packaging Type Tray
 Panel Mount Yes
 Pitch - Mating Interface (in) 0.157 In
 Pitch - Mating Interface (mm) 4.00 mm
 Stackable No
 Temperature Range - Operating -10°C to +85°C

Material Info

Reference - Drawing Numbers

Packaging Specification [PK-51115-1621](#)
 Product Specification [PS-68503-001](#)
 Sales Drawing [SD-51115-1621](#)



EU RoHS

**ELV and RoHS
Compliant**
REACH SVHC
 Not Reviewed
**Halogen-Free
Status**

China RoHS



**Need more information on product
environmental compliance?**

Email productcompliance@molex.com
 For a multiple part number RoHS Certificate of
 Compliance, [click here](#)

Please visit the [Contact Us](#) section for any
 non-product compliance questions.

Search Parts in this Series

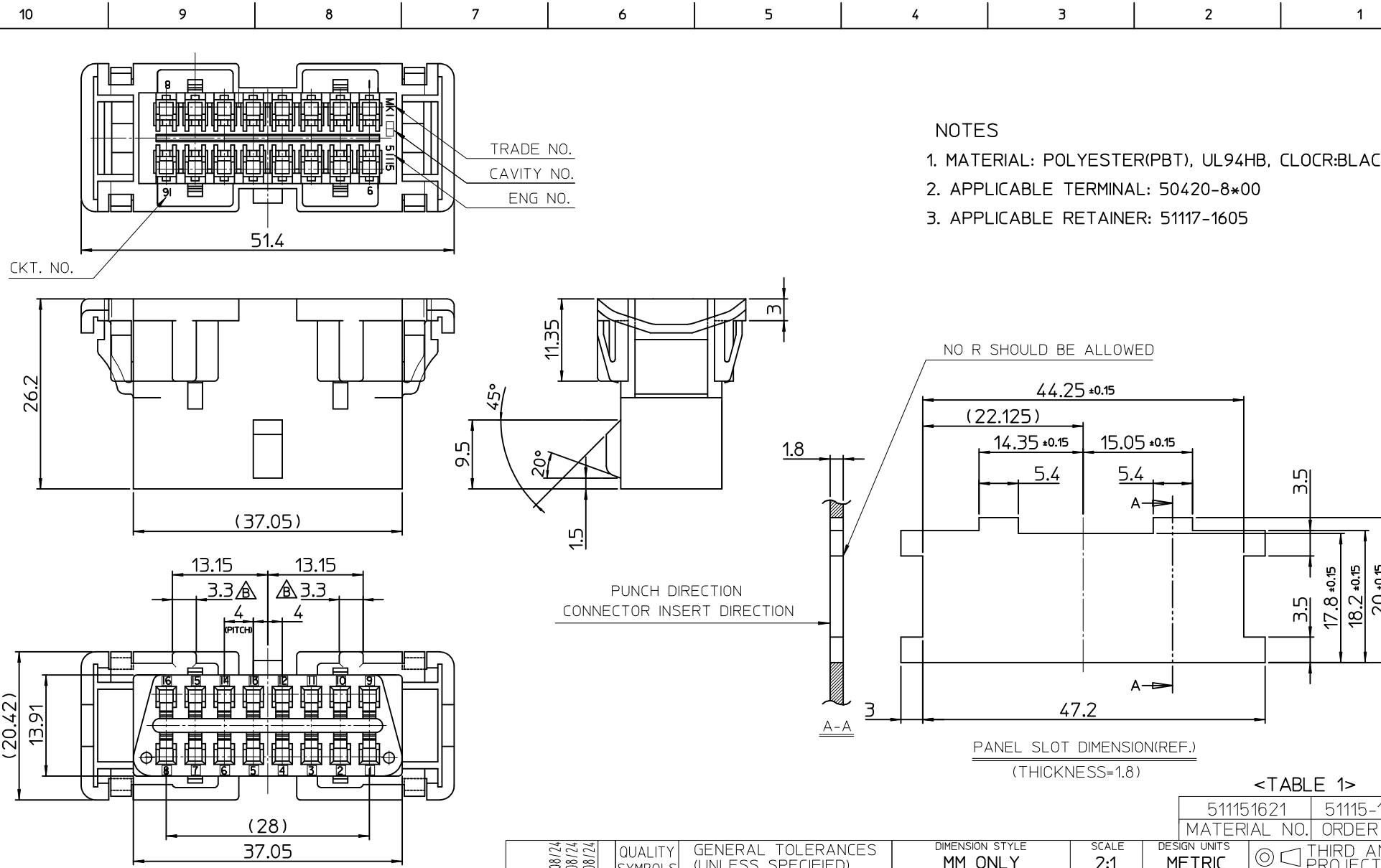
[51115Series](#)

Mates With

[68503](#) Housing, Wire Dress Cover and
 CPA . [57964](#) Terminal

Use With

[50420](#) Terminal . [51117](#) Retainer



- NOTES
1. MATERIAL: POLYESTER(PBT), UL94HB, CLOCR:BLACK
 2. APPLICABLE TERMINAL: 50420-8*00
 3. APPLICABLE RETAINER: 51117-1605

CKT. NO.

PUNCH DIRECTION
CONNECTOR INSERT DIRECTION

PANEL SLOT DIMENSION(REF.)
(THICKNESS=1.8)

<TABLE 1>

511151621	51115-1621
MATERIAL NO.	ORDER NO.

GENERAL TOLERANCE (UNLESS SPECIFIED)	
10 UNDER	±0.2
10 OVER 30 UNDER	±0.25
30 OVER	±0.3

REVISED	EC NO: KOR2010-0013
DRW: EOKIM	2009/08/24
CHKD: BCYUON	2009/08/24
APPR: YUNSTIKIM	2009/08/24
REV	DESCRIPTION

QUALITY SYMBOLS	GENERAL TOLERANCES (UNLESS SPECIFIED)
▽=0	
▽=0	
	mm INCH
4 PLACES	± --- ± ---
3 PLACES	± --- ± ---
2 PLACES	± --- ± ---
1 PLACE	± --- ± ---
	ANGULAR ± 3 °
	DRAFT WHERE APPLICABLE MUST REMAIN WITHIN DIMENSIONS

DIMENSION STYLE	SCALE	DESIGN UNITS
MM ONLY	2:1	METRIC
DRAWN BY	DATE	TITLE
AIDA	2003/06/30	4.0 W/W CONN. REC. HSG WITH MOUNTING EARS
CHECKED BY	DATE	
HTAKASE	2003/06/30	
APPROVED BY	DATE	
YDITO	2003/06/30	
MATERIAL NO.	DOCUMENT NO.	
SEE TABLE 1	SD-51115-1621	
SIZE	THIS DRAWING CONTAINS INFORMATION THAT IS PROPRIETARY TO MOLEX INCORPORATED AND SHOULD NOT BE USED WITHOUT WRITTEN PERMISSION	
A3		

THIRD ANGLE PROJECTION	
MOLEX INCORPORATED	
SHEET NO.	1 OF 1