



Data Sheet



Product Category: IF SAW Filter

Part Number	Package	Application	Last Modified
803-RF243.95M-A	3.8 x 3.8 SMD	PHS	Jan. 01 2007

TYPE :
PHS, RF SAW Filter



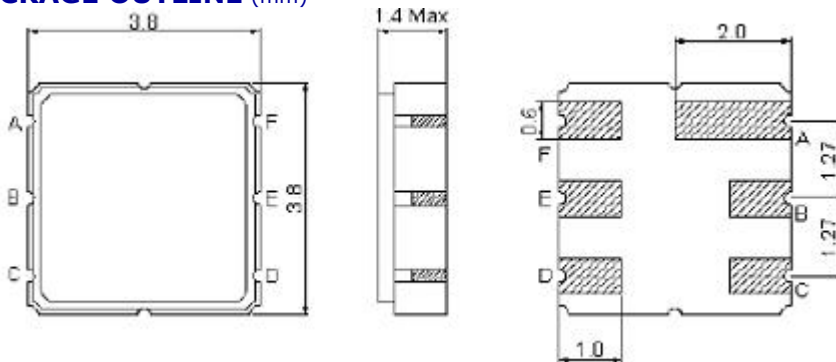
PART NUMBER :
803-RF243.95M-A

OPERATING CONDITIONS / ELECTRICAL CHARACTERISTICS

PARAMETERS		Minimum	Typical	Maximum	Units
Center Frequency (Fo)	-	-	243.95	-	MHz
Insertion Loss	-	-	3.0	4.0	dB
Relative Attenuation	Fo ± 600 MHz	25	30	-	dB
	Fo ± 10.7 MHz	50	65	-	
	Fo ± 21.4 MHz	60	65	-	
Source Impedance (single ended)*	-	-	50	-	ohm
Amplitude Ripple within Fo+/-100KHz	-	-	0.5	1.0	dB
Group Delay Ripple within Fo+/-100KHz	-	-	0.4	1.0	us
Load Impedance (single ended)*	-	-	50	-	ohm
Terminating Impedance	-	-	50	-	ohm
DC Voltage	-	-	-	0	V
Input Power	-	-	0	5	dBm
Operating Temperature	-	-10	-	+60	°C

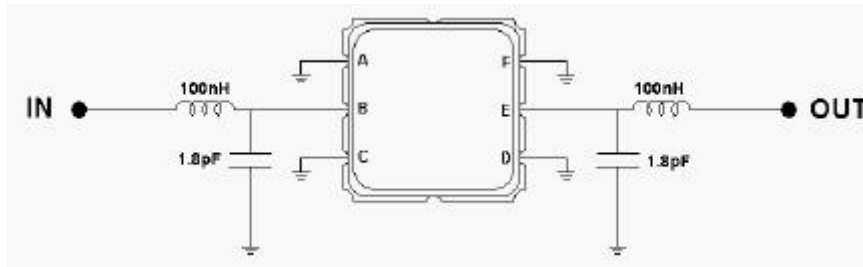
* With matching network (Ref. Testing Environment Circuit as shown below)

PACKAGE OUTLINE (mm)



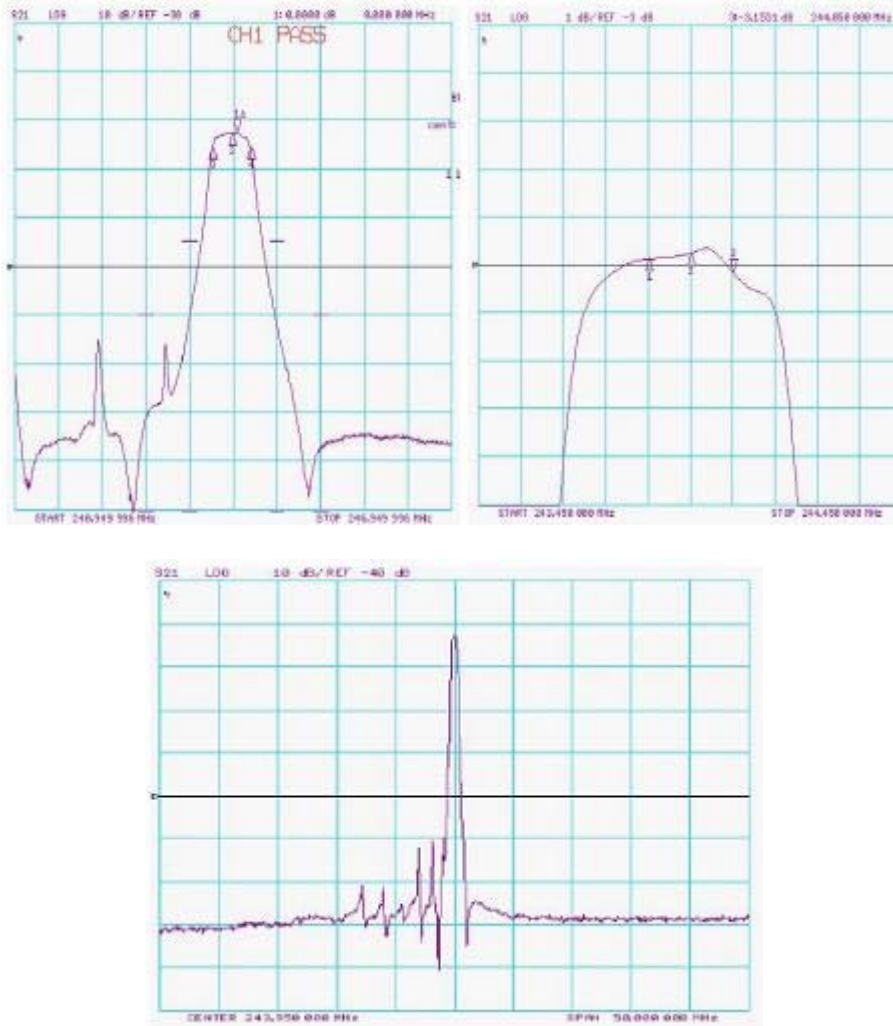
PIN LAYOUT	
A	Ground
B	In
C	Ground
D	Ground
E	Out
F	Ground

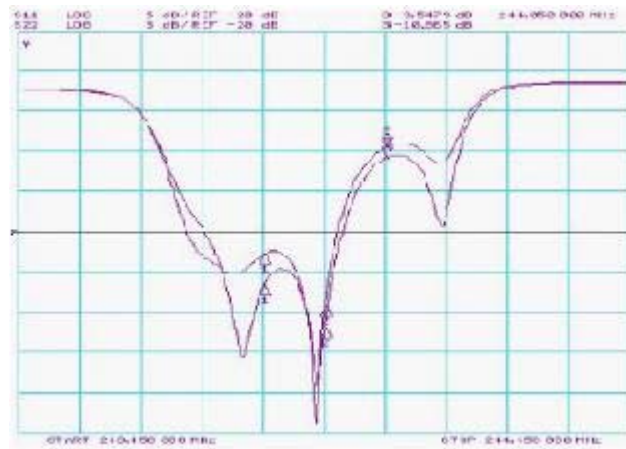
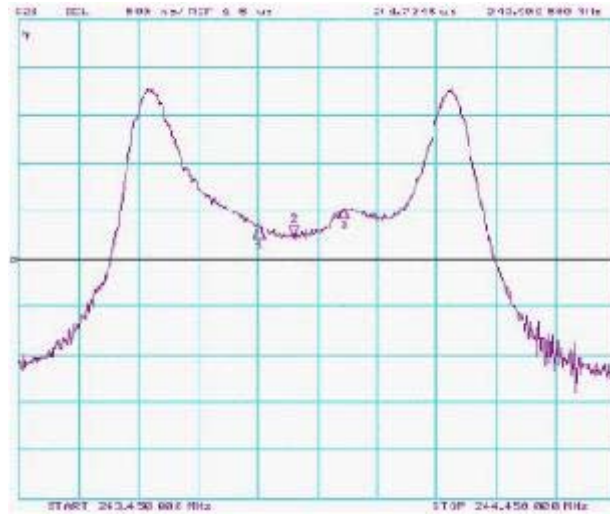
TEST FIXTURE



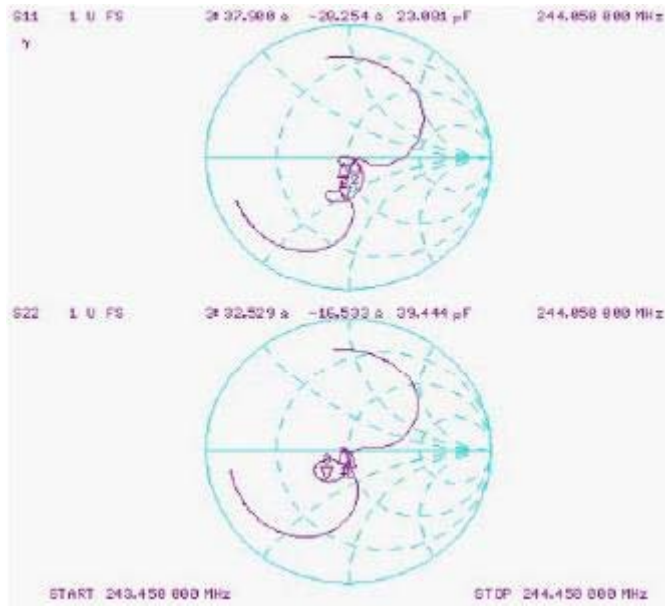
Source/Load Impedance = 50 ohms

FREQUENCY RESPONSE





SMITH CHART



[Crystal Oscillators](#) | [Quartz Crystal](#) | [TCXO](#) | [VCXO](#) | [IF SAW Filter](#) | [RF SAW Filter](#) | [Ceramic Resonator](#)
[Crystal Filter](#) | [Ceramic Filter](#) | [SAW Filter / SAW Devices](#) | [Site Map](#)