

**PLEASE CHECK WWW.MOLEX.COM FOR LATEST PART INFORMATION**

**Part Number:** [0050361747](#)  
**Status:** **Active**  
**Overview:** [minifit\\_jr](#)  
**Description:** 4.20mm (.165") Pitch Mini-Fit Jr.™ Header, Dual Row, Right Angle, with PCB Mounting Pegs, 5 Circuits, PA Polyamide Nylon 6/6, 94V-0, Bright Tin (Sn) over Nickel (Ni) Plating, Glow Wire Compatible

**Documents:**

[3D Model](#) [Product Specification PS-5556-001 \(PDF\)](#)  
[Drawing \(PDF\)](#) [RoHS Certificate of Compliance \(PDF\)](#)

**Agency Certification**

|     |           |
|-----|-----------|
| CSA | LR19980   |
| TUV | R72081037 |
| UL  | E29179    |

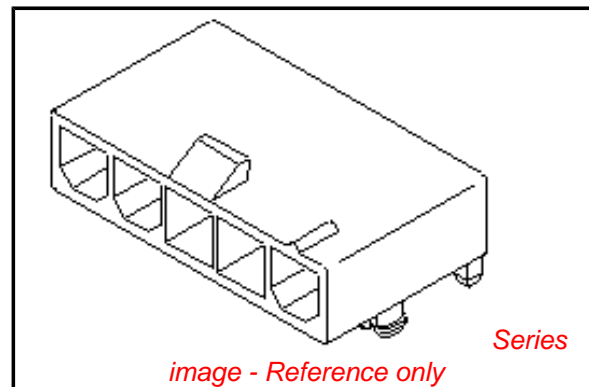
**General**

|                |  |
|----------------|--|
| Product Family | PCB Headers  |
| Series         | <a href="#">5569</a>   |
| Application    | Wire-to-Board  |
| Comments       | Current = 13A max. per circuit when header is mated to a receptacle loaded with <a href="#">45750</a> Mini-Fit Plus HCS™ Crimp Terminal Crimped to to 16 AWG wire. . See Molex Product specification PS-5556-001 for additional current de-rating information. |

Overview [minifit\\_jr](#)  
 Product Name Mini-Fit Jr.™

**Physical**

|                                |             |
|--------------------------------|-------------|
| Breakaway                      | No          |
| Circuits (Loaded)              | 5           |
| Circuits (maximum)             | 5           |
| Circuits Detail                | 5           |
| Color - Resin                  | Black       |
| Durability (mating cycles max) | 30          |
| First Mate / Last Break        | No          |
| Flammability                   | 94V-2       |
| Glow-Wire Compliant            | Yes         |
| Guide to Mating Part           | No          |
| Keying to Mating Part          | None        |
| Lock to Mating Part            | Yes         |
| Material - Metal               | Brass       |
| Material - Plating Mating      | Tin         |
| Material - Plating Termination | Nickel      |
| Material - Resin               | Nylon       |
| Number of Rows                 | 1           |
| Orientation                    | Right Angle |
| PC Tail Length (in)            | 0.142 In    |
| PC Tail Length (mm)            | 3.60 mm     |
| PCB Locator                    | Yes         |
| PCB Retention                  | Yes         |
| PCB Thickness Recommended (in) | 0.070 In    |
| PCB Thickness Recommended (mm) | 1.78 mm     |
| Packaging Type                 | Bag         |
| Pitch - Mating Interface (in)  | 0.165 In    |
| Pitch - Mating Interface (mm)  | 4.20 mm     |



**EU RoHS**

**ELV and RoHS Compliant**  
**REACH SVHC Contains SVHC: No**  
**Halogen-Free Status**  
**Not Reviewed**

**China RoHS**



**Need more information on product environmental compliance?**

Email [productcompliance@molex.com](mailto:productcompliance@molex.com)  
 For a multiple part number RoHS Certificate of Compliance, [click here](#)

Please visit the [Contact Us](#) section for any non-product compliance questions.

**Search Parts in this Series**

[5569Series](#)

**Mates With**

[5557](#) Mini-Fit Jr.™ Receptacle

|                                |                 |
|--------------------------------|-----------------|
| Pitch - Term. Interface (in)   | 0.165 In        |
| Pitch - Term. Interface (mm)   | 4.20 mm         |
| Polarized to Mating Part       | Yes             |
| Polarized to PCB               | Yes             |
| Shrouded                       | Fully           |
| Stackable                      | No              |
| Surface Mount Compatible (SMC) | No              |
| Temperature Range - Operating  | -40°C to +105°C |
| Termination Interface: Style   | Through Hole    |

### **Electrical**

|                               |      |
|-------------------------------|------|
| Current - Maximum per Contact | 13A  |
| Voltage - Maximum             | 600V |

### **Material Info**

|                 |                |
|-----------------|----------------|
| Old Part Number | 5569-05A4S-225 |
|-----------------|----------------|

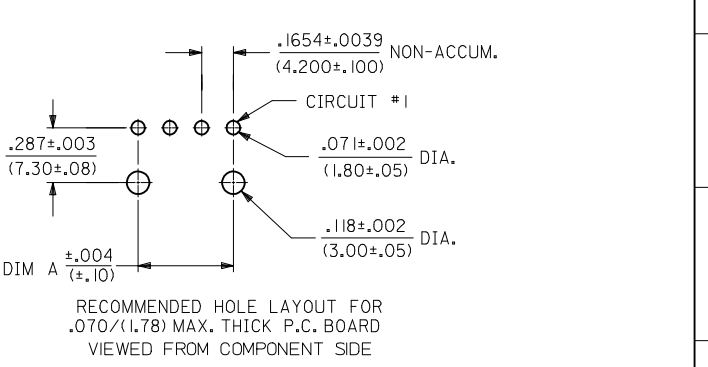
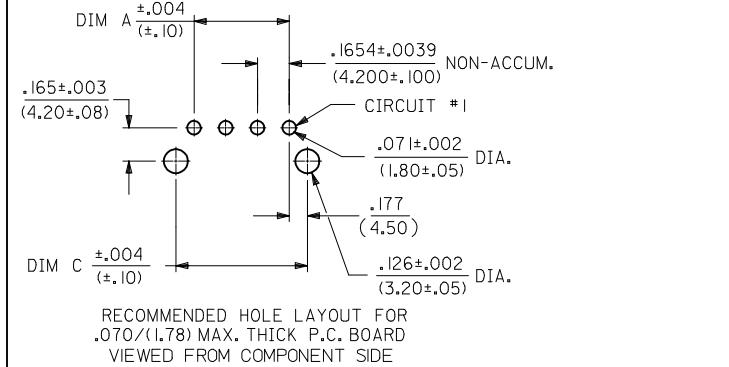
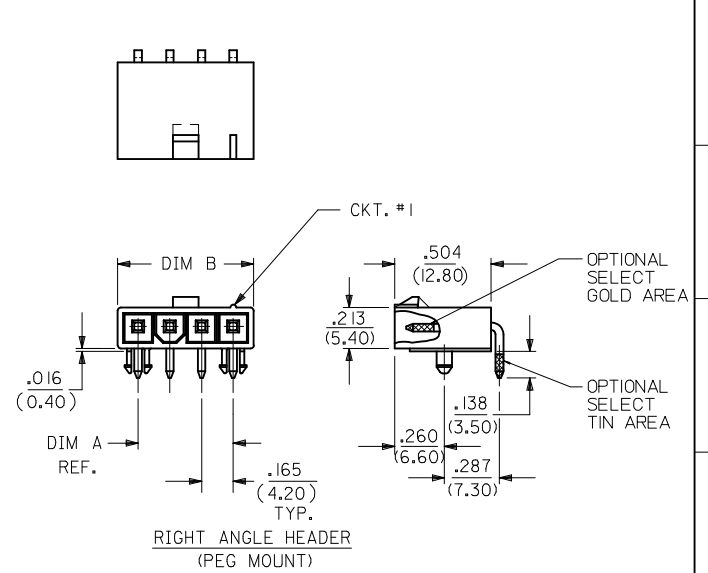
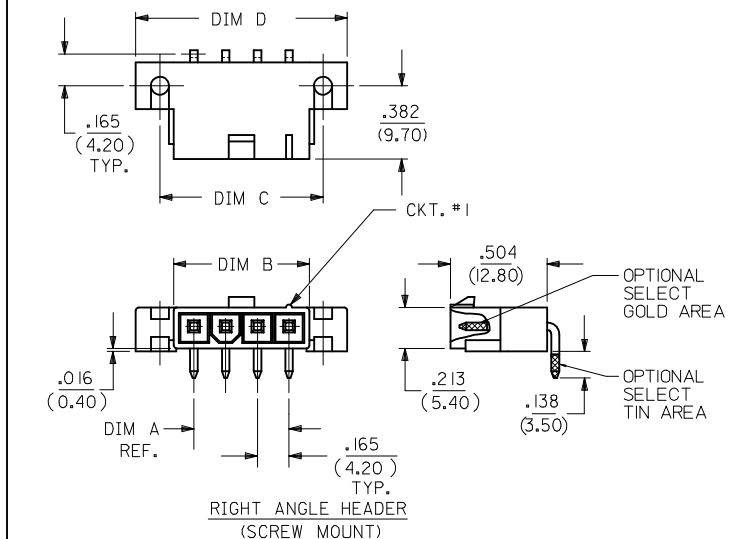
### **Reference - Drawing Numbers**

|                         |                 |
|-------------------------|-----------------|
| Packaging Specification | PK-5569-002     |
| Product Specification   | PS-5556-001     |
| Sales Drawing           | SD-5569-NL*-225 |
| Test Summary            | TS-5556-002     |

This document was generated on 05/21/2010

**PLEASE CHECK [WWW.MOLEX.COM](http://WWW.MOLEX.COM) FOR LATEST PART INFORMATION**

| CKT SIZE | DIM A            | DIM B            | DIM C            | DIM D            |
|----------|------------------|------------------|------------------|------------------|
| 4        | .496<br>(12.60)  | .709<br>(18.00)  | .850<br>(21.60)  | 1.102<br>(28.00) |
| 5        | .661<br>(16.80)  | .874<br>(22.20)  | 1.016<br>(25.80) | 1.268<br>(32.20) |
| 6        | .827<br>(21.00)  | 1.039<br>(26.40) | 1.181<br>(30.00) | 1.433<br>(36.40) |
| 7        | .992<br>(25.20)  | 1.205<br>(30.60) | 1.346<br>(34.20) | 1.598<br>(40.60) |
| 8        | 1.157<br>(29.40) | 1.370<br>(34.80) | 1.512<br>(38.40) | 1.764<br>(44.80) |
| 9        | 1.323<br>(33.60) | 1.535<br>(39.00) | 1.677<br>(42.60) | 1.929<br>(49.00) |
| 10       | 1.488<br>(37.80) | 1.701<br>(43.20) | 1.843<br>(46.80) | 2.094<br>(53.20) |
| 11       | 1.654<br>(42.00) | 1.866<br>(47.40) | 2.008<br>(51.00) | 2.260<br>(57.40) |
| 12       | 1.819<br>(46.20) | 2.031<br>(51.60) | 2.173<br>(55.20) | 2.425<br>(61.60) |



LEGEND:

5569 - \*\* A \* \* - \*

- CKT. SIZE (04-12)
- ASSEMBLY
- MOUNTING & LOCK OPTION:
  - 3 = SCREW MOUNT, POSITIVE LOCK
  - 4 = PEG MOUNT, POSITIVE LOCK
  - 5 = PEG MOUNT, PASSIVE LOCK
- PLATING OPTION: (SEE NOTE 2)
- MATERIAL OPTION: (SEE NOTE 1)

- NOTES:
- MATERIAL: HOUSING: \*225\* = UNFILLED NYLON 6, UL94V-0, IEC 60335-1, 4TH EDITION GLOW WIRE CAPABLE, COLOR - BLACK. TERMINAL: BRASS ALLOY
  - FINISH (PLATING): \*GS\* = .000030/(0.00076) MIN. SELECT GOLD OVER .000100/(0.00254) MIN. SELECT MATTE TIN OVER .000050/(0.00127) MIN. NICKEL OVERALL \*S\* = .000100/(0.00254) MIN. BRIGHT TIN OVER .000050/(0.00127) MIN. NICKEL
  - PRODUCT SPECIFICATION: PS-5556-001
  - PACKAGING SPECIFICATION: BULK PACKED PER PK-5569-002
  - PART MATES WITH MINI-FIT JR. RECEPTACLE SERIES 5557.
  - SCREW MOUNT PARTS ARE DESIGNED FOR USE WITH 4-40 OR M3 SCREWS. DISCOLORATION IN THE BANDOLIER CARRIER AREA OF THE PIN IS INHERENT TO THE PLATING PROCESS AND IS DUE TO THE MASKING EFFECT OF THE CARRIER. THIS DISCOLORATION IS IN A NON-FUNCTIONAL AREA OF THE PIN AND WILL NOT AFFECT THE PERFORMANCE OF THE HEADER ASSEMBLY.
  - CONNECTORS ARE NOT TO BE MATED AND UNMATED WHILE CIRCUITS ARE LIVE.
  - PARTS ARE NOT DESIGNED FOR CURRENT SHARING.
  - PART CONFORMS TO CLASS "B" REQUIREMENTS OF COSMETIC SPECIFICATION PS-45499-002.

| E.D.P. NO. | ENG. NO.       | CKT. SIZE | MOUNTING OPTION | LOCK OPTION | PLATING (SEE NOTE 2) | MAT'L (SEE NOTE 1) | TOOLED |
|------------|----------------|-----------|-----------------|-------------|----------------------|--------------------|--------|
| 50-36-1779 | 5569-04A4S-225 | 4         | PEGS            | POSITIVE    | TIN/NICKEL           | 94V-0              | YES    |
| 50-36-1747 | 5569-05A4S-225 | 5         | PEGS            | POSITIVE    | TIN/NICKEL           | 94V-0              | YES    |

|   |                               |
|---|-------------------------------|
| CHG TOOL STATUS<br>EC NO: UCP2010-0014<br>2009/09/04<br>DRWN:JBELL<br>2009/09/15<br>CHKD:JBELL<br>2009/09/15<br>APPR:FSMITH | QUALITY SYMBOLS<br>▽=0<br>▽=0 |
|---|-------------------------------|

GENERAL TOLERANCES (UNLESS SPECIFIED)

|            | mm  | INCH  |
|------------|-----|-------|
| 4 PLACES ± | --- | ±---  |
| 3 PLACES ± | --- | ±.015 |
| 2 PLACES ± | .38 | ±---  |
| 1 PLACE ±  | --- | ±---  |

ANGULAR ± 3°

DRAFT WHERE APPLICABLE MUST REMAIN WITHIN DIMENSIONS

DIMENSION STYLE: IN/MM

SCALE: 1:1

DESIGN UNITS: METRIC

THIRD ANGLE PROJECTION

TITLE: MINI-FIT JR RIGHT ANGLE HEADER ASSEMBLY SINGLE ROW, GLOW WIRE

APPROVED BY: FSMITH DATE: 2009/06/16

MATERIAL NO. SEE CHART

DOCUMENT NO. SD-5569-NL\*-225

SHEET NO. 1 OF 1

THIS DRAWING CONTAINS INFORMATION THAT IS PROPRIETARY TO MOLEX INCORPORATED AND SHOULD NOT BE USED WITHOUT WRITTEN PERMISSION