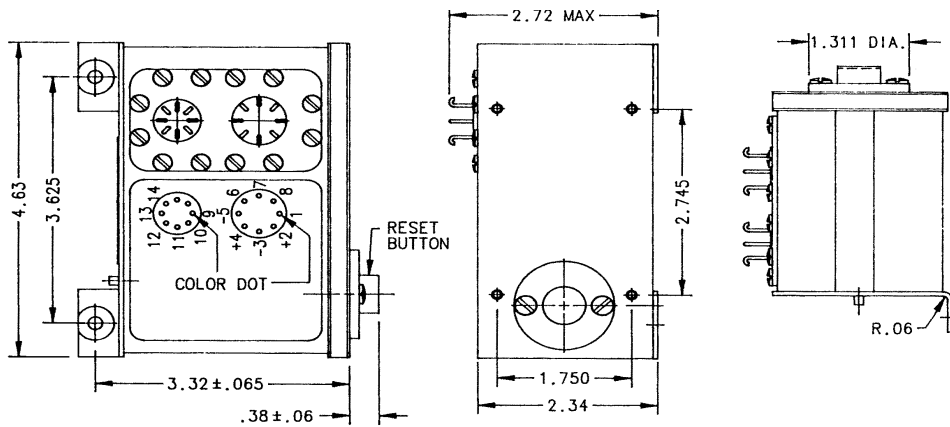


# A-837D Armature Relay

## 15/3 Amps, 28 VDC

**Features:**

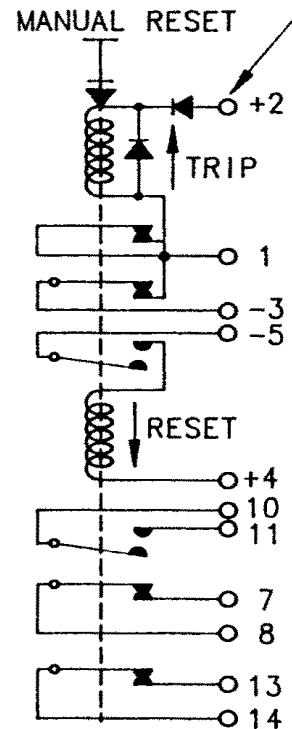
- Latching
- Manual and Electrical Reset
- 15 and 3 Amps
- Trip Time 20 milliseconds
- High Reliability
- Meets many requirements of MIL-R-6106



Dimensions for this product are expressed in inches. Multiply values by 25.4 for millimeters.

**CONTACTOR CONFIGURATION**

**"WILL NOT FUNCTION WHEN VOLTAGE IS PRESENT ON TRIP COIL"**



Notes:

PRODUCT SPECIFICATIONS	
<b>Trip Coil:</b>	Nominal VDC 28
Intermittent Maximum VDC	80
Maximum VDC to Trip	11
Coil Resistance at 25°C	16 ±10% Ohms
<b>Reset Coil:</b>	Nominal VDC 28
Intermittent Maximum VDC	45
Maximum VDC to Reset	11
Coil Resistance at 25°C	16 ±10% Ohms
<b>Contacts 7 &amp; 8</b>	28 VDC 15 Amps Inductive
<b>Other Contacts</b>	38 VDC 3 Amps Inductive
<b>Contact Trip Time</b>	20 Milliseconds Maximum at 18 Volts
<b>Ambient Temperature</b>	-65°C to +80°C
<b>Life</b>	5,000 Operations
<b>Weight Maximum</b>	1 Lb. 13 Oz.

For factory-direct application assistance, contact the HARTMAN product team at (419) 521-9500, Fax (419) 526-2749.

© 2004 by Tyco Electronics Corporation. All Rights Reserved. HARTMAN and TYCO are trademarks.

Catalog (web doc only)  
Revised 5-04

www.tycoelectronics.com

Dimensions are in inches and millimeters unless otherwise specified. Values in brackets are metric equivalents.

Dimensions are shown for reference purposes only. Specifications subject to change.

USA: 1-800-522-6752  
Canada: 1-905-470-4425  
Mexico: 01-800-733-8926  
C. America: 52-55-5-729-0425

South America: 55-11-3611-1514  
Hong Kong: 852-2735-1628  
Japan: 81-44-844-8013  
UK: 44-141-810-8967