

PLEASE CHECK WWW.MOLEX.COM FOR LATEST PART INFORMATION

Part Number: [1300970269](#)
Status: **Active**
Overview: [brad wire mesh grips](#)
Description: Strain Relief Wide Range Dust Tight Grip, 1 1/4" NPT, Straight Female, Cable Diameter

Documents:

[Drawing \(PDF\)](#) [RoHS Certificate of Compliance \(PDF\)](#)

Agency Certification

CSA LR32159

General

Product Family	Cable Grips
Series	130097
Eye Type	N/A
Insulated	Yes
O-Ring	No
Overview	brad wire mesh grips
Product Name	Dust-Tight
Type	Strain Relief Grips
Woodhead	Yes

Physical

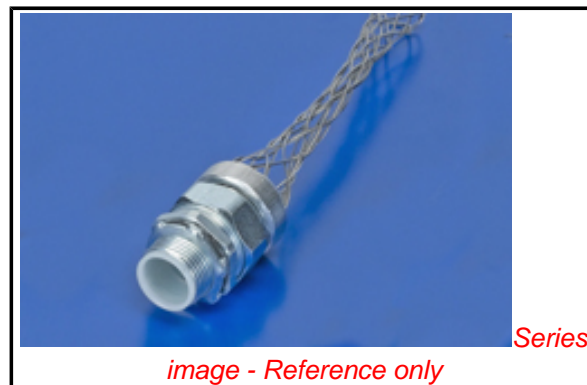
Approximate Break Strength	700 lbs
Bale Length	N/A
Body Style	Straight
Cable Diameter	23.88-31.75mm (.940-1.250")
Color - Grommet	N/A
Gender	Female
Material - Body	Nylon
Material - Grip	Nylon
Mesh Length	0.279m (11.00")
Number of Holes	N/A
Strain Relief Force	35 lbs
Thread Size	1 1/4" NPT

Material Info

Old Part Number 36515

Reference - Drawing Numbers

Sales Drawing SD-130097-002



EU RoHS

**ELV and RoHS
Compliant**
**REACH SVHC
Not Reviewed**
**Halogen-Free
Status
Not Reviewed**

China RoHS



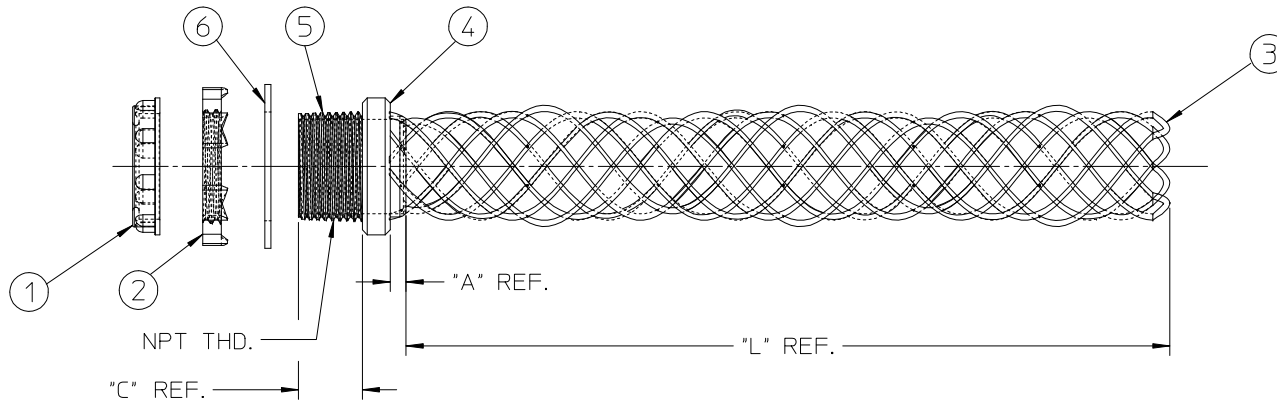
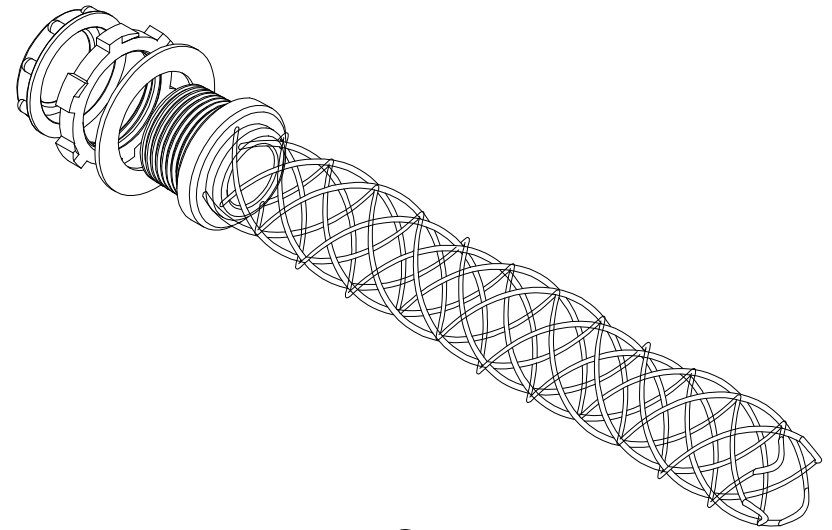
**Need more information on product
environmental compliance?**

Email productcompliance@molex.com
 For a multiple part number RoHS Certificate of
 Compliance, [click here](#)

Please visit the [Contact Us](#) section for any
 non-product compliance questions.

Search Parts in this Series
[130097Series](#)

PART NUMBER	OLD PART NUMBER	CORD DIAMETER RANGE	FITTING SIZE NPT	BREAK STRENGTH	*A* DIMENSION	*L*		*C*
						LENGTH REF. WITH ROD	LENGTH REF. WITHOUT ROD	
1300970256	36501	.22-.32/5.6-8.1	1/2"	300 LBS	.109/2.77	4.00/101.6	4.50/114.3	.65/16.5
1300970258	36503	.30-.43/7.6-10.9	1/2"	300 LBS	.109/2.77	4.50/114.3	4.75/120.7	.65/16.5
1300970260	36505	.40-.54/10.2-13.7	1/2"	370 LBS	.109/2.77	5.50/139.8	6.00/152.4	.65/16.5
1300970262	36508	.52-.73/13.2-18.5	3/4"	450 LBS	.109/2.77	6.50/165.1	7.50/190.5	.67/17.0
1300970265	36512	.70-.97/17.8-24.6	1"	700 LBS	.109/2.77	8.00/203.2	9.25/234.9	.82/20.8
1300970269	36515	.94-1.25/23.9-31.8	1-1/4"	700 LBS	.109/2.77	9.00/228.6	11.00/279.4	.85/21.6
1300970271	36516	1.20-1.50/30.5-38.1	1-1/2"	1400 LBS	.109/2.77	11.00/279.4	11.75/298.5	.87/22.1
1300970272	36517	1.40-1.75/35.5-44.5	2"	1400 LBS	.187/4.75	13.0/330.2	14.00/355.6	.90/22.9
1300970273	36518	1.62-2.00/41.1-50.8	2-1/2"	1400 LBS	.250/6.35	13.50/342.9	15.50/393.7	1.35/34.3
1300970274	36519	2.00-2.45/50.8-62.2	2-1/2"	1400 LBS	.250/6.35	13.50/342.9	17.00/431.8	1.35/34.3



6	1	GASKET (B)	NEOPRENE	BLACK
5	1	THREADED BODY	ALUMINUM	NONE
4	1	OUTER RING	ALUMINUM	NONE
3	1	WIRE MESH ASSEMBLY	STEEL	GALVANIZED
2	1	LOCKNUT	STEEL	ZINC PLATED
1	1	BUSHING	NYLON 6/6	GRAY
ITEM	QTY.	DESCRIPTION	MATERIAL	FINISH

REV. TABLE DIMS. BOM
 ADDED GASKET
 EC NO: WNAZ009-0754
 DR: WAINSTONE 2009/05/15
 CHK: B. WOODMAN
 APPR: J. MURPHY 2009/06/10

QUALITY SYMBOLS
 ▽=0
 ▽=0

GENERAL TOLERANCES (UNLESS SPECIFIED)

	mm	INCH
4 PLACES	± .005	± .0005
3 PLACES	± .005	± .0005
2 PLACES	± .01	± .001
1 PLACE	± .03	± .001
ANGULAR ±1/2°		

DRAFT WHERE APPLICABLE
 MUST REMAIN WITHIN DIMENSIONS

DIMENSION STYLE
 IN/MM

DRAWN BY DATE
 S. GARCIA 2009/03/18

CHECKED BY DATE
 B. WOODMAN 2009/03/18

APPROVED BY DATE
 J. MURPHY 2009/03/18

MATERIAL NO.

SCALE
 1:2

DESIGN UNITS
 INCH

THIRD ANGLE PROJECTION

TITLE
 WIDE-RANGE GRIP
 1/2 INSULATED

Molex MOLEX INCORPORATED

DOCUMENT NO.
 SD-130097-002

SHEET NO.
 1 OF 1