

**PLEASE CHECK WWW.MOLEX.COM FOR LATEST PART INFORMATION**

**Part Number:** [1300970161](#)  
**Status:** **Active**  
**Overview:** [brad wire mesh grips](#)  
**Description:** Deluxe Cord Grips Strain Relief, 1/2" NPT, Straight Female, Cable Diameter 6.35-7.93mm (.250-.312")

**Documents:**

[Drawing \(PDF\)](#) [RoHS Certificate of Compliance \(PDF\)](#)

**Agency Certification**

CSA LR32159  
 UL E76954

**General**

Product Family Cable Grips  
 Series [130097](#)  
 Eye Type N/A  
 Hazardous Locations Class I, Div. 2, Class II, Div. 1 and 2, Class III, Div. 1 and 2  
 Insulated No  
 O-Ring No  
 Overview [brad wire mesh grips](#)  
 Product Name Deluxe Cord  
 Type Strain Relief Grips  
 Use With [1300990143](#) 1/2" NPT MAX-LOC® Lock Nut, [1300990149](#) 1/2" NPT MAX-LOC® Gasket  
 Woodhead Yes

**Physical**

Approximate Break Strength N/A  
 Bale Length 0.057m (2.25")  
 Body Style Straight  
 Cable Diameter 6.35-7.93mm (.250-.312")  
 Color - Grommet N/A  
 Gender Female  
 Material - Body Aluminum  
 Material - Grip Stainless Steel  
 Mesh Length 0.114m (4.50")  
 Number of Holes N/A  
 Strain Relief Force 35 lbs  
 Thread Size 1/2" NPT

**Material Info**

Old Part Number 36251

**Reference - Drawing Numbers**

Sales Drawing SD-130097-004

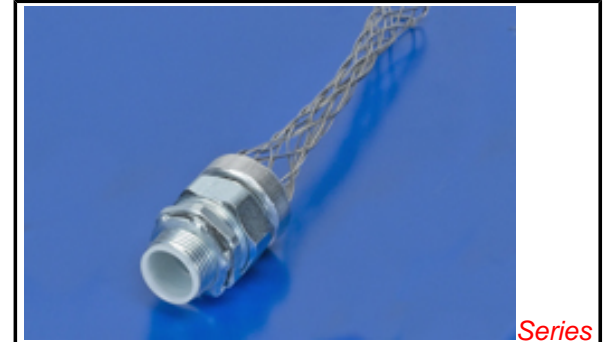


image - Reference only

Series

**EU RoHS**

**ELV and RoHS Compliant**  
**REACH SVHC Not Reviewed**  
**Halogen-Free Status Not Reviewed**

**China RoHS**



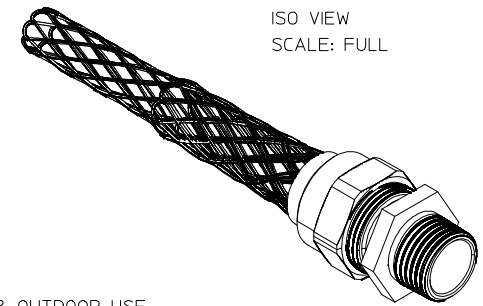
**Need more information on product environmental compliance?**

Email [productcompliance@molex.com](mailto:productcompliance@molex.com)  
 For a multiple part number RoHS Certificate of Compliance, [click here](#)

Please visit the [Contact Us](#) section for any non-product compliance questions.

**Search Parts in this Series**  
[130097Series](#)

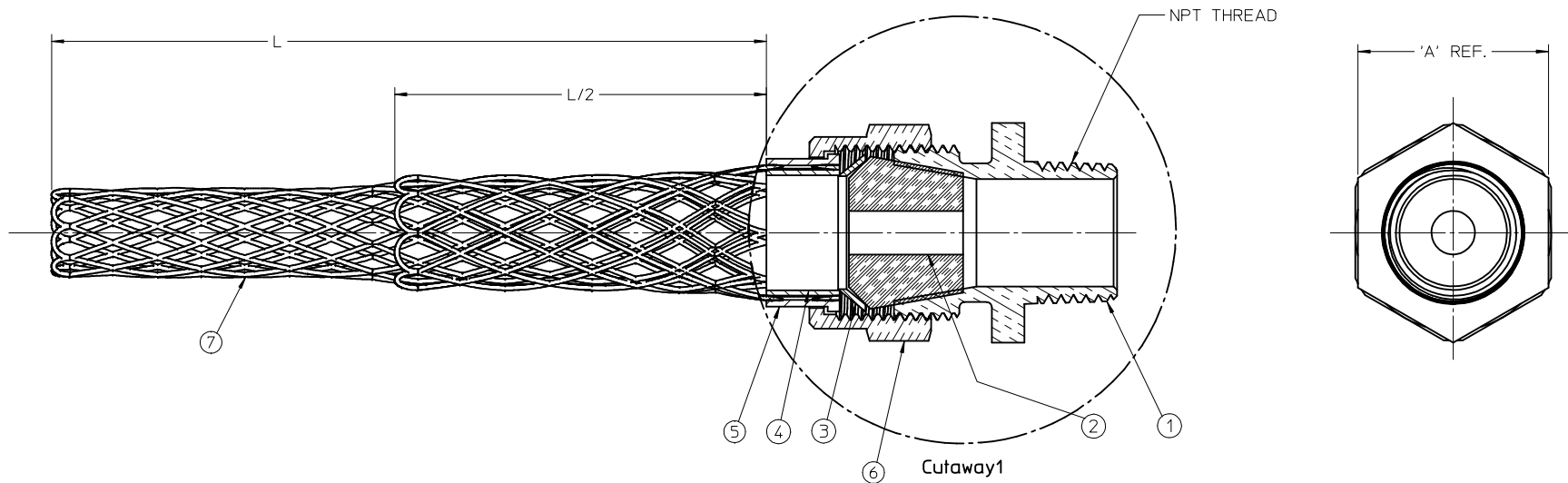
| PART NO.   | ENGINEERING NO. | CABLE RANGE         | THREAD SIZE | 'A' HEX     | 'L' LENGTH   | L/2 LENGTH   |
|------------|-----------------|---------------------|-------------|-------------|--------------|--------------|
| 1300970250 | 36490           | .19-.25 / 4.8-6.4   | 3/8 NPT     | .88 / 22.4  | 4.25 / 108.0 | 2.13 / 54.0  |
| 1300970225 | 36430           | .25-.31 / 6.4-7.9   |             |             |              | 2.13 / 54.0  |
| 1300970226 | 36431           | .31-.38 / 7.9-9.7   |             |             |              | 2.13 / 54.0  |
| 1300970227 | 36432           | .38-.44 / 9.7-11.2  |             |             | 5.50 / 140.0 | 2.75 / 69.9  |
| 1300970160 | 36250           | .19-.25 / 4.8-6.4   | 1/2 NPT     | 1.09 / 27.7 | 4.00 / 102.0 | 2.00 / 51.0  |
| 1300970161 | 36251           | .25-.38 / 6.4-9.7   |             |             | 4.50 / 114.0 | 2.25 / 57.0  |
| 1300970163 | 36254           | .38-.50 / 9.7-12.7  |             |             | 6.25 / 159.0 | 3.13 / 79.5  |
| 1300970165 | 36256           | .50-.63 / 12.7-16.0 |             |             | 7.00 / 178.0 | 3.50 / 89.0  |
| 1300970156 | 36245           | .63-.75 / 16.0-19.0 |             |             |              |              |
| 1300970157 | 36246           | .75-.88 / 19.0-22.4 |             |             |              |              |
| 1300970166 | 36257           | .25-.38 / 6.4-9.7   | 3/4 NPT     | 1.15 / 29.2 | 5.63 / 143.0 | 2.82 / 71.5  |
| 1300970167 | 36259           | .38-.50 / 9.7-12.7  |             |             | 6.25 / 159.0 | 3.13 / 79.5  |
| 1300970168 | 36261           | .50-.63 / 12.7-16.0 |             |             | 7.00 / 178.0 | 3.50 / 89.0  |
| 1300970170 | 36263           | .63-.75 / 16.0-19.0 |             |             | 9.50 / 241.3 | 4.75 / 120.7 |
| 1300970158 | 36248           | .75-.88 / 19.0-22.4 |             |             | 9.25 / 235.0 | 4.63 / 117.5 |



ISO VIEW  
SCALE: FULL

NOTES:

1. MATERIAL: SEE TABLE
2. FINISHES: SEE TABLE
3. SUITABLE FOR INDOOR & OUTDOOR USE
4. SUITABLE FOR HAZARDOUS LOCATIONS  
CLASS 1 DIV.2, CLASS2 DIV. 1 & 2  
CLASS 3 DIV. 1 & 2
5. STAIN RELIEF FORCE: 35 LBS.
6. ASSEMBLY IS RoHS COMPLIANT



|      |      |                 |           |             |
|------|------|-----------------|-----------|-------------|
| 7    | 1    | WIRE MESH       | ST. STEEL |             |
| 6    | 1    | COMPRESSION NUT | ALUMINUM  |             |
| 5    | 1    | OUTER RING      | ALUMINUM  |             |
| 4    | 1    | INNER RING      | ALUMINUM  |             |
| 3    | 1    | FRICTION RING   | STEEL     | ZINC PLATED |
| 2    | 2    | GROMMET         | RUBBER    | BLACK       |
| 1    | 1    | CORD GRIP BODY  | ALUMINUM  |             |
| ITEM | QTY. | DESCRIPTION     | MATERIAL  | FINISH      |

|             |                     |            |
|-------------|---------------------|------------|
| RELEASED    | EC NO: WNA2009-0602 | 2009/03/24 |
| DRAWN BY    | DRWINRSTONE         | 2009/03/24 |
| CHECKED BY  | CHKD:B. WOODMAN     |            |
| APPROVED BY | APPR:J.MURPHY       | 2009/04/01 |
| REV         | DESCRIPTION         |            |

QUALITY SYMBOLS  
 ▽=0  
 ▽=0

GENERAL TOLERANCES (UNLESS SPECIFIED)

|            | mm  | INCH |
|------------|-----|------|
| 4 PLACES ± | --- | ---  |
| 3 PLACES ± | --- | ---  |
| 2 PLACES ± | --- | ±.01 |
| 1 PLACE ±  | 0.3 | ---  |

ANGULAR ±1/2°

DRAFT WHERE APPLICABLE  
MUST REMAIN  
WITHIN DIMENSIONS

| DIMENSION STYLE |            | SCALE                                     | DESIGN UNITS | THIRD ANGLE PROJECTION |
|-----------------|------------|---|--------------|------------------------|
| IN/MM           |            | 2:1                                       | INCH         | ☉                      |
| DRAWN BY        | DATE       | TITLE                                     |              |                        |
| R. STONE        | 2009/03/20 | DELUXE CORD GRIP<br>STRAIGHT, MALE THREAD |              |                        |
| CHECKED BY      | DATE       | MATERIAL NO.                              |              |                        |
| B. WOODMAN      | 2008/03/24 | SEE CHART                                 |              |                        |
| APPROVED BY     | DATE       | DOCUMENT NO.                              |              |                        |
| J. MURPHY       | 2009/03/26 | SD-130097-004                             |              |                        |
| SIZE            |            | SHEET NO.                                 |              |                        |
| C               |            | 1 OF 1                                    |              |                        |

THIS DRAWING CONTAINS INFORMATION THAT IS PROPRIETARY TO MOLEX INCORPORATED AND SHOULD NOT BE USED WITHOUT WRITTEN PERMISSION