

**PLEASE CHECK WWW.MOLEX.COM FOR LATEST PART INFORMATION**

**Part Number:** **0500618100**  
**Status:** **Active**  
**Description:** 1.25mm (.049") Pitch Board-In Crimp Terminal, 28-32 AWG, Bag

**Documents:**

[3D Model](#) [Product Specification PS-51022-001 \(PDF\)](#)  
[Drawing \(PDF\)](#) [RoHS Certificate of Compliance \(PDF\)](#)

**General**

Product Family Crimp Terminals  
 Series 50061  
 Crimp Quality Equipment Yes  
 Product Name Board-In

**Physical**

Gender Male  
 Material - Metal Phosphor Bronze  
 Material - Plating Mating Tin  
 Material - Plating Termination Tin  
 Packaging Type Bag  
 Plating min: Mating (µin) 36  
 Plating min: Mating (µm) 0.90  
 Plating min: Termination (µin) 36  
 Plating min: Termination (µm) 0.90  
 Termination Interface: Style Crimp or Compression  
 Wire Insulation Diameter 0.50-1.00mm (.020-.039")  
 Wire Size AWG 28, 30, 32  
 Wire Size mm<sup>2</sup> N/A

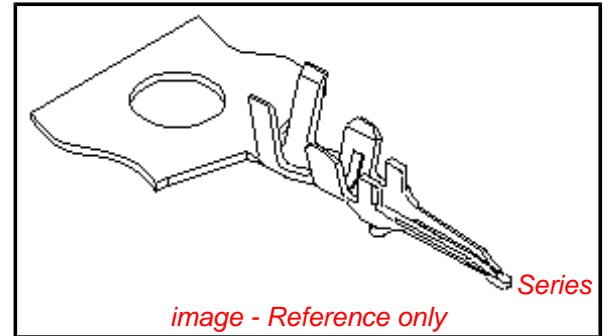
**Electrical**

Current - Maximum per Contact 0.8A, 1A  
 Voltage - Maximum 125V

**Material Info**

**Reference - Drawing Numbers**

Product Specification PS-51022-001, RPS-51022-001  
 Sales Drawing SD-50061-8\*00



**EU RoHS**

**ELV and RoHS Compliant**  
**REACH SVHC Contains SVHC: No**  
**Halogen-Free Status**  
**Not Reviewed**

**China RoHS**



**Need more information on product environmental compliance?**

Email [productcompliance@molex.com](mailto:productcompliance@molex.com)  
 For a multiple part number RoHS Certificate of Compliance, [click here](#)

Please visit the [Contact Us](#) section for any non-product compliance questions.

**Search Parts in this Series**

50061Series

**Use With**

51022

**Application Tooling | FAQ**

*Tooling specifications and manuals are found by selecting the products below. Crimp Height Specifications are then contained in the Application Tooling Specification document.*

**Global**

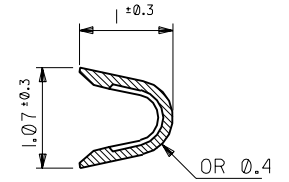
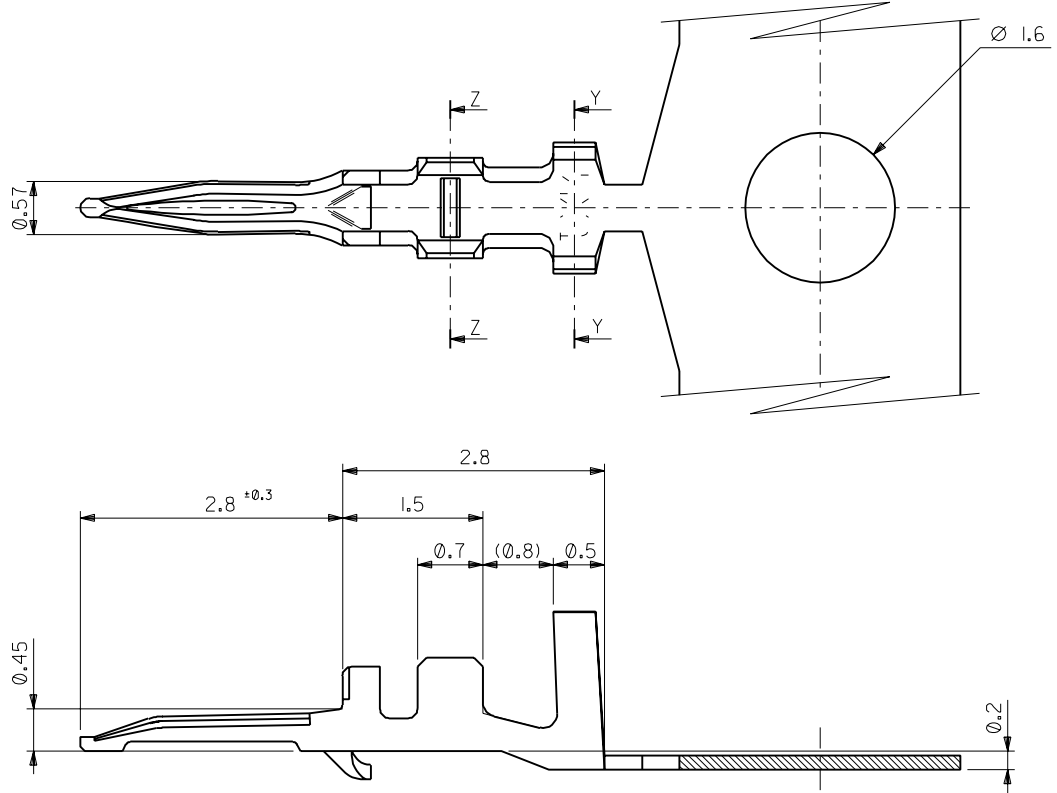
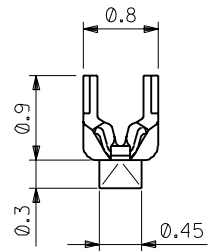
Description	Product #
Extraction Tool	<a href="#">0011030043</a>
Hand Crimp Tool for 1.25mm (.049") Pitch PicoBlade™ Crimp Terminals, 26-32 AWG	<a href="#">0638190300</a>

**Japan**

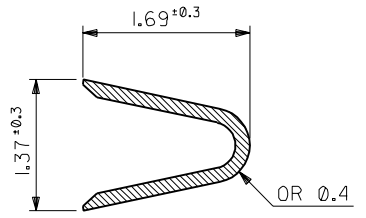
Description	Product #
Extraction Tool	<a href="#">0570726000</a>
Hand Crimp Tool	<a href="#">0570705000</a>

This document was generated on 04/15/2010

**PLEASE CHECK [WWW.MOLEX.COM](http://WWW.MOLEX.COM) FOR LATEST PART INFORMATION**



SECT. Z-Z



SECT. Y-Y

注記  
NOTES

- 適合ハウジング: 51022 シリーズ  
APPLICABLE HOUSING : 51022 SERIES
- メッキ仕様 PLATING  
錫 0.9µm MIN. リフロー処理 (前メッキ)  
TIN 0.9µm MIN. REFLOW TREATMENT (PRE-PLATED)

角度 ANGLE	公差
30° 以上 OVER	+0.3
10° 以上 30° 未満 UNDER	+0.25
10° 未満 UNDER	+0.2

記号 LTR	変更内容 REVISION RECORD	DR. CHK.	日付 DATE
E	変更 REVISD (J30697)	H.H. M.F.	93/7/10
D	変更 & 再作図 REVISD & REDRAWN (J20810)	H.H. M.F.	92/10/27

材料 MATERIAL	リン青銅 PHOSPHOR BRONZE (t=0.15)
仕上げ FINISH	—H—
適用電線範囲 WIRE RANGE	AWG #28-32
被覆外径 INS. RANGE	Ø 0.5-1.0
DRAWN BY	H.HIRAMOTO
CHK'D BY	H.HIRAMOTO
APP'D BY	M.FUKUSHIMA
尺度 SCALE	20 - 1

50061-8100	バラ状 LOOSE
50061-8000	連鎖状 CHAIN
ENG. NO.	端子形状 FORM

molex MOLEX-JAPAN CO.,LTD. 日本モレックス株式会社	
REVISE ONLY ON CAD SYSTEM	
TITLE 名称 1.25 BOARD IN CRIMP TERMINAL	
DWG. NO.	REV
SD-50061-8*00	E