

PLEASE CHECK WWW.MOLEX.COM FOR LATEST PART INFORMATION

Part Number: [0399400223](#)
Status: **Active**
Description: 5.08mm (.200") Pitch Beau™ EuroMate™ Pluggable PCB Terminal Block, Dual Level, 90° Wire Entry, 23 Circuits

Documents:

[Drawing \(PDF\)](#) [RoHS Certificate of Compliance \(PDF\)](#)
[Product Specification PS-39940-001 \(PDF\)](#)

Agency Certification

UL E48521

General

Product Family Terminal Blocks
 Series [39940](#)
 Application Wire-to-Board
 Comments Gold plating available
 Component Type Plug
 Product Literature Order No USA-264
 Product Name EuroMate™ Pluggable
 Type Euro Block

Physical

Circuits (Loaded) 23
 Color - Resin Black
 Entry Angle Horizontal
 Flammability 94V-0
 Lock to Mating Part None
 Material - Resin Nylon
 Number of Rows 2
 Orientation Vertical
 Panel Mount No
 Pitch - Mating Interface (in) 0.200 In
 Pitch - Mating Interface (mm) 5.08 mm
 Polarized to Mating Part Yes
 Stackable No
 Temperature Range - Operating 130°C
 Termination Interface: Style Screw or Lug
 Wire Size AWG 12, 14, 16, 18, 20, 22
 Wire Size mm² 0.50 - 2.50

Electrical

Current - Maximum per Contact 15A
 Voltage - Maximum 300V

Material Info

Old Part Number 940823

Reference - Drawing Numbers

Product Specification PS-39940-001
 Sales Drawing SD-39940-004



EU RoHS

**ELV and RoHS
 Compliant**
REACH SVHC
 Not Reviewed
**Halogen-Free
 Status**
Not Reviewed

China RoHS



**Need more information on product
 environmental compliance?**

Email productcompliance@molex.com
 For a multiple part number RoHS Certificate of
 Compliance, [click here](#)

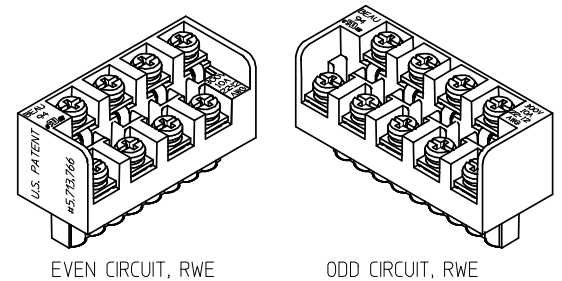
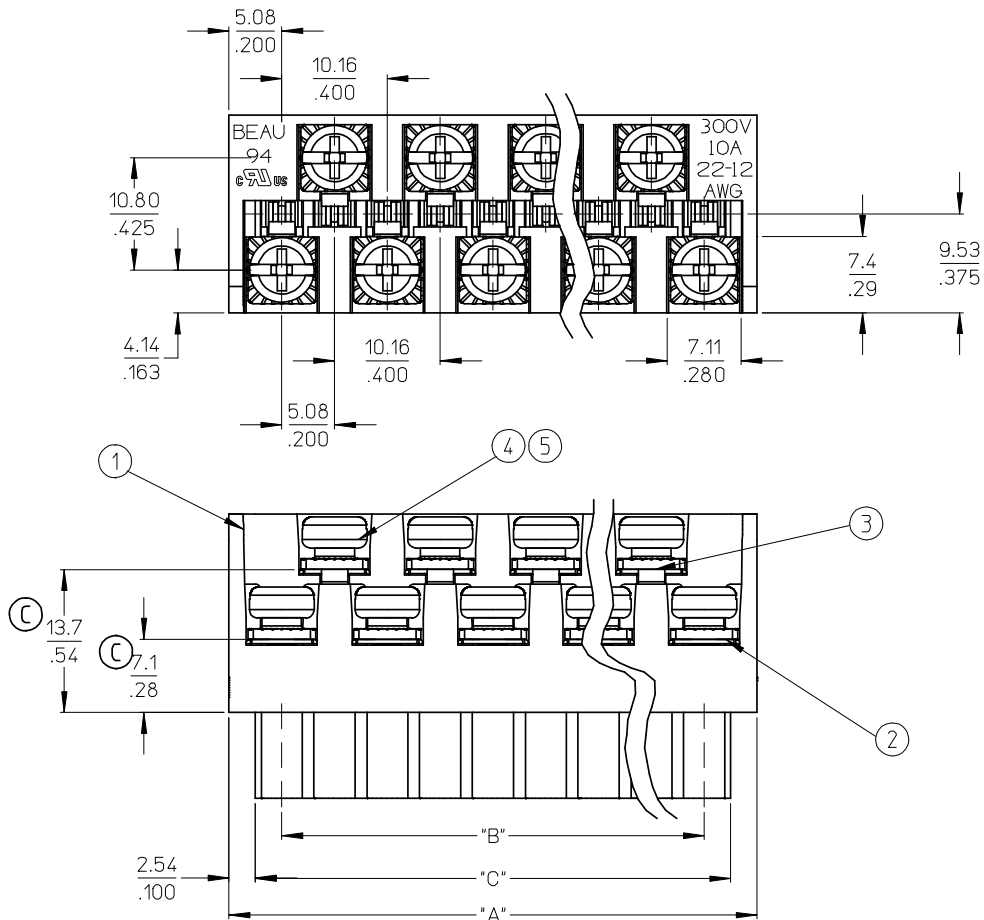
Please visit the [Contact Us](#) section for any
 non-product compliance questions.

Search Parts in this Series

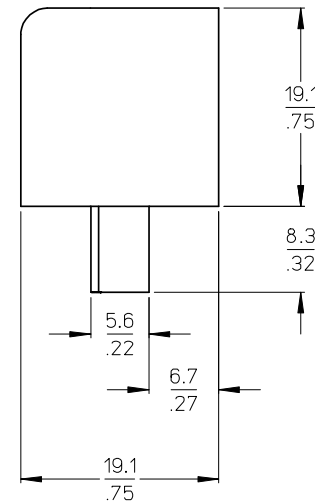
[39940Series](#)

Mates With

[39531-0023](#) , [39531-1023](#) , [39532-0023](#) ,
[39532-1023](#)



AUXILIARY VIEWS
SCALE 1:1



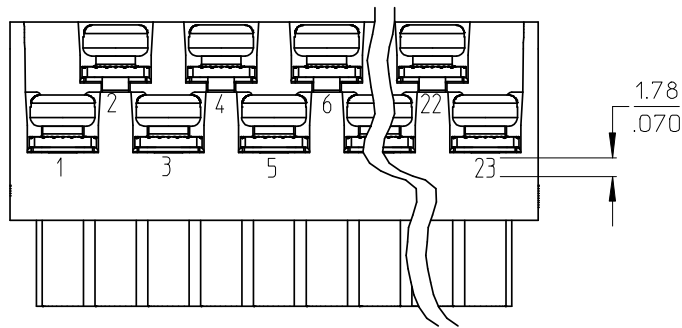
- NOTES:
1. MATERIAL: SEE TABLE
 2. FINISHES: SEE TABLE
 3. PRODUCT SPECIFICATION: NOT REQUIRED
 4. PACKAGING: NOT REQUIRED
 5. MATES WITH: MOST 5.08 (.200) PIN HEADERS
 6. "XX" REFERS TO THE QUANTITY OF CIRCUITS
 7. ROHS COMPLIANT

ODD CIRCUIT CONFIGURATION SHOWN

ITEM	QTY. (EVEN NO. OF CIRCUITS)	QTY. (ODD NO. OF CIRCUITS)	DESCRIPTION	MATERIAL	FINISH
5	XX	XX	SCREW, M3.5 X .280	STEEL	ZINC CHROMATE
4	XX	XX	NUT, M3.5, HEX	STEEL	ZINC CHROMATE
3	XX/2	(XX-1)/2	REAR ROW TERM. (LONG)	PHOS. BRONZE	HOT TIN DIP
2	XX/2	(XX+1)/2	FRONT ROW TERM. (SHORT)	PHOS. BRONZE	HOT TIN DIP
1	1	1	BARRIER	THERMOPLASTIC	BLACK

REVISED & REDRAWN EC NO: WNA2008-0391 DRWN: JENC INAS 2008/07/01 CHK'D: CYORK 2008/07/02 APPR: JMACNEIL 2008/07/07 REV DESCRIPTION	QUALITY SYMBOLS ▽=0 ▽=0	GENERAL TOLERANCES (UNLESS SPECIFIED) <table border="1"> <thead> <tr> <th></th> <th>mm</th> <th>INCH</th> </tr> </thead> <tbody> <tr> <td>4 PLACES</td> <td>±---</td> <td>±---</td> </tr> <tr> <td>3 PLACES</td> <td>±---</td> <td>±.005</td> </tr> <tr> <td>2 PLACES</td> <td>±0.13</td> <td>±.01</td> </tr> <tr> <td>1 PLACE</td> <td>±0.3</td> <td>±---</td> </tr> </tbody> </table>		mm	INCH	4 PLACES	±---	±---	3 PLACES	±---	±.005	2 PLACES	±0.13	±.01	1 PLACE	±0.3	±---	DIMENSION STYLE MM/IN	SCALE 2:1	DESIGN UNITS INCH	THIRD ANGLE PROJECTION
		mm	INCH																		
	4 PLACES	±---	±---																		
	3 PLACES	±---	±.005																		
2 PLACES	±0.13	±.01																			
1 PLACE	±0.3	±---																			
DRAFT WHERE APPLICABLE MUST REMAIN WITHIN DIMENSIONS		DRAWN BY J. FARMER DATE 2004/12/06	CHECKED BY R. KEMP DATE 2004/12/06	TITLE 5.08/.200 PLUG ASSY, RWE WITH CLOSED ENDS (9408XX)																	
		APPROVED BY GHR DATE 2004/12/06	MOLEX INCORPORATED																		
		MATERIAL NO. SEE SHEET 2	DOCUMENT NO. SD-39940-004	SHEET NO. 1 OF 2																	

NO. OF CIRC. "XX"	"A" DIM.		"B" DIM.		"C" $\begin{matrix} +.00 \\ -.25 \end{matrix}$ [$\begin{matrix} +.000 \\ -.010 \end{matrix}$]		MATERIAL NO. (STANDARD)
03	20.3	[.80]	10.16	[.400]	15.2	[.60]	399400203
04	25.4	[1.00]	15.24	[.600]	20.3	[.80]	399400204
05	30.5	[1.20]	20.32	[.800]	25.4	[1.00]	399400205
06	35.6	[1.40]	25.40	[1.000]	30.5	[1.20]	399400206
07	40.6	[1.60]	30.48	[1.200]	35.6	[1.40]	399400207
08	45.7	[1.80]	35.56	[1.400]	40.6	[1.60]	399400208
09	50.8	[2.00]	40.64	[1.600]	45.7	[1.80]	399400209
10	55.9	[2.20]	45.72	[1.800]	50.8	[2.00]	399400210
11	61.0	[2.40]	50.80	[2.000]	55.9	[2.20]	399400211
12	66.0	[2.60]	55.88	[2.200]	61.0	[2.40]	399400212
13	71.1	[2.80]	60.96	[2.400]	66.0	[2.60]	399400213
14	76.2	[3.00]	66.04	[2.600]	71.1	[2.80]	399400214
15	81.3	[3.20]	71.12	[2.800]	76.2	[3.00]	399400215
16	86.4	[3.40]	76.20	[3.000]	81.3	[3.20]	399400216
17	91.4	[3.60]	81.28	[3.200]	86.4	[3.40]	399400217
18	96.5	[3.80]	86.36	[3.400]	91.4	[3.60]	399400218
19	101.6	[4.00]	91.44	[3.600]	96.5	[3.80]	399400219
20	106.7	[4.20]	96.52	[3.800]	101.6	[4.00]	399400220
21	111.8	[4.40]	101.60	[4.000]	106.7	[4.20]	399400221
22	116.9	[4.60]	106.68	[4.200]	111.8	[4.40]	399400222
23	121.9	[4.80]	111.76	[4.400]	116.8	[4.60]	399400223
24	127.0	[5.00]	116.84	[4.600]	121.9	[4.80]	399400224



OPTIONAL
10A IMPRINTING
(ODD CIRCUIT CONFIGURATION SHOWN)

SEE SHEET ONE EEC NO: WNA2008-0391 DRWN: JENCINAS 2008/07/01 CHKD: CYORK 2008/07/02 APPR: JMACNEIL 2008/07/07	QUALITY SYMBOLS ▽=0 ▽=0	GENERAL TOLERANCES (UNLESS SPECIFIED) mm INCH 4 PLACES ± --- ± --- 3 PLACES ± --- ± .005 2 PLACES ± 0.13 ± .01 1 PLACE ± 0.3 ± --- ANGULAR ± 2 °	DIMENSION STYLE MM/IN	SCALE 2:1	DESIGN UNITS INCH	THIRD ANGLE PROJECTION
	DRAWN BY J. FARMER	DATE 2004/12/06	TITLE 5.08/.200 PLUG ASSY, RWE WITH CLOSED ENDS (9408XX)			
	CHECKED BY R. KEMP	DATE 2004/12/06	MOLEX INCORPORATED			
	APPROVED BY GHR	DATE 2004/12/06	MATERIAL NO. SEE CHART	DOCUMENT NO. SD-39940-004	SHEET NO. 2 OF 2	
DRAFT WHERE APPLICABLE MUST REMAIN WITHIN DIMENSIONS		THIS DRAWING CONTAINS INFORMATION THAT IS PROPRIETARY TO MOLEX INCORPORATED AND SHOULD NOT BE USED WITHOUT WRITTEN PERMISSION				