

PLEASE CHECK WWW.MOLEX.COM FOR LATEST PART INFORMATION

Part Number: [0192020049](#)
Status: **Active**
Description: Nylakrimp™ Butt Splice for 10-12 AWG Wire

Documents:

[Drawing \(PDF\)](#) [RoHS Certificate of Compliance \(PDF\)](#)

Agency Certification

CSA LR18689
 UL E32244

General

Product Family Splices
 Series [19202](#)
 Crimp Quality Equipment Yes
 Mil-Spec N/A
 MolexKits Yes
 Product Name Butt, NylaKrimp™

Physical

Barrel Type Closed - Brazed
 Flammability 94V-2
 Insulation Nylon (PA)
 Packaging Type Bag
 Temperature Range - Operating -55°C to +105°C
 Wire Insulation Diameter 5.72mm (.225") max
 Wire Size AWG 10, 12
 Wire Size mm² 3.30 - 5.00

Electrical

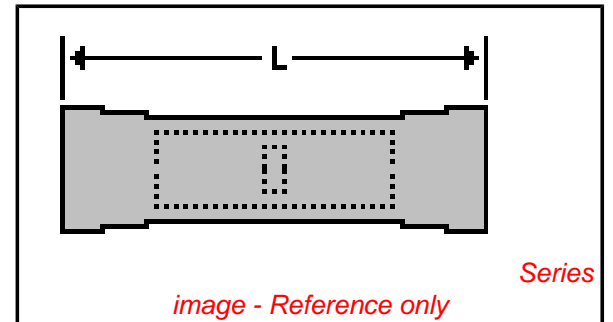
Voltage - Maximum 600V

Material Info

Old Part Number CS-N-346

Reference - Drawing Numbers

Sales Drawing 60002-11C, 6000211C



EU RoHS

**ELV and RoHS
 Compliant**

REACH SVHC

Not Reviewed

Halogen-Free

Status

Not Reviewed

China RoHS



**Need more information on product
 environmental compliance?**

Email productcompliance@molex.com
 For a multiple part number RoHS Certificate of
 Compliance, [click here](#)

Please visit the [Contact Us](#) section for any
 non-product compliance questions.

Search Parts in this Series

[19202Series](#)

Application Tooling | [FAQ](#)

*Tooling specifications and manuals are
 found by selecting the products below.*

*Crimp Height Specifications are then
 contained in the Application Tooling
 Specification document.*

Global

| Description | Product # |
|--|----------------------------|
| Hand Crimp Tool | 0640010100 |
| Hand Crimp Tool | 0640010300 |
| Hand Crimp Tool | 0640015000 |
| Crimp Head for the AT-200™ Pneumatic Hand Tool | 0640050100 |
| Crimp Head for the AT-200™ Pneumatic Hand Tool | 0640050300 |
| Crimp Head for the AT-200™ Pneumatic Hand Tool | 0640055000 |

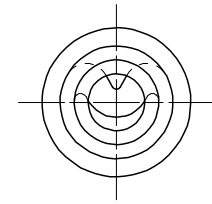
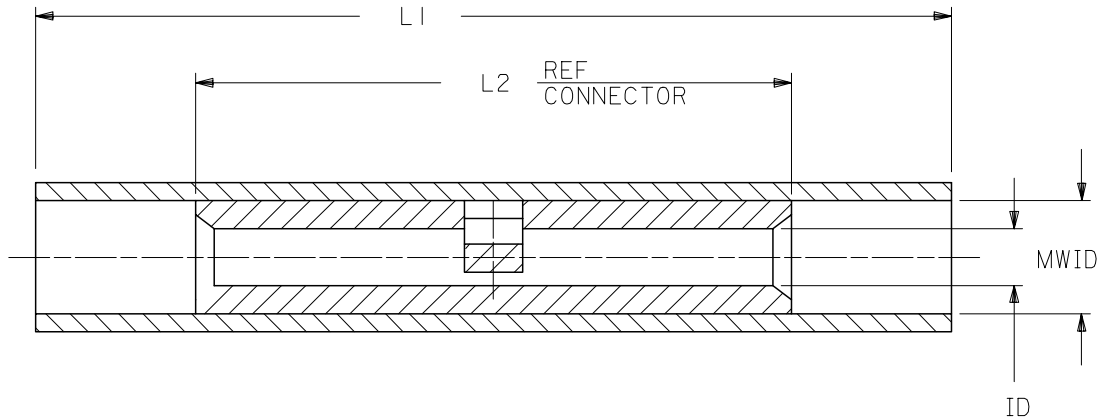
PLEASE CHECK WWW.MOLEX.COM FOR LATEST PART INFORMATION

| PART NO. | INSULATION COLOR | WIRE SIZE | ID | L1 MAX | L2 MAX. | MWID |
|----------|------------------|-----------|------|--------|---------|------|
| AS-N-345 | RED | 22-18 | .059 | 1.035 | .675 | .130 |
| BS-N-331 | BLUE | 16-14 | .091 | 1.080 | .675 | .140 |
| CS-N-346 | YELLOW | 12-10 | .138 | 1.300 | .827 | .223 |

(B)

NOTES:

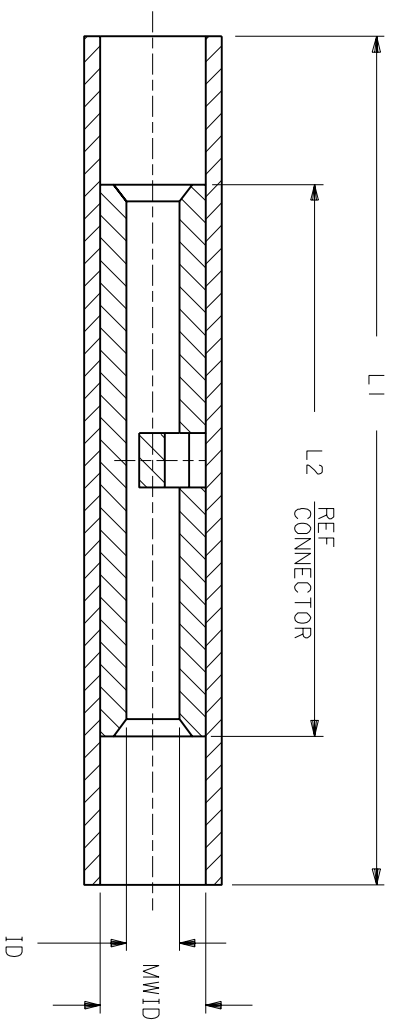
- MATERIAL:
INSULATION: NYLON
CONNECTOR: TIN PLATED SEAMLESS COPPER
- IF NECESSARY: SLIGHT FLARE ON ONE END ACCEPTABLE FOR ASSEMBLY PURPOSES.



CUSTOMER DRAWING

| REVISED & REDRAWN EC NO: B DRWN: L.SHADECK 2005/06/13 CHKD: R.DERROSS 2005/06/21 APPR: R.DERROSS 2005/06/21 DESCRIPTION REV | QUALITY SYMBOLS = 0 = 0 | GENERAL TOLERANCES (UNLESS SPECIFIED) <table border="1"> <thead> <tr> <th></th> <th>mm</th> <th>INCH</th> </tr> </thead> <tbody> <tr> <td>4 PLACES</td> <td>± ---</td> <td>± ---</td> </tr> <tr> <td>3 PLACES</td> <td>± ---</td> <td>± ---</td> </tr> <tr> <td>2 PLACES</td> <td>± ---</td> <td>± ---</td> </tr> <tr> <td>1 PLACE</td> <td>± ---</td> <td>± ---</td> </tr> </tbody> </table> | | mm | INCH | 4 PLACES | ± --- | ± --- | 3 PLACES | ± --- | ± --- | 2 PLACES | ± --- | ± --- | 1 PLACE | ± --- | ± --- | DIMENSION STYLE IN/MM | SCALE 4:1 | DESIGN UNITS INCH | THIRD ANGLE PROJECTION |
|--|--------------------------------------|---|--------------------------|-------------------------|--|----------------------------------|-------|-------|----------|-------|-------|----------|-------|-------|---------|-------|-------|---------------------------------|---------------------|-----------------------------|-------------------------------|
| | | mm | INCH | | | | | | | | | | | | | | | | | | |
| | 4 PLACES | ± --- | ± --- | | | | | | | | | | | | | | | | | | |
| | 3 PLACES | ± --- | ± --- | | | | | | | | | | | | | | | | | | |
| 2 PLACES | ± --- | ± --- | | | | | | | | | | | | | | | | | | | |
| 1 PLACE | ± --- | ± --- | | | | | | | | | | | | | | | | | | | |
| | | ANGULAR ± ---° | DRAWN BY EMF | DATE 07/03/91 | TITLE NYLAKRIMP BUTT CONNECTOR | | | | | | | | | | | | | | | | |
| | | DRAFT WHERE APPLICABLE MUST REMAIN WITHIN DIMENSIONS | CHECKED BY JM | DATE 07/03/91 | MOLEX INCORPORATED | | | | | | | | | | | | | | | | |
| | | | APPROVED BY FP | DATE 07/03/91 | MATERIAL NO. SEE TABLE | DOCUMENT NO. 60002-11C | | | | | | | | | | | | | | | |

| PART NO. | INSULATION COLOR | WIRE SIZE | ID | L1 MAX | L2 MAX | MWID |
|----------|------------------|-----------|------|--------|--------|------|
| AS-N-345 | RED | 22-18 | .059 | 1.035 | .675 | .130 |
| BS-N-331 | BLUE | 16-14 | .091 | 1.080 | .675 | .160 |
| CS-N-346 | YELLOW | 12-10 | .138 | 1.300 | .827 | .223 |



NOTES:
 1. MATERIAL:
 INSULATION: NYLON
 CONNECTOR: TIN PLATED SEAMLESS COPPER
 3. IF NECESSARY: SLIGHT FLARE ON ONE END ACCEPTABLE FOR ASSEMBLY PURPOSES.

CUSTOMER DRAWING

DIMENSIONS SHOWN (METRIC) INCH
 UNLESS OTHERWISE SPECIFIED
 TOLERANCES: ANGULAR = 1/2°

| | INCH | METRIC |
|---------|--------|--------|
| 3 PLACE | ± .005 | ± 0.13 |
| 2 PLACE | ± .01 | ± 0.25 |
| 1 PLACE | ± --- | ± --- |

DRAFT WHERE APPLICABLE MUST REMAIN WITHIN DIMENSIONS

| | | | |
|-----------|-----|-----------|--------|
| DRWG. BY | EMF | CHK'D. BY | JM |
| APP'D. BY | FP | SCALE | NO: NE |

DRWG. NO. 60002-11C

REVISE ONLY ON CAD SYSTEM

NYLAKRIMP BUTT CONNECTOR

| LTR. | REVISIONS |
|------|---|
| A | ADD P/N AND UPDATE DRAWINGS ET80539 12/18 HEB |

molex **ETC INC.** PINELLAS PARK, FLA. 33781 U.S.A. SHEET NO. 1 OF 1 DATE 91/07/03

PART NO. 60002-11C DRAWG. NO. 60002-11C

FILE NAME SEE TABLE THIS DRAWING CONTAINS INFORMATION THAT IS PROPRIETARY TO MOLEX-ETC INC. AND SHOULD NOT BE USED WITHOUT WRITTEN PERMISSION. DIV. ET SIZE A