

PLEASE CHECK WWW.MOLEX.COM FOR LATEST PART INFORMATION

Part Number: [0190180014](#)
Status: **Active**
Description: VibraKrimp™ Quick Disconnect, Female, for 14-16 (2.00-1.30) Wire, Box, Tab 6.35mm (.250") x 0.81mm (.032")

Documents:

[Drawing \(PDF\)](#) [RoHS Certificate of Compliance \(PDF\)](#)
[Product Specification PS-19902-005 \(PDF\)](#)

Agency Certification

CSA LR18689
 UL E79133

General

Product Family Quick Disconnects
 Series [19018](#)
 Comments Butted Seam
 Crimp Quality Equipment Yes
 Product Name VibraKrimp™
 Type Quick Disconnect

Physical

Barrel Type Closed
 Gender Female
 Glow-Wire Compliant No
 Insulation None
 Lock to Mating Part None
 Material - Metal Brass
 Orientation Straight
 Packaging Type Bag
 Polarized to Mating Part No
 Tab Thickness 0.81mm (.032")
 Tab Width 6.35mm (.250")
 Temperature Range - Operating Per Wire Specification
 Wire Insulation Diameter 2.10-3.70mm (.085-.145")
 Wire Size AWG 14, 16
 Wire Size mm² 1.30 - 2.00

Electrical

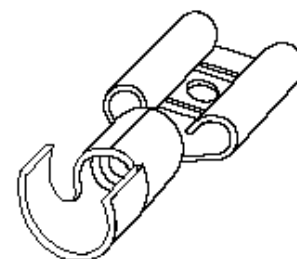
Voltage - Maximum Per Wire Specification

Material Info

Old Part Number BB-4177

Reference - Drawing Numbers

Product Specification PS-19902-005
 Sales Drawing CD51002



Series

image - Reference only

EU RoHS

ELV and RoHS Compliant
REACH SVHC
Contains SVHC: No
Halogen-Free Status

China RoHS



Need more information on product environmental compliance?

Email productcompliance@molex.com
 For a multiple part number RoHS Certificate of Compliance, [click here](#)

Please visit the [Contact Us](#) section for any non-product compliance questions.

Search Parts in this Series

[19018Series](#)

Application Tooling | FAQ

Tooling specifications and manuals are found by selecting the products below. Crimp Height Specifications are then contained in the Application Tooling Specification document.

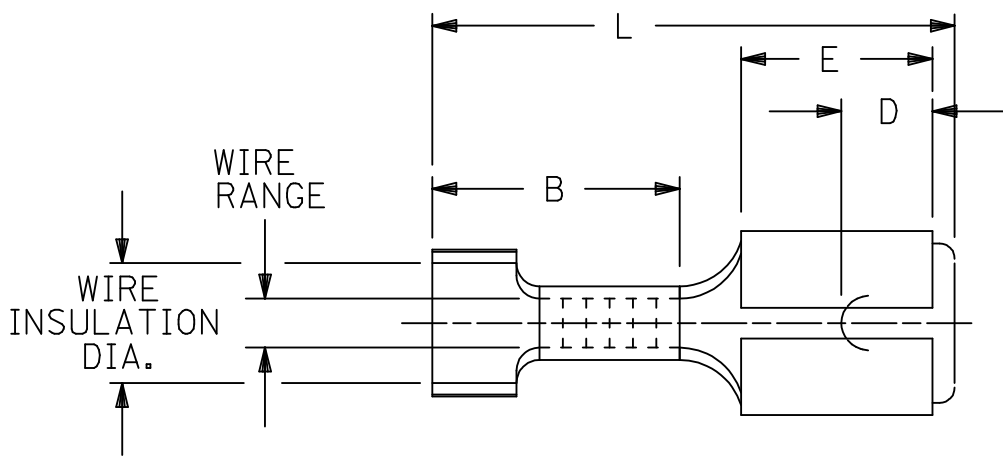
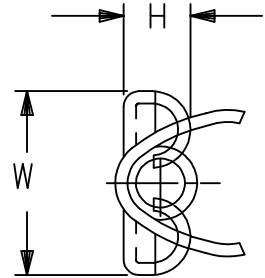
Global

| Description | Product # |
|---|----------------------------|
| Hand Crimp Tool | 0640037200 |
| RHT Hand Crimp Tool for VibraKrimp™ Female Non-Insulated Standard Quick Disconnects 12-16 AWG | 0640037300 |
| Crimp Head for the AT-200™ Pneumatic Hand Tool | 0640077200 |
| Air Powered Crimp Tool Head | 0640077300 |

This document was generated on 04/13/2010

PLEASE CHECK WWW.MOLEX.COM FOR LATEST PART INFORMATION

DRWG. NO. CD-51002



MATERIAL: BRASS

"VIBRAKRIMP"
 CLOSED ELECTRICAL BARREL W/OPEN VIBRATION SUPPORT
 LOOSE PIECE QUICK DISCONNECTS

| NON-PLATED PART NUMBER | TIN-PLATED PART NUMBER | AWG WIRE RANGE | FITS MALE TAB SIZE | STOCK THICK. | "L" MAX. | "B" ± 1/64 | "W" ± 1/64 | "D" ± .01 | "H" ± 1/64 | "E" ± 1/64 | REF. WIRE INSULATION DIAMETER |
|---------------------------|---------------------------|-------------------|-----------------------|-----------------|-------------|---------------|---------------|--------------|---------------|---------------|-------------------------------------|
| | AA-4176 | 22-18 | .250x.032 | .016 | .802 | 2/64 | .301 | .156 | 7/64 | .310 | .060/.125 |
| | BB-4177 | 16-14 | .250x.032 | .016 | .802 | 2/64 | .301 | .156 | 7/64 | .310 | .085/.145 |
| | P-4178 | 14-12 | .250x.032 | .016 | .802 | 2/64 | .301 | .156 | 7/64 | .310 | .100/.175 |
| | | | | | | | | | | | |
| | | | | | | | | | | | |
| | | | | | | | | | | | |
| | | | | | | | | | | | |
| | | | | | | | | | | | |
| | | | | | | | | | | | |
| | | | | | | | | | | | |

| | | | | | | | |
|---|--|---------------------|---------------|--|--|--------------------|----------|
| REVISE ONLY ON CAD SYSTEM | | CUSTOMER DRAWING | DRWG. BY EMF | molex ETC INC. PINELLAS PARK, FLA. 34665 U.S.A. | SHEET NO. | DATE | |
| TITLE VIBRAKRIMP - LOOSE .250 TAB- QUICK DISCONNECT CLOSED ELEC./OPEN VIB. SUP'T. | | | CHK'D. BY JM | | PART NO. SEE TABLE | DRWG. NO. CD-51002 | 01/10/95 |
| | | | APP'D. BY RWD | FILE NAME CD51002 | THIS DRAWING CONTAINS INFORMATION THAT IS PROPRIETARY TO MOLEX-ETC INC. AND SHOULD NOT BE USED WITHOUT WRITTEN PERMISSION. | | DIV. |
| | | | SCALE NO:NE | | | | SIZE A |