

**PLEASE CHECK WWW.MOLEX.COM FOR LATEST PART INFORMATION**

**Part Number:** [0038006269](#)  
**Status:** **Active**  
**Overview:** [kk](#)  
**Description:** 3.96mm (.156") Pitch KK® PC Board Connector, Right Angle, Nylon Connector, 5.0µm (200µ") Tin (Sn), 19 Circuits

**Documents:**

[Drawing \(PDF\)](#) [RoHS Certificate of Compliance \(PDF\)](#)  
[Product Specification PS-99020-0087 \(PDF\)](#)

**General**

Product Family	PCB Receptacles
Series	<a href="#">3215</a>
Application	Board-to-Board
Overview	<a href="#">kk</a>
Product Name	KK®

**Physical**

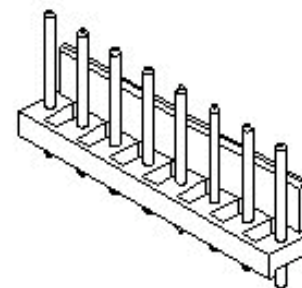
Circuits (Loaded)	19
Circuits (maximum)	19
Durability (mating cycles max)	25
Glow-Wire Compliant	No
Guide to Mating Part	No
Keying to Mating Part	None
Lock to Mating Part	No
Material - Metal	Phosphor Bronze
Material - Plating Mating	Gold
Material - Plating Termination	Gold
Material - Resin	Nylon
Number of Rows	1
Orientation	Right Angle
PC Tail Length (in)	0.150 In
PC Tail Length (mm)	3.81 mm
PCB Locator	Yes
PCB Retention	Yes
PCB Thickness Recommended (in)	0.062 In
PCB Thickness Recommended (mm)	1.57 mm
Packaging Type	Bag
Pitch - Mating Interface (in)	0.156 In
Pitch - Mating Interface (mm)	3.96 mm
Pitch - Term. Interface (in)	0.078 In
Pitch - Term. Interface (mm)	1.98 mm
Polarized to Mating Part	Yes
Polarized to PCB	Yes
Stackable	Yes
Surface Mount Compatible (SMC)	No
Temperature Range - Operating	0°C to +75°C
Termination Interface: Style	Through Hole

**Electrical**

Current - Maximum per Contact	5A
Grounding to PCB	No
Voltage - Maximum	250V

**Material Info**

Old Part Number	3215-HR19G1C
-----------------	--------------



Series

image - Reference only

**EU RoHS**

**ELV and RoHS  
Compliant**  
**REACH SVHC  
Not Reviewed**  
**Halogen-Free  
Status  
Not Reviewed**

**China RoHS**



**Need more information on product  
environmental compliance?**

Email [productcompliance@molex.com](mailto:productcompliance@molex.com)  
For a multiple part number RoHS Certificate of Compliance, [click here](#)

Please visit the [Contact Us](#) section for any non-product compliance questions.

**Search Parts in this Series**

[3215Series](#)

**Mates With**

[41661](#) , [41662](#) , [41671](#) , [41672](#) , [41711](#) ,  
[41772](#) , [41791](#) , [41792](#)

**Reference - Drawing Numbers**

Product Specification  
Sales Drawing

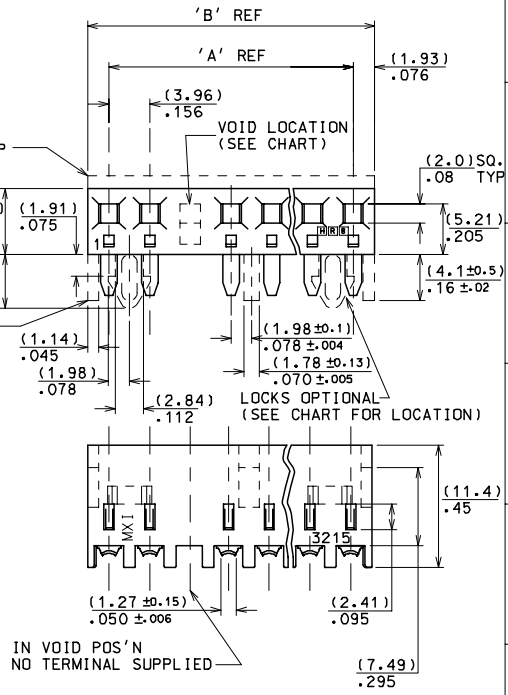
PS-99020-0087  
SDAE-3215-\*\*N\*\*-\*\*

This document was generated on 06/08/2010

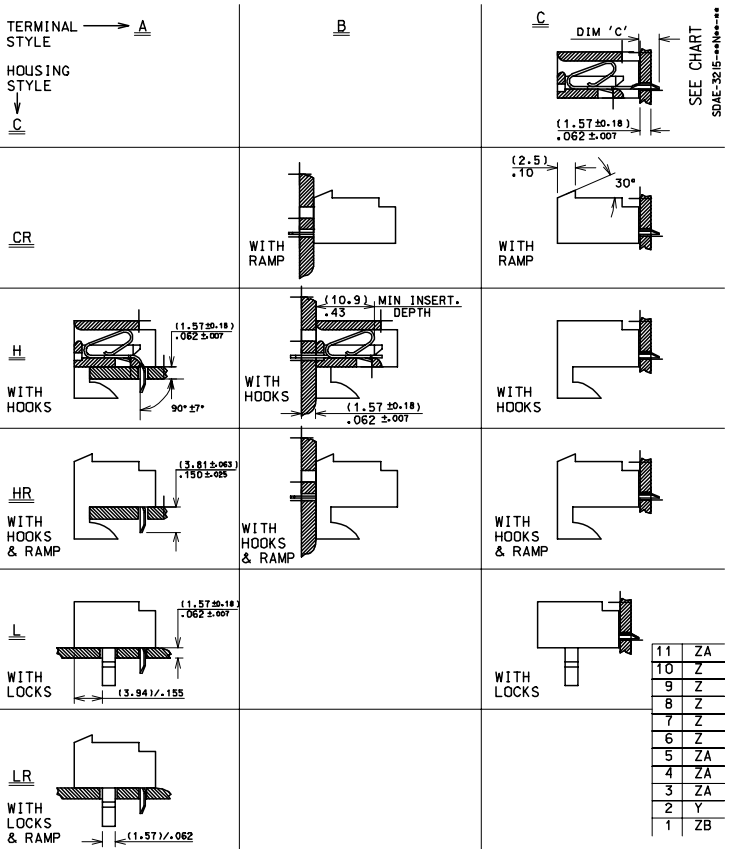
**PLEASE CHECK [WWW.MOLEX.COM](http://WWW.MOLEX.COM) FOR LATEST PART INFORMATION**

20	(75.29±0.41)	(79.15±0.51)
	2.964±.016	3.116±.020
19	(71.32±0.41)	(75.18±0.51)
	2.808±.016	2.960±.020
18	(67.36±0.36)	(71.22±0.46)
	2.652±.014	2.804±.018
17	(63.40±0.36)	(67.26±0.46)
	2.496±.014	2.648±.018
16	(59.44±0.36)	(63.29±0.46)
	2.340±.014	2.492±.018
15	(55.47±0.33)	(59.33±0.41)
	2.184±.012	2.336±.016
14	(51.51±0.33)	(55.37±0.41)
	2.028±.012	2.180±.016
13	(47.55±0.30)	(51.41±0.41)
	1.872±.012	2.024±.016
12	(43.59±0.25)	(47.45±0.36)
	1.716±.010	1.868±.014
11	(39.62±0.25)	(43.48±0.36)
	1.560±.010	1.712±.014
10	(35.66±0.25)	(39.52±0.31)
	1.404±.010	1.556±.012
9	(31.70±0.18)	(35.56±0.3)
	1.248±.007	1.400±.012
8	(27.74±0.18)	(31.60±0.3)
	1.092±.007	1.244±.012
7	(23.77±0.18)	(27.64±0.3)
	.936±.007	1.088±.012
6	(19.81±0.13)	(23.67±0.25)
	.780±.005	.932±.011
5	(15.85±0.13)	(19.71±0.25)
	.624±.005	.776±.010
4	(11.89±0.13)	(15.75±0.25)
	.468±.005	.620±.010
3	(7.92±0.13)	(11.79±0.25)
	.312±.005	.464±.010

No OF  
CCTS



- NOTES:
1. THESE ASSEMBLIES STACKABLE END TO END ON (3.96)/.156 CENTRE TO CENTRE PROGRESSION.
  2. FOR CHARTS & PANEL DRILLING DETAILS SEE SHEET 2 AND SUBSEQUENT SHEETS.
  3. TERMINAL PULL OUT FORCE- 4lbs MIN.
  4. TERMINALS ARE LUBRICATED WITH MXI-3.
  5. CONNECTORS FOR USE WITH (1.14)/.045 SQ. OR RD. PINS
  6. THIS PART CONFORMS TO PROD.SPEC.99020-0087



REVISION #P-DATE  
E2004-0792  
P-SHEAHAN 04/03/98

4 : 1 x  
G. HART 24/11/82  
M GOONEY 26/11/98  
MWILHITE 26/11/98  
SE32151 .DGN SEE CHART SDAE-3215-\*\*\*N\*\*\* I OF 11

25  
36  
1/2

11 ZA  
10 Z  
9 Z  
8 Z  
7 Z  
6 Z  
5 ZA  
4 ZA  
3 ZA  
2 Y  
1 ZB

ZB

SHT. 1 OF 1		MRI-SDAE-3215-***N***			
<b>MODIFICATION RECORD INDEX</b>					
ECN	ISS.	DATE	INIT.	SHTS. AFFECTED	DESCRIPTION OF MOD.
MESL-077	F	2 .12.82	GH	ALL	REDRAW
MEML-112	G	26.4 .83	GH	ALL	REVISION
MEML-594	H	6 .6 .83	GH	ALL	VARIOUS
MEML-608	J	21.6 .83	GH	ALL	VARIOUS
MEML-681	K	31.8 .83	MAL	ALL	VARIOUS
MEML-901	L	25.6 .84	MC	ALL	VARIOUS
MEML-382	M	2 .10.84	MC	ALL	VARIOUS
MEML-509	N	29.5 .85	MC	ALL	VARIOUS
MEML-510	P	31.5 .85	MC	ALL	VARIOUS
MEML-1162	R	25.11.85	JP	ALL	VARIOUS
MEML-617	S	9 .1.86	MC	ALL	VARIOUS
MEML-625	T	20.1.86	MC	ALL	VARIOUS
E10010	U	11.1.91	POB	ALL	VARIOUS
E10018	V	18.1.91	POB	ALL	VARIOUS
E50203	W	08.12.94	JS	ALL	VARIOUS
E90137	Y	1.11.98	TM	ALL	REDRAWN ON CAD
E2001-0463	Z	1.11.00	MF	1,3,4,5,6,7,8,9,10,11	UPDATED BORDER
E2003-0992	ZA	03.05.29	PS	1	NEW PROD.SPEC.99020-0087 ADDED
MOLEX EUROPE			REVISE ONLY ON CAD SYSTEM		
THIS DRAWING CONTAINS INFORMATION THAT IS PROPRIETARY TO MOLEX INC. A SHOULD NOT BE USED WITHOUT WRITTEN PERMISSION			CROQUIS FILENAME		TITLE
NF0028			SE32151 . DGN		ZA

13		12		11		10		9		8		7		6		5		4		3		2		1				
PART NO.	ENG NO.	NO. OF CCTS	LOCK RAMP	VOID CCT	POS 'N	CENTRE LOCATED BETWEEN CCT NO'S	PART NO.	ENG NO.	NO. OF CCTS	LOCK RAMP	VOID CCT	POS 'N	CENTRE LOCATED BETWEEN CCT NO'S	PART NO.	ENG NO.	NO. OF CCTS	LOCK RAMP	VOID CCT	POS 'N	CENTRE LOCATED BETWEEN CCT NO'S	PART NO.	ENG NO.	NO. OF CCTS	LOCK RAMP	VOID CCT	POS 'N	CENTRE LOCATED BETWEEN CCT NO'S	
38-00-6193	AE-3215-H3G3C	3	NO	NONE	—	—	38-00-6213	AE-3215-HR3G3C	3	YES	NONE	—	—	38-00-6234	AE-3215-L4G3C	4	NO	NONE	1&2 3&4	—	—	38-00-6253	AE-3215-HR3G1C	3	YES	NONE	—	
↑ -6194	↑ -H4G3C	4	↑	↑	↑	—	↑ -6214	↑ -HR4G3C	4	↑	↑	↑	—	↑ -6235	↑ -L5G3C	5	↑	↑	1&2 4&5	—	—	↑ -6254	↑ -HR4G1C	4	↑	↑	↑	—
-6195	-H5G3C	5				—	-6215	-HR5G3C	5				—	-6236	-L6G3C	6			1&2 5&6	—	—	-6255	-HR5G1C	5				—
-6196	-H6G3C	6				—	-6216	-HR6G3C	6				—	-6237	-L7G3C	7			1&2 6&7	—	—	-6256	-HR6G1C	6				—
-6197	-H7G3C	7				—	-6217	-HR7G3C	7				—	-6238	-L8G3C	8			1&2 7&8	—	—	-6257	-HR7G1C	7				—
-6198	-H8G3C	8				4&5	-6218	-HR8G3C	8				4&5	-6239	-L9G3C	9			1&2 5&6 8&9	—	—	-6258	-HR8G1C	8			4&5	—
-6199	-H9G3C	9				4&5	-6219	-HR9G2C	9				4&5	-6240	-L10G3C	10			1&2 5&6 9&10	—	—	-6259	-HR9G1C	9			4&5	—
-6200	-H10G3C	10				5&6	-6220	-HR10G2C	10				5&6	-6241	-L11G3C	11			1&2 6&7 10&11	—	—	-6260	-HR10G1C	10			5&6	—
-6201	-H11G3C	11				5&6	-6221	-HR11G3C	11				5&6	-6242	-L12G3C	12			1&2 6&7 11&12	—	—	-6261	-HR11G1C	11			5&6	—
-6202	-H12G3C	12				4&5 8&9	-6222	-HR12G3C	12				4&5 8&9	-6243	-L13G3C	13			1&2 6&7 12&13	—	—	-6262	-HR12G1C	12			4&5 8&9	—
-6203	-H13G3C	13				4&5 9&10	-6223	-HR13G3C	13				4&5 9&10	-6244	-L14G3C	14			1&2 7&8 13&14	—	—	-6263	-HR13G1C	13			4&5 9&10	—
-6204	-H14G3C	14				5&6 9&10	-6224	-HR14G3C	14				5&6 9&10	-6245	-L15G3C	15			1&2 7&8 14&15	—	—	-6264	-HR14G1C	14			5&6 9&10	—
-6205	-H15G3C	15				5&6 10&11	-6225	-HR15G3C	15				5&6 10&11	-6246	-L16G3C	16			1&2 7&8 15&16	—	—	-6265	-HR15G1C	15			5&6 10&11	—
-6206	-H16G3C	16				6&7 11&12	-6226	-HR16G3C	16				6&7 11&12	-6247	-L17G3C	17			1&2 7&8 16&17	—	—	-6266	-HR16G1C	16			6&7 11&12	—
-6207	-H17G3C	17				6&7 11&12	-6227	-HR17G3C	17				6&7 11&12	-6248	-L18G3C	18			1&2 8&9 17&18	—	—	-6267	-HR17G1C	17			6&7 11&12	—
-6208	-H18G3C	18				6&7 10&11 15&16	-6228	-HR18G3C	18				6&7 10&11 15&16	-6249	-L19G3C	19			1&2 8&9 18&19	—	—	-6268	-HR18G1C	18			6&7 10&11 15&16	—
-6209	-H19G3C	19				5&6 10&11 15&16	-6229	-HR19G3C	19				5&6 10&11 15&16	38-00-6250	AE-3215-L20G3C	20	NO	NONE	1&2 9&10 19&20	—	—	-6269	-HR19G1C	19			5&6 10&11 15&16	—
38-00-6210	AE-3215-H20G3C	20	NO	NONE	—	5&6 10&11 15&16	38-00-6230	AE-3215-HR20G3C	20	YES	NONE	—	5&6 10&11 15&16	38-00-6233	AE-3215-HR3G3C-2	3	YES	2	—	—	—	38-00-6270	AE-3215-HR20G1C	20	YES	NONE	—	5&6 10&11 15&16

HOUSING.  
STYLE- HR

TERMINAL.  
STYLE- C  
DIM 'C' - (3.17±0.5) / .125 ± .020  
DRILLING DETAIL 'D'  
SEE SHEET 2

HOUSING.  
STYLE- HR

TERMINAL.  
STYLE- C  
DRILLING DETAIL 'D'

HOUSING.  
STYLE- L

TERMINAL.  
STYLE- C  
DRILLING DETAIL 'D'

HOUSING.  
STYLE- HR

TERMINAL.  
STYLE- C  
DRILLING DETAIL 'D'

**MATERIAL:**  
HOUSING- NYLON, 94V-2, COLOUR- NATURAL  
TERMINAL- PHOS. BR, PLATING-  $\frac{(0.0013)}{.00005} / \frac{(0.0015)}{.00006}$  GOLD  
OVER  $\frac{(0.0013)}{.00005} / \frac{(0.002)}{.00008}$  NICKLE

**MATERIAL:**  
HOUSING- NYLON, 94V-2, COLOUR- NATURAL  
TERMINAL- PHOS. BR, PLATING-  $\frac{(0.0025)}{.00001} / \frac{(0.0025)}{.00002}$  GOLD  
OVER  $\frac{(0.0028)}{.00003} / \frac{(0.0015)}{.00006}$  NICKLE

**NOTES:**  
1. TERMINAL MUST MEET MOLEX SOLDERABILITY SPEC. NO. 152.

SEE SHEET 1 EC NO: INDRAK 24/10/00 CHK: / / / APPR: / / /	QUALITY SYMBOLS	GENERAL TOLERANCES: (UNLESS SPECIFIED)		SCALE: 1:1	DESIGN UNITS: mm	THIRD ANGLE PROJECTION	DIMENSIONS: mm INCH mm ONLY	SHT	REV
	MAJOR CRITICAL	4 PLACES ±0.1	±.1	±.1	±.1	±.1	±.1		
		3 PLACES ±0.1	±.1	±.1	±.1	±.1	±.1		
		2 PLACES ±0.1	±.1	±.1	±.1	±.1	±.1		
		1 PLACE ±0.1	±.1	±.1	±.1	±.1	±.1		
		ANGULAR: ± 1/2 °		DRAWN BY & DATE: G. HART 24/11/82		TITLE: CONNECTOR, K-K (3.96) / .156 WITH OR WITHOUT LOCKING WITH P.C. TAIL TERMINALS			
		DRAFT WHERE APPLICABLE MUST REMAIN WITHIN DIMENSIONS		CHECKED BY & DATE: M GOONEY 26/11/98		MATERIAL NO. MOLEX INCORPORATED			
				APPROVED BY & DATE: MWILHITE 26/11/98		DRAWING NO. SDAE-3215-***N***			
				CAD FILENAME: SE321510.DGN		SHEET NO. 10 OF			
				THIS DRAWING CONTAINS INFORMATION THAT IS PROPRIETARY TO MOLEX INCORPORATED AND SHOULD NOT BE USED WITHOUT WRITTEN PERMISSION.					

SEE SHEET  
DRAWING NO: SDAE-3215-\*\*\*N\*\*\*