

PLEASE CHECK WWW.MOLEX.COM FOR LATEST PART INFORMATION

Part Number: **0002095100**
Status: **Active**
Overview: [standard_093](#)
Description: 2.36mm (.093") Diameter, Standard .093" Pin and Socket Crimp Terminal, Series 1189, Female, with Gold (Au) Plated Brass Contact, 14-20 AWG, Reel

Documents:

[Drawing \(PDF\)](#) [RoHS Certificate of Compliance \(PDF\)](#)
[Product Specification PS-02-09 \(PDF\)](#)

General

Product Family	Crimp Terminals
Series	1189
Crimp Quality Equipment	Yes
Overview	standard_093
Product Name	Standard .093"

Physical

Gender	Female
Material - Metal	Brass
Material - Plating Mating	Gold
Material - Plating Termination	Nickel
Packaging Type	Reel
Plating min: Mating (µin)	15
Plating min: Mating (µm)	0.38
Plating min: Termination (µin)	30
Plating min: Termination (µm)	0.76
Termination Interface: Style	Crimp or Compression
Wire Insulation Diameter	1.65-4.06mm (.065-.160")
Wire Size AWG	14, 16, 18, 20
Wire Size mm ²	N/A

Material Info

Old Part Number 1189-A(P550)

Reference - Drawing Numbers

Product Specification [PS-02-09](#)
 Sales Drawing [SD-1189*](#)

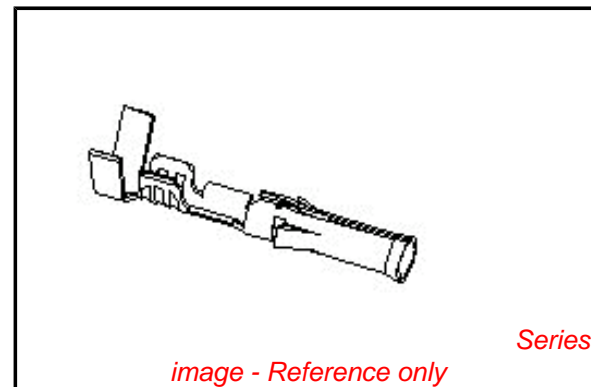


image - Reference only

EU RoHS

**ELV and RoHS
Compliant**
**REACH SVHC
Contains SVHC: No**
**Halogen-Free
Status**

China RoHS



**Need more information on product
environmental compliance?**

Email productcompliance@molex.com
 For a multiple part number RoHS Certificate of Compliance, [click here](#)

Please visit the [Contact Us](#) section for any non-product compliance questions.

Search Parts in this Series

[1189Series](#)

Application Tooling | [FAQ](#)

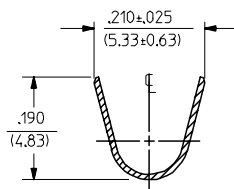
Tooling specifications and manuals are found by selecting the products below. Crimp Height Specifications are then contained in the Application Tooling Specification document.

Global

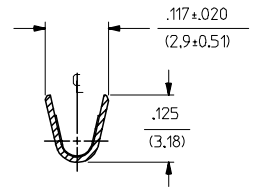
Description	Product #
Mini-Mac™ Applicator	0638927100
Mini-Mac™ Applicator	0638927300
Insertion Tool	0011020003
Extraction Tool	0011030006
Terminator Die	0011402001
Hand Crimper - DISTRIBUTION ONLY	0638111000

PLEASE CHECK WWW.MOLEX.COM FOR LATEST PART INFORMATION

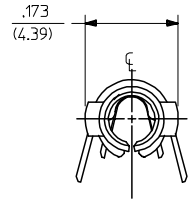
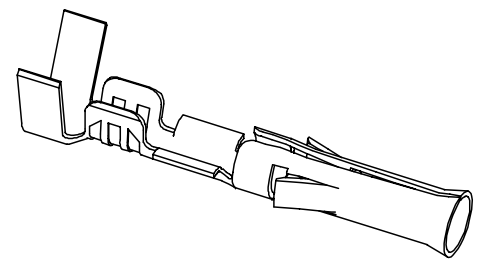
PART NO.	ENG. NO.
02-09-1104	1189-A(P901L)
02-09-1102	1189-A(P901)
02-09-5111	1189-A(P591L)
02-09-5102	1189-A(P591)
02-09-5106	1189-A(P550)L
02-09-5100	1189-A(P550)



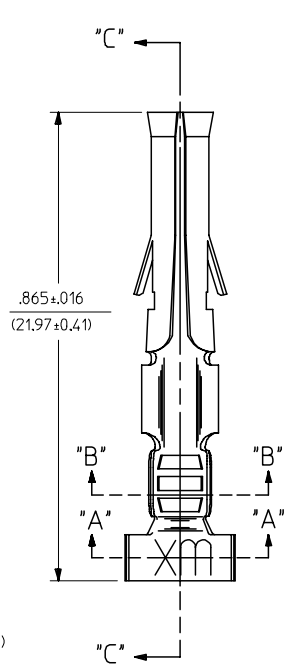
SECT. "A-A"



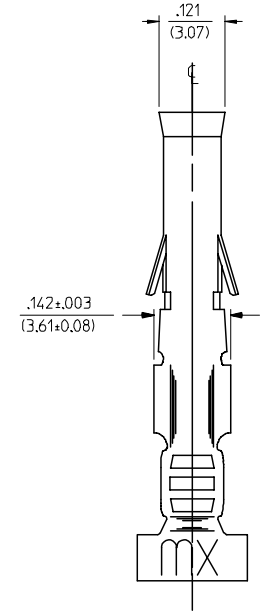
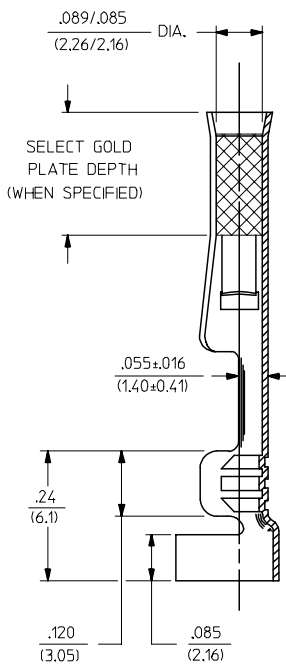
SECT. "B-B"



LEGEND
 1189-A(****)*
 * - FINISH CODE
 ** - FORM
 *** - BLANK=CHAIN, L=LOOSE
 **** - PREPLATE, ***** - POSTPLATE



SECT. "C-C"



- NOTES:
- MATERIAL: CARTRIDGE BRASS, ALLOY #C26000, .010/(0.25) THICK
 - FINISH CODES:
 - 901 HOT TIN DIP .000020/(0.00051) MIN.
 - 591 SELECT GOLD PLATE .000050/(0.00127) MIN. IN CONTACT AREA, OVER .000050/(0.00127) MIN. NICKEL OVERALL WITH .000010/(0.00025) MAX. GOLD FLASH OVERALL.
 - 550 SELECT GOLD PLATE .000015/(0.00038) MIN. IN CONTACT AREA, OVER .000030/(0.00076) MIN. NICKEL OVERALL WITH .000010/(0.00025) MAX. GOLD FLASH OVERALL.
 - *THE PRIMARY SHIPPING CARTON WILL BE LABELED, "COMPLIANT TO RoHS DIRECTIVE 2002/95/EC AND ELV ANNEX OF DIRECTIVE 2000/53/EC", AND CARTONS WITHOUT THIS LABEL MAY CONTAIN PRODUCT WITH TIN-LEAD.
 - THIS PART CONFORMS TO PROD. SPEC. 02-09.
 - PACKAGING INFORMATION: NOT AVAILABLE
 - TERMINAL FOR USE WITH .093/(2.36) SERIES HOUSINGS AND WILL ACCEPT 14 THRU 20 AWG WIRE.
 - INSERTION FORCE: 3.5 LBS. MAX. WHEN TERMINAL IS INSERTED INTO AN .093 SERIES HOUSING.
 - RETENTION: 20 LBS. MIN. FROM HOUSING.

ADDED PARTS FC NO: UCP2006-1061 DRAWN: PETERSON 2005/11/18 CHKD: FSI TH 2005/11/29 APPR: FSI TH 2005/12/02	QUALITY SYMBOLS ▽=0 ▽=0	GENERAL TOLERANCES (UNLESS SPECIFIED)		DIMENSION STYLE IN/MM		SCALE 6:1	DESIGN UNITS INCH	THIRD ANGLE PROJECTION	
		mm	INCH	DRAWN BY GEP	DATE 1987/10/26	TITLE CRIMP TERMINAL, FEMALE, .093/(2.36) DIA. 14-20 AWG			
C1	DESCRIPTION	4 PLACES ± --- ± ---	± .010	CHECKED BY RW	DATE 1987/10/26	MATERIAL NO. SD-1189-* DOCUMENT NO. SHEET NO. 1 OF 1			
		3 PLACES ± --- ± ---	± .014	APPROVED BY RAS	DATE 1987/10/26				
DRAFT WHERE APPLICABLE MUST REMAIN WITHIN DIMENSIONS		ANGULAR ±1/2°		SEE CHART		THIS DRAWING CONTAINS INFORMATION THAT IS PROPRIETARY TO MOLEX INCORPORATED AND SHOULD NOT BE USED WITHOUT WRITTEN PERMISSION			