

**PLEASE CHECK WWW.MOLEX.COM FOR LATEST PART INFORMATION**

**Part Number:** [0002092171](#)  
**Status:** **Active**  
**Overview:** [standard\\_093](#)  
**Description:** 2.36mm (.093") Diameter, Standard .093" Pin and Socket Crimp Terminal, Series 1190, Male, with Tin (Sn) Plated Brass Contact, 14-18 AWG, Large Insulation Crimp, Bag

**Documents:**

[Drawing \(PDF\)](#) [RoHS Certificate of Compliance \(PDF\)](#)

**General**

Product Family	Crimp Terminals
Series	<a href="#">42138</a>
Crimp Quality Equipment	Yes
Overview	<a href="#">standard_093</a>
Product Name	Standard .093"

**Physical**

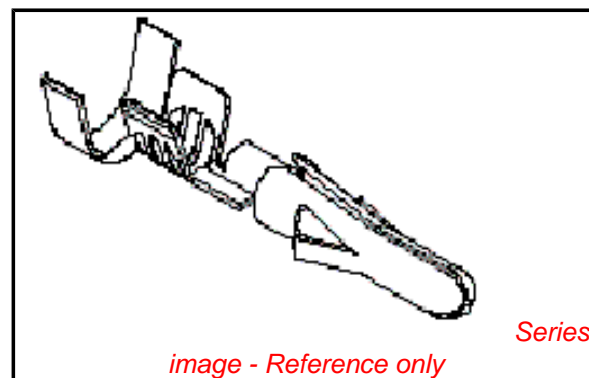
Gender	Male
Material - Metal	Brass
Material - Plating Mating	Tin
Material - Plating Termination	Tin
Packaging Type	Bag
Plating min: Mating (µin)	20
Plating min: Mating (µm)	0.50
Plating min: Termination (µin)	20
Plating min: Termination (µm)	0.50
Termination Interface: Style	Crimp or Compression
Wire Insulation Diameter	4.57mm (.180") max.
Wire Size AWG	14, 16, 18
Wire Size mm <sup>2</sup>	N/A

**Material Info**

Old Part Number	42138-(P901)L
-----------------	---------------

**Reference - Drawing Numbers**

Sales Drawing	SD-42138-*
---------------	------------



**EU RoHS**

**ELV and RoHS  
Compliant**  
**REACH SVHC  
Not Reviewed**  
**Halogen-Free  
Status  
Not Reviewed**

**China RoHS**



**Need more information on product  
environmental compliance?**

Email [productcompliance@molex.com](mailto:productcompliance@molex.com)  
 For a multiple part number RoHS Certificate of Compliance, [click here](#)

Please visit the [Contact Us](#) section for any non-product compliance questions.

**Search Parts in this Series**

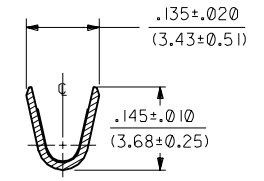
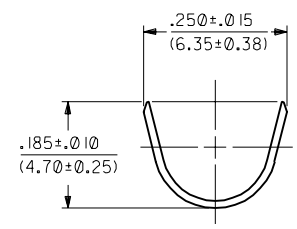
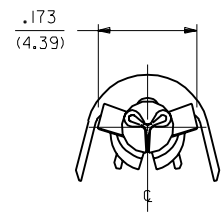
[42138Series](#)

**Use With**

[2629](#) , [1619](#) Plug or Receptacle Housing,  
[1545](#) Plug or Receptacle Housing,  
[1396](#) Plug or Receptacle Housing,  
[1490](#) Plug or Receptacle Housing,  
[1261](#) Plug or Receptacle Housing,  
[1292](#) Plug or Receptacle Housing, [1360](#)  
 Plug or Receptacle Housing, [1375](#) Plug  
 or Receptacle Housing, [2163](#) Plug or  
 Receptacle Housings

PART NO.	ENG. NO.	
02-09-2170	42138-(P90)I	
02-09-2171	42138-(P90)IL	
02-09-2172	42138-(P90)I	<b>OBSOLETE</b>
02-09-2173	42138-(P90)IL	
	-	
	-	

42138



**LEGEND**

42138-\*(\*\*\*\*)\*

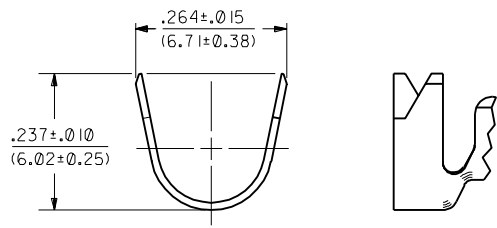
CRIMP STYLE  
BLANK="A"  
I="B"

FORM  
BLANK=CHAIN  
L=LOOSE

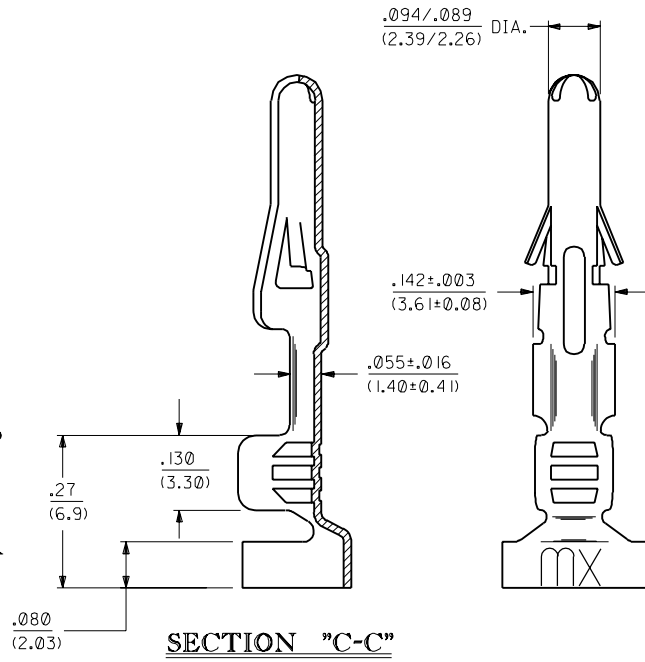
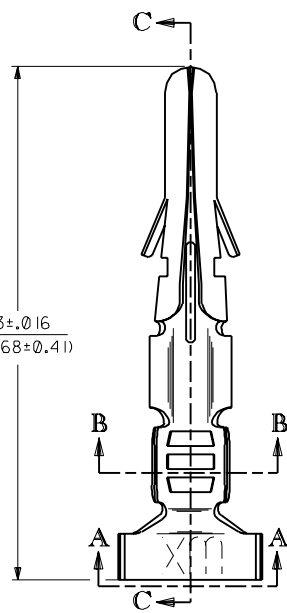
P=PREPLATE  
BLANK=POSTPLATE

FINISH CODE

FINISHES, PER ES-88:  
901 HOT TIN DIP .000020/(0.0005) MIN.



**VIEW "A-A"**  
CRIMP STYLE "B"



**SECTION "C-C"**

- NOTES:
- TERMINAL FOR USE WITH .093/(2.36) SERIES HOUSINGS AND WILL ACCEPT 14 THRU 18 AWG WIRE.
  - INSULATION CRIMP STYLE "A" ACCEPTS A MAX. INSULATION DIA. OF .180/(4.57). INSULATION CRIMP STYLE "B" IS INTENDED FOR DOUBLE CRIMP OF TWO 18 AWG WIRES; ONE WITH A MAX. INSULATION DIA. OF .170/(4.32), THE OTHER A MAX. INSULATION DIA. OF .110/(2.79).

MATERIAL:  
CARTRIDGE BRASS, ALLOY #C26000,  
.013/(0.33) THICK, SPRING TEMPER.



H	OBSOLETE P/N UCR2002-0270 COMERCI 01/10/99
GI	REVISED EOR U3 0507 STAMBAUGH 99-2-9
G	REVISE PER EOR U3 0507 CXC 4/1/93 RW
F	REVISE PER EOR U3 0159 CXC 2/9/93 RW
E	REVISE PER EOR U2 0674 CXC 4/28/92 RW
D	REVISE & REDRAW PER EOR U2 0081 CXC 2/21/92 RW

DIMENSIONS SHOWN (METRIC) INCH UNLESS OTHERWISE SPECIFIED TOLERANCES ANGULAR ± 1/2°		MFG. SH. REV. LTR. REVISIONS									
<table border="1"> <tr> <th>INCH</th> <th>METRIC</th> </tr> <tr> <td>3 PLACE ± .010</td> <td>---</td> </tr> <tr> <td>2 PLACE ± .014</td> <td>± 0.25</td> </tr> <tr> <td>1 PLACE ---</td> <td>± 0.35</td> </tr> </table>		INCH	METRIC	3 PLACE ± .010	---	2 PLACE ± .014	± 0.25	1 PLACE ---	± 0.35	<input checked="" type="checkbox"/> = 0 <input checked="" type="checkbox"/> = 0 <b>REVISE ONLY ON CAD SYSTEM</b>	
INCH	METRIC										
3 PLACE ± .010	---										
2 PLACE ± .014	± 0.25										
1 PLACE ---	± 0.35										
DRAFT WHERE APPLICABLE MUST REMAIN WITHIN DIMENSIONS		TITLE CRIMP TERMINAL, MALE .093/(2.36) DIA. 14-18 AWG W/LARGE INSUL.									
<table border="1"> <tr> <td>DRWG. NO.</td> <td>DRWG. NO.</td> </tr> <tr> <td>SEE CHART</td> <td>SD-42138-*</td> </tr> </table>		DRWG. NO.	DRWG. NO.	SEE CHART	SD-42138-*	<table border="1"> <tr> <td>FILE NAME S42138X1 D01</td> <td>SHEET NO. 1 of 1</td> <td>DATE 2/21/92</td> </tr> </table>		FILE NAME S42138X1 D01	SHEET NO. 1 of 1	DATE 2/21/92	
DRWG. NO.	DRWG. NO.										
SEE CHART	SD-42138-*										
FILE NAME S42138X1 D01	SHEET NO. 1 of 1	DATE 2/21/92									
<table border="1"> <tr> <td>DRW. BY GXC</td> <td>CHK'D. BY RW</td> </tr> <tr> <td>APP'D. BY RS</td> <td>SCALE 6 : 1</td> </tr> </table>		DRW. BY GXC	CHK'D. BY RW	APP'D. BY RS	SCALE 6 : 1	<table border="1"> <tr> <td>THIS DRAWING CONTAINS INFORMATION THAT IS PROPRIETARY TO MOLEX INC. AND SHOULD NOT BE USED WITHOUT WRITTEN PERMISSION.</td> <td>DIV. CP</td> <td>SIZE C</td> </tr> </table>		THIS DRAWING CONTAINS INFORMATION THAT IS PROPRIETARY TO MOLEX INC. AND SHOULD NOT BE USED WITHOUT WRITTEN PERMISSION.	DIV. CP	SIZE C	
DRW. BY GXC	CHK'D. BY RW										
APP'D. BY RS	SCALE 6 : 1										
THIS DRAWING CONTAINS INFORMATION THAT IS PROPRIETARY TO MOLEX INC. AND SHOULD NOT BE USED WITHOUT WRITTEN PERMISSION.	DIV. CP	SIZE C									

42138