

PLEASE CHECK WWW.MOLEX.COM FOR LATEST PART INFORMATION

Part Number: [0002092105](#)
Status: **Active**
Description: Board-In Crimp Terminal, Series 4706, Male, Tin (Sn) Plated Brass Contact, 16-18 AWG, 11.20mm (.440") Terminal Progression

Documents:

[Drawing \(PDF\)](#) [RoHS Certificate of Compliance \(PDF\)](#)
[Product Specification PS-4706-001 \(PDF\)](#)

General

Product Family	Crimp Terminals
Series	4706
Comments	Progression 11.20 (.440)
Crimp Quality Equipment	Yes
Product Name	Board-In Stand Alone Terminal

Physical

Gender	Male
Material - Metal	Brass
Material - Plating Mating	Tin
Material - Plating Termination	Tin
Packaging Type	Reel
Plating min: Mating (µin)	100
Plating min: Mating (µm)	2.50
Plating min: Termination (µin)	100
Plating min: Termination (µm)	2.50
Termination Interface: Style	Crimp or Compression
Wire Insulation Diameter	3.05mm (.120") max.
Wire Size AWG	16, 18
Wire Size mm ²	N/A

Material Info

Old Part Number	4706-(P909)
-----------------	-------------

Reference - Drawing Numbers

Product Specification	PS-4706-001
Sales Drawing	SD-4706

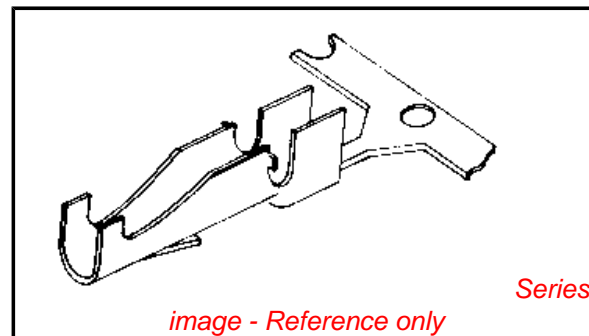


image - Reference only

EU RoHS

ELV and RoHS Compliant
REACH SVHC Contains SVHC: No

China RoHS



Halogen-Free Status
Halogen-Free

Need more information on product environmental compliance?

Email productcompliance@molex.com
 For a multiple part number RoHS Certificate of Compliance, [click here](#)

Please visit the [Contact Us](#) section for any non-product compliance questions.

Search Parts in this Series

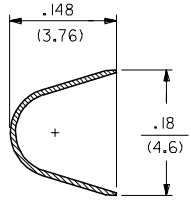
4706Series

Application Tooling | FAQ

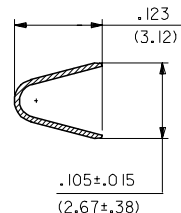
Tooling specifications and manuals are found by selecting the products below. Crimp Height Specifications are then contained in the Application Tooling Specification document.

Global

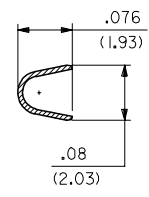
Description	Product #
Hand Crimper	0011010065
Terminator Die	0011402042
Terminator Die - OVERLAP INSULATION CRIMP	0011402044
Mini-Mac™ Applicator	0638934000



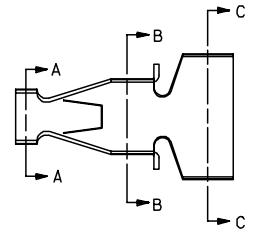
SECTION C-C



SECTION B-B



SECTION A-A



NOTES:

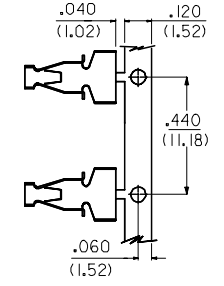
1. MATERIAL: 260 BRASS .008 THK
2. TERMINAL 4706-(***)* ACCEPTS 16 TO 18 AWG WIRE WITH INSULATION DIA OF .120 MAX
3. TERMINALS CONFORM TO SOLDERABILITY SPEC 152
4. PRODUCT SPECIFICATION: PS-4706-001

4706-*(***)*
 BLANK=SEE SHT 1
 3=SEE SHEET 2
 FORM
 BLANK=CHAIN
 L=LOOSE

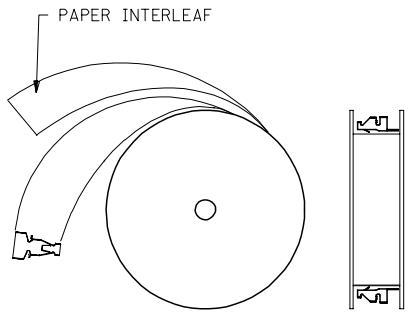
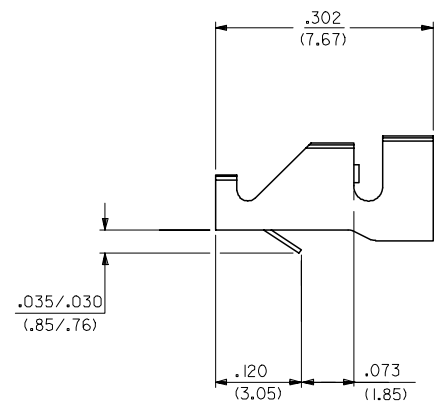
PLATING PER SDES-88

*(P909) OVERALL HOT TIN DIP: 2.54 MICROMETERS MIN

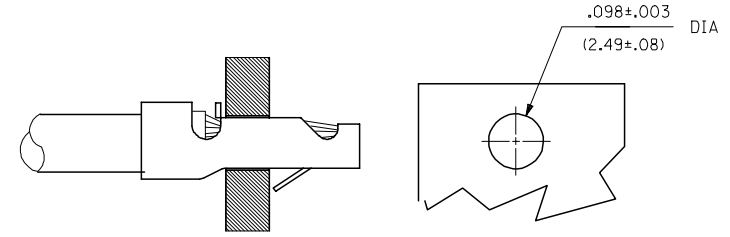
*THE PRIMARY SHIPPING CARTON WILL BE LABELED "COMPLIANT TO ROHS DIRECTIVE 2002/95/EC AND ELV ANNEX II OF DIRECTIVE 2000/53/EC." CARTONS WITHOUT THIS LABEL MAY CONTAIN PRODUCT WITH TIN-LEAD PLATING.



CARRIER DETAIL



WINDING SPEC



RECOMMENDED PC BOARD

4706-(***)*

EDP NO.	ENG NO		
02-09-2105	4706-(P909)		
- -	-()		
- -	-()		

CHANGE TO ME10 EC NO: UCP2005-0966 DRAWN/ADRATNOL 2004/11/19 CHKD: SAMIEC 2004/07/05 APPR: MMARGULIS 2004/11/05	QUALITY SYMBOLS ▽=0 ▽=0	DESCRIPTION J1
---	-------------------------------	-------------------

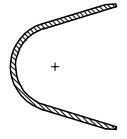
GENERAL TOLERANCES (UNLESS SPECIFIED)	
mm	INCH
4 PLACES ± .010	± .0004
3 PLACES ± .014	± .0005
2 PLACES ± 0.25	± .010
1 PLACE ± 0.36	± .014
ANGULAR ±1/2°	
DRAFT WHERE APPLICABLE MUST REMAIN WITHIN DIMENSIONS	

DRAWN BY SAMIEC	DATE 02/25/92
CHECKED BY PATEL	DATE 02/25/92
APPROVED BY LENZ	DATE 02/25/92

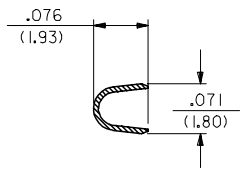
DIMENSION STYLE IN/MM	.062 SCALE ---	DESIGN UNITS INCH	THIRD ANGLE PROJECTION
TITLE STRAIN RELIEF TERMINAL		MATERIAL NO. DOCUMENT NO. SD-4706	
MATERIAL NO. SD-4706		SHEET NO. 1 OF 2	
THIS DRAWING CONTAINS INFORMATION THAT IS PROPRIETARY TO MOLEX INCORPORATED AND SHOULD NOT BE USED WITHOUT WRITTEN PERMISSION			

13 12 11 10 9 8 7 6 5 4 3 2 1

J
I
H
G
F
E
D
C
B
A



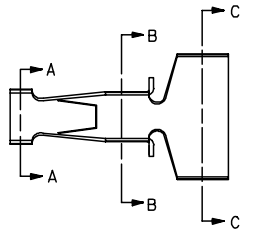
SECTION C-C



SECTION B-B



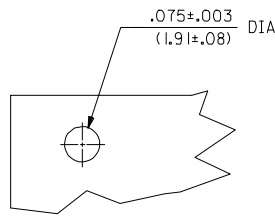
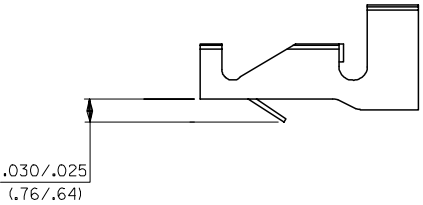
SECTION A-A



NOTES:

1. THIS PART IS THE SAME AS SHEET 1 EXCEPT AS SHOWN
2. MATERIAL: 260 BRASS .006 THK
3. FINISH: (909) * OVERALL HOT TIN DIP: 2.54 MICROMETERS MIN.
4. TERMINAL 4706-3(***)* ACCEPTS 18 TO 24 AWG WIRE WITH INSULATION DIA OF .120 MAX

*THE PRIMARY SHIPPING CARTON WILL BE LABELED 'COMPLIANT TO RoHS DIRECTIVE 2002/95/EC AND ELV ANNEX II OF DIRECTIVE 2000/53/EC.' CARTONS WITHOUT THIS LABEL MAY CONTAIN PRODUCT WITH TIN-LEAD PLATING.



RECOMMENDED PC BOARD
.062 THK

4706-3(***)*			
EDP NO.	ENG NO.		
02-07-2101	4706-3(P909)		

CHANGE TO ME10 EC NO: UCP2005-0966 DRW:ADRATNOL 2004/11/19 CHKD: SAMIEC 2004/11/19 APPR: YMARGULIS 2004/11/04	QUALITY SYMBOLS	GENERAL TOLERANCES (UNLESS SPECIFIED)	DIMENSION STYLE IN/MM	SCALE ---	DESIGN UNITS INCH	THIRD ANGLE PROJECTION
	▽=0	mm INCH	DRAWN BY DATE			TITLE
	▽=0	4 PLACES ± --- ± ---	SAMIEC 02/25/92			STRAIN RELIEF TERMINAL
		3 PLACES ± --- ± .010	CHECKED BY DATE			
	2 PLACES ± 0.25 ± .014	PATEL 02/25/92				
	1 PLACE ± 0.36 ± ---	APPROVED BY DATE				
	ANGULAR ±1/2°	LENZ 02/25/92				
	DRAFT WHERE APPLICABLE MUST REMAIN WITHIN DIMENSIONS	MATERIAL NO.	SIZE C	THIS DRAWING CONTAINS INFORMATION THAT IS PROPRIETARY TO MOLEX INCORPORATED AND SHOULD NOT BE USED WITHOUT WRITTEN PERMISSION	DOCUMENT NO. SD-4706	SHEET NO. 2

12 11 10 9 8 7 6 5 4 3 2 1