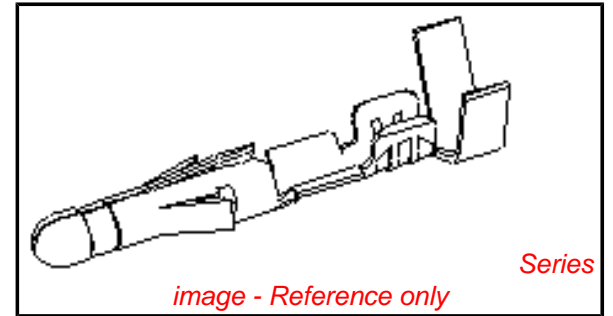


PLEASE CHECK WWW.MOLEX.COM FOR LATEST PART INFORMATION

Part Number: **0002092103**
Status: **Active**
Overview: standard_093
Description: 2.36mm (.093") Diameter, Standard .093" Pin and Socket Crimp Terminal, Series 1190, Male, with Tin (Sn) Plated Brass Contact, 14-20 AWG, Bag

Documents:

[Drawing \(PDF\)](#) [RoHS Certificate of Compliance \(PDF\)](#)
[Product Specification PS-02-09 \(PDF\)](#)



General

Product Family	Crimp Terminals
Series	<u>1190</u>
Crimp Quality Equipment	Yes
Overview	<u>standard_093</u>
Product Name	Standard .093"
Physical	
Durability (mating cycles max)	25
Gender	Male
Material - Metal	Brass
Material - Plating Mating	Tin
Material - Plating Termination	Tin
Packaging Type	Bag
Plating min: Mating (µin)	20
Plating min: Mating (µm)	0.50
Plating min: Termination (µin)	20
Plating min: Termination (µm)	0.50
Termination Interface: Style	Crimp or Compression
Wire Insulation Diameter	1.65-4.06mm (.065-.160")
Wire Size AWG	14, 16, 18, 20
Wire Size mm ²	N/A

Material Info

Old Part Number 1190-(P901)L

Reference - Drawing Numbers

Packaging Specification	PK-1190-001
Product Specification	PS-02-09
Sales Drawing	SD-1190-*

EU RoHS

**ELV and RoHS
Compliant**
**REACH SVHC
Contains SVHC: No**

China RoHS



**Halogen-Free
Status**

Halogen-Free

**Need more information on product
environmental compliance?**

Email productcompliance@molex.com
 For a multiple part number RoHS Certificate of Compliance, [click here](#)

Please visit the [Contact Us](#) section for any non-product compliance questions.

Search Parts in this Series

1190Series

Use With

1619 Plug or Receptacle Housing, 1545 Plug or Receptacle Housing, 1396 Plug or Receptacle Housing, 1490 Plug or Receptacle Housing, 2629 Plug or Receptacle Crimp Housings, 1261 Plug or Receptacle Housing, 1292 Plug or Receptacle Housing, 1360 Plug or Receptacle Housing, 1375 Plug or Receptacle Housing, 3191 Plug or Receptacle Housing, 2163 Plug or Receptacle Housings

Application Tooling | FAQ

Tooling specifications and manuals are found by selecting the products below. Crimp Height Specifications are then contained in the Application Tooling Specification document.

Global

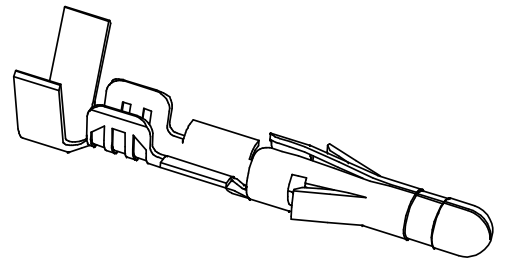
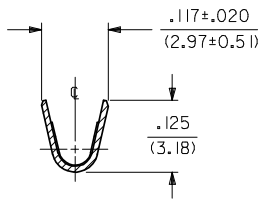
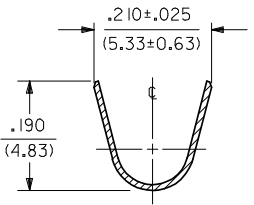
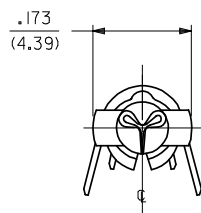
Description	Product #
Hand Crimp Tool	<u>0638191100</u>
Insertion Tool	<u>0011020003</u>

Extraction Tool	<u>0011030006</u>
Hand Crimper - DISTRIBUTION ONLY	<u>0638111000</u>

This document was generated on 05/17/2010

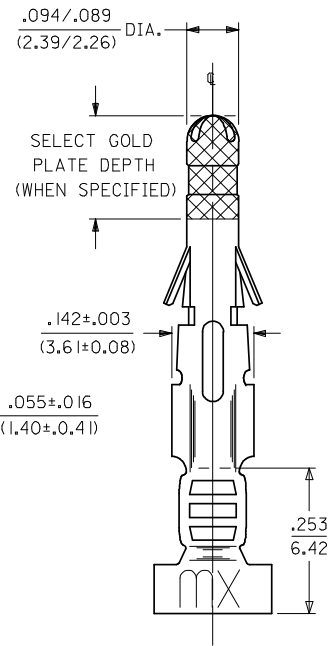
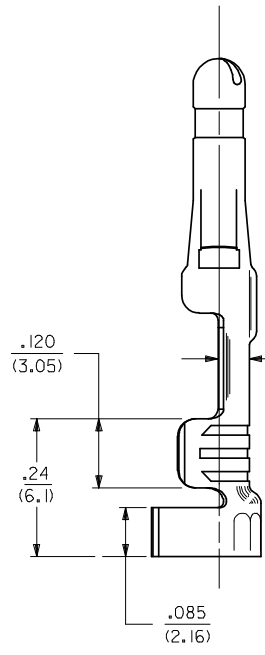
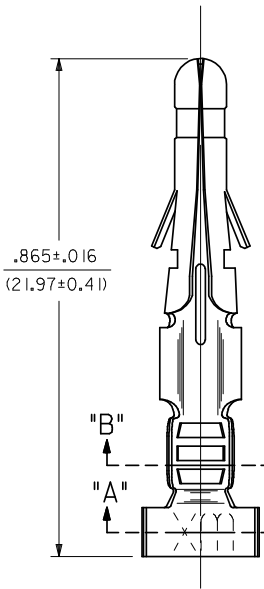
PLEASE CHECK WWW.MOLEX.COM FOR LATEST PART INFORMATION

PART NO.	ENG. NO.
02-09-2103	1190-(P901)L
02-09-2101	1190-(P901)
02-09-6110	1190-(591)L
02-09-6101	1190-(591)
02-09-6106	1190-(550)L
02-09-6100	1190-(550)



SECT. "A-A"

SECT. "B-B"

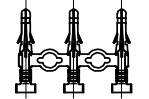


SEE NOTE

- NOTES:
- MATERIAL:
CARTRIDGE BRASS
 - FINISH CODES:
901 HOT TIN DIP .000020/(0.00051) MIN.
591 SELECT GOLD PLATE .000050/(0.00127) MIN. IN CONTACT AREA,
OVER .000050/(0.00127) MIN. NICKEL OVERALL
WITH .000010/(0.00025) MAX. GOLD FLASH OVERALL.
550 SELECT GOLD PLATE .000015/(0.00038) MIN. IN CONTACT AREA,
OVER .000030/(0.00076) MIN. NICKEL OVERALL
WITH .000010/(0.00025) MAX. GOLD FLASH OVERALL.
 - PRODUCT SPECIFICATION: PS-43660-9999
 - PACKAGING SPECIFICATION: PK-1190-001
 - INSERTION FORCE: 3.5 LBS. MAX. WHEN TERMINAL IS INSERTED INTO .093 SERIES HOUSING.
 - RETENTION: 20 LBS. MIN. FROM HOUSING.
 - DIMENSION FROM THE END OF THE TERMINAL TO THE END OF THE BRUSH ON THE WIRE CRIMPED INTO THE TERMINAL.
 - TERMINAL FOR USE WITH .093/(2.36) SERIES HOUSINGS AND WILL ACCEPT 14 THRU 20 AWG WIRE.

LEGEND

1190-(****)*
 P=PREPLATE
 BLANK=POSTPLATE
 FORM
 BLANK=CHAIN
 L=LOOSE
 FINISH CODE



CHAIN FORM FULL SCALE

ADD PK SPEC EC NO: UCP2009-0180 DRWG:GAVRILL 2008/08/15 CHKD:AEIHAG 2008/08/22 APPR:FSMLTH 2008/08/22 REV BS1	DESCRIPTION CRIMP TERMINAL, MALE	QUALITY SYMBOLS =0 =0	GENERAL TOLERANCES (UNLESS SPECIFIED) <table border="1"> <thead> <tr> <th></th> <th>mm</th> <th>INCH</th> </tr> </thead> <tbody> <tr> <td>4 PLACES ±</td> <td>---</td> <td>±---</td> </tr> <tr> <td>3 PLACES ±</td> <td>---</td> <td>±.010</td> </tr> <tr> <td>2 PLACES ±</td> <td>0.25</td> <td>±.014</td> </tr> <tr> <td>1 PLACE ±</td> <td>0.13</td> <td>±---</td> </tr> </tbody> </table>		mm	INCH	4 PLACES ±	---	±---	3 PLACES ±	---	±.010	2 PLACES ±	0.25	±.014	1 PLACE ±	0.13	±---	DIMENSION STYLE IN/MM	SCALE 6:1	DESIGN UNITS INCH	THIRD ANGLE PROJECTION
		mm	INCH																			
	4 PLACES ±	---	±---																			
	3 PLACES ±	---	±.010																			
2 PLACES ±	0.25	±.014																				
1 PLACE ±	0.13	±---																				
DRAWN BY GEP DATE 10/26/87		CHECKED BY RW DATE 10/26/87		APPROVED BY RAS DATE 10/26/87		TITLE CRIMP TERMINAL, MALE .093/(2.36) DIA. FOR 14 THRU 20 AWG. WIRE																
MATERIAL NO. SEE CHART		DOCUMENT NO. SD-1190-*		SHEET NO. 1 OF 1		MOLEX INCORPORATED																
DRAFT WHERE APPLICABLE MUST REMAIN WITHIN DIMENSIONS																						