

Coaxial

Power Splitter/Combiner

ZN2PD-20+

2 Way-0° 50Ω 750 to 2000 MHz



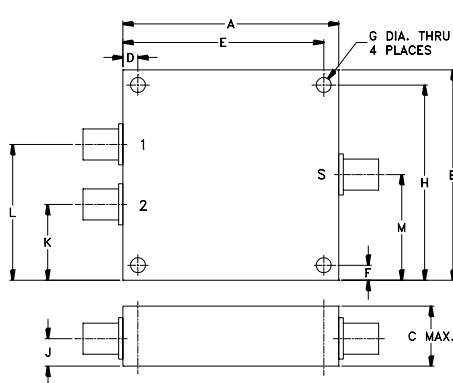
Maximum Ratings

Operating Temperature	-55°C to 100°C
Storage Temperature	-55°C to 100°C
Power Input (as a splitter)	5W max.
Internal Dissipation	0.725W max.

Coaxial Connections

SUM PORT	S
PORT 1	1
PORT 2	2

Outline Drawing



Outline Dimensions (inch/mm)

A	B	C	D	E	F	G	
1.80	1.75	.66	.125	1.675	.125	.125	
45.72	44.45	16.76	3.18	42.55	3.18	3.18	
H	J	K	L	M			wt
1.625	.31	.63	1.13	.88			grams
41.28	7.87	16.00	28.70	22.35			34

Features

- wideband, 750 to 2000 MHz
- low insertion loss, 0.2 dB typ.
- good isolation, 23 dB typ.
- very good input VSWR, 1.18:1 typ.
- excellent output VSWR, 1.07:1 typ.
- up to 5W power input

Applications

- VSAT
- communications systems
- instrumentations

CASE STYLE: VVV180

Connectors	Model	Price	Qty.
SMA	ZN2PD-20-S+	\$67.95	(1-9)

+ RoHS compliant in accordance with EU Directive (2002/95/EC)

The +Suffix has been added in order to identify RoHS Compliance. See our web site for RoHS Compliance methodologies and qualifications.

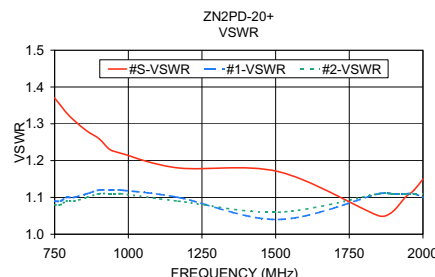
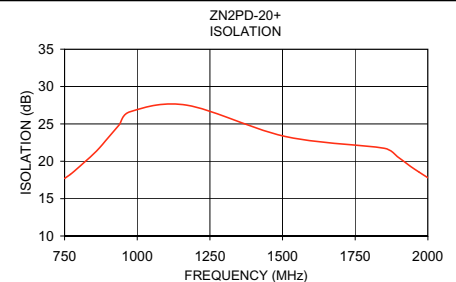
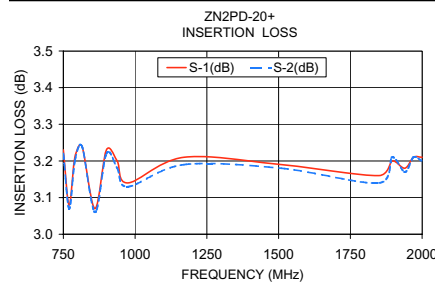
Electrical Specifications

FREQ. RANGE (MHz)	ISOLATION (dB)			INSERTION LOSS (dB) ABOVE 3.0 dB		PHASE UNBALANCE (Degrees)	AMPLITUDE UNBALANCE (dB)	VSWR (:1)						
	L	M	U	Typ.	Max.			S	OUT					
f _L -f _U	Typ.	Min.	Typ.	Min.	Typ.	Min.	Max.	Typ.	Max.					
750-2000	18	15	25	20	18	15	0.2	0.5	4	0.3	1.16	1.5	1.10	1.35

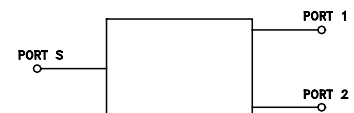
L = 750-875 MHz M = 875-1850 MHz U = 1850-2000 MHz

Typical Performance Data

Frequency (MHz)	Insertion Loss (dB)		Amplitude Unbalance (dB)	Isolation (dB)	Phase Unbalance (deg.)	VSWR S	VSWR 1	VSWR 2
	S-1	S-2						
750.00	3.23	3.22	0.01	17.70	0.01	1.37	1.09	1.08
770.00	3.08	3.07	0.01	18.24	0.08	1.35	1.09	1.08
790.00	3.21	3.20	0.01	18.90	0.12	1.33	1.10	1.09
815.00	3.24	3.24	0.00	19.76	0.14	1.31	1.10	1.09
860.00	3.07	3.06	0.01	21.37	0.02	1.28	1.11	1.10
900.00	3.23	3.22	0.01	23.15	0.02	1.26	1.12	1.11
937.50	3.20	3.18	0.02	24.86	0.04	1.23	1.12	1.11
975.00	3.14	3.13	0.01	26.62	0.09	1.22	1.12	1.11
1170.00	3.21	3.19	0.02	27.51	0.05	1.18	1.10	1.09
1510.00	3.19	3.18	0.01	23.31	0.20	1.17	1.04	1.06
1850.00	3.16	3.14	0.02	21.74	0.20	1.05	1.11	1.11
1895.00	3.20	3.21	0.01	20.63	0.25	1.06	1.11	1.11
1940.00	3.18	3.17	0.01	19.32	0.23	1.10	1.11	1.11
1970.00	3.21	3.21	0.00	18.54	0.20	1.12	1.11	1.11
2000.00	3.21	3.20	0.01	17.80	0.24	1.15	1.10	1.11



electrical schematic



Mini-Circuits®
ISO 9001 ISO 14001 CERTIFIED

ALL NEW
minicircuits.com

P.O. Box 350166, Brooklyn, New York 11235-0003 (718) 934-4500 Fax (718) 332-4661 For detailed performance specs & shopping online see Mini-Circuits web site



The Design Engineers Search Engine Provides ACTUAL Data Instantly From MINI-CIRCUITS At: www.minicircuits.com

REV. D
M108294
ZN2PD-20+
LC/TD/CP/AM
070610

RF/IF MICROWAVE COMPONENTS