

POWER LINE CHOKE

(DRUM CORE STYLE)

Electrical Specifications at 25°C

Parameter	Min.	Typ.	Max.	Units
Inductance	2000	2500	3000	μH
I_{MAX}^1		7.8		A
DCR		200		mΩ
Lead Diameter		.050 (1.27)		inches (mm)

Applications

Power Amplifiers

Filters Power Supplies

SCR and Triac Controls

Speaker Crossover Networks

RFI Suppression

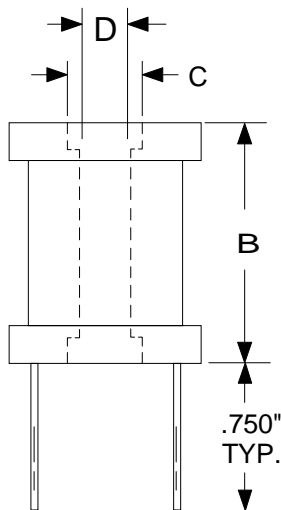
Operating temperature Range
-45°C to +85°C

Test Conditions:

Inductance tested at 100 mV_{RMS} and 1 kHz

1. Current for 10% drop in Inductance

PHYSICAL DIMENSIONS All dimensions in inches

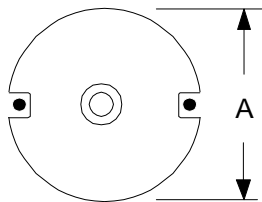


Dim.	inches
A	2.200
B	1.380
C	0.380
D	0.290

High Saturation

Pre-Tinned Leads

Center hole for mechanical mounting



Leads are .050 (#16 AWG)

Leads tinned to within 1/8" of body.

RHOMBUS P/N: **L-12639**

CUST P/N:

NAME:

DATE: **1/21/99**

SHEET: