



BNC (Isolated) Series

BNC (Isolated) Receptacle Connectors Commercial Type



- Intermateable with standard BNC plugs
- Available in Panel mounting and PCB mounting style
- Electrically isolated plastic housing
- Available in black or white plastic housing

SPECIFICATION, MATERIAL/FINISH

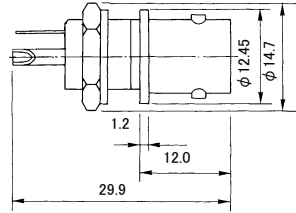
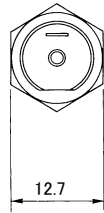
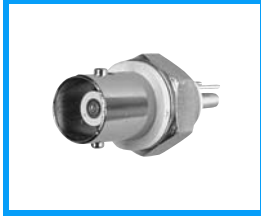
| | Panel mounting type | |
|---------------------------------|---|---|
| Connector style |  |  |
| P/N | 31-10 | 31-10T |
| Center conductor | Copper alloy/Silver plating (Round socket) | Copper alloy/Silver plating (Stamped tuning fork style socket) |
| Outer conductor | Zinc alloy/Nickel plating | Zinc alloy/Nickel plating |
| Housing | Noryl resin (UL94V-0)/White | |
| Dielectric withstanding voltage | 1500V AC (rms) 1 minute | |
| Insulation resistance | 5000M Ω min. at 500V DC | |

BNC (Isolated) Series

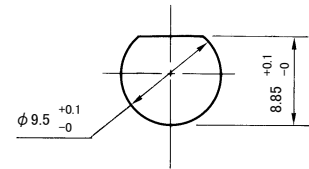
Unit : mm

■ Panel Mounting Type

31-10



Mounting Hole



Panel thickness: 4.3Max.

31-10T

