

PLEASE CHECK WWW.MOLEX.COM FOR LATEST PART INFORMATION

Part Number: **5011932000**
Status: **Active**
Overview: [picoclasp](#)
Description: 1.00mm (.039") Pitch Pico-Clasp™ Wire-to-Board Crimp Terminal, 28-32 AWG, Lead-free, Gold Plating

Documents:

[Drawing \(PDF\)](#) [Product Specification PS-501571-001 \(PDF\)](#)
[Product Specification PS-501190-001 \(PDF\)](#) [RoHS Certificate of Compliance \(PDF\)](#)
[Product Specification PS-501190-003 \(PDF\)](#)

General

Product Family Crimp Terminals
 Series [501193](#)
 Crimp Quality Equipment Yes
 Overview [picoclasp](#)
 Product Name Pico-Clasp™

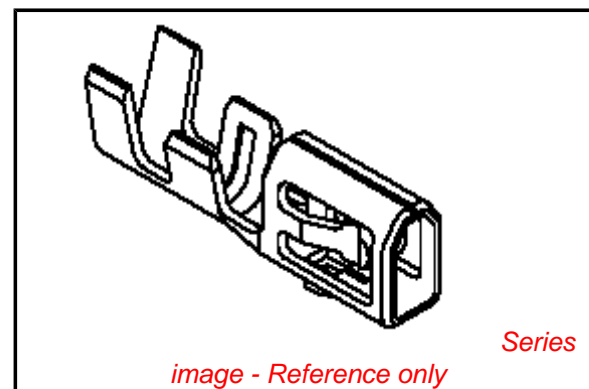
Physical

Gender Receptacle
 Material - Metal Phosphor Bronze
 Material - Plating Mating Gold
 Packaging Type Reel
 Termination Interface: Style Crimp or Compression
 Wire Insulation Diameter 0.80mm (.031") max.
 Wire Size AWG 28, 30, 32
 Wire Size mm² N/A

Material Info

Reference - Drawing Numbers

Product Specification PS-501190-001, PS-501190-003, PS-501571-001,
 RPS-501190-008, RPS-501331-001, RPS-501571-007,
 RPS-501571-008
 Sales Drawing SD-501193-002



EU RoHS

**ELV and RoHS
 Compliant**
**REACH SVHC
 Contains SVHC: No
 Halogen-Free
 Status**

China RoHS



Not Reviewed

**Need more information on product
 environmental compliance?**

Email productcompliance@molex.com
 For a multiple part number RoHS Certificate of
 Compliance, [click here](#)

Please visit the [Contact Us](#) section for any
 non-product compliance questions.

Search Parts in this Series

[501193Series](#)

Use With

[501189 Crimp Housing](#)

Application Tooling | FAQ

*Tooling specifications and manuals are
 found by selecting the products below.
 Crimp Height Specifications are then
 contained in the Application Tooling
 Specification document.*

Global

Description	Product #
Fine Adjust™ Applicator for 1.00mm (.039") Pitch Wire-to-Board Crimp Terminal	0639019400
Hand Crimp Tool for 1.00mm (.039") Pico-Clasp™ Wire- to-Board Crimp	0638191500

Terminal, 28-32
AWG

Japan

Description	Product #
--------------------	------------------

Applicator for M211A	<u>5780163000</u>
----------------------	-------------------

Bench Press, 28-32

AWG, for 501193

and 501334 Crimp

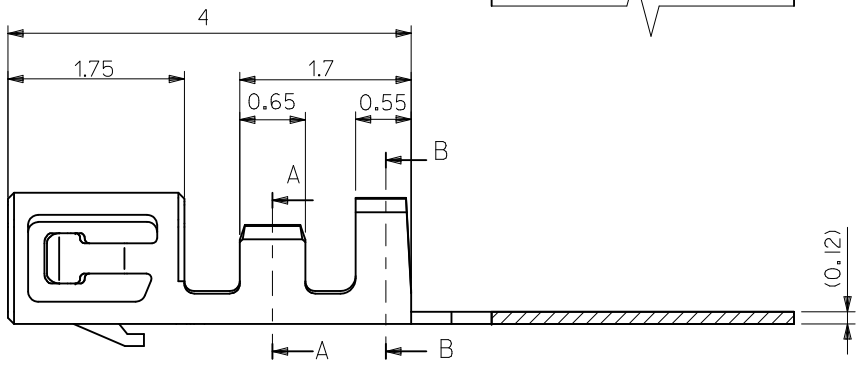
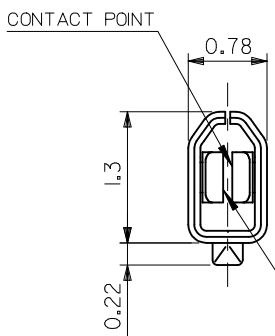
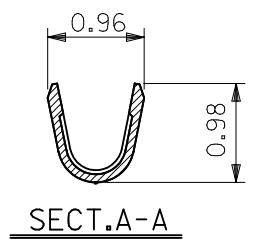
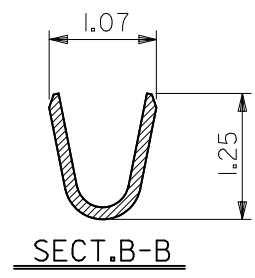
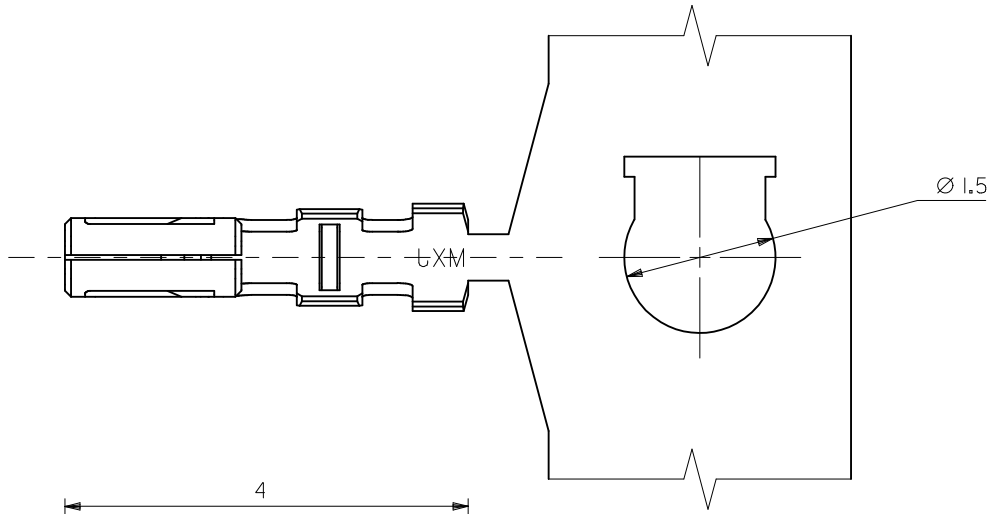
Terminal

Hand Extraction Tool 5780166000

This document was generated on 05/31/2010

PLEASE CHECK WWW.MOLEX.COM FOR LATEST PART INFORMATION

10 9 8 7 6 5 4 3 2 1



NOTES.

- 適合ハウジング: 501189-****
APPLICABLE HOUSING : 501189-****
- メッキ仕様 (前メッキ)
PLATING (PRE-PLATING)
接点部金メッキ: 0.1μm MIN.
CONTACT AREA GOLD PLATING
下地ニッケルメッキ: 1.0μm MIN.
UNDER PLATING NICKEL PLATING
- 本製品は 501193 の部分金メッキ品である。
THIS PRODUCT IS A PRODUCT THAT GAVE 501193
A PARTIAL GOLD PLATE.

501193-2100	バラ状 LOOSE
501193-2000	連鎖状 CHAIN
MATERIAL NO.	端子形状 FORM

MATERIAL リン青銅 下地ニッケル、部分金メッキ品 PHOSPHOR BRONZE t=0.12 PRE-GOLD PLATING PRE-UNDER NICKEL PLATING	REVISED EC NO: J2010-1758 DRWN: H. KOBAYASHI 2010/03/02 CH'KD: SSAT003 2010/03/02 APPR: NUKITA 2010/03/02	GENERAL TOLERANCES (UNLESS SPECIFIED)		DIMENSION STYLE MM ONLY	SCALE 20:1	DESIGN UNITS METRIC	THIRD ANGLE PROJECTION
		10 UNDER ±0.2 10 OVER 30 UNDER ±0.25 30 OVER ±0.3	DRAWN BY M. NABEI '07/11/13	DATE '07/11/13	TITLE 1.0 WIRE TO BOARD CONN. CRIMP REC TERMINAL		
		ANGULAR ±3 ° DRAFT WHERE APPLICABLE MUST REMAIN WITHIN DIMENSIONS	CHECKED BY K. TOYODA '07/11/13	DATE '07/11/13	MOLEX INCORPORATED		
		SEE NOTE WIRE RANGE AWG#28-32 INS. RANGE ø 0.4-0.8	APPROVED BY NUKITA '07/11/13	DATE '07/11/13	MATERIAL NO. SEE TABLE	DOCUMENT NO. SD-501193-002	SHEET NO. 1 OF 1