

PLEASE CHECK WWW.MOLEX.COM FOR LATEST PART INFORMATION

Part Number: [0879371600](#)
Status: **Active**
Overview: [kk](#)
Description: 2.54mm (.100") Pitch KK® Header, Single Row Dual Body, Through Hole, Vertical, 16 Circuits, 0.25µm (10µ") Gold(Au) Selective Plating, 17.63mm (.694") Stacking Height, Lead-free

Documents:

[3D Model](#) [Product Specification PS-87920-019 \(PDF\)](#)
[Drawing \(PDF\)](#) [RoHS Certificate of Compliance \(PDF\)](#)

Agency Certification

UL E29179

General

Product Family PCB Headers
 Series [87937](#)
 Application Board-to-Board, Wire-to-Board
 Overview [kk](#)
 Product Name Dual Body, KK®

Physical

Breakaway Yes
 Circuits (Loaded) 16
 Circuits (maximum) 16
 Color - Resin Black
 First Mate / Last Break No
 Flammability 94V-0
 Glow-Wire Compliant No
 Guide to Mating Part No
 Keying to Mating Part None
 Lock to Mating Part None
 Mated Height (in) 0.500 In
 Mated Height (mm) 12.70 mm
 Material - Metal Copper Alloy
 Material - Plating Mating Gold
 Material - Plating Termination Tin
 Material - Resin Nylon
 Number of Rows 1
 Orientation Vertical
 PC Tail Length (in) 0.236 In
 PC Tail Length (mm) 5.99 mm
 PCB Locator No
 PCB Retention None
 PCB Thickness Recommended (in) 0.062 In
 PCB Thickness Recommended (mm) 1.60 mm
 Packaging Type Tray
 Pitch - Mating Interface (in) 0.100 In
 Pitch - Mating Interface (mm) 2.54 mm
 Pitch - Term. Interface (in) 0.100 In
 Pitch - Term. Interface (mm) 2.54 mm
 Plating min: Mating (µin) 10
 Plating min: Mating (µm) 0.25
 Plating min: Termination (µin) 80
 Plating min: Termination (µm) 2.00
 Polarized to Mating Part No

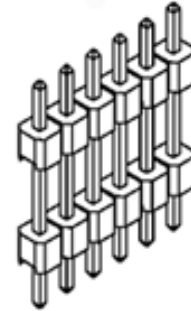


image - Reference only

Series

EU RoHS

ELV and RoHS Compliant
REACH SVHC
 Not Reviewed
Halogen-Free Status
Not Reviewed

China RoHS



Need more information on product environmental compliance?

Email productcompliance@molex.com
 For a multiple part number RoHS Certificate of Compliance, [click here](#)

Please visit the [Contact Us](#) section for any non-product compliance questions.

Search Parts in this Series

[87937Series](#)

Mates With

KK® PCB Receptacles [4455](#). SL™ IDT Housings [70430](#) , [7720](#), [70400](#). C-Grid® PCB Receptacles [90147](#), [90148](#)

Polarized to PCB	No
Shrouded	No
Stackable	No
Surface Mount Compatible (SMC)	Yes
Temperature Range - Operating	-55°C to +105°C
Termination Interface: Style	Through Hole

Electrical

Current - Maximum per Contact	3A
Voltage - Maximum	250V

Solder Process Data

Duration at Max. Process Temperature (seconds)	12
Lead-free Process Capability	Wave Capable (TH only)
Max. Cycles at Max. Process Temperature	1
Process Temperature max. C	260

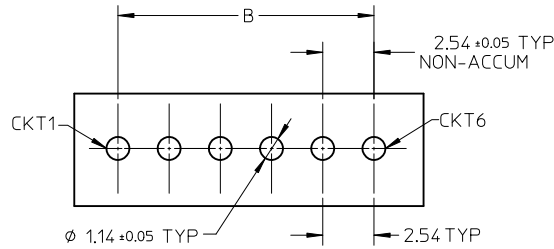
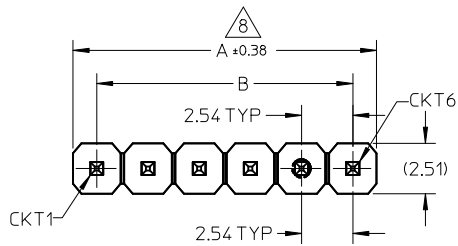
Material Info

Reference - Drawing Numbers

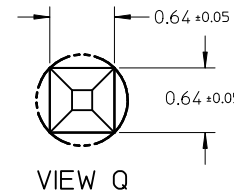
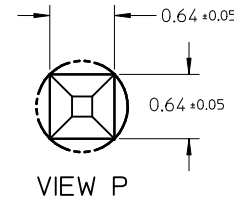
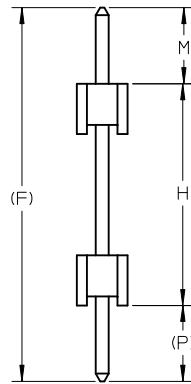
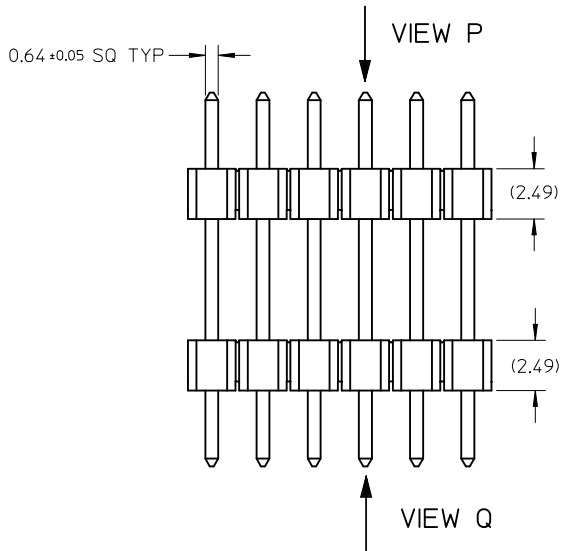
Packaging Specification	PK-89990-491
Product Specification	PS-87920-019
Sales Drawing	SD-87937-007

This document was generated on 05/26/2010

PLEASE CHECK WWW.MOLEX.COM FOR LATEST PART INFORMATION

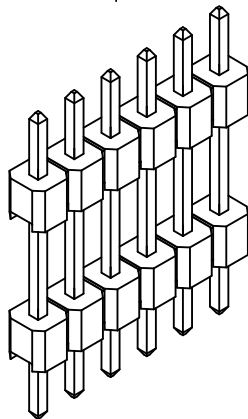


RECOMMENDED PCB HOLE LAYOUT



NOTES:


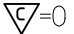
1. MATERIAL:
HOUSING: NYLON, GLASS FILLED, UL94V-0,
COLOR: BLACK
TERMINAL: 0.64MM SQ PIN, COPPER ALLOY
2. PLATING TYPE:
 - (1) : GOLD FLASH OVER
1.25µm MIN. NICKEL OVERALL.
 - (2) : 0.05 µm MIN. GOLD PLATE ON CONTACT AND
2.50 µm MIN. TIN ON SOLDERTAIL OVER
1.25 µm MIN. NICKEL OVERALL.
 - (3) : 0.38 µm MIN. GOLD PLATE ON CONTACT AND
2.00 µm MIN. TIN ON SOLDERTAIL OVER
1.25 µm MIN. NICKEL OVERALL.
 - (4) : 0.75 µm MIN. GOLD PLATE ON CONTACT AND
2.00 µm MIN. TIN ON SOLDERTAIL OVER
1.25 µm MIN. NICKEL OVERALL.
 - (5) : 2.50 µm MIN. TIN OVER
1.25 µm MIN. NICKEL OVERALL.
 - (6) : 0.75 µm MIN. GOLD PLATE ON CONTACT AND
SOLDERTAIL OVER 1.25 µm MIN. NICKEL OVERALL.
3. THE ABOVE 6 CKT IS FOR ILLUSTRATION PURPOSE ONLY.
4. PACKAGING TYPE: SEE TABLE
5. RECOMMENDED PCB THICKNESS 1.60MM.
6. PRODUCT SPECIFICATION: PS-87920-019
7. WAFER TO BE FLAT WITHIN 0.003mm/mm
8. IRREGULAR CIRCUIT CUTOFF WITHIN BREAKAWAY SECTION IS PERMISSIBLE. CUTTING OR CHIPPING OF THE MAIN BODY IS NOT ACCEPTABLE.
9. PARTS ARE NOT STACKABLE ON 2.54 CENTER
10. PACKAGING SPECIFICATION: SEE TABLE



ADD P/N: 87937-1602 EC NO: S2010-0138 DRWN:SKANG 2009/08/12 CHKD:ATSEE 2010/01/04 APPR:MLONG 2010/01/14	QUALITY SYMBOLS ▽=0 ◻=0	GENERAL TOLERANCES (UNLESS SPECIFIED)		DIMENSION STYLE		SCALE	DESIGN UNITS	THIRD ANGLE PROJECTION		
				MM ONLY		NTS	METRIC			
				mm	INCH	DRAWN BY		DATE		TITLE
						SKLIM01		2006/03/10		CUSTOM HEADER
REV A5	DESCRIPTION	4 PLACES ± --- ± ---		CHECKED BY		DATE		2.54MM PITCH SINGLE ROW		
		3 PLACES ± --- ± ---		PATEY		2006/03/20		DUAL WAFER HEADER, T/H		
		2 PLACES ± 0.2 ± ---		APPROVED BY		DATE		MOLEX INCORPORATED		
		1 PLACE ± --- ± ---		MLONG		2010/01/14		MOLEX INCORPORATED		
		ANGULAR ± 3 °		MATERIAL NO.		DOCUMENT NO.		SHEET NO.		
		DRAFT WHERE APPLICABLE MUST REMAIN WITHIN DIMENSIONS		SEE TABLE		SD-87937-007		1 OF 2		
				SIZE		THIS DRAWING CONTAINS INFORMATION THAT IS PROPRIETARY TO MOLEX INCORPORATED AND SHOULD NOT BE USED WITHOUT WRITTEN PERMISSION				

10 | 9 | 8 | 7 | 6 | 5 | 4 | 3 | 2 | 1

PART NUMBERS	CKT SIZE	VOID POSITION	DIMENSION							PLATING OPTION	PACKAGING TYPE	PACKAGING SPECIFICATION
			A	B	M	H	(P)	(F)				
			MATING END	STACKER HEIGHT	SOLDER TAIL							
87937-0200	2	----	5.08	2.54	4.57	8.64	2.79	16.00	5	TRAY PACKED	PK-89990-489	
87937-0202	2	----	5.08	2.54	3.50	25.00	3.50	32.00	5	TRAY PACKED	PK-89990-489	
87937-0600	6	----	15.24	12.70	12.20	10.90	12.20	35.30	6	TRAY PACKED	PK-89990-489	
87937-0800	8	----	20.32	17.78	9.00	12.00	3.00	24.00	5	TRAY PACKED	PK-89990-489	
87937-0801	8	----	20.32	17.78	12.20	10.90	12.20	35.30	6	TRAY PACKED	PK-89990-489	
87937-1600	16	----	40.64	38.10	12.70	17.63	5.99	36.32	3	BULK PACKED	PK-89990-491	
87937-1601	16	----	40.64	38.10	11.94	19.05	2.79	33.78	3	BULK PACKED	PK-89990-491	
87937-1602	16	----	40.64	38.10	2.14	8.70	2.16	13.00	5	BULK PACKED	PK-89990-491	

ADD P/N: 87937-1602 EC NO: S2010-0138 DRWN:SKANG 2009/08/12 CHKD:ATSEE 2010/01/04 APPR:MLONG 2010/01/14	QUALITY SYMBOLS	GENERAL TOLERANCES (UNLESS SPECIFIED)	DIMENSION STYLE	SCALE	DESIGN UNITS	THIRD ANGLE PROJECTION	
	 = 0  = 0.2	mm	INCH	MM ONLY	NTS	METRIC	
		4 PLACES	± ---	± ---	DRAWN BY	DATE	TITLE
	DRAFT WHERE APPLICABLE MUST REMAIN WITHIN DIMENSIONS	3 PLACES	± ---	± ---	SKLIM01	2006/03/10	CUSTOM HEADER 2.54MM PITCH SINGLE ROW DUAL WAFER HEADER, T/H
		2 PLACES	± 0.2	± ---	CHECKED BY	DATE	
1 PLACE		± ---	± ---	PATEY	2006/03/20	SD-87937-007	
REV	DESCRIPTION	ANGULAR ± 3 °	APPROVED BY	DATE	MATERIAL NO.	SHEET NO.	
A5			MLONG	2010/01/14	SEE TABLE	2 OF 2	

9 | 8 | 7 | 6 | 5 | 4 | 3 | 2 | 1