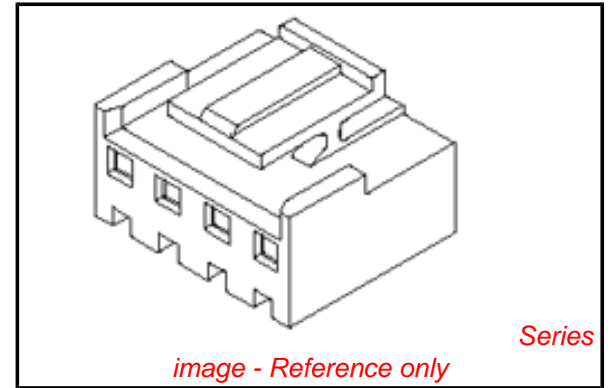


**PLEASE CHECK WWW.MOLEX.COM FOR LATEST PART INFORMATION**

**Part Number:** [0359770504](#)  
**Status:** **Planned for Obsolescence**  
**Overview:** [mv396](#)  
**Description:** 3.96mm (.156") Pitch Wire-to-Board Housing, Positive Lock, 5 Circuits, PA Polyamide Nylon 6/6, UL 94V-2, Blue, Glow Wire Compatible

**Documents:**

|  |  |
|--|--|
| <a href="#">3D Model</a>                                 | <a href="#">Product Specification PS-35979-001 (PDF)</a> |
| <a href="#">Drawing (PDF)</a>                            | <a href="#">RoHS Certificate of Compliance (PDF)</a>     |
| <a href="#">Product Specification PS-35978-001 (PDF)</a> |  |



**Agency Certification**

|     |           |
|-----|-----------|
| CSA | LR19980   |
| TUV | R72090224 |
| UL  | E29179    |

**General**

|                |                       |
|----------------|-----------------------|
| Product Family | Crimp Housings        |
| Series         | <a href="#">35977</a> |
| Overview       | <a href="#">mv396</a> |
| Product Name   | MV-396™               |

**Physical**

|                               |                |
|-------------------------------|----------------|
| Breakaway                     | No             |
| Circuits (maximum)            | 5              |
| Color - Resin                 | Blue           |
| Flammability                  | 94V-0          |
| Gender                        | Female         |
| Glow-Wire Compliant           | No             |
| Keying to Mating Part         | None           |
| Lock to Mating Part           | Yes            |
| Material - Resin              | Nylon          |
| Number of Rows                | 1              |
| Packaging Type                | Bag            |
| Panel Mount                   | No             |
| Pitch - Mating Interface (in) | 0.156 In       |
| Pitch - Mating Interface (mm) | 3.96 mm        |
| Polarized to Mating Part      | Yes            |
| Stackable                     | Yes            |
| Temperature Range - Operating | -25°C to +85°C |

**Electrical**

|                               |    |
|-------------------------------|----|
| Current - Maximum per Contact | 7A |
|-------------------------------|----|

**Material Info**

**Reference - Drawing Numbers**

|                         |                            |
|-------------------------|----------------------------|
| Packaging Specification | PK-35977-001               |
| Product Specification   | PS-35978-001, PS-35979-001 |
| Sales Drawing           | SD-35977-001               |

**EU RoHS**

**ELV and RoHS Compliant**  
**REACH SVHC**  
 Not Reviewed  
**Halogen-Free Status**

**China RoHS**



**Need more information on product environmental compliance?**

Email [productcompliance@molex.com](mailto:productcompliance@molex.com)  
 For a multiple part number RoHS Certificate of Compliance, [click here](#)

Please visit the [Contact Us](#) section for any non-product compliance questions.

**Search Parts in this Series**

[35977Series](#)

**Mates With**

Wire-to-Board Header [35978](#) , [35979](#)

**Use With**

Wire-to-Board Terminal [35922](#)



NOTES

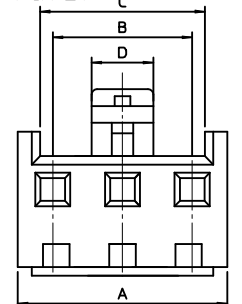
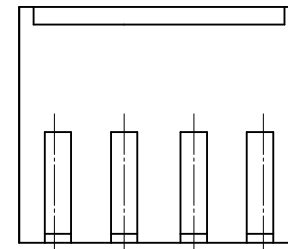
- USED WITH TERMINAL : 35922-9002
- MATED WITH HEADER ASS'Y : 35978-\*\*1\*(PA66) 35978-\*\*2\*(PA66)  
 LEGEND 35978-\*\*3\*(PC/PET) 35978-\*\*4\*(PC/PET)

35977-\*\*\*\*

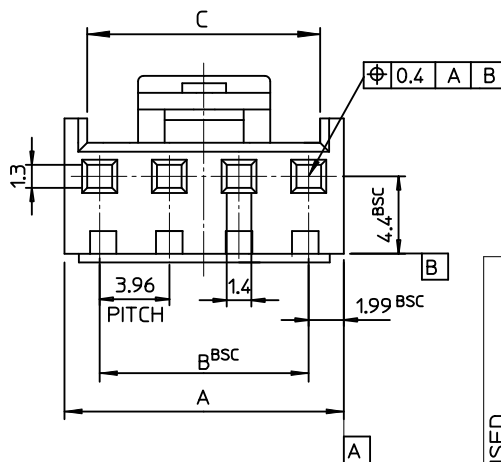
- COLOR : 0 - WHITE
- 1 - BLACK
- 2 - RED
- 3 - YELLOW
- 4 - BLUE

MATERIAL 0 : PA66 (E) 9 : PC/PET

CURCUIT NO. (02,03,04...)



\* 2~3 CIRCUITS ONLY \*



|      |       |       |       |           |            |          |
|------|-------|-------|-------|-----------|------------|----------|
| 19.9 | 56.88 | 55.44 | 59.42 | 3597715** | 35977-15** | 15       |
| 19.9 | 52.92 | 51.48 | 55.46 | 3597714** | -14**      | 14       |
| 19.9 | 48.96 | 47.52 | 51.5  | 3597713** | -13**      | 13       |
| 19.9 | 45.0  | 43.56 | 47.54 | 3597712** | -12**      | 12       |
| 19.9 | 41.04 | 39.6  | 43.58 | 3597711** | -11**      | 11       |
| 19.9 | 37.08 | 35.64 | 39.62 | 3597710** | -10**      | 10       |
| 17.7 | 33.12 | 31.68 | 35.66 | 3597709** | -09**      | 9        |
| 15.7 | 29.16 | 27.72 | 31.70 | 3597708** | -08**      | 8        |
| 13.7 | 25.20 | 23.76 | 27.74 | 3597707** | -07**      | 7        |
| 7.5  | 21.24 | 19.80 | 23.78 | 3597706** | -06**      | 6        |
|      | 17.28 | 15.84 | 19.82 | 3597705** | -05**      | 5        |
|      | 13.32 | 11.88 | 15.86 | 3597704** | -04**      | 4        |
|      | 9.36  | 7.92  | 11.90 | 3597703** | -03**      | 3        |
| 3.5  | 5.4   | 3.96  | 7.94  | 3597702** | 35977-02** | 2        |
| D    | C     | B     | A     | MAT'L NO  | ENG NO.    | CIRCUITS |

|   |                                  |   |                                     |                             |   |          |       |       |          |       |       |          |       |       |         |        |       |                                   |                     |                               |                        |
|---|----------------------------------|---|-------------------------------------|-----------------------------|---|----------|-------|-------|----------|-------|-------|----------|-------|-------|---------|--------|-------|-----------------------------------|---------------------|-------------------------------|------------------------|
| <b>REVISED</b><br>EC NO: KOR2009-0137<br>DRAWN: JHPARK01 2009/05/21<br>CHKD: WY YANG 2009/05/21<br>APPR: YUNSIKKIM 2009/05/22 | QUALITY SYMBOLS<br>              | GENERAL TOLERANCES (UNLESS SPECIFIED)<br><table border="1"> <tr> <td></td> <td>mm</td> <td>INCH</td> </tr> <tr> <td>4 PLACES</td> <td>± ---</td> <td>± ---</td> </tr> <tr> <td>3 PLACES</td> <td>± ---</td> <td>± ---</td> </tr> <tr> <td>2 PLACES</td> <td>± ---</td> <td>± ---</td> </tr> <tr> <td>1 PLACE</td> <td>± 0.30</td> <td>± ---</td> </tr> </table> |                                     | mm                          | INCH  | 4 PLACES | ± --- | ± --- | 3 PLACES | ± --- | ± --- | 2 PLACES | ± --- | ± --- | 1 PLACE | ± 0.30 | ± --- | DIMENSION STYLE<br><b>MM ONLY</b> | SCALE<br><b>3:1</b> | DESIGN UNITS<br><b>METRIC</b> | THIRD ANGLE PROJECTION |
|   |                                  | mm  | INCH                                |                             |   |          |       |       |          |       |       |          |       |       |         |        |       |                                   |                     |                               |                        |
|   | 4 PLACES                         | ± ---   | ± ---                               |                             |   |          |       |       |          |       |       |          |       |       |         |        |       |                                   |                     |                               |                        |
|   | 3 PLACES                         | ± ---   | ± ---                               |                             |   |          |       |       |          |       |       |          |       |       |         |        |       |                                   |                     |                               |                        |
| 2 PLACES  | ± ---                            | ± ---   |                                     |                             |   |          |       |       |          |       |       |          |       |       |         |        |       |                                   |                     |                               |                        |
| 1 PLACE   | ± 0.30                           | ± ---   |                                     |                             |   |          |       |       |          |       |       |          |       |       |         |        |       |                                   |                     |                               |                        |
| DESCRIPTION<br><b>W-T-B CONN. HOUSING</b>   | DRAWN BY<br>YR.WI                | DATE<br>1999/05/06  | <b>3.96 PITCH</b>                   |                             |   |          |       |       |          |       |       |          |       |       |         |        |       |                                   |                     |                               |                        |
| REV<br><b>3</b>   | APPROVED BY<br>CW.LEE            | DATE<br>1999/05/06  | <b>MOLEX INCORPORATED</b>           |                             |   |          |       |       |          |       |       |          |       |       |         |        |       |                                   |                     |                               |                        |
| DRAFT WHERE APPLICABLE MUST REMAIN WITHIN DIMENSIONS  | MATERIAL NO.<br><b>SEE TABLE</b> | DATE<br>1999/05/06  | DOCUMENT NO.<br><b>SD-35977-001</b> | SHEET NO.<br><b>1 OF 01</b> | THIS DRAWING CONTAINS INFORMATION THAT IS PROPRIETARY TO MOLEX INCORPORATED AND SHOULD NOT BE USED WITHOUT WRITTEN PERMISSION |          |       |       |          |       |       |          |       |       |         |        |       |                                   |                     |                               |                        |