

PLEASE CHECK WWW.MOLEX.COM FOR LATEST PART INFORMATION

Part Number: [0026112093](#)
Status: **Active**
Overview: [kk](#)
Description: 3.96mm (.156") Pitch KK® PC Board Connector, Top Entry, Nylon Connector, 1.0µm (40µ") Tin (Sn), 9 Circuits

Documents:

[3D Model](#) [Product Specification PS-99020-0087 \(PDF\)](#)
[Drawing \(PDF\)](#) [RoHS Certificate of Compliance \(PDF\)](#)

General

Product Family PCB Receptacles
 Series [3215](#)
 Application Board-to-Board
 Overview [kk](#)
 Product Name KK®

Physical

Circuits (Loaded) 9
 Color - Resin Natural
 Glow-Wire Compliant No
 Keying to Mating Part Yes
 Lock to Mating Part Yes
 Material - Metal Phosphor Bronze
 Material - Plating Mating Tin
 Material - Plating Termination Tin
 Material - Resin Nylon
 Number of Rows 1
 Orientation Vertical
 PC Tail Length (in) 0.120 In
 PC Tail Length (mm) 3.05 mm
 PCB Locator No
 PCB Retention None
 PCB Thickness Recommended (in) 0.062 In
 PCB Thickness Recommended (mm) 1.60 mm
 Packaging Type Bag
 Pitch - Mating Interface (in) 0.156 In
 Pitch - Mating Interface (mm) 3.96 mm
 Plating min: Mating (µin) 40.00
 Plating min: Mating (µm) 1.000
 Plating min: Termination (µin) 40.00
 Plating min: Termination (µm) 1.00
 Polarized to PCB No
 Temperature Range - Operating 0°C to +75°C
 Termination Interface: Style Through Hole

Electrical

Current - Maximum per Contact 5A
 Voltage - Maximum 250V

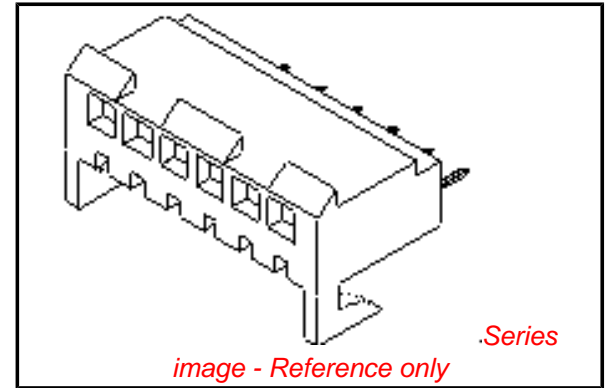
Solder Process Data

Lead-free Process Capability Wave Capable (TH only)

Material Info

Old Part Number 3215HR09AC

Reference - Drawing Numbers



EU RoHS

ELV and RoHS Compliant
REACH SVHC
 Not Reviewed
Halogen-Free Status
Not Reviewed

China RoHS



Need more information on product environmental compliance?

Email productcompliance@molex.com
 For a multiple part number RoHS Certificate of Compliance, [click here](#)

Please visit the [Contact Us](#) section for any non-product compliance questions.

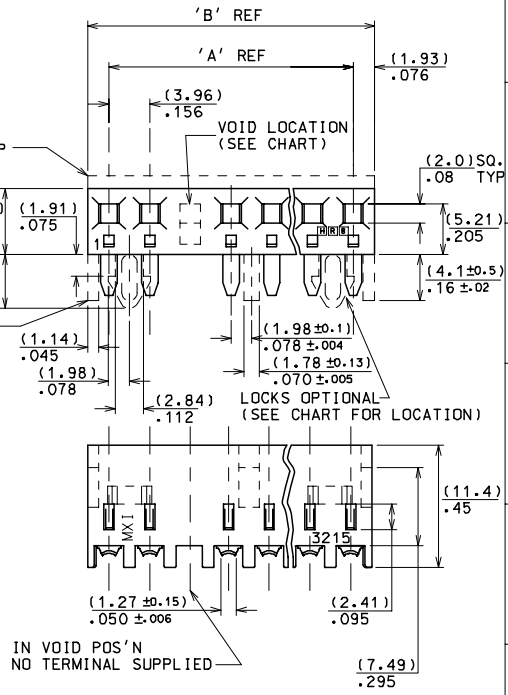
Search Parts in this Series
[3215Series](#)

This document was generated on 06/08/2010

PLEASE CHECK WWW.MOLEX.COM FOR LATEST PART INFORMATION

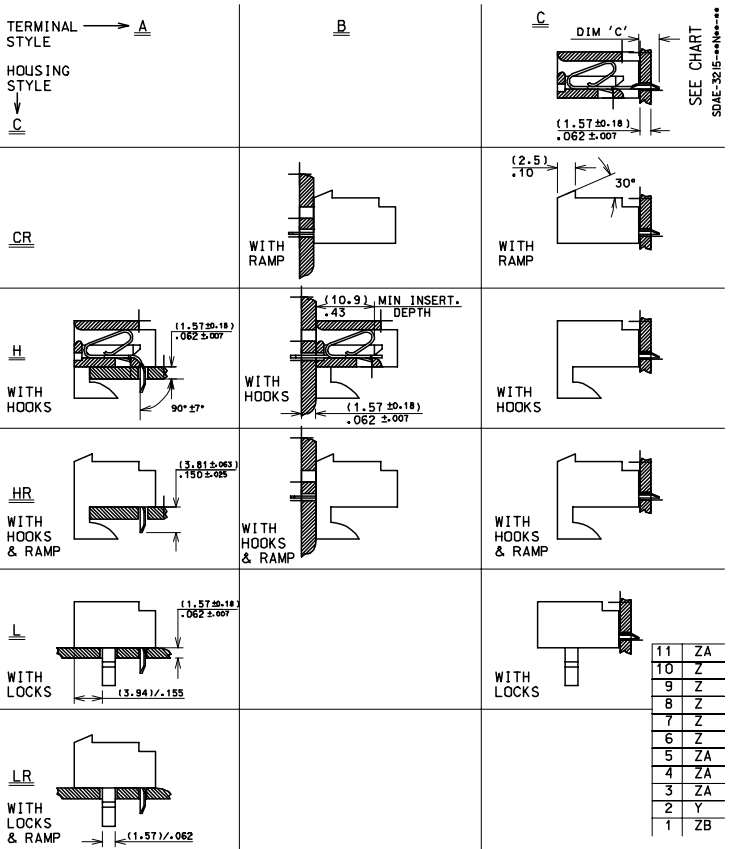
20	(75.29±0.41)	(79.15±0.51)
	2.964±.016	3.116±.020
19	(71.32±0.41)	(75.18±0.51)
	2.808±.016	2.960±.020
18	(67.36±0.36)	(71.22±0.46)
	2.652±.014	2.804±.018
17	(63.40±0.36)	(67.26±0.46)
	2.496±.014	2.648±.018
16	(59.44±0.36)	(63.29±0.46)
	2.340±.014	2.492±.018
15	(55.47±0.33)	(59.33±0.41)
	2.184±.012	2.336±.016
14	(51.51±0.33)	(55.37±0.41)
	2.028±.012	2.180±.016
13	(47.55±0.30)	(51.41±0.41)
	1.872±.012	2.024±.016
12	(43.59±0.25)	(47.45±0.36)
	1.716±.010	1.868±.014
11	(39.62±0.25)	(43.48±0.36)
	1.560±.010	1.712±.014
10	(35.66±0.25)	(39.52±0.31)
	1.404±.010	1.556±.012
9	(31.70±0.18)	(35.56±0.3)
	1.248±.007	1.400±.012
8	(27.74±0.18)	(31.60±0.31)
	1.092±.007	1.244±.012
7	(23.77±0.18)	(27.64±0.3)
	.936±.007	1.088±.012
6	(19.81±0.13)	(23.67±0.25)
	.780±.005	.932±.011
5	(15.85±0.13)	(19.71±0.25)
	.624±.005	.776±.010
4	(11.89±0.13)	(15.75±0.25)
	.468±.005	.620±.010
3	(7.92±0.13)	(11.79±0.25)
	.312±.005	.464±.010

No OF
CCTS



IN VOID POS'N
NO TERMINAL SUPPLIED

- NOTES:
1. THESE ASSEMBLIES STACKABLE END TO END ON (3.96)/.156 CENTRE TO CENTRE PROGRESSION.
 2. FOR CHARTS & PANEL DRILLING DETAILS SEE SHEET 2 AND SUBSEQUENT SHEETS.
 3. TERMINAL PULL OUT FORCE- 4lbs MIN.
 4. TERMINALS ARE LUBRICATED WITH MXI-3.
 5. CONNECTORS FOR USE WITH (1.14)/.045 SQ. OR RD. PINS
 6. THIS PART CONFORMS TO PROD.SPEC.99020-0087



REVISION #P-DATE
E2004-0792
P-SHEAHAN 04/03/98

4 : 1 x
G. HART 24/11/82
M GOONEY 26/11/98
MWILHITE 26/11/98
SE32151 .DGN SEE CHART SDAE-3215-***N*** I 0F 11

25
36
1/2

11 ZA
10 Z
9 Z
8 Z
7 Z
6 Z
5 ZA
4 ZA
3 ZA
2 Y
1 ZB

ZB

SHT. 1 OF 1		MRI-SDAE-3215-***N***			
MODIFICATION RECORD INDEX					
ECN	ISS.	DATE	INIT.	SHTS. AFFECTED	DESCRIPTION OF MOD.
MESL-077	F	2 .12.82	GH	ALL	REDRAW
MEML-112	G	26.4 .83	GH	ALL	REVISION
MEML-594	H	6 .6 .83	GH	ALL	VARIOUS
MEML-608	J	21.6 .83	GH	ALL	VARIOUS
MEML-681	K	31.8 .83	MAL	ALL	VARIOUS
MEML-901	L	25.6 .84	MC	ALL	VARIOUS
MEML-382	M	2 .10.84	MC	ALL	VARIOUS
MEML-509	N	29.5 .85	MC	ALL	VARIOUS
MEML-510	P	31.5 .85	MC	ALL	VARIOUS
MEML-1162	R	25.11.85	JP	ALL	VARIOUS
MEML-617	S	9 .1.86	MC	ALL	VARIOUS
MEML-625	T	20.1.86	MC	ALL	VARIOUS
E10010	U	11.1.91	POB	ALL	VARIOUS
E10018	V	18.1.91	POB	ALL	VARIOUS
E50203	W	08.12.94	JS	ALL	VARIOUS
E90137	Y	1.11.98	TM	ALL	REDRAWN ON CAD
E2001-0463	Z	1.11.00	MF	1,3,4,5,6,7,8,9,10,11	UPDATED BORDER
E2003-0992	ZA	03.05.29	PS	1	NEW PROD.SPEC.99020-0087 ADDED
MOLEX EUROPE			REVISE ONLY ON CAD SYSTEM		
THIS DRAWING CONTAINS INFORMATION THAT IS PROPRIETARY TO MOLEX INC. A SHOULD NOT BE USED WITHOUT WRITTEN PERMISSION			CROQUIS FILENAME		TITLE
NF0028			SE32151 . DGN		ZA

13		12		11		10		9		8		7		6		5		4		3		2		1		
PART No.	ENG No.	No. OF CCTS	LOCK RAMP	VOID CCT POS'N		PART No.	ENG No.	No. OF CCTS	LOCK RAMP	VOID CCT POS'N	CENTRE HOOK LOCATED BETWEEN CCT No's	PART No.	ENG No.	No. OF CCTS	LOCK RAMP	VOID CCT POS'N	CENTRE HOOK LOCATED BETWEEN CCT No's	PART No.	ENG No.	No. OF CCTS	LOCK RAMP	VOID CCT POS'N	CENTRE HOOK LOCATED BETWEEN CCT No's			
26-11-1034	AE-3215-CR3AC	3	YES	NONE		26-11-2038	AE-3215-HR3AC	3	NO	NONE	---	26-11-2033	AE-3215-HR3AC		YES	NONE	---									
↑ -1044	↑ -CR4AC	4	↑	↑		↑ -2048	↑ -H4AC	4	↑	↑	---	↑ -2043	↑ -HR4AC	4	↑	↑	---	26-11-2044	AE-3215-L4AC	4	NO	NONE	1&2 3&4			
-1054	-CR5AC	5				-2058	-H5AC	5			---	-2053	-HR5AC	5			---	↑ -2054	↑ -L5AC	5	↑	↑	1&2 4&5			
-1064	-CR6AC	6				-2068	-H6AC	6			---	-2063	-HR6AC	6			---	-2064	-L6AC	6			1&2 5&6			
-1074	-CR7AC	7				-2078	-H7AC	7			---	-2073	-HR7AC	7			---	-2074	-L7AC	7			1&2 6&7			
-1084	-CR8AC	8				-2088	-H8AC	8			4&5	-2083	-HR8AC	8			4&5	-2084	-L8AC	8			1&2 7&8			
-1094	-CR9AC	9				-2098	-H9AC	9			4&5	-2093	-HR9AC	9			4&5	-2094	-L9AC	9			1&2 5&6 8&9			
-1104	-CR10AC	10				-2108	-H10AC	10			5&6	-2103	-HR10AC	10			5&6	-2104	-L10AC	10			1&2 5&6 9&10			
-1114	-CR11AC	11				-2118	-H11AC	11			5&6	-2113	-HR11AC	11			5&6	-2114	-L11AC	11			1&2 6&7 10&11			
-1124	-CR12AC	12				-2128	-H12AC	12			4&5 8&9	-2123	-HR12AC	12			4&5 8&9	-2124	-L12AC	12			1&2 6&7 11&12			
-1134	-CR13AC	13				-2138	-H13AC	13			4&5 9&10	-2133	-HR13AC	13			4&5 9&10	-2134	-L13AC	13			1&2 6&7 12&13			
-1144	-CR14AC	14				-2148	-H14AC	14			5&6 9&10	-2143	-HR14AC	14			5&6 9&10	-2144	-L14AC	14			1&2 7&8 13&14			
-1154	-CR15AC	15				-2158	-H15AC	15			5&6 10&11	-2153	-HR15AC	15			5&6 10&11	-2154	-L15AC	15			1&2 7&8 14&15			
-1164	-CR16AC	16				-2168	-H16AC	16			6&7 11&12	-2163	-HR16AC	16			6&7 11&12	-2164	-L16AC	16			1&2 7&8 15&16			
-1174	-CR17AC	17				-2178	-H17AC	17			6&7 11&12	-2173	-HR17AC	17			6&7 11&12	-2174	-L17AC	17			1&2 7&8 16&17			
-1184	-CR18AC	18				-2188	-H18AC	18			6&7 10&11 15&16	-2183	-HR18AC	18			6&7 10&11 15&16	-2184	-L18AC	18			1&2 8&9 17&18			
↓ -1194	↓ -CR19AC	19	↓	↓		↓ -2198	↓ -H19AC	19	↓	↓	5&6 10&11 15&16	↓ -2193	↓ -HR19AC	19	↓	↓	5&6 10&11 15&16	↓ -2194	↓ -L19AC	19	↓	↓	1&2 8&9 18&19			
26-11-2204	AE-3215-CR20AC	20	YES	NONE		26-11-2208	AE-3215-HR20AC	20	NO	NONE	5&6 10&11 15&16	26-11-2203	AE-3215-HR20AC	20	YES	NONE	5&6 10&11 15&16	26-11-2204	AE-3215-L20AC	20	NO	NONE	1&2 9&10 19&20			
						38-00-0240	AE-3215-H6AC-51	6	NO	3,4	---	26-11-2057	AE-3215-HR5AC-51	5	YES	2,4	---									
						38-00-0241	AE-3215-H13AC-7	13	NO	7	4&5 9&10	38-00-0046	AE-3215-HR11AC-51	11	YES	3,6,9	5&6									
						38-00-0376	AE-3215-H11AC-51	11	NO	3,6,9	5&6	38-00-0059	AE-3215-HR6AC-51	6	YES	3,4	---									
												38-00-0060	AE-3215-HR13AC-7	13	YES	7	4&5 9&10									
												38-00-0061	AE-3215-HR13AC-51	13	YES	2,4,6 8,10,12	4&5 9&10									

PART NO. SEE CHART
DWG NO. SDAE-3215-***N***

FOR CONTINUATION OF VOIDS, SEE LAST DRAWING

HOUSING.
STYLE-CR

TERMINAL.
STYLE-C
DIM 'C' - (3.17±0.50)/.125±.020
DRILLING DETAIL 'D'
(SEE SHEET 2)

HOUSING.
STYLE-H

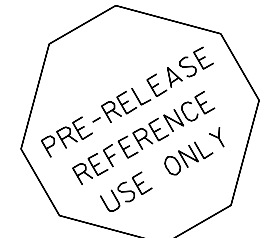
TERMINAL.
STYLE-C
DIM 'C' - (3.17±0.50)/.125±.020
DRILLING DETAIL 'D'

HOUSING.
STYLE-HR

TERMINAL.
STYLE-C
DIM 'C' - (3.17±0.50)/.125±.020
DRILLING DETAIL 'D'

HOUSING.
STYLE-L

TERMINAL.
STYLE-C
DIM 'C' - (3.17±0.50)/.125±.020
DRILLING DETAIL 'D'



NOTES:
1. TERMINAL MUST MEET MOLEX SOLDERABILITY SPEC. No. 152.

MATERIAL:
HOUSING- NYLON, 94V-2, COLOUR- NATURAL
TERMINAL- PHOS. BR, PLATING- (P902)
HOT TIN DIP 1-2.5um (.000040"- .000100")

LEAD FREE CONVERSION EC No. E2004-0792 DRWN: PSHEAHAN 04/03/08 CH'K: APPR:	QUALITY SYMBOLS	GENERAL TOLERANCES: (UNLESS SPECIFIED)		SCALE	DESIGN UNITS	DIMENSIONS:		SHT	REV
	MAJOR	mm	INCH	:	mm	mm	mm		
	CRITICAL	4 PLACES ±0.	±.		mm	mm	mm		
	C	3 PLACES ±0.	±.		mm	mm	mm		
		2 PLACES ±0.	±.		mm	mm	mm		
		1 PLACE ±0.	±.		mm	mm	mm		
		ANGULAR: ± 1/2°		DRAWN BY & DATE		THIRD ANGLE PROJECTION		REVISE ON CAD ONLY	
		DRAFT WHERE APPLICABLE MUST REMAIN WITHIN DIMENSIONS		G. HART 24/11/82		TITLE: CONNECTOR, K-K (3.96)/.156 WITH OR WITHOUT LOCKING WITH P.C. TAIL TERMINALS			
				CHECKED BY & DATE		MATERIAL NO.		DRAWING NO.	
				M. GOONEY 26/11/98		SDAE-3215-***N***		SHEET NO.	
				APPROVED BY & DATE		DRAWING NO.		SHEET NO.	
				MWILHITE 26/11/98		SDAE-3215-***N***		5 OF	
				CAD FILENAME		DRAWING NO.		SHEET NO.	
				SE32155.DGN		SDAE-3215-***N***		5 OF	
				THIS DRAWING CONTAINS INFORMATION THAT IS PROPRIETARY TO MOLEX INCORPORATED AND SHOULD NOT BE USED WITHOUT WRITTEN PERMISSION.				SIZE	
								C	