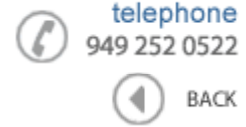




**Data Sheet**



Product Category: IF SAW Filter

Part Number  
820-IF70.0M-Y

Package  
20.2 x 12.6 Thru Hole

Application  
Base Station & Repeater

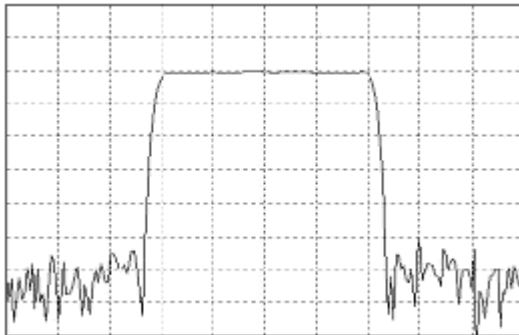
Last Modified  
May 02 2003

**TYPE :**

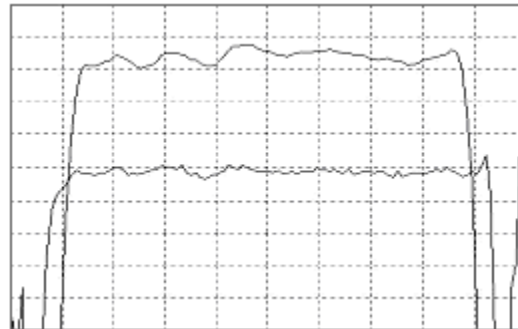
70.0 MHz Bandpass Filter  
12.1 MHz Bandwidth

**PART NUMBER :**

**820-IF70.0M-Y**



Horizontal : 3.0 MHz/Div  
Vertical : 10 dB/Div



Horizontal : 1.6 MHz/Div  
Vertical : 1 dB/Div  
Vertical : 100 ns/Div

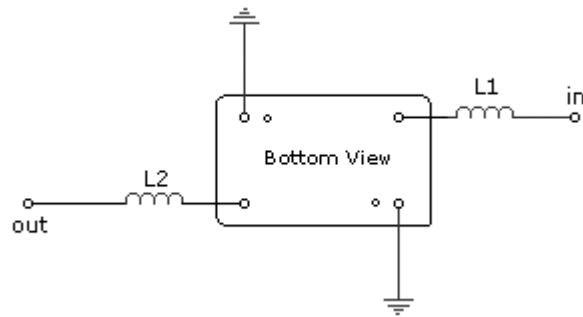
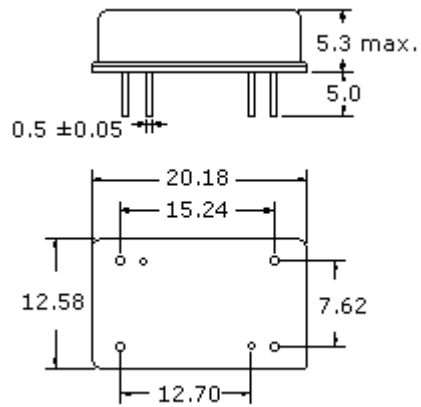
**OPERATING CONDITIONS / ELECTRICAL CHARACTERISTICS**

PARAMETERS	Minimum	Typical	Maximum	Units
Center Frequency	69.90	70.00	70.10	MHz
Insertion Loss	-	23.0	26.0	dB
1dB Bandwidth	11.6	11.9	-	MHz
3dB Bandwidth	12.1	12.4	-	MHz
40dB Bandwidth	-	14.0	14.5	MHz
Passband Ripple	-	0.8	1.0	dB
Group Delay Variation	-	40	70	nsec
Absolute Delay	-	2.28	-	µsec
Ultimate Rejection	50	55	-	dB
Substrate Material	-	YZ-LN	-	-
Ambient Temperature	-	25	-	°C
Phase Linearity	-	4.5	7.0	degc

\* Custom SAW IF Filters available. Contact Oscilent for assistance.

**PACKAGE OUTLINE (mm)**

**TEST FIXTURE**



L1 = 150nH

L2 = 3.3nH

Source/Load Impedance = 50 ohms

**Oscilent Corporation** - CALL **949.252.0522**

17962 Sky Park Circle, Building D, Irvine, CA 92614, USA  
 Fax: 949.252.0599, E-Mail: Sales@Oscilent.com

**Part No.:** 820-IF70.0M-Y