



Data Sheet



Product Category: IF SAW Filter

Part Number
820-IF70.0M-G

Package
20.2 x 12.6 Thru Hole

Application
Base Station & Repeater

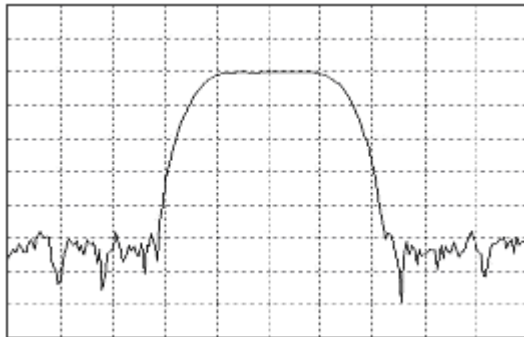
Last Modified
May 02 2003

TYPE :

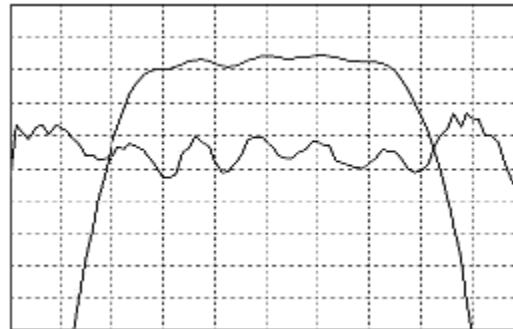
70.0 MHz Bandpass Filter
1.10 MHz Bandwidth

PART NUMBER :

820-IF70.0M-G



Horizontal : 0.5 MHz/Div
Vertical : 10 dB/Div



Horizontal : 0.2 MHz/Div
Vertical : 1 dB/Div
Vertical : 100 ns/Div

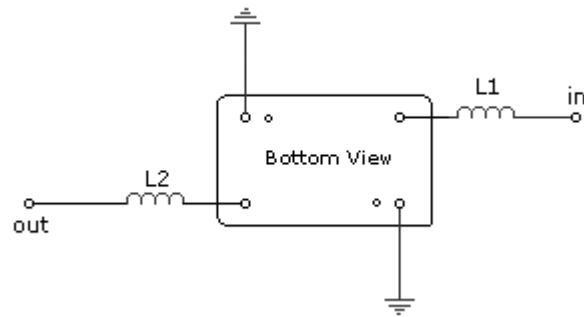
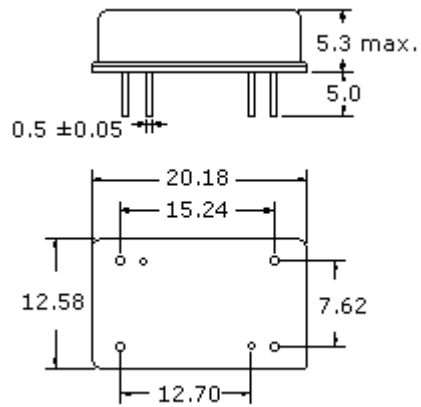
OPERATING CONDITIONS / ELECTRICAL CHARACTERISTICS

PARAMETERS	Minimum	Typical	Maximum	Units
Center Frequency	69.97	70.00	70.03	MHz
Insertion Loss	-	22.0	25.0	dB
1dB Bandwidth	0.95	1.08	-	MHz
3dB Bandwidth	1.1	1.27	-	MHz
40dB Bandwidth	-	2.11	2.3	MHz
Passband Ripple	-	0.35	0.7	dB
Group Delay Variation	-	80	150	nsec
Absolute Delay	-	2.54	-	µsec
Ultimate Rejection	50	55	-	dB
Substrate Material	-	Quartz	-	-
Ambient Temperature	-	25	-	°C
Phase Linearity	-	3.2	5	degc

* Custom SAW IF Filters available. Contact Oscilent for assistance.

PACKAGE OUTLINE (mm)

TEST FIXTURE



L1 = 180nH

L2 = 220nH

Source/Load Impedance = 50 ohms

Oscilent Corporation - CALL **949.252.0522**

17962 Sky Park Circle, Building D, Irvine, CA 92614, USA
 Fax: 949.252.0599, E-Mail: Sales@Oscilent.com

Part No.: 820-IF70.0M-G