

PLEASE CHECK WWW.MOLEX.COM FOR LATEST PART INFORMATION

Part Number: **0906634503**
Status: **Active**
Description: 2.54mm (.100") Pitch QF-50™ Right Angle, MIL Keying with Latch/Eject Levers, Shrouded Header, 50 Circuits

Documents:

[3D Model](#) [Product Specification PS-99020-0015 \(PDF\)](#)
[Drawing \(PDF\)](#) [RoHS Certificate of Compliance \(PDF\)](#)

Agency Certification

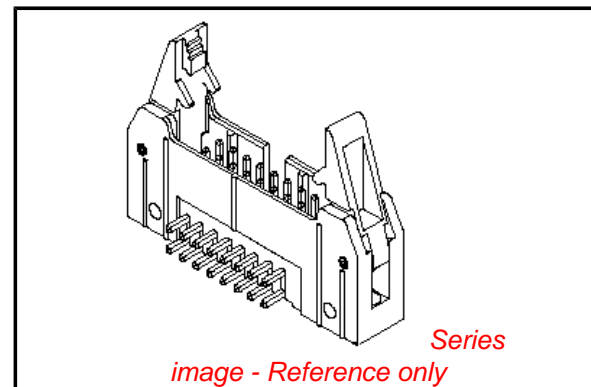
CSA LR19980
 UL E29179

General

Product Family Ribbon Cable / Wire Trap Connectors
 Series [90663](#)
 Comments Eject Levers
 Component Type PCB Header
 Glow-Wire Compliant No
 Product Name QF-50™

Physical

Circuits (Loaded) 50
 Color - Resin Black
 Durability (mating cycles max) 300
 Entry Angle 90° Angle
 Flammability 94V-0
 Lock to Mating Part None
 Material - Metal Brass
 Material - Plating Mating Gold
 Material - Plating Termination Tin
 Material - Resin Polyester
 Number of Rows 2
 PCB Locator No
 PCB Retention None
 PCB Thickness Recommended (in) 0.063 In
 PCB Thickness Recommended (mm) 1.60 mm
 Packaging Type Tray
 Pitch - Mating Interface (in) 0.100 In
 Pitch - Mating Interface (mm) 2.54 mm
 Pitch - Term. Interface (in) 0.100 In
 Pitch - Term. Interface (mm) 2.54 mm
 Plating min: Mating (µin) 10
 Plating min: Mating (µm) 0.25
 Plating min: Termination (µin) 118
 Plating min: Termination (µm) 3
 Polarized to PCB No
 Shrouded Fully
 Stackable No
 Surface Mount Compatible (SMC) No
 Temperature Range - Operating -25°C to +85°C
 Termination Interface: Style Through Hole
 Wire Insulation Diameter N/A
 Wire Size AWG N/A
 Wire/Cable Type Ribbon Cable



EU RoHS

**ELV and RoHS
Compliant**
REACH SVHC
 Not Reviewed
**Halogen-Free
Status**
Not Reviewed

China RoHS



**Need more information on product
environmental compliance?**

Email productcompliance@molex.com
 For a multiple part number RoHS Certificate of Compliance, [click here](#)

Please visit the [Contact Us](#) section for any non-product compliance questions.

Search Parts in this Series

90663Series

Mates With

Electrical

Current - Maximum per Contact
Voltage - Maximum

1A
250V AC/DC

Solder Process Data

Lead-free Process Capability

Wave Capable (TH only)

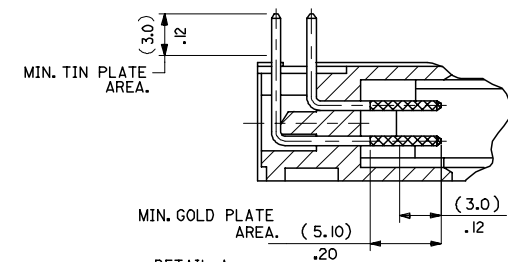
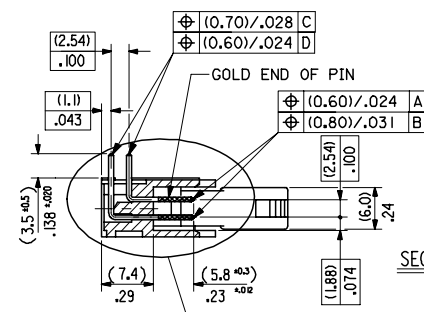
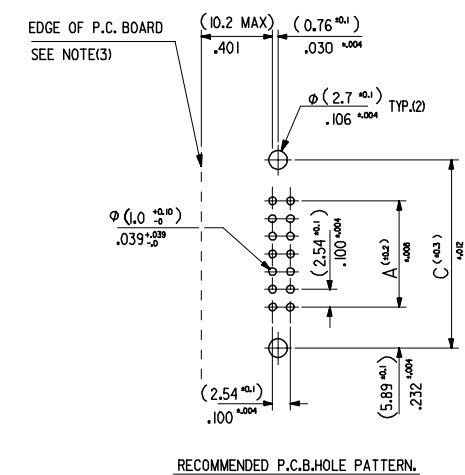
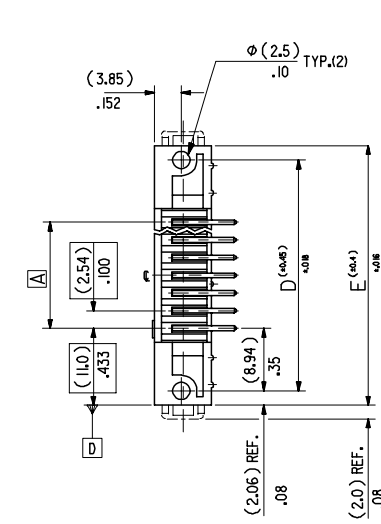
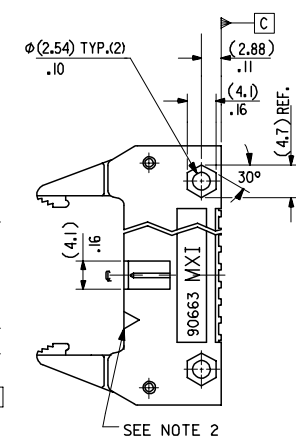
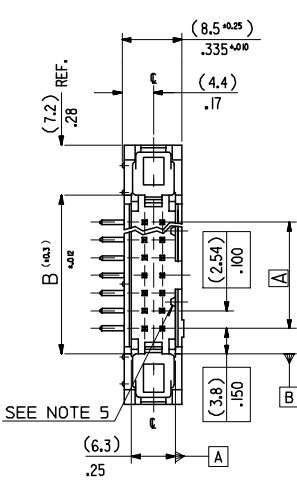
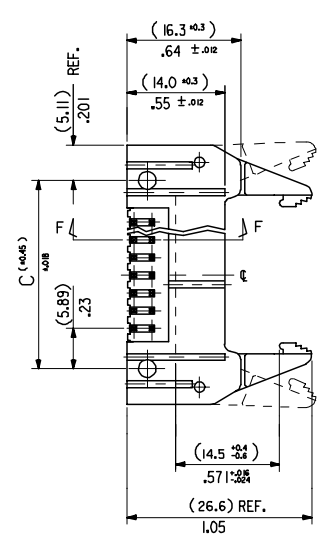
Material Info**Reference - Drawing Numbers**

Product Specification
Sales Drawing

PS-99020-0015
SDA-90663E

This document was generated on 04/13/2010

PLEASE CHECK WWW.MOLEX.COM FOR LATEST PART INFORMATION



DETAIL A
DIMENSIONS FOR SELECTIVE
PLATING'S, SCALE 4:1

- NOTES**
- MATERIAL**
HEADER : GLASS FILLED POLYESTER (UL 94V0), COLOUR - BLACK.
PINS : BRASS SIZE \square (0.635)/.025 .
LEVER : GLASS FILLED POLYESTER (UL 94V0), COLOUR - BLACK.
SPRING PINS : STEEL
 - COLOUR IDENTIFICATION MARK FOR PLATING OPTIONS.**
90663-4**3, (1um)/.039uin MIN. NICKEL UNDERPLATE. CONTACT AREA
G53 PLATING (0.25um)/.010uin MIN. GOLD. SOLDER AREA (3um)/.118uin MIN.
TIN. COLOUR MARK: BLUE.
 - 10.2mm MAX. TO EDGE OF PCB FOR DAISY CHAIN APPLICATIONS.
 - PRODUCT SPECIFICATION NO.: PS-99020-0015
 - THIS RIB IS NOT PRESENT ON
10 & 14 CKT PARTS
 - RECOMMENDED PCB THICKNESS 1.6mm

| | | | | | | |
|---------------|---------------|---------------|---------------|---------------|-------------------------|-----------------|
| (60.96)/2.400 | (68.56)/2.700 | (72.74)/2.864 | (78.84)/3.104 | (82.96)/3.266 | 90663-4503 | 50 |
| (48.26)/1.900 | (55.86)/2.200 | (60.04)/2.364 | (66.14)/2.604 | (70.26)/2.766 | 90663-4403 | 40 |
| (17.78)/.700 | (25.38)/1.000 | (29.56)/1.164 | (35.66)/1.404 | (39.78)/1.566 | 90663-4163 | 16 |
| (10.16)/.400 | (17.76)/.700 | (21.94)/.864 | (28.04)/1.104 | (32.16)/1.266 | 90663-4103 | 10 |
| A | B | C | D | E | ENG. NO. G53 PLATING | NO. OF CKTS. |

| | | | | | | |
|--|---|--|--|--|---|--|
| ADDED NOTE 6 EC NO. E2008-0129 DRAWN BY: DRW:NBIBRYNES CHKD: 2007/09/13 APPR: EOMAHONY 2007/09/14 | QUALITY SYMBOLS $\nabla=0$ $\nabla=0$ | GENERAL TOLERANCES (UNLESS SPECIFIED) mm INCH 4 PLACES ± --- ± --- 3 PLACES ± --- ± .008 2 PLACES ± 0.20 ± .008 1 PLACE ± 0.20 ± --- ANGULAR ± 2 ° | DIMENSION STYLE MM/IN DRAWN BY: CPHEHIR DATE: 2000/09/15 CHECKED BY: ROCONNOR DATE: 2000/09/15 APPROVED BY: MWILHITE DATE: 2000/09/15 | SCALE 2:1 DESIGN UNITS METRIC THIRD ANGLE PROJECTION | QF50 SRD HDR RA SRF W/ELV .25 AU | |
| | | | | | MOLEX INCORPORATED DOCUMENT NO. SDA-90663E SHEET NO. 6 OF 9 | |

DRAFT WHERE APPLICABLE MUST REMAIN WITHIN DIMENSIONS

SEE CHART

THIS DRAWING CONTAINS INFORMATION THAT IS PROPRIETARY TO MOLEX INCORPORATED AND SHOULD NOT BE USED WITHOUT WRITTEN PERMISSION