

PLEASE CHECK WWW.MOLEX.COM FOR LATEST PART INFORMATION

Part Number: [0737711190](#)
Status: **Active**
Overview: [hdm](#)
Description: 2.00mm (.079") Pitch HDM® Board-to-Board Stacking Header, High Rise Vertical, SMC, Press-Fit, Guide Pin Option, 144 Circuits

Documents:

[Drawing \(PDF\)](#) [RoHS Certificate of Compliance \(PDF\)](#)
[Product Specification PS-73780-999 \(PDF\)](#)

Agency Certification

CSA LR19980

General

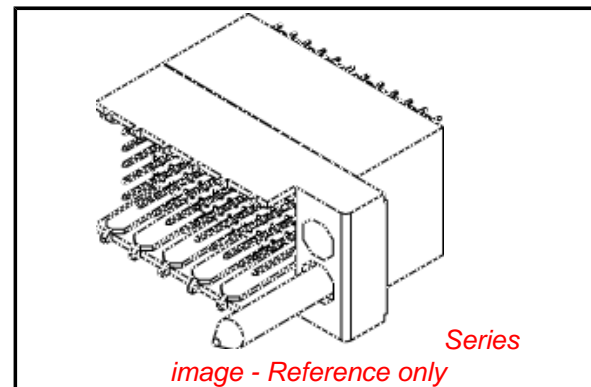
Product Family Backplane Connectors
 Series [73771](#)
 Application Midplane
 Component Type PCB Header
 Overview [hdm](#)
 Product Name HDM®
 Style N/A

Physical

Circuits (Loaded) 144
 Circuits (maximum) 144
 Color - Resin Black
 Durability (mating cycles max) 250
 Flammability 94V-0
 Keying to Mating Part Yes
 Material - Metal Phosphor Bronze, Stainless Steel
 Material - Plating Mating Gold
 Material - Plating Termination Tin-Lead
 Material - Resin High Temperature Thermoplastic
 Number of Columns 24
 Number of Pairs Open Pin Field
 Number of Rows 6
 Orientation Vertical
 PCB Retention Yes
 PCB Thickness Recommended (in) 0.098 In
 PCB Thickness Recommended (mm) 2.50 mm
 Packaging Type Tube
 Pitch - Mating Interface (in) 0.079 In
 Pitch - Mating Interface (mm) 2.00 mm
 Plating min: Mating (µin) 30
 Plating min: Mating (µm) 0.75
 Plating min: Termination (µin) 15
 Plating min: Termination (µm) 0.375
 Polarized to PCB No
 Surface Mount Compatible (SMC) Yes
 Temperature Range - Operating -55°C to +105°C
 Termination Interface: Style Through Hole - Compliant Pin

Electrical

Current - Maximum per Contact 1A
 Data Rate 1.0 Gbps
 Voltage - Maximum 250V AC



EU RoHS

ELV and RoHS Compliant
REACH SVHC Contains SVHC: No
Halogen-Free Status

China RoHS



Need more information on product environmental compliance?

Email productcompliance@molex.com
 For a multiple part number RoHS Certificate of Compliance, [click here](#)

Please visit the [Contact Us](#) section for any non-product compliance questions.

Search Parts in this Series

[73771Series](#)

Mates With

[73632 HDM PLUS® Board-to-Board Daughterboard Receptacle](#), [73780 HDM® Board-to-Board Daughtercard Receptacle](#)

Application Tooling | FAQ

Tooling specifications and manuals are found by selecting the products below. Crimp Height Specifications are then contained in the Application Tooling Specification document.

Global

Description	Product #
HDM® Backplane Insertion Signal Contact Tool	0621001400
HDM® Backplane Insertion Head for 144 Positions Extraction Tool	0622005703 0621001000

Material Info

Reference - Drawing Numbers

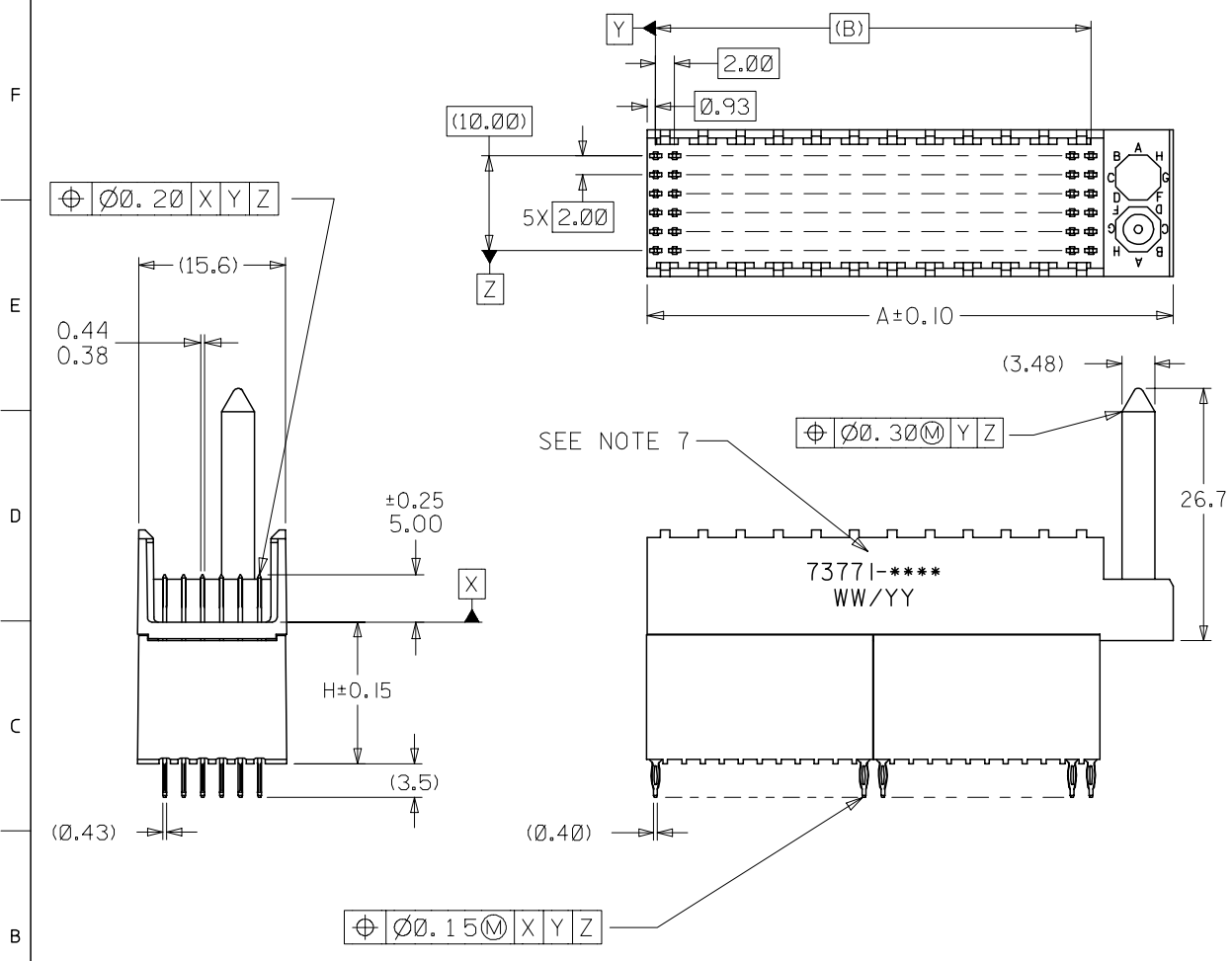
Packaging Specification	PK-70873-0870
Product Specification	PS-73780-999
Sales Drawing	SD-73771-002

HDM and High Density Metric are trademarks of Amphenol Corporation

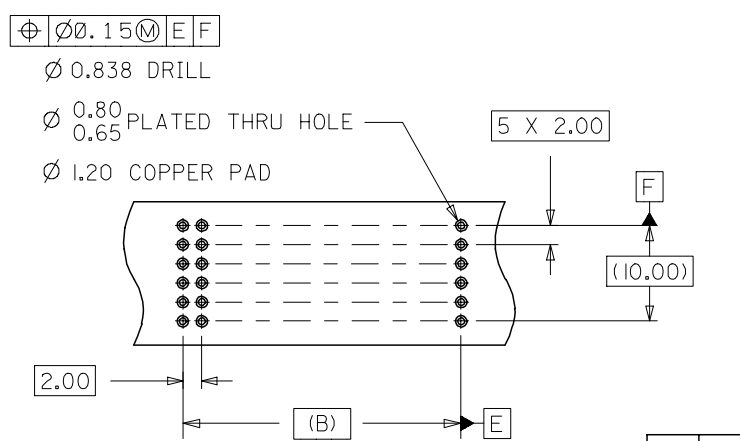
This document was generated on 05/14/2010

PLEASE CHECK WWW.MOLEX.COM FOR LATEST PART INFORMATION

10 9 8 7 6 5 4 3 2 1



- NOTES:
1. MATERIALS: HOUSING-LIQUID CRYSTAL POLYMER (LCP), GLASS-FILLED UL 94V-0, COLOR: BLACK, TERMINAL: PHOSPHOR BRONZE
 2. FINISH: SELECTIVE GOLD (AU) IN CONTACT AREA, 0.76 MICROMETER MINIMUM THICKNESS; SELECTIVE TIN (Sn) ON TAILS, 0.38 MICROMETER MINIMUM THICKNESS; NICKEL (Ni) UNDERPLATE OVERALL.
 3. THIS PART CONFORMS TO MOLEX PRODUCT SPECIFICATION: PS-73780-999.
 4. DIMENSIONS ARE IN MILLIMETERS
 5. RECOMMENDED PCB THICKNESS: 2.50 MINIMUM
 6. PACKAGE PER PK-70837-0870, PK-70873-0871, OR PK-70873-00875
 7. PART MARKED WITH PART NUMBER AND DATE CODE APPROXIMATELY WHERE SHOWN.



2	A
1	A
SHT	REV

BACKPLANE HOLE PATTERN

ASSEMBLY P/N	TOTAL NUMBER OF SIGNAL CONTACTS	DIM "A"	DIM "B"	DIM "H"
73771-019*	72	31.6	22.00	15.05
73771-029*	72	31.6	22.00	6.05
73771-039*	72	31.6	22.00	10.05
73771-119*	144	55.6	46.00	15.05
73771-129*	144	55.6	46.00	6.05
73771-139*	144	55.6	46.00	10.05

INITIAL RELEASE
 EC NO: UCP2005-2847
 DRWN: MIBARRA 2005/07/25
 CHKD: BSMART 2005/07/26
 APPR: SMILLER 2005/07/27

QUALITY SYMBOLS
 ▽=0
 ▽=0

DESCRIPTION
 A

	GENERAL TOLERANCES (UNLESS SPECIFIED)	
	mm	INCH
4 PLACES	± ---	± ---
3 PLACES	± ---	± ---
2 PLACES	± 0.05	± ---
1 PLACE	± 0.10	± ---
ANGULAR ±1/2°		

DIMENSION STYLE		SCALE	DESIGN UNITS	THIRD ANGLE PROJECTION
MM ONLY		2:1	METRIC	☉
DRAWN BY	DATE	TITLE		
MIBARRA	05/07/06	SALES ASSY HDM BACKPLANE STACKING MODULE POLAR/ GUIDE OPTION PRESSFIT		
CHECKED BY	DATE	MOLEX INCORPORATED		
BSMART	05/07/06	MATERIAL NO. SEE TABLE		
APPROVED BY	DATE	DOCUMENT NO. SD-73771-002		
SMILLER	05/07/06	SHEET NO. 1 OF 2		

DRAFT WHERE APPLICABLE MUST REMAIN WITHIN DIMENSIONS

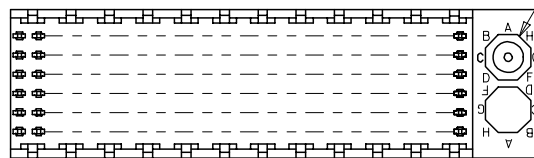
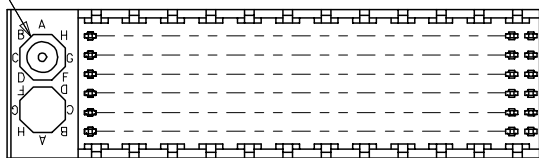
SIZE B THIS DRAWING CONTAINS INFORMATION THAT IS PROPRIETARY TO MOLEX INCORPORATED AND SHOULD NOT BE USED WITHOUT WRITTEN PERMISSION

9 8 7 6 5 4 3 2 1

10 9 8 7 6 5 4 3 2 1

LOCATION A

LOCATION B



REF. MATERIAL NUMBER 73771-1100
GUIDE PIN IS IN LOCATION A

REF. MATERIAL NUMBER 73771-1101
GUIDE PIN IS IN LOCATION B

MATERIAL NUMBER ASSIGNMENT

73771- * * * *

0 = 72-CIRCUIT
1 = 144-CIRCUIT

1 = 15.05 STACKING HEIGHT
2 = 6.05 STACKING HEIGHT
3 = 10.05 STACKING HEIGHT

NUMBER	GUIDE POST LOCATION
0	A
1	B
2	N/A

NUMBER	PLATING
9	GOLD - TIN

INITIAL RELEASE EC NO: UCP2005-2847 DRWN: MIBARRA 2005/07/25 CHKD: BSMART 2005/07/26 APPR: SMILLER 2005/07/27	DESCRIPTION A	QUALITY SYMBOLS ▽=0 ▽=0	GENERAL TOLERANCES (UNLESS SPECIFIED)		DIMENSION STYLE MM ONLY		SCALE ---	DESIGN UNITS METRIC	THIRD ANGLE PROJECTION		
			4 PLACES	± ---	± ---	DRAWN BY	DATE	TITLE			
			3 PLACES	± ---	± ---	MIBARRA	05/07/06	SALES ASSY HDM BACKPLANE STACKING MODULE POLAR/ GUIDE OPTION PRESSFIT			
2 PLACES	± ---	± ---	CHECKED BY	DATE	MOLEX INCORPORATED						
1 PLACE	± ---	± ---	BSMART	05/07/06	MATERIAL NO. SD-73771-002						
ANGULAR ±1/2°			APPROVED BY	DATE	SHEET NO.						
			SMILLER	05/07/06	2 OF 2						
DRAFT WHERE APPLICABLE MUST REMAIN WITHIN DIMENSIONS			SEE TABLE		THIS DRAWING CONTAINS INFORMATION THAT IS PROPRIETARY TO MOLEX INCORPORATED AND SHOULD NOT BE USED WITHOUT WRITTEN PERMISSION						

9 8 7 6 5 4 3 2 1