

**PLEASE CHECK WWW.MOLEX.COM FOR LATEST PART INFORMATION**

**Part Number:** [0002081008](#)  
**Status:** **Active**  
**Overview:** [mlx](#)  
**Description:** MLX Crimp Terminal 42024, 14-20 AWG, Bag Selective Gold (Au)

**Documents:**

[Drawing \(PDF\)](#) [RoHS Certificate of Compliance \(PDF\)](#)  
[Product Specification PSX-42022-0002 \(PDF\)](#)

**General**

|                         |                       |
|-------------------------|-----------------------|
| Product Family          | Crimp Terminals       |
| Series                  | <a href="#">42024</a> |
| Crimp Quality Equipment | Yes                   |
| Overview                | <a href="#">mlx</a>   |
| Product Name            | MLX™                  |

**Physical**

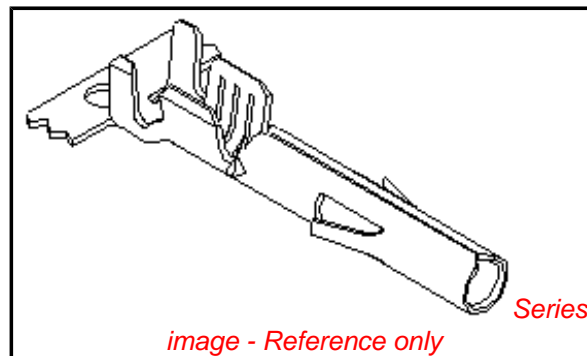
|                           |                          |
|---------------------------|--------------------------|
| Gender                    | Female                   |
| Material - Metal          | Phosphor Bronze          |
| Material - Plating Mating | Gold                     |
| Packaging Type            | Bag                      |
| Wire Insulation Diameter  | 1.52-3.30mm (.060-.130") |
| Wire Size AWG             | 14, 16, 18, 20           |
| Wire Size mm²             | N/A                      |

**Material Info**

|                 |            |
|-----------------|------------|
| Old Part Number | 42024-1B2L |
|-----------------|------------|

**Reference - Drawing Numbers**

|                       |                |
|-----------------------|----------------|
| Product Specification | PSX-42022-0002 |
| Sales Drawing         | SD-42024-****  |



**EU RoHS**

**ELV and RoHS  
Compliant**  
**REACH SVHC  
Not Reviewed**  
**Halogen-Free  
Status  
Not Reviewed**

**China RoHS**



**Need more information on product  
environmental compliance?**

Email [productcompliance@molex.com](mailto:productcompliance@molex.com)  
 For a multiple part number RoHS Certificate of Compliance, [click here](#)

Please visit the [Contact Us](#) section for any non-product compliance questions.

**Search Parts in this Series**

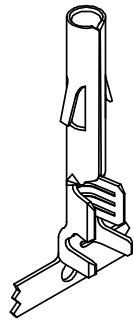
[42024Series](#)

**Application Tooling | [FAQ](#)**

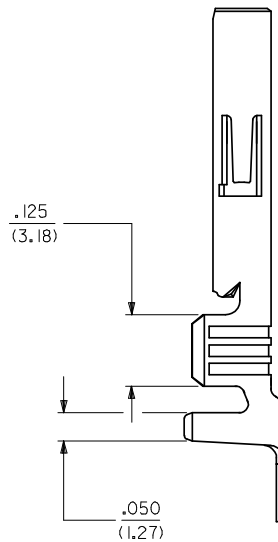
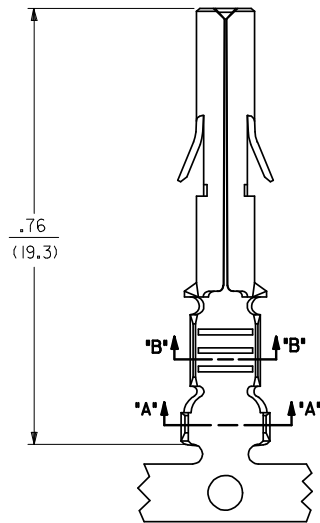
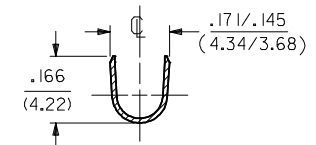
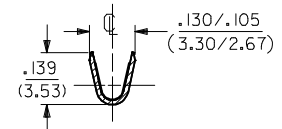
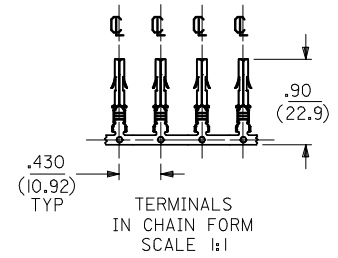
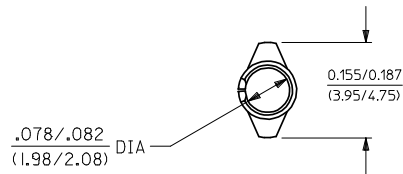
*Tooling specifications and manuals are found by selecting the products below. Crimp Height Specifications are then contained in the Application Tooling Specification document.*

**Global**

| Description     | Product #                  |
|-----------------|----------------------------|
| HAND CRIMP TOOL | <a href="#">0638116800</a> |
| Extraction Tool | <a href="#">0011010168</a> |



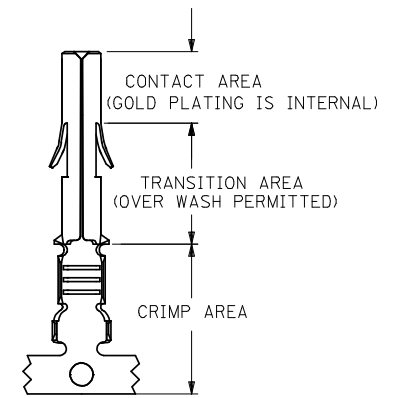
SOCKET TERMINAL  
42024-\*\*\*



SEE SHEET 2 FOR CHART, MATERIAL, PLATING, NOTES, AND CRIMP OPTIONS

|   |                               |                                       |        |   |                      |                  |  |
|---|-------------------------------|---------------------------------------|--------|---|----------------------|------------------|--|
| ENTER DESCRIPTION<br>EC NO: 12008-0359<br>DRAWN BY: 2008/03/03<br>CHKD: VINU 2008/03/03<br>APPR: KPRASAD 2008/03/03           | QUALITY SYMBOLS<br>▽=0<br>▽=0 | GENERAL TOLERANCES (UNLESS SPECIFIED) |        | DIMENSION STYLE                               | SCALE                | DESIGN UNITS     | THIRD ANGLE PROJECTION                           |
|   |                               | mm                                    | INCH   | IN/MM   | 4:1                  | INCH             | ☉ □  |
| REV   | DESCRIPTION                   | 4 PLACES                              | ± ---  | ± ---   | DRAWN BY: SUDHIR     | DATE: 2004/09/27 | TITLE<br>RMINAL, SOCKET<br>84/(2.13) DIA. SERIES |
|   |                               | 3 PLACES                              | ± ---  | ± .010  | CHECKED BY: KPRASAD  | DATE: 2004/09/27 |  |
|   |                               | 2 PLACES                              | ± 0.25 | ± .015  | APPROVED BY: KPRASAD | DATE: 2004/09/27 | MATERIAL NO.<br>DOCUMENT NO.<br>SHEET NO.        |
|   |                               | 1 PLACE                               | ± 0.38 | ± ---   | SEE CHART            |                  |  |
| DRAFT WHERE APPLICABLE<br>MUST REMAIN<br>WITHIN DIMENSIONS  |                               | ANGULAR ±1/2°                         |        | MATERIAL NO.<br>DOCUMENT NO.<br>SD-42024-**** |                      | 1 OF 2           |  |
| THIS DRAWING CONTAINS INFORMATION THAT IS PROPRIETARY TO MOLEX INCORPORATED AND SHOULD NOT BE USED WITHOUT WRITTEN PERMISSION |                               |                                       |        |   |                      |                  |  |

| ENG. NO.   | EDP NO.     | FINISH (REF) | CONTACT AREA (REF) | CRIMP AREA (REF)      | MATERIAL (REF) | WIRE SIZE   | INSULATION DIA. |
|------------|-------------|--------------|--------------------|-----------------------|----------------|-------------|-----------------|
| 42024-IA1  | 002-08-1001 | SDES-88-P901 | ----               | ----                  | C26000         | #14-#20 AWG | .060-.130       |
| 42024-IA1L | 002-08-1002 | SDES-88-P901 | ----               | ----                  | C26000         | #14-#20 AWG | .060-.130       |
| 42024-IB1  | 002-08-1003 | SDES-88-P901 | ----               | ----                  | C51000         | #14-#20 AWG | .060-.130       |
| 42024-IB1L | 002-08-1004 | SDES-88-P901 | ----               | ----                  | C51000         | #14-#20 AWG | .060-.130       |
| 42024-IA2  | 002-08-1005 | SEE NOTE 5   | .000030 MIN GOLD   | .000100 MIN MATTE TIN | C26000         | #14-#20 AWG | .060-.130       |
| 42024-IA2L | 002-08-1006 | SEE NOTE 5   | .000030 MIN GOLD   | .000100 MIN MATTE TIN | C26000         | #14-#20 AWG | .060-.130       |
| 42024-IB2  | 002-08-1007 | SEE NOTE 5   | .000030 MIN GOLD   | .000100 MIN MATTE TIN | C51000         | #14-#20 AWG | .060-.130       |
| 42024-IB2L | 002-08-1008 | SEE NOTE 5   | .000030 MIN GOLD   | .000100 MIN MATTE TIN | C51000         | #14-#20 AWG | .060-.130       |

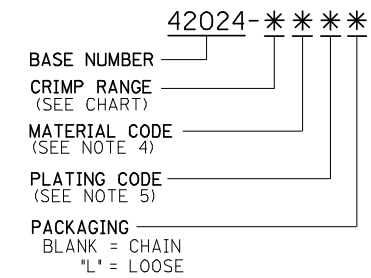


**PLATING REGIONS**  
 APPLIES TO GOLD PLATED TERMINALS ONLY

**NOTES:**

- SOCKET TERMINALS FOR USE WITH THE .084/(2.13) SERIES HOUSINGS:  
 PLUG (42021-\*\*)  
 CAP (42022-\*\*)
- SOCKET TERMINALS MATE WITH PIN TERMINALS: .084/(2.13) DIA. SERIES (42023-\*\*\*\*\*).
- TERMINALS FINISHED IN CHAIN UNLESS SPECIFIED LOOSE. 'L' SUFFIX INDICATES LOOSE FORM. (SEE TABLE)
- MATERIAL: .012/(0.30) THICK STRIP:  
 A = BRASS, \*C26000, PER SMES-124-C7.  
 B = PHOSPHOR BRONZE, \*C51000, PER SMES-124-E7.
- FINISH:  
 1 = HOT TIN DIP 20 m.l./(.51 MICRONS) MINIMUM (PER SDES-88-P901).  
 2 = 30 (M.I) / 0.75 MICRONS) MIN SELECT GOLD AND 100 (M.I) (2.50 MICRON) MIN SELECT TIN (MATTE) OVER 50 (M.I) (1.25 MICRONS) MIN NICKEL OVERALL
- CRIMP RANGE: SEE CHART.
- PRODUCT SPECIFICATION PS-42022-0001 APPLIES.

**LEGEND:**



| <b>ENTER DESCRIPTION</b><br>EC NO: 12008-0359<br>DRW: SUDHIR 2008/03/03<br>CHKD: VINU 2008/03/03<br>APPR: KPRASAD 2008/03/03<br>REV | <b>QUALITY SYMBOLS</b><br>▽=0<br>▽=0 | <b>GENERAL TOLERANCES (UNLESS SPECIFIED)</b><br><table border="1"> <tr> <th></th> <th>mm</th> <th>INCH</th> </tr> <tr> <td>4 PLACES</td> <td>±.005</td> <td>±.0005</td> </tr> <tr> <td>3 PLACES</td> <td>±.005</td> <td>±.0005</td> </tr> <tr> <td>2 PLACES</td> <td>±.005</td> <td>±.0005</td> </tr> <tr> <td>1 PLACE</td> <td>±.005</td> <td>±.0005</td> </tr> <tr> <td colspan="3">ANGULAR ±.005°</td> </tr> </table> |   | mm                                       | INCH  | 4 PLACES  | ±.005  | ±.0005 | 3 PLACES | ±.005 | ±.0005 | 2 PLACES | ±.005 | ±.0005 | 1 PLACE | ±.005 | ±.0005 | ANGULAR ±.005° |  |  | <b>DIMENSION STYLE</b><br>IN/MM | <b>SCALE</b><br>--- | <b>DESIGN UNITS</b><br>INCH | THIRD ANGLE PROJECTION |
|---|--------------------------------------|--|---|--|---|-----------|--------|--------|----------|-------|--------|----------|-------|--------|---------|-------|--------|----------------|--|--|---------------------------------|---------------------|-----------------------------|------------------------|
|   |                                      | mm   | INCH                                    |  |   |           |        |        |          |       |        |          |       |        |         |       |        |                |  |  |                                 |                     |                             |                        |
|   | 4 PLACES                             | ±.005  | ±.0005                                  |  |   |           |        |        |          |       |        |          |       |        |         |       |        |                |  |  |                                 |                     |                             |                        |
|   | 3 PLACES                             | ±.005  | ±.0005                                  |  |   |           |        |        |          |       |        |          |       |        |         |       |        |                |  |  |                                 |                     |                             |                        |
| 2 PLACES  | ±.005                                | ±.0005   |   |  |   |           |        |        |          |       |        |          |       |        |         |       |        |                |  |  |                                 |                     |                             |                        |
| 1 PLACE   | ±.005                                | ±.0005   |   |  |   |           |        |        |          |       |        |          |       |        |         |       |        |                |  |  |                                 |                     |                             |                        |
| ANGULAR ±.005°  |                                      |  |   |  |   |           |        |        |          |       |        |          |       |        |         |       |        |                |  |  |                                 |                     |                             |                        |
| DRAFT WHERE APPLICABLE MUST REMAIN WITHIN DIMENSIONS  |                                      | DRAWN BY: SUDHIR<br>DATE: 2004/09/27   | CHECKED BY: KPRASAD<br>DATE: 2004/09/27 | APPROVED BY: KPRASAD<br>DATE: 2004/09/27 | TITLE: RMINAL, SOCKET 84/(2.13) DIA. SERIES |           |        |        |          |       |        |          |       |        |         |       |        |                |  |  |                                 |                     |                             |                        |
| SEE CHART   |                                      | MATERIAL NO.   |   | DOCUMENT NO.                             |   | SHEET NO. |        |        |          |       |        |          |       |        |         |       |        |                |  |  |                                 |                     |                             |                        |
| SIZE A2   |                                      | THIS DRAWING CONTAINS INFORMATION THAT IS PROPRIETARY TO MOLEX INCORPORATED AND SHOULD NOT BE USED WITHOUT WRITTEN PERMISSION  |   |  |   |           | 2 OF 2 |        |          |       |        |          |       |        |         |       |        |                |  |  |                                 |                     |                             |                        |