

**PLEASE CHECK WWW.MOLEX.COM FOR LATEST PART INFORMATION**

**Part Number:** [0002081001](#)  
**Status:** **Active**  
**Overview:** [mlx](#)  
**Description:** MLX Crimp Terminal 42024, 14-20 AWG, Reel, Tin (Sn)

**Documents:**

[Drawing \(PDF\)](#) [RoHS Certificate of Compliance \(PDF\)](#)  
[Product Specification PS-42022-0001 \(PDF\)](#)

**General**

|                         |                       |
|-------------------------|-----------------------|
| Product Family          | Crimp Terminals       |
| Series                  | <a href="#">42024</a> |
| Crimp Quality Equipment | Yes                   |
| Overview                | <a href="#">mlx</a>   |
| Product Name            | MLX™                  |

**Physical**

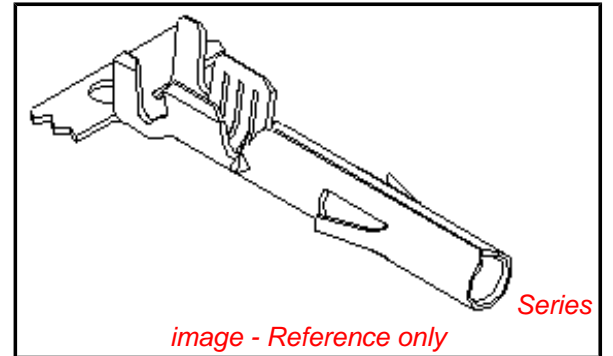
|                                |                          |
|--------------------------------|--------------------------|
| Gender                         | Female                   |
| Material - Metal               | Brass                    |
| Material - Plating Mating      | Tin                      |
| Material - Plating Termination | Tin                      |
| Packaging Type                 | Reel                     |
| Plating min: Mating (µin)      | 20                       |
| Plating min: Mating (µm)       | 0.50                     |
| Plating min: Termination (µin) | 20                       |
| Plating min: Termination (µm)  | 0.50                     |
| Termination Interface: Style   | Crimp or Compression     |
| Wire Insulation Diameter       | 1.52-3.30mm (.060-.130") |
| Wire Size AWG                  | 14, 16, 18, 20           |
| Wire Size mm²                  | N/A                      |

**Material Info**

|                 |           |
|-----------------|-----------|
| Old Part Number | 42024-1A1 |
|-----------------|-----------|

**Reference - Drawing Numbers**

|                       |               |
|-----------------------|---------------|
| Product Specification | PS-42022-0001 |
| Sales Drawing         | SD-42024-**** |



**EU RoHS**

**ELV and RoHS  
Compliant**  
**REACH SVHC  
Contains SVHC: No**  
**Halogen-Free  
Status  
Halogen-Free**

**China RoHS**



**Need more information on product  
environmental compliance?**

Email [productcompliance@molex.com](mailto:productcompliance@molex.com)  
 For a multiple part number RoHS Certificate of Compliance, [click here](#)

Please visit the [Contact Us](#) section for any non-product compliance questions.

**Search Parts in this Series**

[42024Series](#)

**Application Tooling | [FAQ](#)**

*Tooling specifications and manuals are found by selecting the products below. Crimp Height Specifications are then contained in the Application Tooling Specification document.*

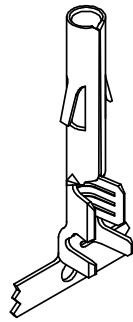
**Global**

| Description  | Product #                  |
|--|----------------------------|
| FineAdjust™<br>Applicator for MXL™<br>Crimp Terminals,<br>14-20 AWG wire with<br>2.08 to 2.50mm dia.<br>Insulation | <a href="#">0639007500</a> |
| FineAdjust™<br>Applicator for MXL™<br>Crimp Terminals,<br>14-20 AWG wire with<br>2.41 to 2.95mm dia.<br>Insulation | <a href="#">0639009800</a> |
| FineAdjust™<br>Applicator for MXL™   | <a href="#">0639009900</a> |

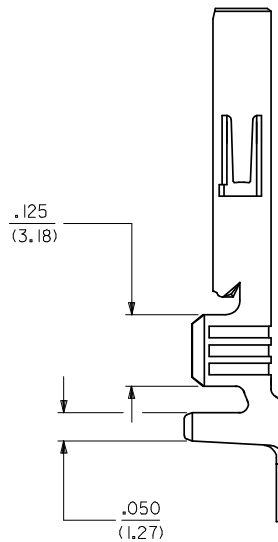
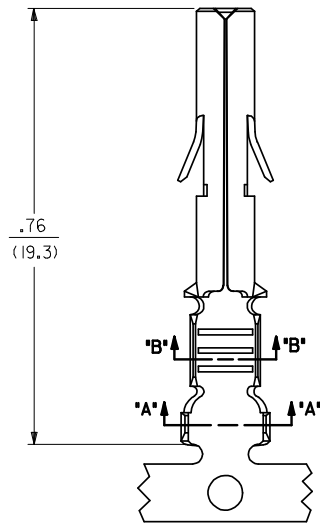
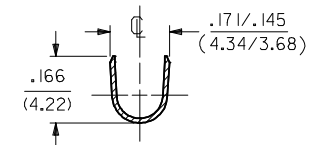
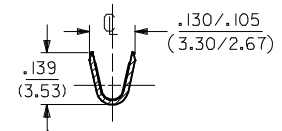
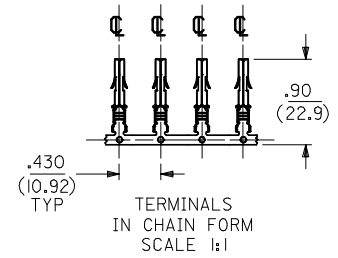
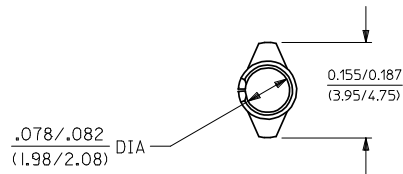
|   |  |
|---|--|
| Crimp Terminals,<br>14-20 AWG wire with<br>2.65 to 3.30mm dia.<br>Insulation<br>Tooling Kit for<br>MiniFit Compliant Pin<br>Insertion | <u>0639107500</u>                      |
| T2 Terminator<br>Tooling Die for<br>MLX™ Crimp<br>Terminals, 14-20<br>AWG   | <u>0639109800</u>                      |
| T2 Terminator<br>Tooling Die for<br>MLX™ Crimp<br>Terminals, 14-20<br>AWG   | <u>0639109900</u>                      |
| HAND CRIMP TOOL<br>Extraction Tool  | <u>0638116800</u><br><u>0011010168</u> |

This document was generated on 05/17/2010

**PLEASE CHECK [WWW.MOLEX.COM](http://WWW.MOLEX.COM) FOR LATEST PART INFORMATION**



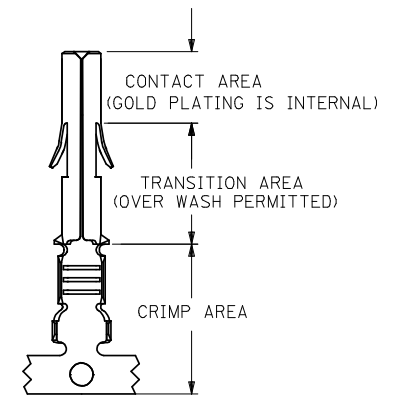
SOCKET TERMINAL  
42024-\*\*\*



SEE SHEET 2 FOR CHART, MATERIAL, PLATING, NOTES, AND CRIMP OPTIONS

| ENTER DESCRIPTION<br>EC NO: 12008-0359<br>DRAWN BY: 2008/03/03<br>CHKD: VINU 2008/03/03<br>APPR: KPRASAD 2008/03/03 | QUALITY SYMBOLS   | GENERAL TOLERANCES (UNLESS SPECIFIED)   | DIMENSION STYLE | SCALE   | DESIGN UNITS | THIRD ANGLE PROJECTION |            |                      |            |  |        |                           |        |                     |         |        |        |       |     |      |
|---|---|---|-----------------|---|--------------|------------------------|------------|----------------------|------------|--|--------|---------------------------|--------|---------------------|---------|--------|--------|-------|-----|------|
|   | $\nabla=0$<br>$\nabla=0$  | <table border="1"> <thead> <tr> <th></th> <th>mm</th> <th>INCH</th> </tr> </thead> <tbody> <tr> <td>4 PLACES</td> <td>± .010</td> <td>± .004</td> </tr> <tr> <td>3 PLACES</td> <td>± .015</td> <td>± .006</td> </tr> <tr> <td>2 PLACES</td> <td>± .025</td> <td>± .010</td> </tr> <tr> <td>1 PLACE</td> <td>± .038</td> <td>± .015</td> </tr> </tbody> </table> |                 | mm  | INCH         | 4 PLACES               | ± .010     | ± .004               | 3 PLACES   | ± .015   | ± .006 | 2 PLACES                  | ± .025 | ± .010              | 1 PLACE | ± .038 | ± .015 | IN/MM | 4:1 | INCH |
|   | mm  | INCH  |                 |   |              |                        |            |                      |            |  |        |                           |        |                     |         |        |        |       |     |      |
| 4 PLACES  | ± .010  | ± .004  |                 |   |              |                        |            |                      |            |  |        |                           |        |                     |         |        |        |       |     |      |
| 3 PLACES  | ± .015  | ± .006  |                 |   |              |                        |            |                      |            |  |        |                           |        |                     |         |        |        |       |     |      |
| 2 PLACES  | ± .025  | ± .010  |                 |   |              |                        |            |                      |            |  |        |                           |        |                     |         |        |        |       |     |      |
| 1 PLACE   | ± .038  | ± .015  |                 |   |              |                        |            |                      |            |  |        |                           |        |                     |         |        |        |       |     |      |
|   | <table border="1"> <thead> <tr> <th>DESCRIPTION</th> <th>DATE</th> </tr> </thead> <tbody> <tr> <td>DRAWN BY: SUDHIR</td> <td>2004/09/27</td> </tr> <tr> <td>CHECKED BY: KPRASAD</td> <td>2004/09/27</td> </tr> <tr> <td>APPROVED BY: KPRASAD</td> <td>2004/09/27</td> </tr> </tbody> </table> | DESCRIPTION   | DATE            | DRAWN BY: SUDHIR  | 2004/09/27   | CHECKED BY: KPRASAD    | 2004/09/27 | APPROVED BY: KPRASAD | 2004/09/27 | TITLE<br><b>RMINAL, SOCKET<br/>84/(2.13) DIA. SERIES</b> |        | <b>MOLEX INCORPORATED</b> |        | SHEET NO.<br>1 OF 2 |         |        |        |       |     |      |
| DESCRIPTION   | DATE  |   |                 |   |              |                        |            |                      |            |  |        |                           |        |                     |         |        |        |       |     |      |
| DRAWN BY: SUDHIR  | 2004/09/27  |   |                 |   |              |                        |            |                      |            |  |        |                           |        |                     |         |        |        |       |     |      |
| CHECKED BY: KPRASAD   | 2004/09/27  |   |                 |   |              |                        |            |                      |            |  |        |                           |        |                     |         |        |        |       |     |      |
| APPROVED BY: KPRASAD  | 2004/09/27  |   |                 |   |              |                        |            |                      |            |  |        |                           |        |                     |         |        |        |       |     |      |
|   | MATERIAL NO.<br><b>SEE CHART</b>  | DOCUMENT NO.<br><b>SD-42024-****</b>  |                 | THIS DRAWING CONTAINS INFORMATION THAT IS PROPRIETARY TO MOLEX INCORPORATED AND SHOULD NOT BE USED WITHOUT WRITTEN PERMISSION |              |                        |            |                      |            |  |        |                           |        |                     |         |        |        |       |     |      |

| ENG. NO.   | EDP NO.     | FINISH (REF) | CONTACT AREA (REF) | CRIMP AREA (REF)      | MATERIAL (REF) | WIRE SIZE   | INSULATION DIA. |
|------------|-------------|--------------|--------------------|-----------------------|----------------|-------------|-----------------|
| 42024-IA1  | 002-08-1001 | SDES-88-P901 | ----               | ----                  | C26000         | #14-#20 AWG | .060-.130       |
| 42024-IA1L | 002-08-1002 | SDES-88-P901 | ----               | ----                  | C26000         | #14-#20 AWG | .060-.130       |
| 42024-IB1  | 002-08-1003 | SDES-88-P901 | ----               | ----                  | C51000         | #14-#20 AWG | .060-.130       |
| 42024-IB1L | 002-08-1004 | SDES-88-P901 | ----               | ----                  | C51000         | #14-#20 AWG | .060-.130       |
| 42024-IA2  | 002-08-1005 | SEE NOTE 5   | .000030 MIN GOLD   | .000100 MIN MATTE TIN | C26000         | #14-#20 AWG | .060-.130       |
| 42024-IA2L | 002-08-1006 | SEE NOTE 5   | .000030 MIN GOLD   | .000100 MIN MATTE TIN | C26000         | #14-#20 AWG | .060-.130       |
| 42024-IB2  | 002-08-1007 | SEE NOTE 5   | .000030 MIN GOLD   | .000100 MIN MATTE TIN | C51000         | #14-#20 AWG | .060-.130       |
| 42024-IB2L | 002-08-1008 | SEE NOTE 5   | .000030 MIN GOLD   | .000100 MIN MATTE TIN | C51000         | #14-#20 AWG | .060-.130       |



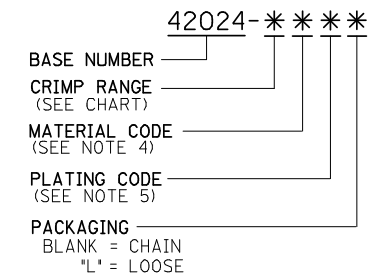
### PLATING REGIONS

APPLIES TO GOLD PLATED TERMINALS ONLY

**NOTES:**

- SOCKET TERMINALS FOR USE WITH THE .084/(2.13) SERIES HOUSINGS:  
 PLUG (42021-\*\*)  
 CAP (42022-\*\*)
- SOCKET TERMINALS MATE WITH PIN TERMINALS: .084/(2.13) DIA. SERIES (42023-\*\*\*\*).
- TERMINALS FINISHED IN CHAIN UNLESS SPECIFIED LOOSE. 'L' SUFFIX INDICATES LOOSE FORM. (SEE TABLE)
- MATERIAL: .012/(0.30) THICK STRIP:  
 A = BRASS, \*C26000, PER SMES-124-C7.  
 B = PHOSPHOR BRONZE, \*C51000, PER SMES-124-E7.
- FINISH:  
 1 = HOT TIN DIP 20 m.l./(.51 MICRONS) MINIMUM (PER SDES-88-P901).  
 2 = 30 (M.I) / 0.75 MICRONS) MIN SELECT GOLD AND 100 (M.I) (2.50 MICRON) MIN SELECT TIN (MATTE) OVER 50 (M.I) (1.25 MICRONS) MIN NICKEL OVERALL
- CRIMP RANGE: SEE CHART.
- PRODUCT SPECIFICATION PS-42022-0001 APPLIES.

**LEGEND:**



| <b>ENTER DESCRIPTION</b><br>EC NO: 12008-0359<br>DRW: SUDHIR 2008/03/03<br>CHKD: VINU 2008/03/03<br>APPR: KPRASAD 2008/03/03<br>REV | <b>QUALITY SYMBOLS</b><br>▽=0<br>▽=0 | <b>GENERAL TOLERANCES (UNLESS SPECIFIED)</b><br><table border="1"> <tr> <th></th> <th>mm</th> <th>INCH</th> </tr> <tr> <td>4 PLACES</td> <td>±.005</td> <td>±.0005</td> </tr> <tr> <td>3 PLACES</td> <td>±.005</td> <td>±.0005</td> </tr> <tr> <td>2 PLACES</td> <td>±.005</td> <td>±.0005</td> </tr> <tr> <td>1 PLACE</td> <td>±.005</td> <td>±.0005</td> </tr> <tr> <td colspan="3">ANGULAR ±.005°</td> </tr> </table> |                                       | mm  | INCH | 4 PLACES  | ±.005 | ±.0005 | 3 PLACES | ±.005 | ±.0005 | 2 PLACES | ±.005 | ±.0005 | 1 PLACE | ±.005 | ±.0005 | ANGULAR ±.005° |  |  | <b>DIMENSION STYLE</b><br>IN/MM | <b>SCALE</b><br>--- | <b>DESIGN UNITS</b><br>INCH | THIRD ANGLE PROJECTION |
|---|--------------------------------------|--|---------------------------------------|---|------|-----------|-------|--------|----------|-------|--------|----------|-------|--------|---------|-------|--------|----------------|--|--|---------------------------------|---------------------|-----------------------------|------------------------|
|   |                                      | mm   | INCH                                  |   |      |           |       |        |          |       |        |          |       |        |         |       |        |                |  |  |                                 |                     |                             |                        |
|   | 4 PLACES                             | ±.005  | ±.0005                                |   |      |           |       |        |          |       |        |          |       |        |         |       |        |                |  |  |                                 |                     |                             |                        |
|   | 3 PLACES                             | ±.005  | ±.0005                                |   |      |           |       |        |          |       |        |          |       |        |         |       |        |                |  |  |                                 |                     |                             |                        |
| 2 PLACES  | ±.005                                | ±.0005   |                                       |   |      |           |       |        |          |       |        |          |       |        |         |       |        |                |  |  |                                 |                     |                             |                        |
| 1 PLACE   | ±.005                                | ±.0005   |                                       |   |      |           |       |        |          |       |        |          |       |        |         |       |        |                |  |  |                                 |                     |                             |                        |
| ANGULAR ±.005°  |                                      |  |                                       |   |      |           |       |        |          |       |        |          |       |        |         |       |        |                |  |  |                                 |                     |                             |                        |
| <b>DRAFT WHERE APPLICABLE MUST REMAIN WITHIN DIMENSIONS</b>   |                                      | DRAWN BY DATE<br>SUDHIR 2004/09/27   | CHECKED BY DATE<br>KPRASAD 2004/09/27 | TITLE<br>RMINAL, SOCKET 84/(2.13) DIA. SERIES |      |           |       |        |          |       |        |          |       |        |         |       |        |                |  |  |                                 |                     |                             |                        |
| MATERIAL NO.  |                                      | APPROVED BY DATE<br>KPRASAD 2004/09/27   | MOLEX INCORPORATED                    |   |      |           |       |        |          |       |        |          |       |        |         |       |        |                |  |  |                                 |                     |                             |                        |
| SEE CHART   |                                      | MATERIAL NO.   |                                       | DOCUMENT NO.                                  |      | SHEET NO. |       |        |          |       |        |          |       |        |         |       |        |                |  |  |                                 |                     |                             |                        |