



LBS32201 SAW Filter Technical Specification

S P
LBS32201

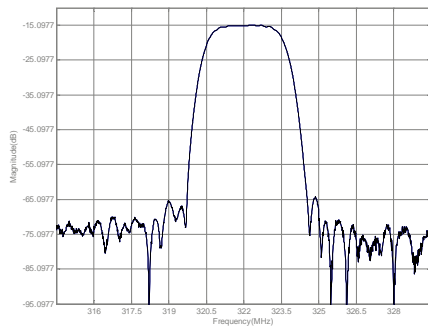
Absolute Maximum Ratings

Rating	Value	Units
Maximum Incident Power in Passband	+10	dBm
Max. DC voltage between any 2 terminals	30	VDC
Operating Temperature Range	-30 to +85	°C

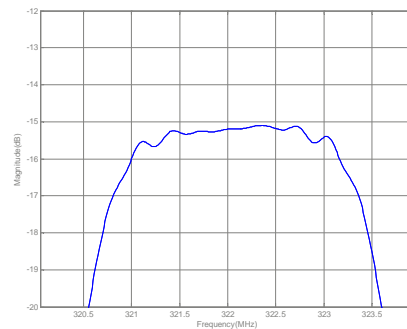
Electrical Characteristics

Characteristic	Sym	Min	Typ	Max	Units	
Nominal Center Frequency	f _C	321.85	322	322.15	MHz	
Passband	Insertion Loss at f _c	-	15	16	dB	
	3 dB Bandwidth	BW3	2.6	2.77	-	MHz
	20 dB Bandwidth	BW20	-	4.00	4.1	MHz
	45 dB Bandwidth	BW45	-	4.71	6.0	MHz
	Ripple	rp	-	0.5	0.7	dB
	Group Delay Variation over f _c ±1.1 MHz	GDV	-	40	70	nSP-P
Rejection	f _c ±12 MHz	UR	50	55	-	dB
Substrate Material	Quartz					
Impedance Matching to 50 Ω unbalanced	External L-C					
Case Style	SMP-53	13.3 x 6.5 mm Nominal Footprint				

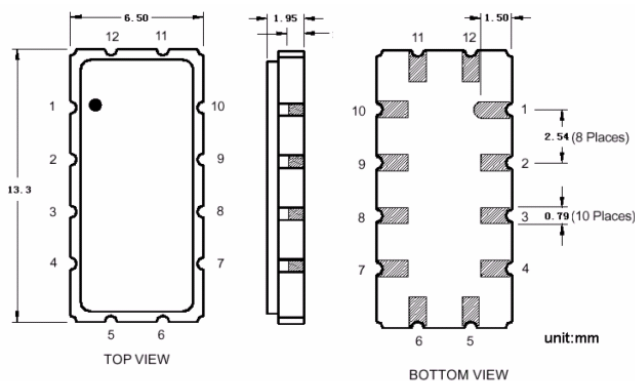
Frequency Response



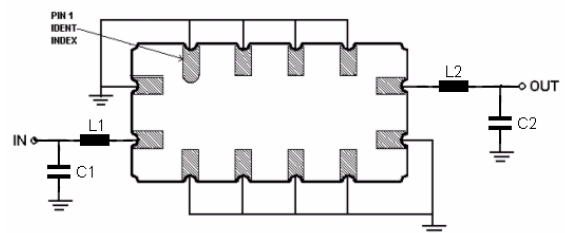
Passband Response



Package Outline



Matching Configuration



L1=18nH L2=12nH

C1=C2=22pF

Notes - Component values may change depending on board layout.