



TAI-SAW TECHNOLOGY CO., LTD.

No. 3, Industrial 2nd Rd., Ping-Chen Industrial District,
Tao-Yuan, 324, Taiwan, R.O.C.

TEL: 886-3-4690038 FAX: 886-3-4697532

E-mail: tstsales@mail.taisaw.com Web: www.taisaw.com

Approval Sheet for Product Specification

Issued Date:

Product Name: 480MHz IF SAW Filter (BW=36 MHz)

TST Parts No.: TB0590A

Customer Parts No.: _____

Company: _____
Division: _____
Approved by : _____
Date: _____

Checked by: _____ Andy Yu

Approval by: _____ Francis Chen

Date: _____ 11/19/2007



TAI-SAW TECHNOLOGY CO., LTD.

No.3, Industrial 2nd Rd., Ping-Chen Industrial District, Taoyuan, Taiwan, R.O.C.

TEL: 886-3-4690038 FAX: 886-3-4697532

E-mail: tstsales3@mail.taisaw.com Web: www.taisaw.com

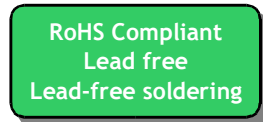
SAW Filter 480MHz (SMD 5.0×5.0 mm)

MODEL NO.: TB0590A

Rev. NO. 1.0

A. MAXIMUM RATING:

1. Operating Temperature: -30 °C ~ 70 °C
2. Storage Temperature: -40 °C ~ +85 °C

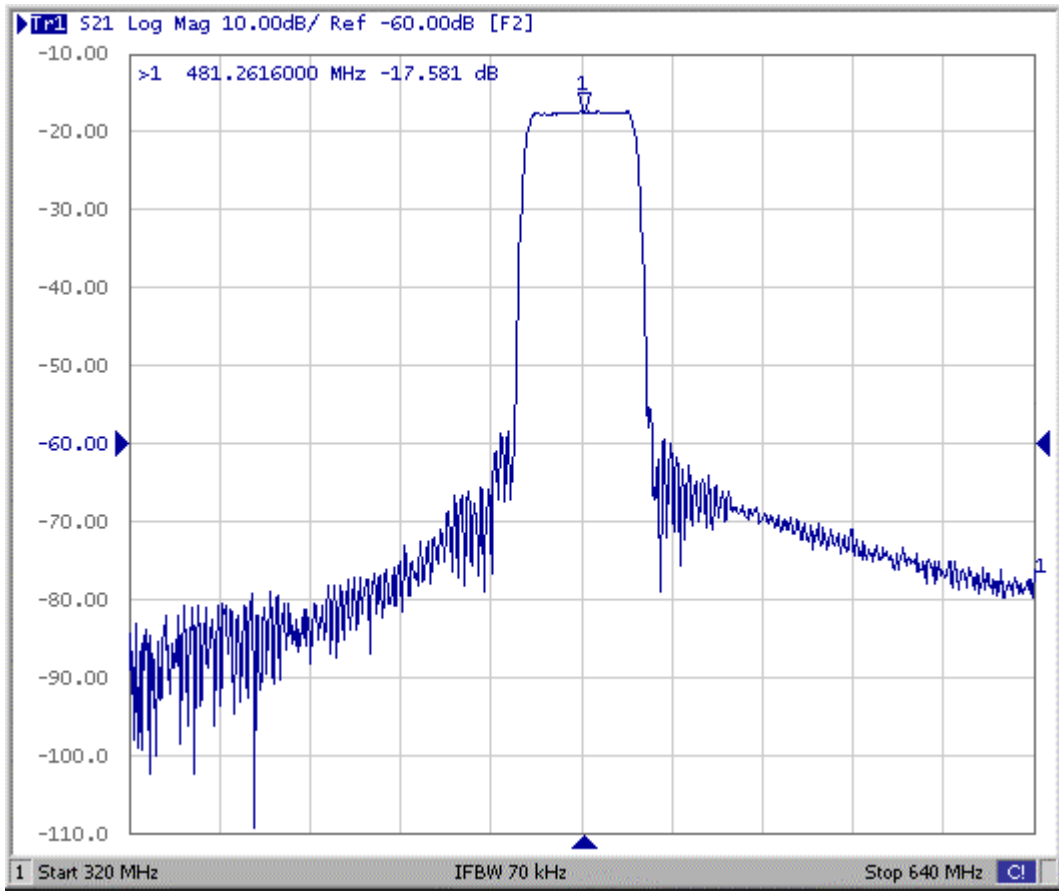


B. Characteristics :

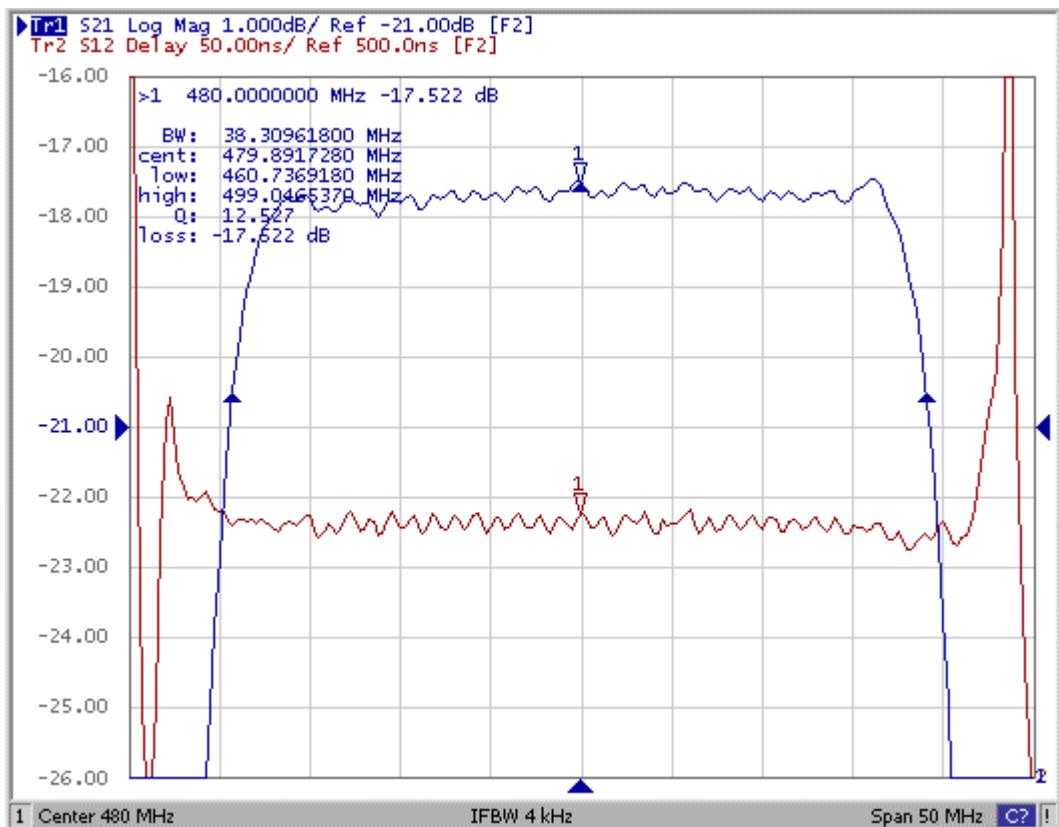
Item	Unit	Min.	Type.	Max.
Center frequency, Fc	MHz	479.5	480	480.5
Max Insertion Loss	dB	-	17.5	19.5
1 dB Bandwidth	MHz	-	35.7	-
3 dB Bandwidth	MHz	36	38.3	-
Pass band Ripple Fc±13.5MHz	dB	-	0.5	1.0
Group delay 462~498MHz	ns		27	50
Relative Attenuation: (Reference level from Max IL)				
320MHz to 454MHz	dB	35	52	-
506MHz to 640MHz	dB	35	48	-
Matching:				
1.The input of the filter will be matched to <u>50 ohm</u>				
2.The output of the filter will be matched to <u>50 ohm</u>				

C.FREQUENCY CHRACTERISTICS:

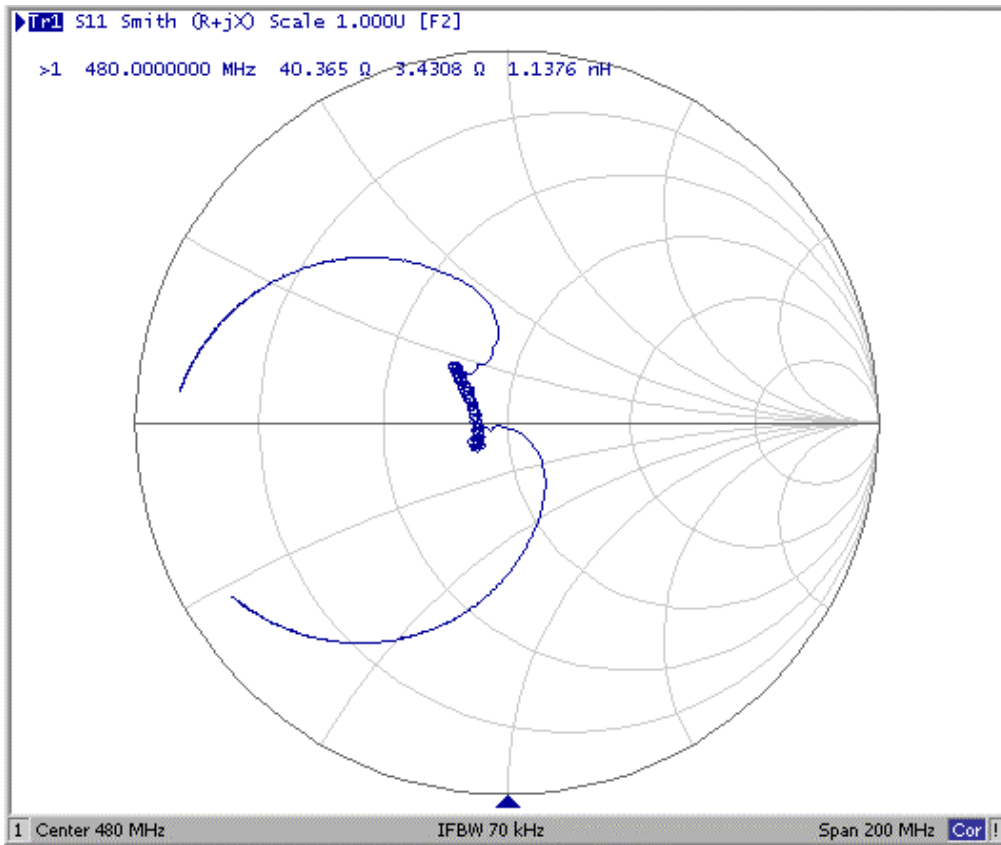
(1) S21 Response:(span 330MHz)



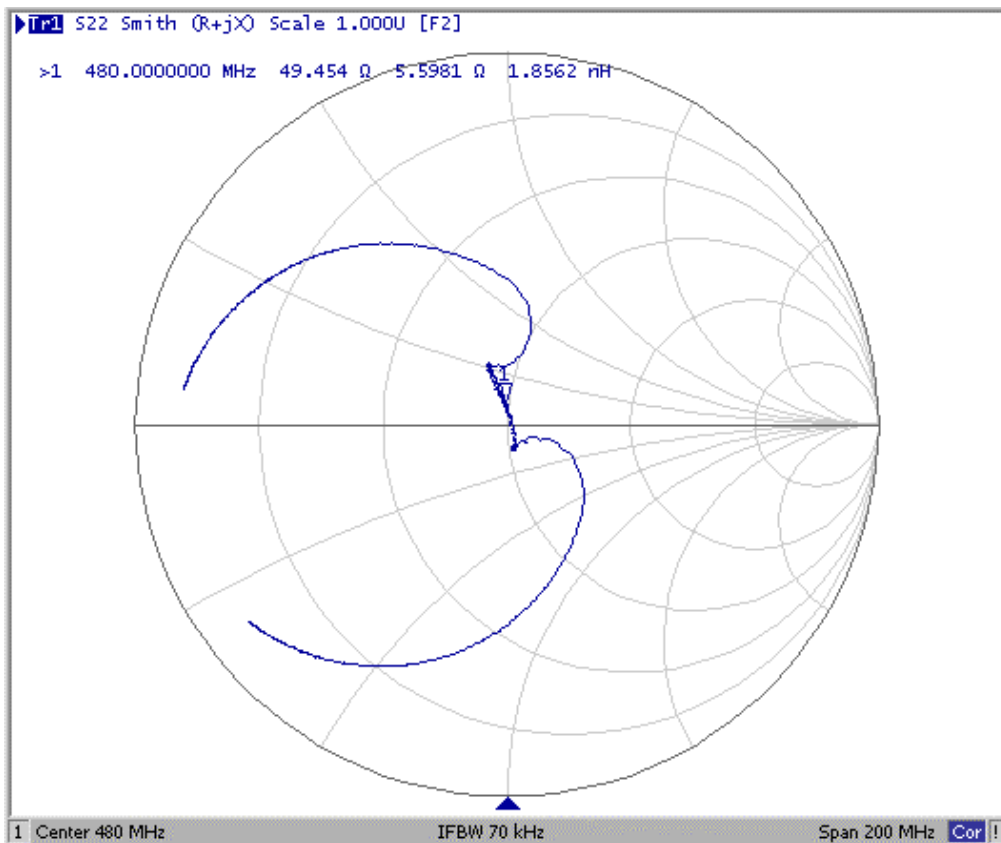
(2) Passband of Response: (span: 50MHz)



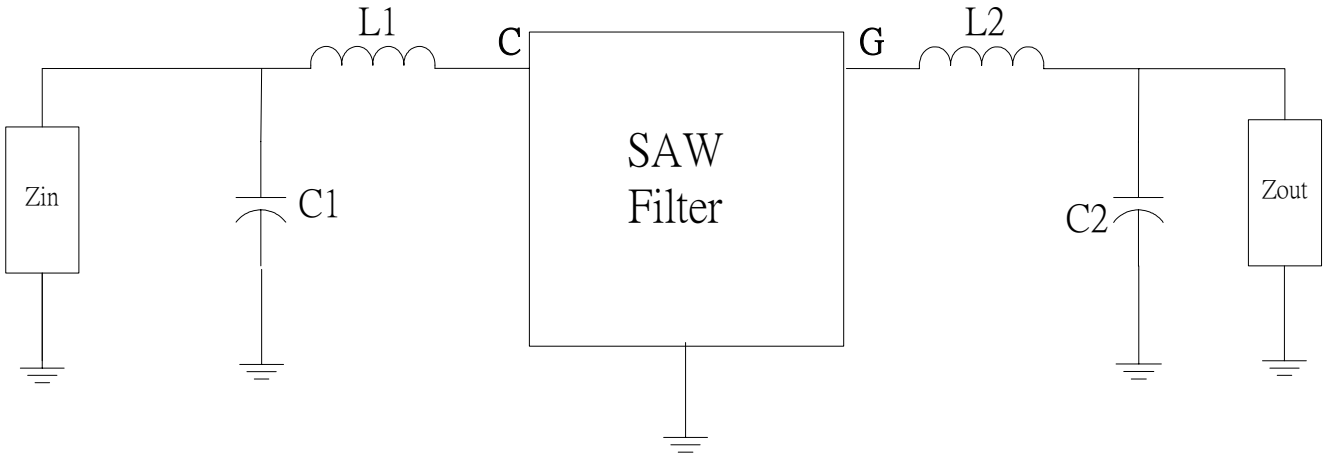
(3) S11 Smith Chart: (span 200MHz)



(4) S22 Smith Chart: (span 200MHz)



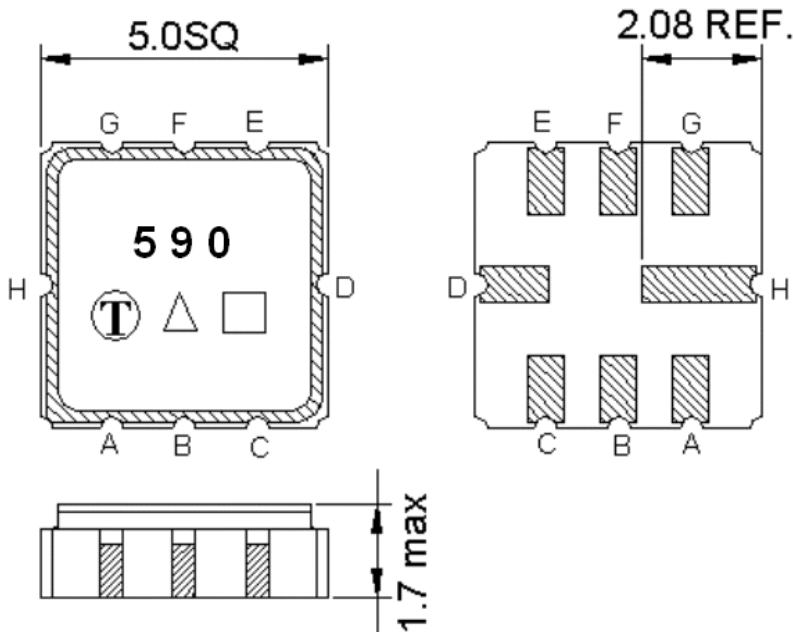
D. TEST CIRCUIT:



Zin and Zout are 50Ω

L1=12nH, C1=15pF, L2=15nH, C2=12pF

E. OUTLINE DRAWING:



Pin C: RF input

Pin G: RF output

Pin H,D: Case Ground

Pin A, B, E, F: Ground

□ : Week Code (Follow the table from planner each year)

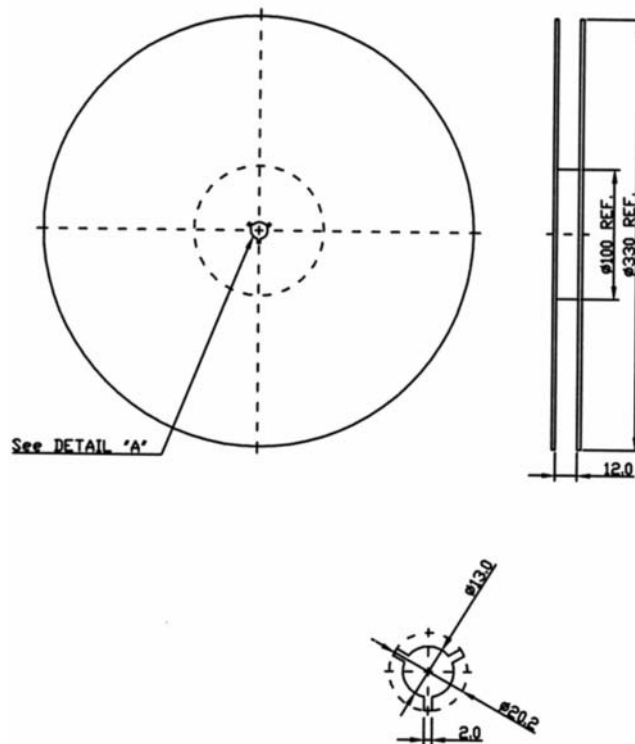
Unit : mm

△ : Product / Year Code

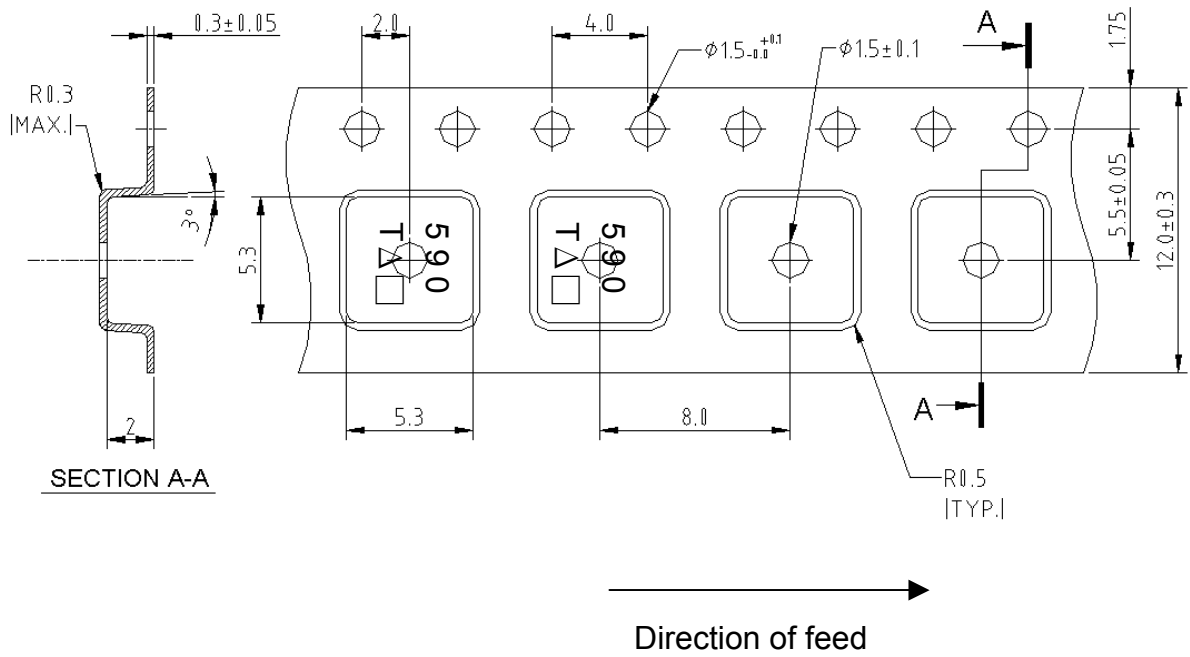
Year	2005 2009	2006 2010	2007 2011	2008 2012
Product Code	B	b	<u>B</u>	<u>b</u>

F.PACKING:

1.REEL DIMENSION



2.TAPE DIMENSION



G. Recommended Reflow Profile:

