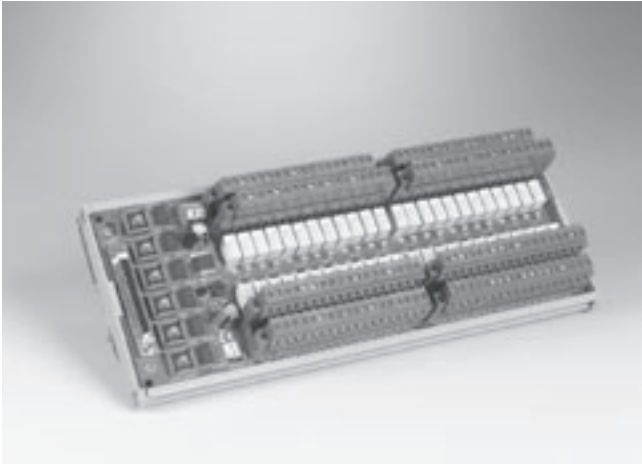


# PCLD-8762

## 48-ch Relay Output Board



### Features

- Built-in plug-in screw terminals for easier wiring
- LED status indicators for Relay output
- DIN-rail mounting
- Onboard relay driver circuits

### Specifications

#### Relay Output

- **Contact Rating** 30 V<sub>DC</sub> @ 1 A, 120 V<sub>AC</sub> @ 0.5 A
- **Contact Resistance** < 100 ohm
- **Electrical Endurance** 5\*10<sup>7</sup> times at 12 V/10 mA
- **Mechanical Endurance** 108 times
- **Operation Time** 5 ms Max
- **Release Time** 6 ms Max

#### General

- **Certifications** CE
- **Connectors**  
Controller: SCSI-68 (male)  
Digital Input: Plug-in screw terminals: (#14 ~ 24 AWG)
- **Dimensions** 285 x 117 mm
- **Mounting** DIN-rail
- **Power Input** Unregulated 7 ~ 30 V<sub>DC</sub>
- **Power Consumption** 7 V @ 1.8 A, 30 V @ 0.45 A  
(External power supply is required)

### Ordering Information

- **PCLD-8762** 48-ch Relay (SPDT) Output Board